

REV	1	LOCATIONS	Change PCB opening size	2020/01/16	ZOEY	CHERRY
APPD	REVERSER	DATE	DESCRIPTION			

Electrical
 Current Rating: 0.5A AC(rms)/DC
 Voltage Rating: 50V AC(rms)/DC
 Contact Resistance: 50 mΩ Max
 Insulation Resistance: 500 MΩ MIN
 Withstanding Voltage: 200V AC r.m.s
 Temperature Range-Operating: -35°C~+85°C
 Material and Plating
 Housing: LCP (UL94V-0)
 Contact Pin: Phosphor Bronze
 Plating: Selective gold in contact area,
 tin on tail

Circuits (n)	Part No.					Dimensions(in/mm)				
	A	B	C	D	E	A	B	C	D	E
21	FBB10003-M21S3XX3W5M	.563(14.30)	.354(9.00)	.394(10.00)	.634(16.10)	.516(13.10)				
31	FBB10003-M31S3XX3W5M	.760(19.30)	.551(14.00)	.591(15.00)	.831(21.10)	.713(18.10)				
41	FBB10003-M41S3XX3W5M	.957(24.30)	.748(19.00)	.787(20.00)	1.028(26.10)	.909(23.10)				
51	FBB10003-M51S3XX3W5M	1.154(29.30)	.945(24.00)	.984(25.00)	1.224(31.10)	1.106(28.10)				

Ordering Information

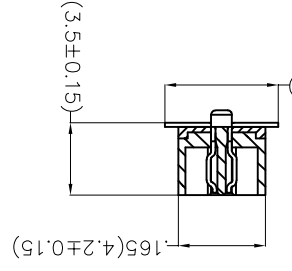
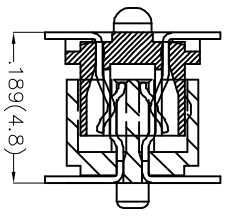
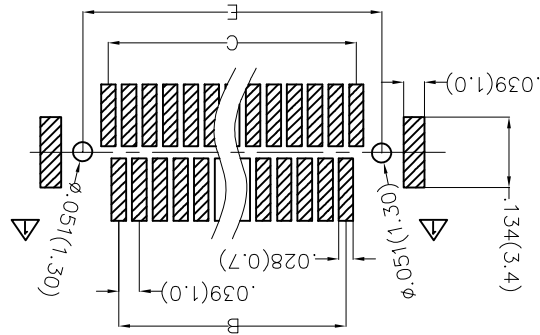
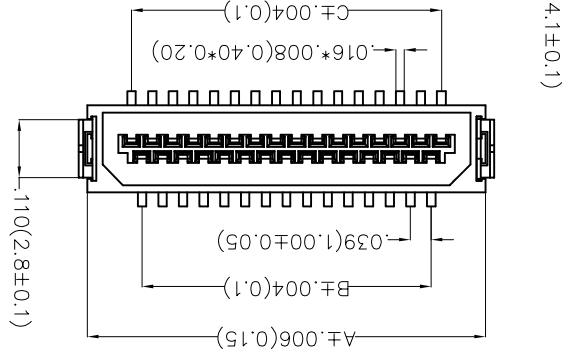
1	Category	FBB-Board To Board
2	Series Number	100-Pitch1.0mm
3	Distinction No.	03
4	Type	M-Male
5	Circuits	XX
6	Entry Angle	S-180° Vertical
7	Plating	3-Selective gold in contact area, tin on tail 01-1μ 05-5μ
8	Thickness of Plating	Material-Resin 3-LCP 01-1μ 05-5μ Custom plate available
9	Material-Resin	Color-Resin W5-Natural
10	Color-Resin	M-Reel Packaging
11	Packaging	

THIRD ANGLE PROJECTION	GENERAL TOLERANCES (UNLESS SPECIFIED)	APPROVE BY	DATE	PART NO.	ITEM NO.
		FRANK	14/AUG/19	FBB10003-MXXS3XX3W5M	FBB10003
		CHECKED BY	DATE	DATE	DATE
		CHERRY	14/AUG/19	14/AUG/19	14/AUG/19
DESIGN UNITS Inch (metric)	X.XX±.006(0.20)	DRAWN BY	ZOEY		
SCALE	A4				
	5:1				

THIS DRAWING CONTAINS INFORMATION THAT IS PROPRIETARY TO TXGA INDUSTRIAL ELECTRONICS(Z)CO.,LTD AND SHOULD NOT BE USED WITHOUT WRITTEN PERMISSION

TXGA
 Leader Of Industry

Board to Board Pitch 1.0mm 180° Vertical (SMT)
 REV 1
 SHEET NO. 1/1



X-ON Electronics

Largest Supplier of Electrical and Electronic Components

Click to view similar products for [Board to Board & Mezzanine Connectors](#) category:

Click to view products by [TXGA](#) manufacturer:

Other Similar products are found below :

[10135583-642402LF](#) [89885-310LF](#) [589158040000018](#) [6-1393048-0](#) [68683-613](#) [MDF7-12DP-2.54DSA](#) [MDF7-18P-2.54DSA\(01\)](#) [MDF7-20DP-2.54DSA](#) [MDF7-26D-2.54DSA\(55\)](#) [MDF7-3P-2.54DSA\(01\)](#) [MDF7B-20P-2.54DSA\(01\)](#) [MDF7B-3P-2.54DSA\(55\)](#) [MDF7C-11P-2.54DSA\(55\)](#) [MDF7C-18P-2.54DSA\(55\)](#) [MDF7C-5P-2.54DSA\(01\)](#) [MDF7P-5P-2.54DSA\(55\)](#) [75234-0516](#) [FCN-230C068-11](#) [FCN-268F012-G/BD](#) [FCN-268F036-G/BD](#) [FCN-268M012-G/0D](#) [FCN-268M024-G/1D](#) [FCN-360C008-C](#) [FCN-360C040-C](#) [FCN-723J004/1](#) [MIS-048-01-F-D-DP-K](#) [832-10-034-10-001000](#) [93696-325LF](#) [11828-1FA](#) [AXK630345P](#) [18097-0013](#) [ICA-328STT](#) [2007042-2](#) [304400-2](#) [FCN-214Q030-G/0](#) [FCN-215Q040-G/0](#) [FCN-230C068-ESA](#) [FCN-234P048-G/0](#) [FCN-235D050-G/C](#) [FCN-360A3](#) [FCN-360C040-B](#) [210-93-314-41-105000](#) [2-22603-0](#) [379-064-521-202](#) [MDF7-12P-2.54DSA\(01\)](#) [MDF7-16P-2.54DS\(56\)](#) [MDF7-40DP-2.54DSA\(55\)](#) [MDF7-8P-2.54DSA\(55\)](#) [MDF7B-16P-2.54DSA\(55\)](#) [AXG720047](#)