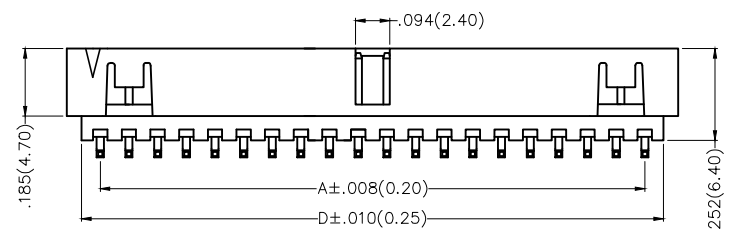
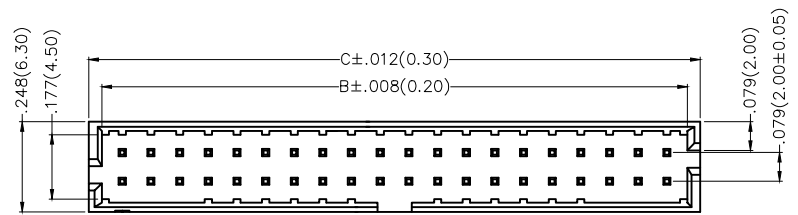


REV	LOCATIONS	DESCRIPTION	DATE	REVISER	APPD
1		Update version	13/DEC/18	KATE	ANDY

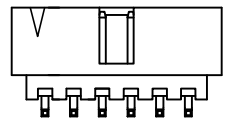
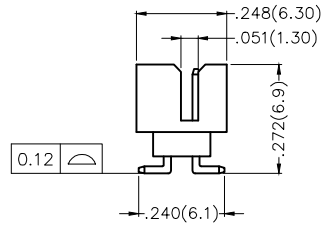
**SPECIFICATIONS**

**Electrical**  
 Current Rating: 2.0A AC(rms)/DC  
 Voltage Rating: 250V AC(rms)/DC  
 Contact Resistance: 20 mΩ Max  
 Insulation Resistance: 1000 MΩ Min  
 Withstanding Voltage: 500V AC r.m.s  
 Temperature Range-Operating: -40°C~+105°C

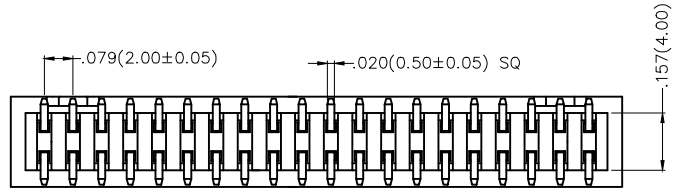
**Material and Plating**  
 Housing: Glass Filled Polyester (UL94V-0)  
 Contact Pin: Brass  
 Plating: Gold Plated



No.16~50 Circuits



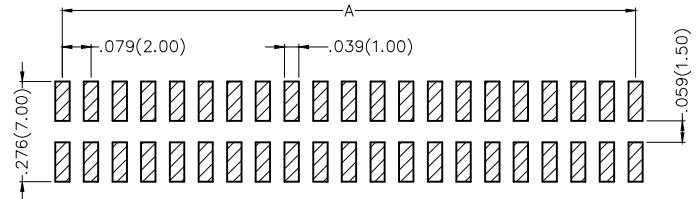
No.6~14 Circuits



**Ordering Information**

FBH 200 15 - D XX S 1 XX 4 K6 K  
 1 2 3 4 5 6 7 8 9 10 11

1	Category FBH-Box Header	2	Series Number 200-Pitch2.00mm	3	Distinction No. 15	4	Row Option D-Double Row	5	Circuits XX	6	Entry Angle S-Vertical
7	Plating 1-Gold Plated	8	Thickness of Plating 00-Gold Flash 03-3μ" Custom plate available	9	Material-Resin 4-PA9T	10	Color-Resin K6-Black	11	Packaging K-Tray		



Recommended P.C.Board Layout

	GENERAL TOLERANCES (UNLESS SPECIFIED)		APPROVE BY FRANK	DATE 19/JUL/13	PART NO. FBH20015-DXXS1XX4K6K	ITEM NO. FBH20015		
	X.±.012(0.30)	X'.±5'	CHECKED BY CHERRY	DATE 19/JUL/13	TITLE Wire to Board(Box Header) Pitch 2.00mm Vertical 180°(SMT)			
DESIGN UNITS Inch (metric)	X.X±.008(0.20)	.X'±2'	DRAWN BY KATE	DATE 19/JUL/13	THIS DRAWING CONTAINS INFORMATION THAT IS PROPRIETARY TO TXGA INDUSTRIAL ELECTRONICS(S.Z)CO.,LTD AND SHOULD NOT BE USED WITHOUT WRITTEN PERMISSION		REV 1	SHEET NO. 1/2
SCALE 5:1	SIZE A4	X.XX±.006(0.15)						



1 2 3 4 5 6 7 8

REV	LOCATIONS	DESCRIPTION	DATE	REVISER	APPD

A  
B  
C  
D  
E  
F

A  
B  
C  
D  
E  
F

Circuits (n)	Part No.	Dimensions(in/mm)			
		A	B	C	D
6	FBH20015-D06S1XX4K6K	.157(4.00)	.266(6.75)	.341(8.65)	.274(6.95)
8	FBH20015-D08S1XX4K6K	.236(6.00)	.344(8.75)	.419(10.65)	.352(8.95)
10	FBH20015-D10S1XX4K6K	.315(8.00)	.423(10.75)	.498(12.65)	.431(10.95)
12	FBH20015-D12S1XX4K6K	.394(10.00)	.502(12.75)	.577(14.65)	.510(12.95)
14	FBH20015-D14S1XX4K6K	.472(12.00)	.581(14.75)	.656(16.65)	.589(14.95)
16	FBH20015-D16S1XX4K6K	.551(14.00)	.659(16.75)	.734(18.65)	.667(16.95)
18	FBH20015-D18S1XX4K6K	.630(16.00)	.738(18.75)	.813(20.65)	.746(18.95)
20	FBH20015-D20S1XX4K6K	.709(18.00)	.817(20.75)	.892(22.65)	.825(20.95)
22	FBH20015-D22S1XX4K6K	.787(20.00)	.896(22.75)	.970(24.65)	.904(22.95)
24	FBH20015-D24S1XX4K6K	.866(22.00)	.974(24.75)	1.049(26.65)	.982(24.95)
26	FBH20015-D26S1XX4K6K	.945(24.00)	1.053(26.75)	1.128(28.65)	1.061(26.95)
28	FBH20015-D28S1XX4K6K	1.024(26.00)	1.132(28.75)	1.207(30.65)	1.140(28.95)
30	FBH20015-D30S1XX4K6K	1.102(28.00)	1.211(30.75)	1.285(32.65)	1.219(30.95)
32	FBH20015-D32S1XX4K6K	1.181(30.00)	1.289(32.75)	1.364(34.65)	1.297(32.95)
34	FBH20015-D34S1XX4K6K	1.260(32.00)	1.368(34.75)	1.443(36.65)	1.376(34.95)
36	FBH20015-D36S1XX4K6K	1.339(34.00)	1.447(36.75)	1.522(38.65)	1.455(36.95)
38	FBH20015-D38S1XX4K6K	1.417(36.00)	1.526(38.75)	1.600(40.65)	1.533(38.95)
40	FBH20015-D40S1XX4K6K	1.496(38.00)	1.604(40.75)	1.679(42.65)	1.612(40.95)
42	FBH20015-D42S1XX4K6K	1.575(40.00)	1.683(42.75)	1.758(44.65)	1.691(42.95)
44	FBH20015-D44S1XX4K6K	1.654(42.00)	1.762(44.75)	1.837(46.65)	1.770(44.95)
46	FBH20015-D46S1XX4K6K	1.732(44.00)	1.841(46.75)	1.915(48.65)	1.848(46.95)
48	FBH20015-D48S1XX4K6K	1.811(46.00)	1.919(48.75)	1.994(50.65)	1.927(48.95)
50	FBH20015-D50S1XX4K6K	1.890(48.00)	1.998(50.75)	2.073(52.65)	2.006(50.95)

 THIRD ANGLE PROJECTION	GENERAL TOLERANCES (UNLESS SPECIFIED)		APPROVE BY FRANK	DATE 19/JUL/13	PART NO. FBH20015-DXXS1XX4K6K	ITEM NO. FBH20015	 Leader Of Industry		
	X.±.012(0.30)	X'.±5'	CHECKED BY CHERRY	DATE 19/JUL/13	TITLE Wire to Board(Box Header) Pitch 2.00mm Vertical 180°(SMT)			REV 1	SHEET NO. 2/2
	X.X±.008(0.20)	.X'±2'	DRAWN BY KATE	DATE 19/JUL/13	THIS DRAWING CONTAINS INFORMATION THAT IS PROPRIETARY TO TXGA INDUSTRIAL ELECTRONICS(S.Z)CO.,LTD AND SHOULD NOT BE USED WITHOUT WRITTEN PERMISSION				
	X.XX±.006(0.15)	.XX'±1'							
SCALE 5:1	SIZE A4	X.XXX±.004(0.10)	.XXX'±0.5'						

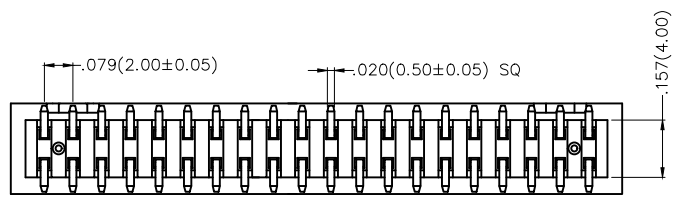
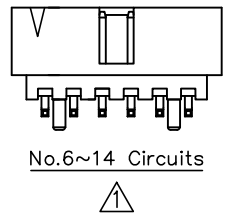
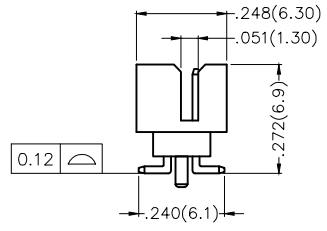
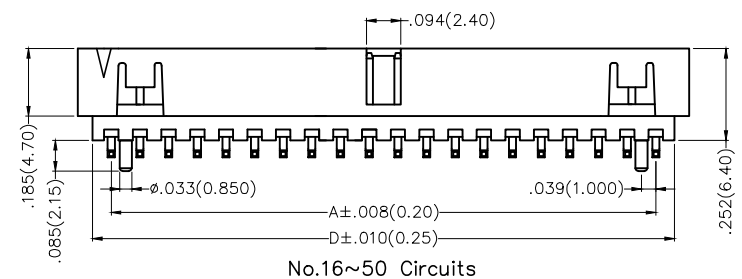
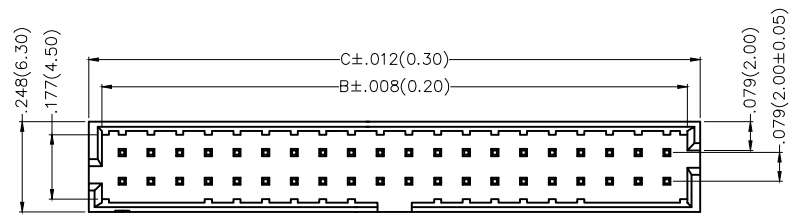
1 2 3 4 5 6 7 8

REV	LOCATIONS	DESCRIPTION	DATE	REVISER	APPD
1		Update version	13/DEC/18	KATE	ANDY

SPECIFICATIONS

Electrical  
 Current Rating: 2.0A AC(rms)/DC  
 Voltage Rating: 250V AC(rms)/DC  
 Contact Resistance: 20 mΩ Max  
 Insulation Resistance: 1000 MΩ Min  
 Withstanding Voltage: 500V AC r.m.s  
 Temperature Range-Operating: -40°C~+105°C

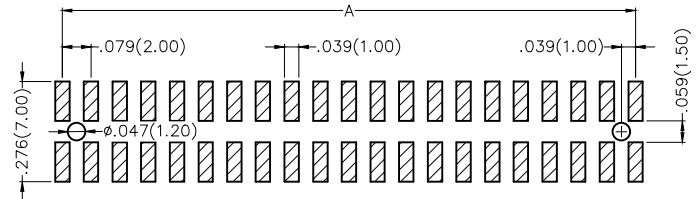
Material and Plating  
 Housing: Glass Filled Polyester (UL94V-0)  
 Contact Pin: Brass  
 Plating: Gold Plated



Ordering Information

FBH 200 15 - D XX S 1 XX 4 K6 K A  
 1 2 3 4 5 6 7 8 9 10 11 12

1	Category FBH-Box Header	2	Series Number 200-Pitch2.00mm	3	Distinction No. 15	4	Row Option D-Double Row	5	Circuits XX	6	Entry Angle S-Vertical
7	Plating 1-Gold Plated	8	Thickness of Plating 00-Gold Flash 03-3μ" Custom plate available	9	Material-Resin 4-PA9T	10	Color-Resin K6-Black	11	Packaging K-Tray	12	Type A-With position



Recommended P.C.Board Layout

	GENERAL TOLERANCES (UNLESS SPECIFIED)		APPROVE BY FRANK	DATE 19/JUL/13	PART NO. FBH20015-DXXS1XX4K6KA	ITEM NO. FBH20015		
	X.±.012(0.30)	X'.±5'	CHECKED BY CHERRY	DATE 19/JUL/13	TITLE Wire to Board(Box Header) Pitch 2.00mm Vertical 180°(SMT)			
DESIGN UNITS Inch (metric)	X.X±.008(0.20)	X'.±2'	DRAWN BY KATE	DATE 19/JUL/13	THIS DRAWING CONTAINS INFORMATION THAT IS PROPRIETARY TO TXGA INDUSTRIAL ELECTRONICS(S.Z)CO.,LTD AND SHOULD NOT BE USED WITHOUT WRITTEN PERMISSION		REV 1	SHEET NO. 1/2
SCALE 5:1	SIZE A4	X.XX±.006(0.15)						
		X.XXX±.004(0.10)						

1 2 3 4 5 6 7 8

REV	LOCATIONS	DESCRIPTION	DATE	REVISER	APPD

A

A

B

B

C

C

D

D



E

E

F

F

Circuits (n)	Part No.	Dimensions(in/mm)			
		A	B	C	D
6	FBH20015-D06S1XX4K6KA	.157(4.00)	.266(6.75)	.341(8.65)	.274(6.95)
8	FBH20015-D08S1XX4K6KA	.236(6.00)	.344(8.75)	.419(10.65)	.352(8.95)
10	FBH20015-D10S1XX4K6KA	.315(8.00)	.423(10.75)	.498(12.65)	.431(10.95)
12	FBH20015-D12S1XX4K6KA	.394(10.00)	.502(12.75)	.577(14.65)	.510(12.95)
14	FBH20015-D14S1XX4K6KA	.472(12.00)	.581(14.75)	.656(16.65)	.589(14.95)
16	FBH20015-D16S1XX4K6KA	.551(14.00)	.659(16.75)	.734(18.65)	.667(16.95)
18	FBH20015-D18S1XX4K6KA	.630(16.00)	.738(18.75)	.813(20.65)	.746(18.95)
20	FBH20015-D20S1XX4K6KA	.709(18.00)	.817(20.75)	.892(22.65)	.825(20.95)
22	FBH20015-D22S1XX4K6KA	.787(20.00)	.896(22.75)	.970(24.65)	.904(22.95)
24	FBH20015-D24S1XX4K6KA	.866(22.00)	.974(24.75)	1.049(26.65)	.982(24.95)
26	FBH20015-D26S1XX4K6KA	.945(24.00)	1.053(26.75)	1.128(28.65)	1.061(26.95)
28	FBH20015-D28S1XX4K6KA	1.024(26.00)	1.132(28.75)	1.207(30.65)	1.140(28.95)
30	FBH20015-D30S1XX4K6KA	1.102(28.00)	1.211(30.75)	1.285(32.65)	1.219(30.95)
32	FBH20015-D32S1XX4K6KA	1.181(30.00)	1.289(32.75)	1.364(34.65)	1.297(32.95)
34	FBH20015-D34S1XX4K6KA	1.260(32.00)	1.368(34.75)	1.443(36.65)	1.376(34.95)
36	FBH20015-D36S1XX4K6KA	1.339(34.00)	1.447(36.75)	1.522(38.65)	1.455(36.95)
38	FBH20015-D38S1XX4K6KA	1.417(36.00)	1.526(38.75)	1.600(40.65)	1.533(38.95)
40	FBH20015-D40S1XX4K6KA	1.496(38.00)	1.604(40.75)	1.679(42.65)	1.612(40.95)
42	FBH20015-D42S1XX4K6KA	1.575(40.00)	1.683(42.75)	1.758(44.65)	1.691(42.95)
44	FBH20015-D44S1XX4K6KA	1.654(42.00)	1.762(44.75)	1.837(46.65)	1.770(44.95)
46	FBH20015-D46S1XX4K6KA	1.732(44.00)	1.841(46.75)	1.915(48.65)	1.848(46.95)
48	FBH20015-D48S1XX4K6KA	1.811(46.00)	1.919(48.75)	1.994(50.65)	1.927(48.95)
50	FBH20015-D50S1XX4K6KA	1.890(48.00)	1.998(50.75)	2.073(52.65)	2.006(50.95)

 THIRD ANGLE PROJECTION	GENERAL TOLERANCES (UNLESS SPECIFIED)		APPROVE BY FRANK	DATE 19/JUL/13	PART NO. FBH20015-DXXS1XX4K6KA	ITEM NO. FBH20015	 Leader Of Industry
	X.±.012(0.30)	X.±5'	CHECKED BY CHERRY	DATE 19/JUL/13	TITLE Wire to Board(Box Header) Pitch 2.00mm Vertical 180°(SMT)		
	X.X±.008(0.20)	.X'±2"	DRAWN BY KATE	DATE 19/JUL/13	THIS DRAWING CONTAINS INFORMATION THAT IS PROPRIETARY TO TXGA INDUSTRIAL ELECTRONICS(S.Z)CO.,LTD AND SHOULD NOT BE USED WITHOUT WRITTEN PERMISSION		
	X.XX±.006(0.15)	.XX'±1"			REV 1	SHEET NO. 2/2	
SCALE 5:1	SIZE A4	X.XXX±.004(0.10)	.XXX'±0.5'				

1 2 3 4 5 6 7 8

## X-ON Electronics

Largest Supplier of Electrical and Electronic Components

*Click to view similar products for [I/O Connectors](#) category:*

*Click to view products by [TXGA](#) manufacturer:*

Other Similar products are found below :

[571763P](#) [59811-0000](#) [61-168618-12P](#) [D20419-211](#) [D38999/20FJ24PA L/C](#) [76871-1403](#) [PCR-E36PM](#) [PCS-XE26LKA](#) [PCS-XES68MS+](#)  
[G38A71314B](#) [DX40-50P\(55\)](#) [1571250010](#) [157-22500-3](#) [MS3471L14-19P L/C](#) [192991-0703](#) [FCN-260C008-A/L0](#) [FCN-260C024-AL0](#) [FCN-](#)  
[261Z008](#) [2000314-1](#) [200331-1](#) [PCS-E28FS+](#) [PCS-XE26SLFD+](#) [PCS-XE26SLFDT+](#) [G730VID08BDC24](#) [HDR-E14MSG1+](#) [54182-0605](#)  
[UE86K842720321](#) [38113800006](#) [DP3AR020WQ1R200](#) [DRA-26PC-F0R](#) [Z4.102.0680.0](#) [500-1040](#) [500-1052](#) [DX40-20P\(55\)](#) [5554841-1](#)  
[SM3100F14S-12P](#) [U90B3054061110](#) [U65-E04-4020](#) [557-262M2-06C](#) [60-042222-02S](#) [10099439-003C-TRLF](#) [226-0348-000](#) [10137239-](#)  
[0011LF](#) [70.060.1028.0](#) [109029-ZZ](#) [HDR-E26MG1+](#) [SO-0715-02-01-02](#) [GT1-DA04CST](#) [231-303](#) [MS3112E16-8SX](#)