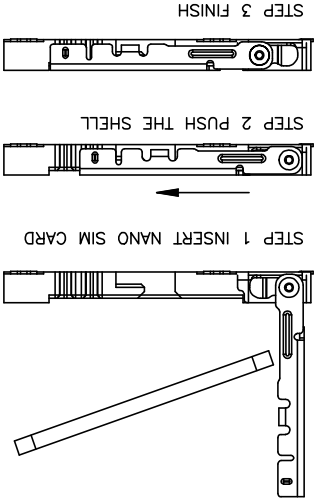
 THIRD ANGLE PROJECTION	X ±.014(0.35)	X ±.5	CHECKED BY KATE	DATE 14/AUG/17	PART NO. FCD902-7M ITEM NO. FCD902	TITLE Nano SIM card connector(H:1.4mm)	REV 1 SHEET NO. 2/2	Leader Of Industry TXGA	
	X.XX±.008(0.20)	X ±.1	DRAWN BY LXF	DATE 14/AUG/17					
X.XX±.004(0.10)	X.XX±0.5	APPROVE BY VERNON	DATE 14/AUG/17	GENERAL TOLERANCES (UNLESS SPECIFIED)	APPROVE BY VERNON	DATE 14/AUG/17	THIS DRAWING CONTAINS INFORMATION THAT IS PROPRIETARY TO TXGA INDUSTRIAL ELECTRONICS(S)Z)CO.,LTD AND SHOULD NOT BE USED WITHOUT WRITTEN PERMISSION	SCALE 5:1 SIZE A4	DESIGN UNITS Inch (metric)

Part No.	Pin Name
C1	VCC
C2	RST
C3	CLK
C5	GND
C6	VPP
C7	I/O
S/W	Switch Pin



REV	LOCATIONS	DESCRIPTION	DATE	REVERSER	APPD
-----	-----------	-------------	------	----------	------

X-ON Electronics

Largest Supplier of Electrical and Electronic Components

Click to view similar products for [Standard Card Edge Connectors](#) category:

Click to view products by [TXGA](#) manufacturer:

Other Similar products are found below :

[6565204-6](#) [PKC-156](#) [1437274-4](#) [147889-1](#) [1489165-4](#) [EBT156-12B1X](#) [EBT15622B2X](#) [EBT156-22R2W](#) [1-582587-1](#) [1-582589-1](#) [2-6437275-9](#) [284-0102-12100](#) [306022901000000](#) [307-012-502-202](#) [307-024-526-201](#) [307-056-520-300](#) [307-080-526-208](#) [1926088-2](#) [245-062-520-350](#) [287-0032-12101](#) [306-010-500-112](#) [306-028-525-102](#) [306-240-318](#) [307-036-502-202](#) [307-036-521-301](#) [307-072-526-202](#) [345-060-559-303](#) [368-004-520-201](#) [392-008-559-201](#) [534671-1](#) [5-530501-5](#) [341-240-317](#) [345-029-520-300](#) [345-030-500-301](#) [345-044-500-300](#) [345-220-058](#) [346-240-318](#) [387-012-523-300](#) [395-044-520-300](#) [395-100-524-300](#) [50-12B-10](#) [50-6SN-5](#) [09-07-2032](#) [10035388-106LF](#) [10035388-802LF](#) [10115859-011LF](#) [10122859-009LF](#) [101269333204245CLF](#) [10127905-B04B24BLF](#) [530555-1](#)