

REV	LOCATIONS	DESCRIPTION	DATE	REVISER	APPD

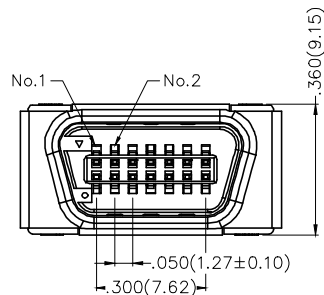
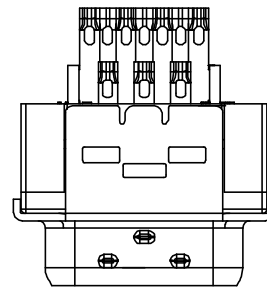
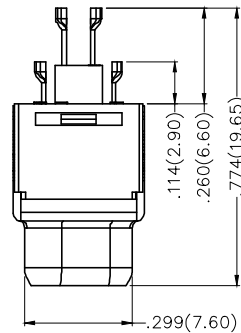
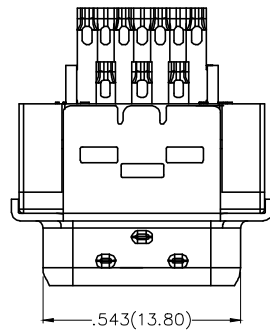
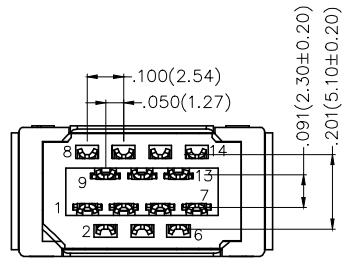
SPECIFICATIONS

Electrical

Current Rating: 1A AC(rms)/DC
Voltage Rating: 40V AC(rms) 500V DC
Contact Resistance: 35 mΩ Max
Insulation Resistance: 200 MΩ Min
Withstanding Voltage: 500V AC r.m.s
Temperature Range-Operating: -25°C~+85°C

Material and Plating

Housing: PBT (UL 94V-0), Black
Contact: Phosphor Bronze/ Selective gold in contact area, tin on tail
Cover: Copper Alloy/ Nickel plated
Shell: SPCC/ Nickel plated



Ordering Information

FCS 14 04 — M0 W S 3 XX K6 K
1 2 3 4 5 6 7 8 9 10

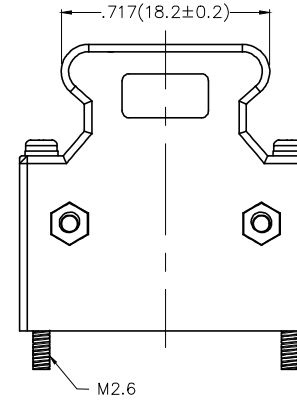
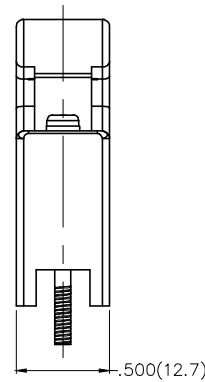
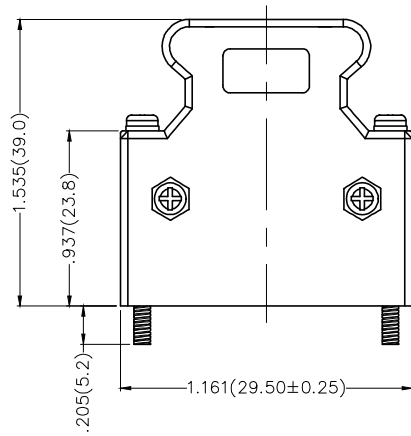
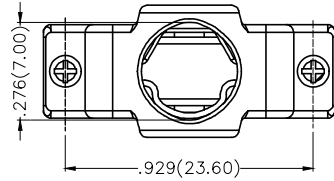
1	Category	2	Circuits	3	Distinction No.	4	Type	5	Assembly Layout	6	Entry Angle
	FCS-SCSI		14		04		M0-Male		W-Welding Type		S-180° Vertical
7	Plating	8	Thickness of Plating	9	Color-Resin	10	Packaging				
	3-Selective gold in contact area, tin on tail		00-Gold flash 03-3μ" Custom plate available		K6-Black		K-Tray				

<p>THIRD ANGLE PROJECTION</p>	GENERAL TOLERANCES (UNLESS SPECIFIED)		APPROVE BY	DATE	PART NO.	ITEM NO.	<p>Leader Of Industry</p>	
	X.±.012(0.30)	X'.±5'	FRANK	19/JUL/13	FCS1404-MOWS3XXK6K	FCS1404		
	X.X±.008(0.20)	.X'±2'	CHECKED BY	DATE	TITLE		REV 0	SHEET NO. 1/2
	X.XX±.006(0.15)	.XX'±1'	CHERRY	19/JUL/13	SCSI Connector Pitch 1.27mm 180° Vertical Male		THIS DRAWING CONTAINS INFORMATION THAT IS PROPRIETARY TO TXGA INDUSTRIAL ELECTRONICS(S.Z)CO.,LTD AND SHOULD NOT BE USED WITHOUT WRITTEN PERMISSION	
SCALE	SIZE	X.XXX±.004(0.10)	.XXX'±0.5'	DRAWN BY	DATE			
5:1	A4			KEVIN	19/JUL/13			

REV	LOCATIONS	DESCRIPTION	DATE	REVISER	APPD

Material—Cover

Plastic cover: PBT (UL 94V-0), Black
 Clamp: SPCC



 THIRD ANGLE PROJECTION	GENERAL TOLERANCES (UNLESS SPECIFIED)		APPROVE BY FRANK	DATE 19/JUL/13	PART NO. FCS1404-MOWS3XXK6K	ITEM NO. FCS1404	 Leader Of Industry
	DESIGN UNITS Inch (metric)	X.±.012(0.30) X.X±.008(0.20)	X.'±5' .X'±2'	CHECKED BY CHERRY	DATE 19/JUL/13	TITLE SCSI Connector Pitch 1.27mm 180° Vertical Male	
SCALE 5:1	SIZE A4	X.XX±.006(0.15) X.XXX±.004(0.10)	.XX'±1' .XXX'±0.5'	DRAWN BY KEVIN	DATE 19/JUL/13	THIS DRAWING CONTAINS INFORMATION THAT IS PROPRIETARY TO TXGA INDUSTRIAL ELECTRONICS(S.Z)CO.,LTD AND SHOULD NOT BE USED WITHOUT WRITTEN PERMISSION	REV 0 SHEET NO. 2/2

X-ON Electronics

Largest Supplier of Electrical and Electronic Components

Click to view similar products for [D-Sub Standard Connectors](#) category:

Click to view products by [TXGA](#) manufacturer:

Other Similar products are found below :

[015-0339-000](#) [015-0341-000](#) [015-0349-000](#) [015-0350-000](#) [015-8544-011](#) [015-8755-001](#) [017041-0005](#) [020419-0104](#) [609-25P](#) [609-9P](#) [CT0-24-10SC](#) [CT0-36-3PC](#) [CT0E20-8PS](#) [CT0F16S-1PS](#) [CT0TA16-11SXCA232](#) [CT1E20-19SS](#) [CT2-10SL-3SC](#) [CT2-14S-2PCA34](#) [CT2-18-11PCAU](#) [CT2-22-19SC](#) [CT2-36-5PC](#) [CT6-10SL-3SC](#) [CT6-10SL-4SC](#) [CT6-14S-2SC](#) [CT6-16-12SC](#) [CT6-18-10PSA206](#) [CT6-18-10PSA232](#) [CT6-18-11PXSA206](#) [CT6-18-11PXSA232](#) [CT6-22-10PS](#) [CT6-24-5PC](#) [CT6-9767-18-8-18-4SS](#) [CT6E14S-5SC](#) [CT6E14SA7SC](#) [CT6E20-14SS](#) [CT6E22-14PC](#) [CT6E22-14PS](#) [CT6E22-19PS](#) [CT6E22-22PS](#) [CT6E24-10SC](#) [CT6F16S-1SC](#) [CT6FA10SL-4PS](#) [CT6LA20-19PC](#) [CT6M20-19SS](#) [CT6NSB4-20-8SS](#) [CT6TC14S-6SCAU](#) [CT6TC14S-7PS](#) [6STD15SCT99S40X](#) [6STF09PCM05B70X](#) [D20420-80](#)