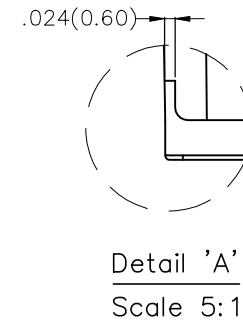
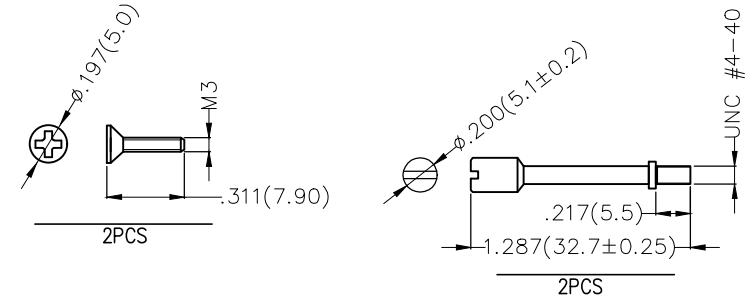
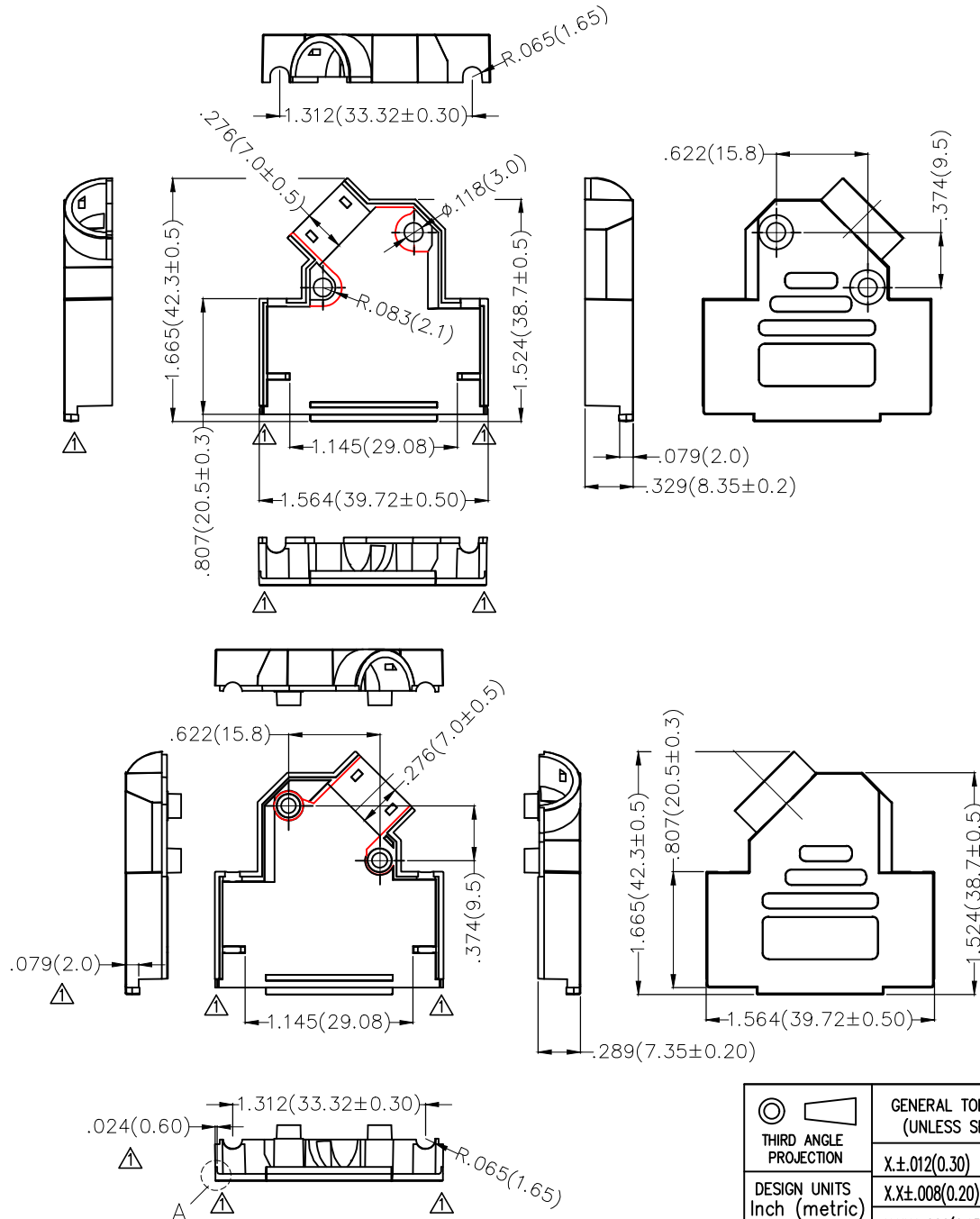



REV	LOCATIONS	DESCRIPTION	DATE	REVISER	APPD
1	△	Structure change	24/DEC/19	KATE	CHERRY

Material and plating
 Shell: Zinc alloy/ Nickel plated
 Screw 4-40#: Steel/ Nickel plated
 Short screw: Steel/ Nickel plated



THIRD ANGLE PROJECTION		GENERAL TOLERANCES (UNLESS SPECIFIED)		APPROVE BY	DATE	PART NO.	ITEM NO.	 Leader Of Industry
DESIGN UNITS Inch (metric)	SCALE	X.±0.012(0.30)	X.'±5'	FRANK	25/JUN/13	FDB1501-C200BA	FDB1501-C	
	SIZE	X.XX±.008(0.20)	X'±2'	CHECKED BY	DATE	D-SUB Connectors 15 Circuits Cover		
	5:1	A4	X.XX±.006(0.15)	.XX'±1'	JACOB	25/JUN/13	REV 1	SHEET NO. 1/1
		X.XXX±.004(0.10)	.XXX'±0.5'	DRAWN BY	DATE			
				CHERRY	25/JUN/13			

X-ON Electronics

Largest Supplier of Electrical and Electronic Components

Click to view similar products for [Headers & Wire Housings](#) category:

Click to view products by [TXGA](#) manufacturer:

Other Similar products are found below :

[0015917161](#) [0022155065](#) [57102-F02-18ULF](#) [58102-G61-06LF](#) [582553-1](#) [01.001.5753.1](#) [0050291907](#) [02.125.8002.8](#) [609-3404](#) [61062-3](#)
[CSU011177004](#) [622-0430](#) [622-3653LF](#) [63453-116](#) [636-1030](#) [636-1427](#) [636-3427](#) [636-4007](#) [641938-9](#) [65495-038](#) [65692-001LF](#) [65781-018](#)
[65781-047](#) [65817-010LF](#) [65817-015LF](#) [67095-007LF](#) [67601157](#) [68631-112](#) [68645-018](#) [699319-000](#) [70.362.1628.0](#) [70-4210](#) [70-4226B](#) [70-](#)
[4853B](#) [71.350.2428.0](#) [733-134](#) [733-162](#) [760-3052](#) [MHR-64-VUAL](#) [80.063.4001.1](#) [800-90-001-10-001000](#) [801-43-002-10-013000](#)
[801-43-006-10-002000](#) [803-43-024-10-001000](#) [803-93-012-10-001000](#) [8-1437020-4](#) [819-22-004-30-001101](#) [820-22-006-30-001101](#)
[820-22-008-30-001101](#) [821-22-002-10-001101](#)