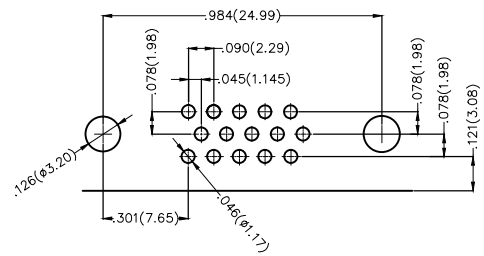
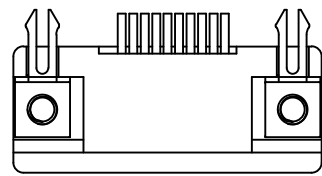
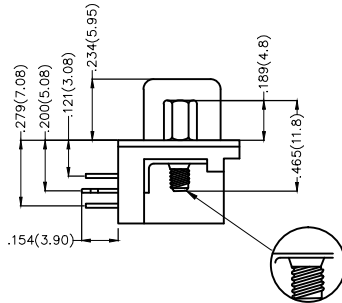
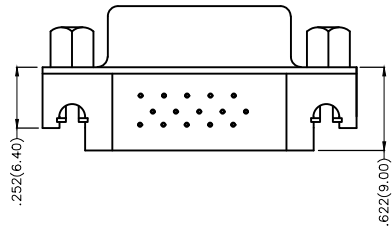
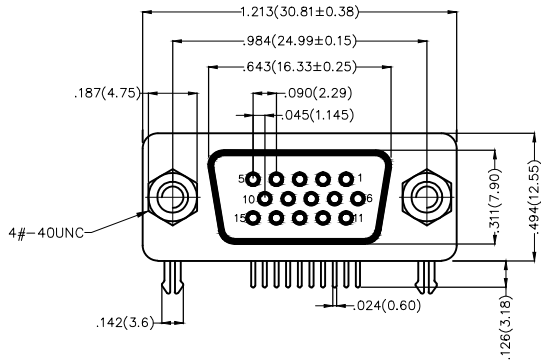


1 2 3 4 5 6 7 8

REV	LOCATIONS	DESCRIPTION	DATE	REVISER	APPD



Recommended P.C.Board Layout

Electrical

Current Rating: 3A AC(rms)/DC
 Voltage Rating: 250V AC(rms)/DC
 Contact Resistance: 25 mΩ Max
 Insulation Resistance: 1000 MΩ MIN
 Withstanding Voltage: 500V AC r.m.s
 Temperature Range—Operating: -55°C~+105°C


Material and Plating

Housing: PBT(UL 94V-0)
 Contact Pin: Phosphor Bronze
 Plating: Selective gold in contact area, tin on tail

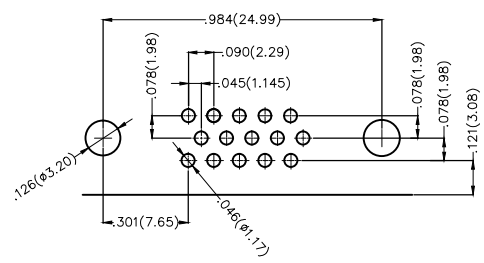
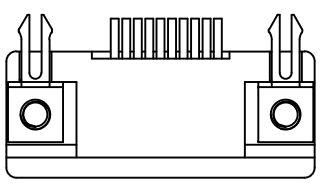
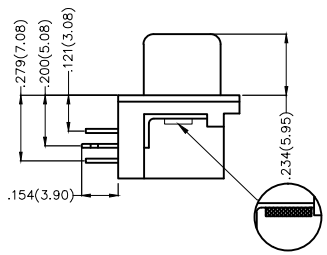
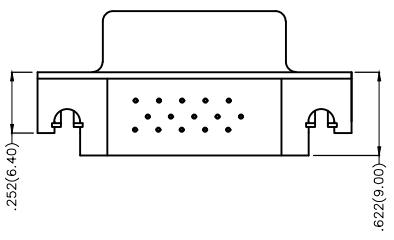
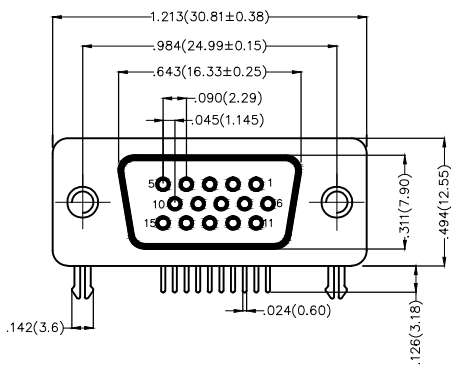
Ordering Information

FDB 15 19 — F0 D B 3 XX XX X A
 1 2 3 4 5 6 7 8 9 10 11

1 Category FDB-D-SUB Connectors	2 Circuits 15-15Circuits	3 Distinction No. 19	4 Type F0-Female	5 Assembly Layout D-DIP	6 Entry Angle B-90° Angle
7 Plating 3-Selective gold in contact area, tin on tail	8 Thickness of Plating 00-Gold Flash 03-3μ" Custom plate available	9 Color-Resin K6-Black U1-Blue	10 Packaging L-Tube K-Tray	11 Distinction Type A-A Type	

THIRD ANGLE PROJECTION	GENERAL TOLERANCES (UNLESS SPECIFIED)		APPROVE BY FRANK	DATE 25/JUN/13	PART NO. FDB1519-F0DB3XXXXXA	ITEM NO. FDB1519	 Leader Of Industry	
	DESIGN UNITS Inch (metric)	X.±.012(0.30) X.X±.008(0.20) X.XX±.006(0.15) X.XXX±.004(0.10)	X.±5' .X'±2' .XX'±1' .XXX'±0.5'	CHECKED BY JACOB	DATE 25/JUN/13	TITLE D-SUB Connectors 15 Circuits 90° Angl Female		REV 0
SCALE 5:1	SIZE A4	DRAWN BY CHERRY		DATE 25/JUN/13	THIS DRAWING CONTAINS INFORMATION THAT IS PROPRIETARY TO TXGA INDUSTRIAL ELECTRONICS(S.Z)CO.,LTD AND SHOULD NOT BE USED WITHOUT WRITTEN PERMISSION			

REV	LOCATIONS	DESCRIPTION	DATE	REVISER	APPD



Recommended P.C.Board Layout

Electrical

Current Rating: 3A AC(rms)/DC
 Voltage Rating: 250V AC(rms)/DC
 Contact Resistance: 25 mΩ Max
 Insulation Resistance: 1000 MΩ MIN
 Withstanding Voltage: 500V AC r.m.s
 Temperature Range—Operating: -55°C~+105°C

Material and Plating

Housing: PBT(UL 94V-0)
 Contact Pin: Phosphor Bronze
 Plating: Selective gold in contact area, tin on tail

Ordering Information

FDB 15 19 — F0 D B 3 XX XX X B
 1 2 3 4 5 6 7 8 9 10 11

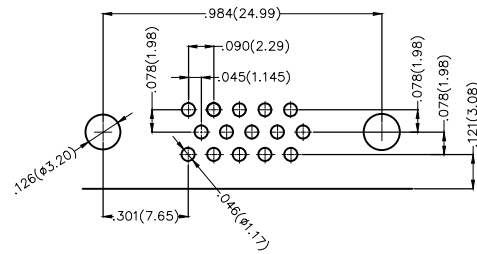
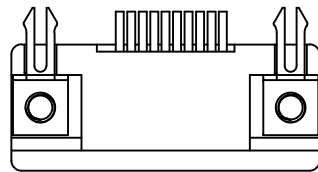
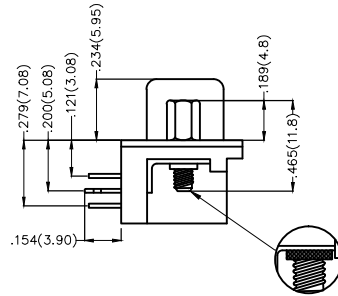
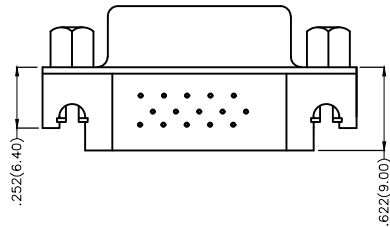
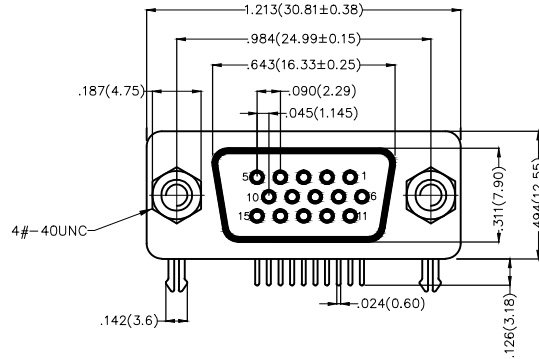
1	Category FDB-D-SUB Connectors	2	Circuits 15-15Circuits	3	Distinction No. 19	4	Type F0-Female	5	Assembly Layout D-DIP	6	Entry Angle B-90° Angle
7	Plating 3-Selective gold in contact area, tin on tail	8	Thickness of Plating 00-Gold Flash 03-3μ" Custom plate available	9	Color-Resin K6-Black U1-Blue	10	Packaging L-Tube K-Tray	11	Distinction Type B-B Type		

<p>THIRD ANGLE PROJECTION</p>	GENERAL TOLERANCES (UNLESS SPECIFIED)		APPROVE BY FRANK	DATE 25/JUN/13	PART NO. FDB1519-F0DB3XXXXXB	ITEM NO. FDB1519	<p>Leader Of Industry</p>	
	DESIGN UNITS Inch (metric)	X.±.012(0.30) X.X±.008(0.20) X.XX±.006(0.15) X.XXX±.004(0.10)	X.'±5' .X'±2' .XX'±1' .XXX'±0.5'	CHECKED BY JACOB	DATE 25/JUN/13	TITLE D-SUB Connectors 15 Circuits 90° Angl Female		REV 0
SCALE 5:1	SIZE A4	DRAWN BY CHERRY		DATE 25/JUN/13	THIS DRAWING CONTAINS INFORMATION THAT IS PROPRIETARY TO TXGA INDUSTRIAL ELECTRONICS(S.Z)CO.,LTD AND SHOULD NOT BE USED WITHOUT WRITTEN PERMISSION			

A
B
C
D
E
F

A
B
C
D
E
F

REV	LOCATIONS	DESCRIPTION	DATE	REVISER	APPD



Recommended P.C.Board Layout

Electrical

Current Rating: 3A AC(rms)/DC
 Voltage Rating: 250V AC(rms)/DC
 Contact Resistance: 25 mΩ Max
 Insulation Resistance: 1000 MΩ MIN
 Withstanding Voltage: 500V AC r.m.s
 Temperature Range—Operating: -55°C~+105°C

Material and Plating

Housing: PBT(UL 94V-0)
 Contact Pin: Phosphor Bronze
 Plating: Selective gold in contact area, tin on tail

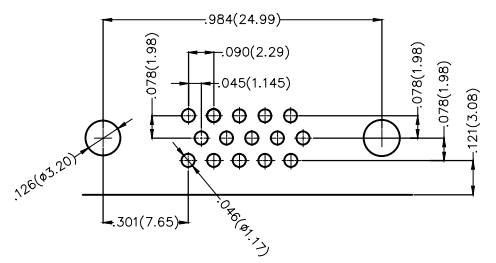
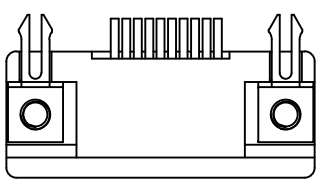
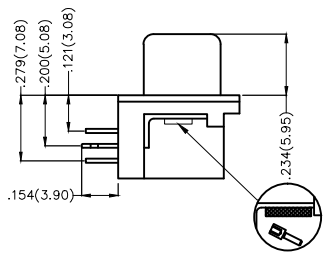
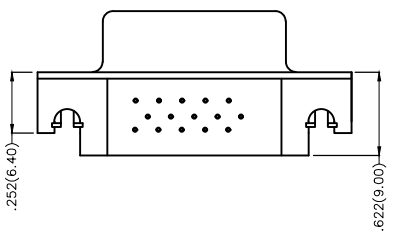
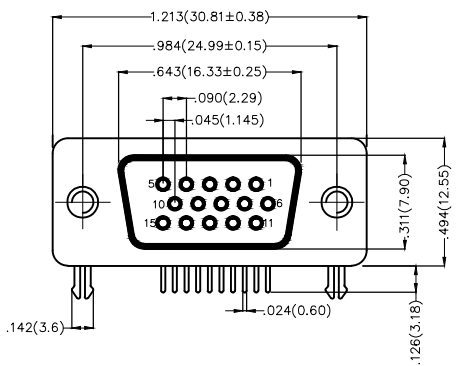
Ordering Information

FDB 15 19 — F0 D B 3 XX XX X C
 1 2 3 4 5 6 7 8 9 10 11

1 Category FDB-D-SUB Connectors	2 Circuits 15-15Circuits	3 Distinction No. 19	4 Type F0-Female	5 Assembly Layout D-DIP	6 Entry Angle B-90° Angle
7 Plating 3-Selective gold in contact area, tin on tail	8 Thickness of Plating 00-Gold Flash 03-3μ" Custom plate available	9 Color-Resin K6-Black U1-Blue	10 Packaging L-Tube K-Tray	11 Distinction Type C-C Type	

<p>THIRD ANGLE PROJECTION</p>	GENERAL TOLERANCES (UNLESS SPECIFIED)		APPROVE BY FRANK	DATE 25/JUN/13	PART NO. FDB1519-F0DB3XXXXXC	ITEM NO. FDB1519	<p>Leader Of Industry</p>
	DESIGN UNITS Inch (metric)	X.±.012(0.30)	X'.±5'	CHECKED BY JACOB	DATE 25/JUN/13	TITLE D-SUB Connectors 15 Circuits 90° Angl Female	
SCALE 5:1	SIZE A4	X.XX±.006(0.15)	.XX'±1'	DRAWN BY CHERRY	DATE 25/JUN/13	THIS DRAWING CONTAINS INFORMATION THAT IS PROPRIETARY TO TXGA INDUSTRIAL ELECTRONICS(S.Z)CO.,LTD AND SHOULD NOT BE USED WITHOUT WRITTEN PERMISSION	
		X.XXX±.004(0.10)	.XXX'±0.5'			REV 0	SHEET NO. 1/1

REV	LOCATIONS	DESCRIPTION	DATE	REVISER	APPD



Recommended P.C.Board Layout

Electrical

Current Rating: 3A AC(rms)/DC
 Voltage Rating: 250V AC(rms)/DC
 Contact Resistance: 25 mΩ Max
 Insulation Resistance: 1000 MΩ MIN
 Withstanding Voltage: 500V AC r.m.s
 Temperature Range—Operating: -55°C~+105°C

Material and Plating

Housing: PBT(UL 94V-0)
 Contact Pin: Phosphor Bronze
 Plating: Selective gold in contact area, tin on tail

Ordering Information

FDB 15 19 — F0 D B 3 XX XX X D
 1 2 3 4 5 6 7 8 9 10 11

1	Category FDB-D-SUB Connectors	2	Circuits 15-15Circuits	3	Distinction No. 19	4	Type F0-Female	5	Assembly Layout D-DIP	6	Entry Angle B-90° Angle
7	Plating 3-Selective gold in contact area, tin on tail	8	Thickness of Plating 00-Gold Flash 03-3μ" Custom plate available	9	Color-Resin K6-Black U1-Blue	10	Packaging L-Tube K-Tray	11	Distinction Type D-D Type		

<p>THIRD ANGLE PROJECTION</p>	GENERAL TOLERANCES (UNLESS SPECIFIED)		APPROVE BY FRANK	DATE 25/JUN/13	PART NO. FDB1519-F0DB3XXXXXD	ITEM NO. FDB1519	<p>Leader Of Industry</p>
	DESIGN UNITS Inch (metric)	X.±.012(0.30)	X.±5'	CHECKED BY JACOB	DATE 25/JUN/13	TITLE D-SUB Connectors 15 Circuits 90° Angl Female	
SCALE 5:1	SIZE A4	X.XX±.008(0.20)	X.±2'	DRAWN BY CHERRY	DATE 25/JUN/13	THIS DRAWING CONTAINS INFORMATION THAT IS PROPRIETARY TO TXGA INDUSTRIAL ELECTRONICS(S.Z)CO.,LTD AND SHOULD NOT BE USED WITHOUT WRITTEN PERMISSION	
						REV 0	SHEET NO. 1/1

A
B
C
D
E
F

A
B
C
D
E
F

X-ON Electronics

Largest Supplier of Electrical and Electronic Components

Click to view similar products for [D-Sub Standard Connectors](#) category:

Click to view products by [TXGA](#) manufacturer:

Other Similar products are found below :

[015-0339-000](#) [015-0341-000](#) [015-0349-000](#) [015-0350-000](#) [015-8544-011](#) [015-8755-001](#) [017041-0005](#) [020419-0104](#) [609-25P](#) [609-9P](#) [CT0-24-10SC](#) [CT0-36-3PC](#) [CT0E20-8PS](#) [CT0F16S-1PS](#) [CT0TA16-11SXCA232](#) [CT1E20-19SS](#) [CT2-10SL-3SC](#) [CT2-14S-2PCA34](#) [CT2-18-11PCAU](#) [CT2-22-19SC](#) [CT2-36-5PC](#) [CT6-10SL-3SC](#) [CT6-10SL-4SC](#) [CT6-14S-2SC](#) [CT6-16-12SC](#) [CT6-18-10PSA206](#) [CT6-18-10PSA232](#) [CT6-18-11PXSA206](#) [CT6-18-11PXSA232](#) [CT6-22-10PS](#) [CT6-24-5PC](#) [CT6-9767-18-8-18-4SS](#) [CT6E14S-5SC](#) [CT6E14SA7SC](#) [CT6E20-14SS](#) [CT6E22-14PC](#) [CT6E22-14PS](#) [CT6E22-19PS](#) [CT6E22-22PS](#) [CT6E24-10SC](#) [CT6F16S-1SC](#) [CT6FA10SL-4PS](#) [CT6LA20-19PC](#) [CT6M20-19SS](#) [CT6NSB4-20-8SS](#) [CT6TC14S-6SCAU](#) [CT6TC14S-7PS](#) [6STD15SCT99S40X](#) [6STF09PCM05B70X](#) [D20420-80](#)