

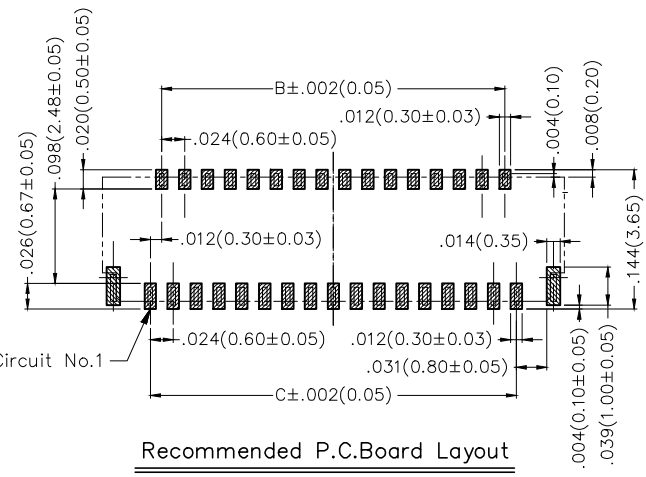
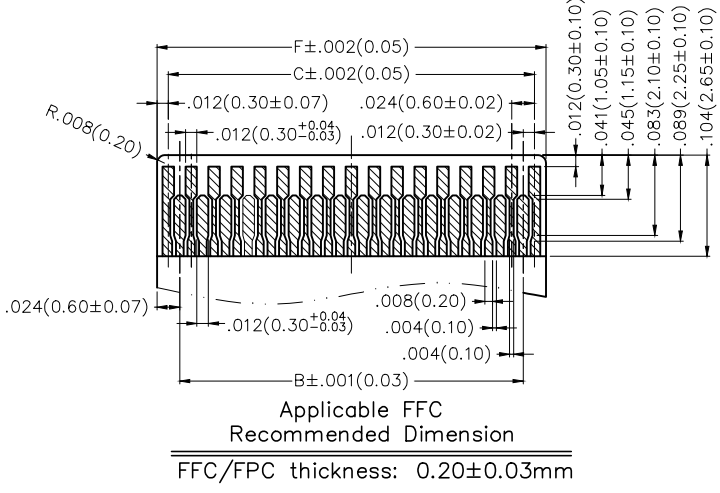
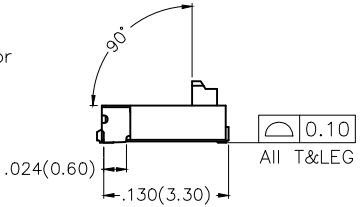
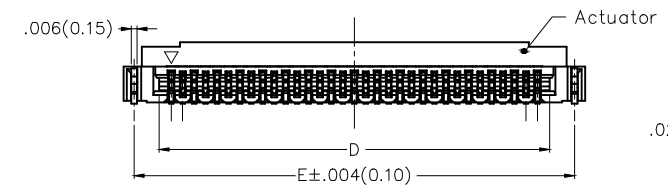
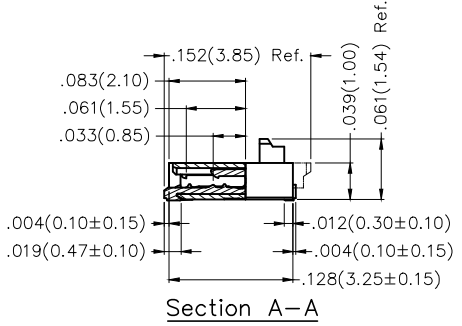
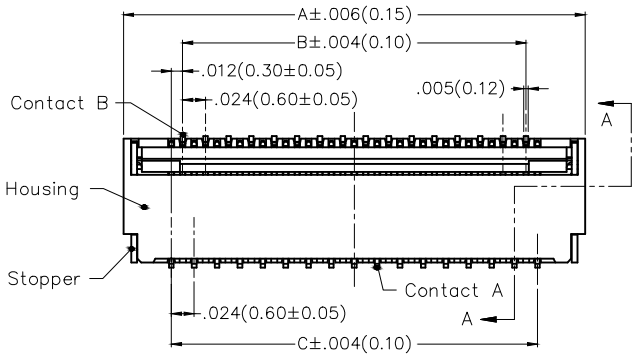
1 2 3 4 5 6 7 8

REV	LOCATIONS	DESCRIPTION	DATE	REVISER	APPD

SPECIFICATIONS

Electrical
 Current Rating: 0.3A AC(rms)/DC
 Voltage Rating: 30V AC(rms)/DC
 Contact Resistance: 20 mΩ Max
 Insulation Resistance: 50 MΩ Min
 Withstanding Voltage: 200V AC r.m.s
 Temperature Range-Operating: -55°C~+85°C

Material and Plating
 Housing: LCP UL 94V-0/ Natural
 Actuator: LCP UL 94V-0/ Black
 Terminal: Copper Alloy/ Gold Plated
 Stopper: Copper Alloy/ Tin Plated




Recommended P.C. Board Layout
 General Tolerances: ±0.05mm

Ordering Information

FFC 030 09 — XX S B D 1 1 3 W5 M
 1 2 3 4 5 6 7 8 9 10 11 12

1 Category FFC-FPC	2 Series Number 030-Pitch0.30mm	3 Distinction No. 09	4 Circuits XX	5 Assemble Layout S-SMT	6 Entry Angle B-90° Angle
7 Contact Type D-Double Contact	8 ZIF 1-ZIF	9 Plating 1-Gold Plated	10 Material-Resin 3-LCP	11 Color-Resin W5-Housing: Natural, Actuator: Black	12 Packaging M-Reel

THIRD ANGLE PROJECTION	GENERAL TOLERANCES (UNLESS SPECIFIED)		APPROVE BY FRANK	DATE 08/DEC/16	PART NO. FFC03009-XXSBD113W5M	ITEM NO. FFC03009	 Leader Of Industry
	X.X±.012(0.30)	X'±5'	CHECKED BY CHERRY	DATE 08/DEC/16	TITLE FPC/FFC connector 0.3mm Double contact SMT		
DESIGN UNITS Inch (metric)	X.X±.008(0.20)	X'±2'	DRAWN BY KATE	DATE 08/DEC/16	THIS DRAWING CONTAINS INFORMATION THAT IS PROPRIETARY TO TXGA INDUSTRIAL ELECTRONICS(S.Z)CO.,LTD AND SHOULD NOT BE USED WITHOUT WRITTEN PERMISSION		REV 0
SCALE 5:1	SIZE A4	X.XX±.006(0.15)					SHEET NO. 1/3
		X.XXX±.004(0.10)					

1 2 3 4 5 6 7 8

1 2 3 4 5 6 7 8

REV	LOCATIONS	DESCRIPTION	DATE	REVISER	APPD

A

B

C

D

E

F

A

B

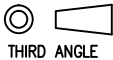

C

D

E

F

Circuits (n)	Part No.	Dimensions(in/mm)					
		A	B	C	D	E	F
11	FFC03009-11SBD113W5M	.217(5.50)	.094(2.40)	.118(3.00)	.143(3.63)	.195(4.95)	.142(3.60)
15	FFC03009-15SBD113W5M	.264(6.70)	.142(3.60)	.165(4.20)	.190(4.83)	.242(6.15)	.189(4.80)
21	FFC03009-21SBD113W5M	.335(8.50)	.213(5.40)	.236(6.00)	.261(6.63)	.313(7.95)	.260(6.60)
23	FFC03009-23SBD113W5M	.358(9.10)	.236(6.00)	.260(6.60)	.285(7.23)	.337(8.55)	.283(7.20)
25	FFC03009-25SBD113W5M	.382(9.70)	.260(6.60)	.283(7.20)	.308(7.83)	.360(9.15)	.307(7.80)
31	FFC03009-31SBD113W5M	.453(11.50)	.331(8.40)	.354(9.00)	.379(9.63)	.431(10.95)	.378(9.60)
33	FFC03009-33SBD113W5M	.476(12.10)	.354(9.00)	.378(9.60)	.403(10.23)	.455(11.55)	.402(10.20)
35	FFC03009-35SBD113W5M	.500(12.70)	.378(9.60)	.402(10.20)	.426(10.83)	.478(12.15)	.425(10.80)
39	FFC03009-39SBD113W5M	.547(13.90)	.425(10.80)	.449(11.40)	.474(12.03)	.526(13.35)	.472(12.00)
41	FFC03009-41SBD113W5M	.571(14.50)	.449(11.40)	.472(12.00)	.497(12.63)	.549(13.95)	.496(12.60)
45	FFC03009-45SBD113W5M	.618(15.70)	.496(12.60)	.520(13.20)	.544(13.83)	.596(15.15)	.543(13.80)
51	FFC03009-51SBD113W5M	.689(17.50)	.567(14.40)	.591(15.00)	.615(15.63)	.667(16.95)	.614(15.60)

 THIRD ANGLE PROJECTION	GENERAL TOLERANCES (UNLESS SPECIFIED)		APPROVE BY FRANK	DATE 08/DEC/16	PART NO. FFC03009-XXSBD113W5M	ITEM NO. FFC03009	 Leader Of Industry	
	X.±.012(0.30)	X'±5'	CHECKED BY CHERRY	DATE 08/DEC/16	TITLE FPC/FFC connector 0.3mm Double contact SMT			REV 0
	DESIGN UNITS Inch (metric)	X.X±.008(0.20)	X'±2'	DRAWN BY KATE	DATE 08/DEC/16	THIS DRAWING CONTAINS INFORMATION THAT IS PROPRIETARY TO TXGA INDUSTRIAL ELECTRONICS(S.Z)CO.,LTD AND SHOULD NOT BE USED WITHOUT WRITTEN PERMISSION		
	SCALE 5:1	SIZE A4	X.XX±.006(0.15)	X'±1'	X.XXX±.004(0.10)	X'±0.5'		

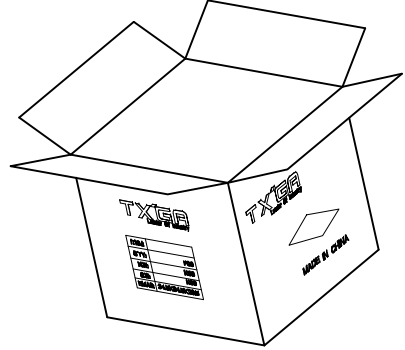
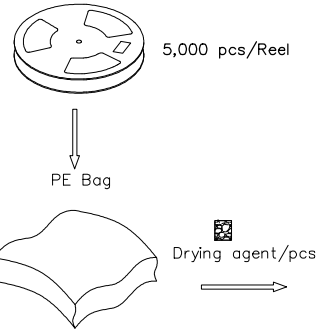
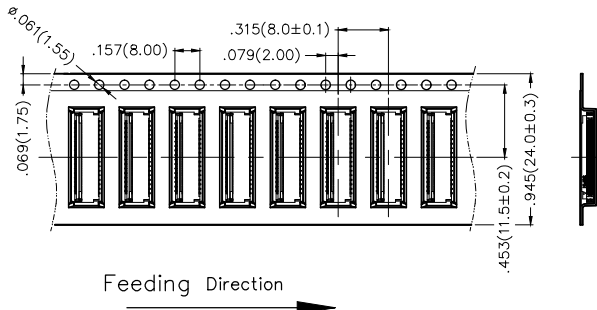
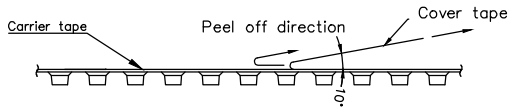
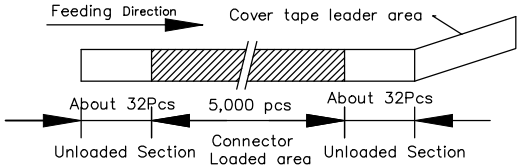
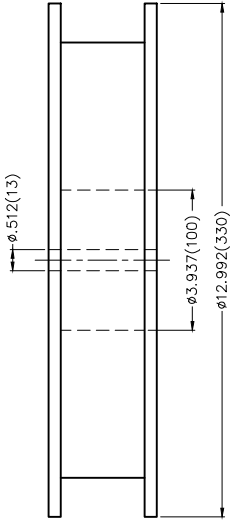
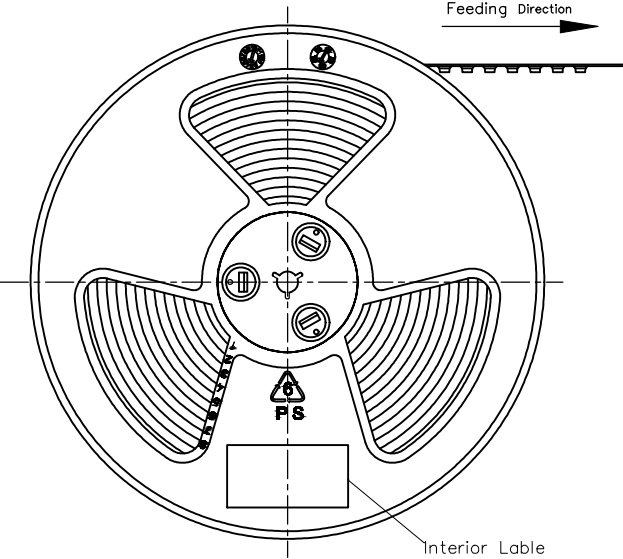
1 2 3 4 5 6 7 8

1 2 3 4 5 6 7 8

REV	LOCATIONS	DESCRIPTION	DATE	REVISER	APPD

Note:

1. 10 sprocket hole cumulative tolerance ± 0.2
2. Carrier camber is within 1.0mm in 250mm
3. Material: White Conductive polystyrene Alloy 100% recyclable
4. All dimensions meet EIA-481-3 requirements
5. Peel off force of cover tape & carrier tape: 20g~130g (0.2N~1.3N)
6. Component load per 13" reel: 5,000 pcs



A
B
C
D
E
F

A
B
C
D
E
F

 THIRD ANGLE PROJECTION	GENERAL TOLERANCES (UNLESS SPECIFIED)		APPROVE BY FRANK	DATE 08/DEC/16	PART NO. FFC03009-XXSBD113W5M	ITEM NO. FFC03009	 Leader Of Industry	
	X.X \pm .012(0.30)	X.' \pm 5'	CHECKED BY CHERRY	DATE 08/DEC/16	TITLE FPC/FFC connector 0.3mm Double contact SMT			
DESIGN UNITS Inch (metric)	X.X \pm .008(0.20)	X.' \pm 2'	DRAWN BY KATE	DATE 08/DEC/16	THIS DRAWING CONTAINS INFORMATION THAT IS PROPRIETARY TO TXGA INDUSTRIAL ELECTRONICS(S.Z)CO.,LTD AND SHOULD NOT BE USED WITHOUT WRITTEN PERMISSION		REV 0	SHEET NO. 3/3
SCALE 5:1	SIZE A4	X.XX \pm .006(0.15)	X.XX' \pm 1'					
		X.XXX \pm .004(0.10)	X.XX' \pm 0.5'					

1 2 3 4 5 6 7 8

X-ON Electronics

Largest Supplier of Electrical and Electronic Components

Click to view similar products for [FFC & FPC Connectors](#) category:

Click to view products by [TXGA](#) manufacturer:

Other Similar products are found below :

[00-6200-227-022-800](#) [006205250500825+](#) [006205280500825+](#) [FPH-1602G](#) [086222026001800](#) [52610-0675](#) [62674-201121DLF](#) [52746-1671-TR250](#) [10051922-1610EHLF](#) [10051922-2810EHLF](#) [686322124422](#) [XF3M-2915-1B-R100](#) [AYF353125A](#) [AYF530665TA](#) [AYF534065TA](#) [20FLH-RSM1-TB](#) [PCA-7F-25-HL-3-G](#) [207356-1](#) [52807-0430](#) [FFC05011-10SBB114W5M](#) [502250-8027](#) [FH28K-40S-0.5SH](#) [200528-0260](#) [FH28K-10S-0.5SH](#) [501951-1250](#) [X05B20U43T](#) [0.5K-DX-30PWB](#) [DS1020-08-10VBT12](#) [THD0515-34CL-GF](#) [X05A10L28G](#) [ECC2841061EU](#) [20539-030E-01](#) [1.0K-DHQX-16PWB](#) [1.0K-DHQX-30PWB](#) [1775333-6](#) [10054365-202110ELF](#) [10054365-242110ELF](#) [10054365-282110ELF](#) [10064555-392220HLF](#) [59453-041110EBHLF](#) [59453-091110EDHLF](#) [62674-241141ALF](#) [62684-432100ALF](#) [62684-451100AHLF](#) [62684-5721N0ALF](#) [HFW11R-1STE1MTLF](#) [HFW12R-1STE9LF](#) [HFW14R-1STE9MTLF](#) [HFW18S-2STE9LF](#) [HFW20R-1STAE1HLF](#)