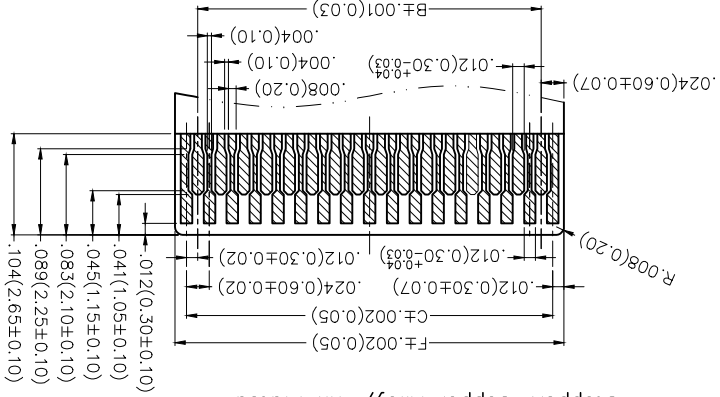


REV	LOCATIONS	DESCRIPTION	DATE	REVISER	APPD

SPECIFICATIONS

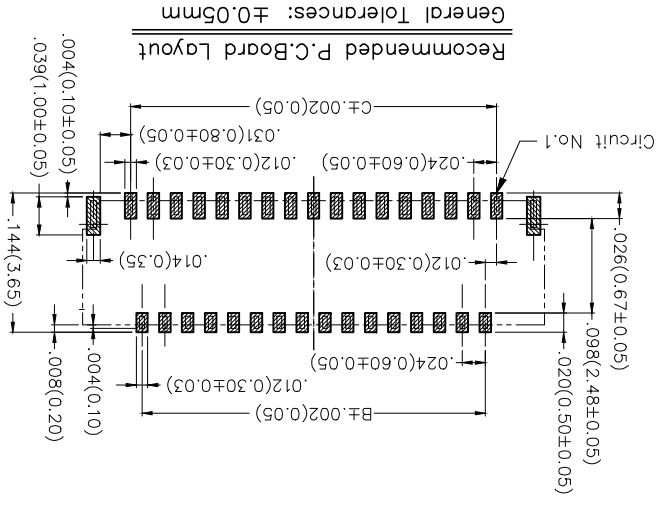
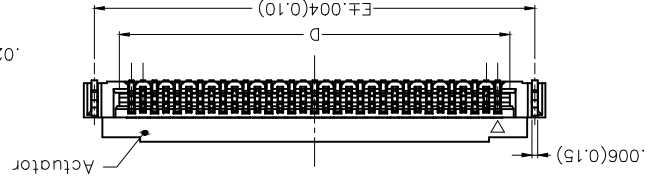
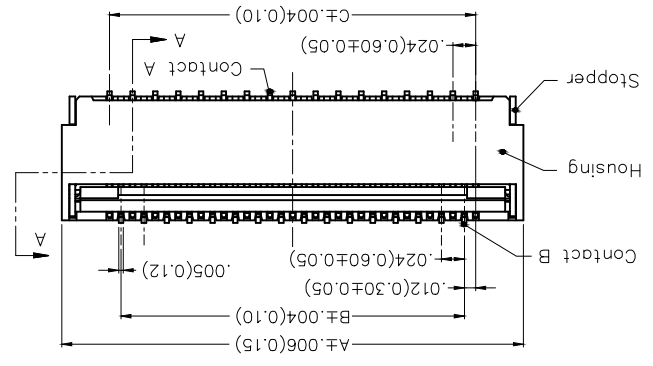
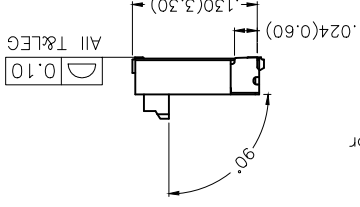
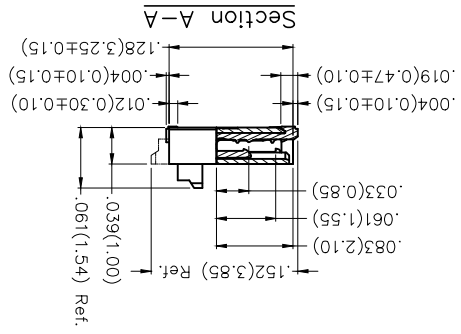
Electrical
 Current Rating: 0.3A AC(rms)/DC
 Voltage Rating: 30V AC(rms)/DC
 Contact Resistance: 20 mΩ Max
 Insulation Resistance: 50 MΩ Min
 Withstanding Voltage: 200V AC r.m.s
 Temperature Range—Operating: -55°C~+85°C
 Material and Plating
 Housing: LCP UL 94V-0/ Natural
 Actuator: LCP UL 94V-0/ Black
 Terminal: Copper Alloy/ Gold Plated
 Stopper: Copper Alloy/ Tin Plated



Applicable FFC
 Recommended Dimension
 FFC/FPC thickness: 0.20±0.03mm

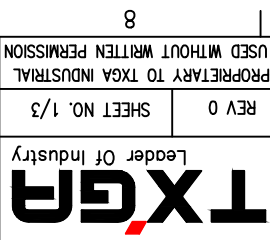
Ordering Information

1	Category	FFC-FPC
2	Series Number	030-Pitch0.30mm
3	Distinction No.	09
4	Circuits	XX
5	Assemble Layout	S-SMT
6	Entry Angle	B-90° Angle
7	Contact Type	D-Double Contact
8	ZIF	1-ZIF
9	Plating	1-Gold Plated
10	Material-Resin	3-LCP
11	Color-Resin	W5-Housing: Natural, Actuator: Black
12	Packaging	M-Reel



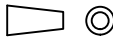


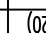
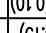


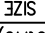
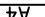



General Tolerances: ±0.05mm
 Recommended P.C. Board Layout

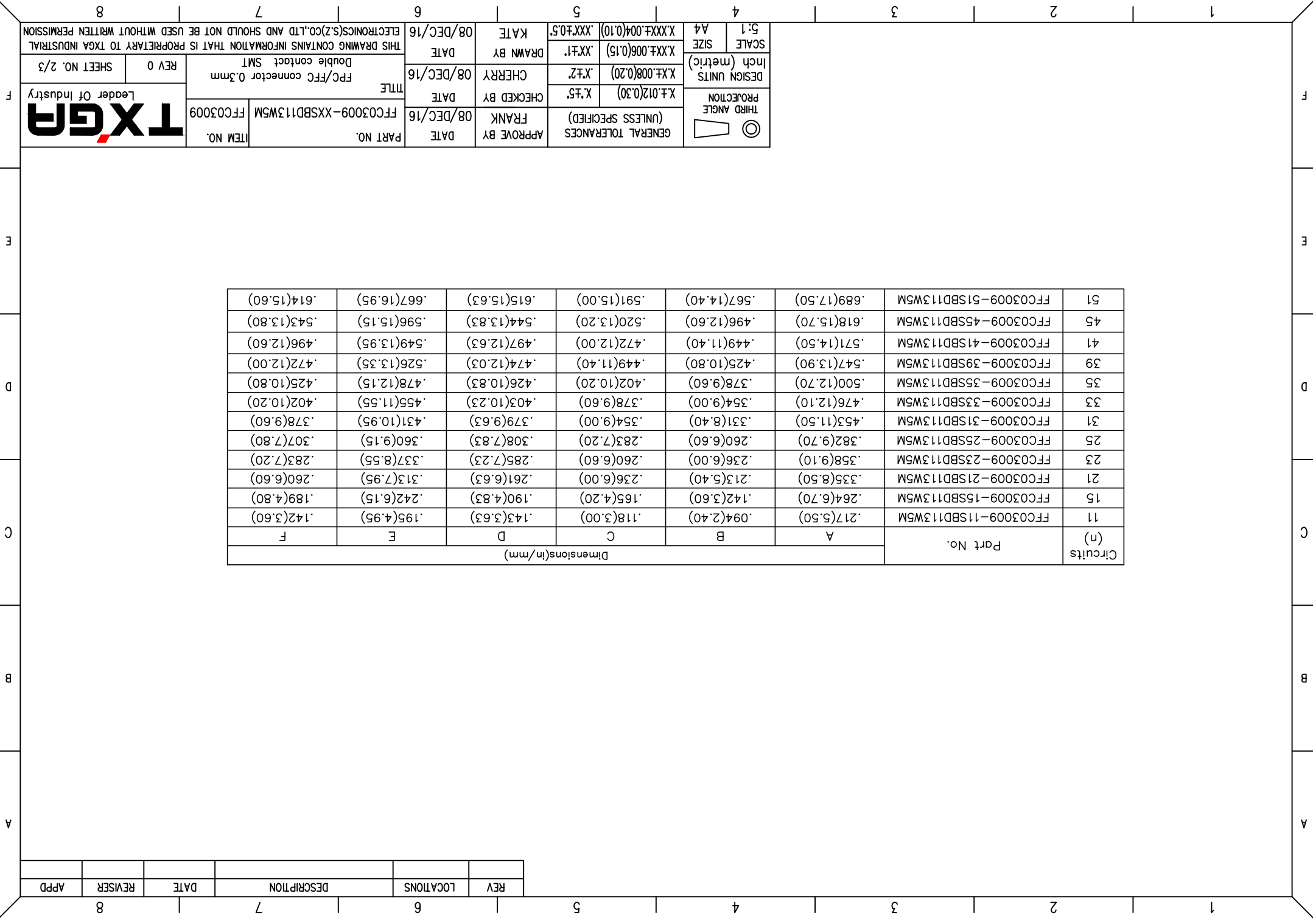
THIRD ANGLE PROJECTION	DESIGN UNITS	X.F.012(0.30)	X.F.5	CHECKED BY	FRANK	DATE	08/DEC/16	APPROVE BY	FRANK	DATE	08/DEC/16	PART NO.	FFC03009-XXSBD113WSM	ITEM NO.	FFC03009	TITLE	FPC/FCC connector 0.3mm Double contact SMT	REV 0	SHEET NO. 1/3
	SCALE	5:1	A4	DRAWN BY	KATE	DATE	08/DEC/16	GENERAL TOLERANCES (UNLESS SPECIFIED)	X.F.012(0.30)	X.F.5	DATE	08/DEC/16	DATE	08/DEC/16	DATE	08/DEC/16	THIS DRAWING CONTAINS INFORMATION THAT IS PROPRIETARY TO TXGA INDUSTRIAL ELECTRONICS(Z)CO.,LTD AND SHOULD NOT BE USED WITHOUT WRITTEN PERMISSION		



REV	LOCATIONS	DESCRIPTION	DATE	REVISER	APPD

Circuits (n)	Part No.	Dimensions(in/mm)			
		A	B	C	D
11	FFC03009-11SBD113W5M	.217(5.50)	.094(2.40)	.118(3.00)	.143(3.63)
15	FFC03009-15SBD113W5M	.264(6.70)	.142(3.60)	.165(4.20)	.190(4.83)
21	FFC03009-21SBD113W5M	.355(8.50)	.213(5.40)	.236(6.00)	.261(6.63)
23	FFC03009-23SBD113W5M	.358(9.10)	.236(6.00)	.260(6.60)	.285(7.23)
25	FFC03009-25SBD113W5M	.382(9.70)	.260(6.60)	.283(7.20)	.308(7.83)
31	FFC03009-31SBD113W5M	.453(11.50)	.331(8.40)	.354(9.00)	.379(9.63)
33	FFC03009-33SBD113W5M	.476(12.10)	.354(9.00)	.378(9.60)	.403(10.23)
35	FFC03009-35SBD113W5M	.500(12.70)	.378(9.60)	.402(10.20)	.426(10.83)
39	FFC03009-39SBD113W5M	.547(13.90)	.425(10.80)	.449(11.40)	.474(12.03)
41	FFC03009-41SBD113W5M	.571(14.50)	.449(11.40)	.472(12.00)	.497(12.63)
45	FFC03009-45SBD113W5M	.618(15.70)	.496(12.60)	.520(13.20)	.544(13.83)
51	FFC03009-51SBD113W5M	.689(17.50)	.567(14.40)	.591(15.00)	.615(15.63)

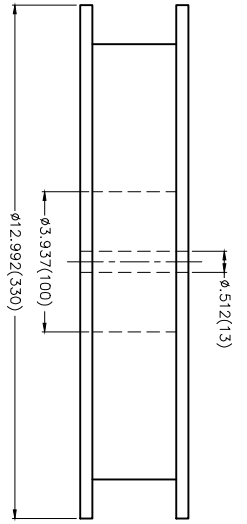
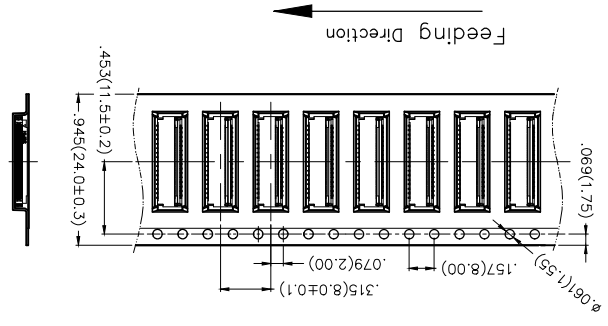
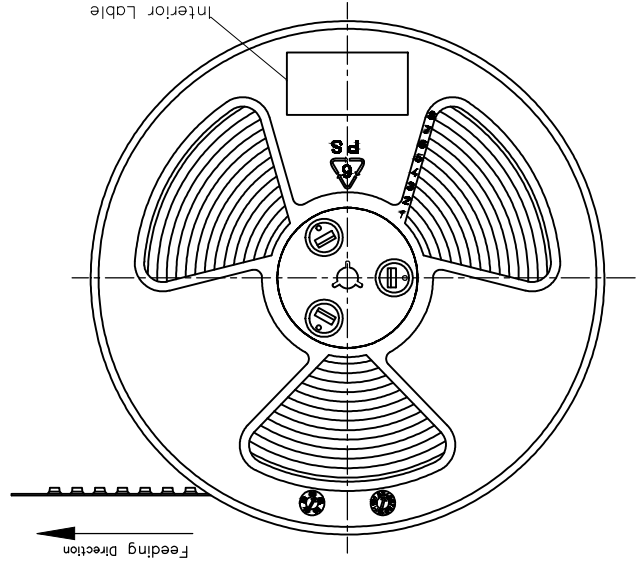
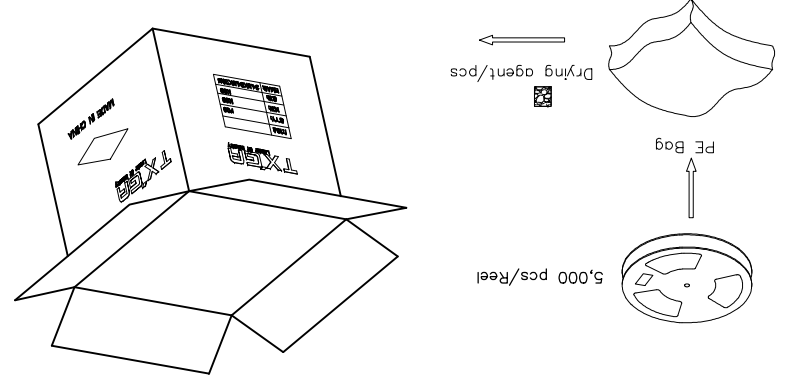
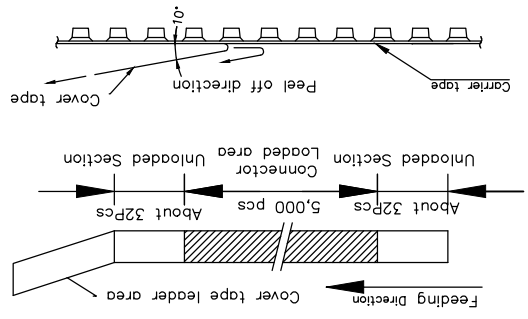
 THIRD ANGLE PROJECTION		DESIGN UNITS Inch (metric)	SCALE 5:1	A4	GENERAL TOLERANCES (UNLESS SPECIFIED)	APPROVE BY FRANK	DATE 08/DEC/16	PART NO. FFC03009-XXSBD113W5M	ITEM NO. FFC03009	 Leader Of Industry	
 X.±.012(0.30)		 X.X±.008(0.20)		 X.XX±.006(0.15)		 X.XX±.004(0.10)		 X.XX±.05		DRAWN BY KATE	DATE 08/DEC/16
 X.XX±.006(0.15)		 X.XX±.006(0.15)		 X.XX±.05		 X.XX±.05		 X.XX±.05		DOUBLE CONTACT SMT FPC/FPC connector 0.3mm	THIS DRAWING CONTAINS INFORMATION THAT IS PROPRIETARY TO TXGA INDUSTRIAL ELECTRONICS(SZ)CO.,LTD AND SHOULD NOT BE USED WITHOUT WRITTEN PERMISSION



REV	LOCATIONS	DESCRIPTION	DATE	REVISER	APPD

Note:

1. 10 sprocket hole cumulative tolerance±0.2
2. Carrier camber is within 1.0mm in 250mm
3. Material: White Conductive polystyrene Alloy 100% recyclable
4. All dimensions meet EIA-481-3 requirements
5. Peel off force of cover tape&carrier tape:20g~130g(0.2N~1.3N)
6. Component load per 13" reel: 5,000 pcs



GENERAL TOLERANCES (UNLESS SPECIFIED)	APPROVE BY	DATE	PART NO.	ITEM NO.
X.±.012(0.30)	FRANK	08/DEC/16	FFC03009-XXSBD113WSM	FFC03009
X.±.008(0.20)	CHECKED BY	DATE	TITLE	
X.±.006(0.15)	CHERRY	08/DEC/16	FPC/FPC connector 0.3mm Double contact SMT	
X.XX±.004(0.10)	DRAWN BY	DATE	REV 0	SHEET NO. 3/3
X.XX±.05'	KATE	08/DEC/16		

DESIGN UNITS: Inch (metric)
SCALE: 5:1
A4

THIRD ANGLE PROJECTION

GENERAL TOLERANCES (UNLESS SPECIFIED)

THIS DRAWING CONTAINS INFORMATION THAT IS PROPRIETARY TO TXGA INDUSTRIAL ELECTRONICS(SZ)CO.,LTD AND SHOULD NOT BE USED WITHOUT WRITTEN PERMISSION

TXGN Leader Of Industry

8 7 6 5 4 3 2 1

F E D C B A

X-ON Electronics

Largest Supplier of Electrical and Electronic Components

Click to view similar products for [FFC & FPC Connectors](#) category:

Click to view products by [TXGA](#) manufacturer:

Other Similar products are found below :

[HFW11R-1STE1H1LF](#) [FH29B-100S-0.2SHW\(99\)](#) [FA5S008HP1](#) [FH29B-120S-0.2SHW\(99\)](#) [FH29B-80S-0.2SHW\(99\)](#) [FHS-16](#) [FPH-2022G](#)
[52610-1075](#) [52610-1275](#) [52610-1934](#) [XF3M\(1\)-1415-1B-R100](#) [501864-3091-TR225](#) [0525594033](#) [086210010340800](#) [086222026001800](#)
[52271-2869-CUT-TAPE](#) [62674-201121DLF](#) [62684-36210E9ALF](#) [52610-1675](#) [52746-1671-TR250](#) [10051922-2810EHLF](#) [6-520415-9](#)
[BD021-09A-A1-0350-0200-0550-LD](#) [SFV6R-1STE9HLF](#) [XF3M-2915-1B-R100](#) [1658549-1](#) [62674-221121ALF](#) [46214008010800](#)
[046298003000883](#) [151660622](#) [842-816-2630-035](#) [AYF530665TA](#) [AYF351525](#) [046296011930846+](#) [AYF352325A](#) [046254020000800+](#)
[FH19C-13S-0.5SH\(99\)](#) [FH39J-51S-0.3SHW\(99\)](#) [AYF355125A](#) [AYF530365TA](#) [FH29B-44S-0.2SHW\(99\)](#) [SFW5R-2STAE9LF](#) [AYF351125A](#)
[AYF350725A](#) [62684-502100AHLF](#) [FH39-61S-0.3SHW\(99\)](#) [AYF414035A](#) [10064555-172520HLF](#) [AYF212335A](#) [504754-2500](#)