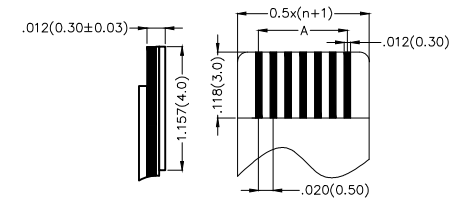
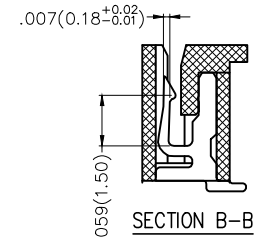
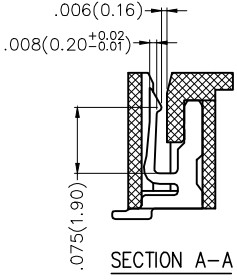
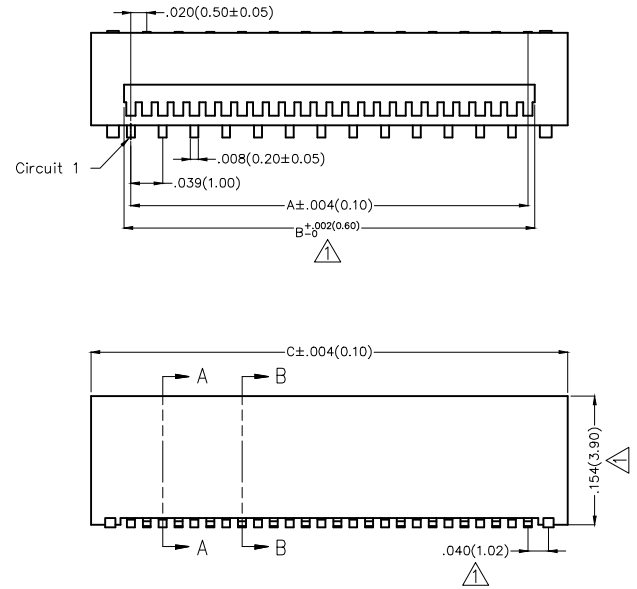


REV	LOCATIONS	DESCRIPTION	DATE	REVISER	APPD
1	△	Size changes	29/APR/21	KATE	JOHNNY

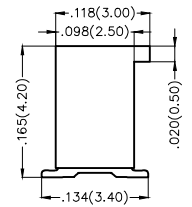
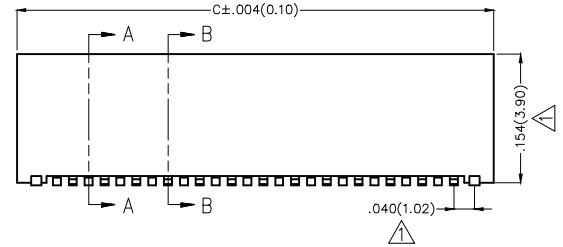
### SPECIFICATIONS

Electrical  
 Current Rating: 0.5A AC(rms)/DC  
 Voltage Rating: 50V AC(rms)/DC  
 Contact Resistanc: 20 m Ω Max  
 Insulation Resistance: 500 M Ω MIN  
 Withstanding Voltage: 500V AC r.m.s  
 Operting Temperature: -40°C~+85°C

Material  
 Housing: PA6T UL 94V-0  
 Contact: Phosphor Bronze/ Tin Plated



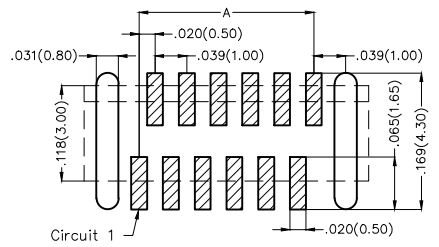
Applicable FFC  
Recommended Dimension




### Ordering Information

FFC 050 07 — XX S S A 2 2 4 W5 M  
 1 2 3 4 5 6 7 8 9 10 11 12

1   Category FFC-FPC	2   Series Number 050-Pitch0.50mm	3   Distinction No. 07	4   Circuits XX	5   Assemble Layout S-SMT	6   Entry Angle S-180° Vertical
7   Contact Position A-Positive Needle	8   ZIF 2-NON ZIF	9   Plating 2-Tin Plated	10   Material-Resin 4-PA6T	11   Color-Resin W5-Natural	12   Packaging M-Reel



Positive Needle  
Recommended P.C.Board Layout  
General tolerance: ±0.05mm

THIRD ANGLE PROJECTION		GENERAL TOLERANCES (UNLESS SPECIFIED)		APPROVE BY	DATE	PART NO.	ITEM NO.	 Leader Of Industry
		X.±.012(0.30)	X.±5'	FRANK	18/JUN/13	FFC05007-XXSSA224W5M	FFC05007	
DESIGN UNITS Inch (metric)		X.X±.008(0.20)	.X'±2'	CHECKED BY	DATE	TITLE FPC/FFC connector 0.5mm Positive needle SMT		REV 1
SCALE 5:1	SIZE A4	X.XX±.006(0.15)	.XX'±1'	DRAWN BY	DATE	THIS DRAWING CONTAINS INFORMATION THAT IS PROPRIETARY TO TXGA INDUSTRIAL ELECTRONICS(S.Z)CO.,LTD AND SHOULD NOT BE USED WITHOUT WRITTEN PERMISSION		
		X.XXX±.004(0.10)	.XXX'±0.5'	CHERRY	18/JUN/13			SHEET NO. 1/5

1 2 3 4 5 6 7 8

REV	LOCATIONS	DESCRIPTION	DATE	REVSER	APPD

A

A

B

B

C

C

D

D



E

E

F

F

Circuits (n)	Part No.	Dimensions(in/mm)			Circuits (n)	Part No.	Dimensions(in/mm)		
		A	B $\triangle$	C			A	B $\triangle$	C
4	FFC05007-04SSA224W5M	.059(1.50)	.098(2.50)	.197(5.00)	28	FFC05007-28SSA224W5M	.531(13.50)	.571(14.50)	.669(17.00)
5	FFC05007-05SSA224W5M	.079(2.00)	.118(3.00)	.217(5.50)	29	FFC05007-29SSA224W5M	.551(14.00)	.591(15.00)	.689(17.50)
6	FFC05007-06SSA224W5M	.098(2.50)	.138(3.50)	.236(6.00)	30	FFC05007-30SSA224W5M	.571(14.50)	.610(15.50)	.709(18.00)
7	FFC05007-07SSA224W5M	.118(3.00)	.157(4.00)	.256(6.50)	31	FFC05007-31SSA224W5M	.591(15.00)	.630(16.00)	.728(18.50)
8	FFC05007-08SSA224W5M	.138(3.50)	.177(4.50)	.276(7.00)	32	FFC05007-32SSA224W5M	.610(15.50)	.650(16.50)	.748(19.00)
9	FFC05007-09SSA224W5M	.157(4.00)	.197(5.00)	.295(7.50)	33	FFC05007-33SSA224W5M	.630(16.00)	.669(17.00)	.768(19.50)
10	FFC05007-10SSA224W5M	.177(4.50)	.217(5.50)	.315(8.00)	34	FFC05007-34SSA224W5M	.650(16.50)	.689(17.50)	.787(20.00)
11	FFC05007-11SSA224W5M	.197(5.00)	.236(6.00)	.335(8.50)	35	FFC05007-35SSA224W5M	.669(17.00)	.709(18.00)	.807(20.50)
12	FFC05007-12SSA224W5M	.217(5.50)	.256(6.50)	.354(9.00)	36	FFC05007-36SSA224W5M	.689(17.50)	.728(18.50)	.828(21.00)
13	FFC05007-13SSA224W5M	.236(6.00)	.276(7.00)	.374(9.50)	37	FFC05007-37SSA224W5M	.709(18.00)	.748(19.00)	.846(21.50)
14	FFC05007-14SSA224W5M	.256(6.50)	.295(7.50)	.394(10.00)	38	FFC05007-38SSA224W5M	.728(18.50)	.768(19.50)	.866(22.00)
15	FFC05007-15SSA224W5M	.276(7.00)	.315(8.00)	.413(10.50)	39	FFC05007-39SSA224W5M	.748(19.00)	.787(20.00)	.886(22.50)
16	FFC05007-16SSA224W5M	.295(7.50)	.335(8.50)	.433(11.00)	40	FFC05007-40SSA224W5M	.768(19.50)	.807(20.50)	.906(23.00)
17	FFC05007-17SSA224W5M	.315(8.00)	.354(9.00)	.453(11.50)	41	FFC05007-41SSA224W5M	.787(20.00)	.828(21.00)	.925(23.50)
18	FFC05007-18SSA224W5M	.335(8.50)	.374(9.50)	.472(12.00)	42	FFC05007-42SSA224W5M	.807(20.50)	.846(21.50)	.948(24.00)
19	FFC05007-19SSA224W5M	.354(9.00)	.394(10.00)	.492(12.50)	43	FFC05007-43SSA224W5M	.828(21.00)	.866(22.00)	.965(24.50)
20	FFC05007-20SSA224W5M	.374(9.50)	.413(10.50)	.512(13.00)	44	FFC05007-44SSA224W5M	.846(21.50)	.886(22.50)	.984(25.00)
21	FFC05007-21SSA224W5M	.394(10.00)	.433(11.00)	.531(13.50)	45	FFC05007-45SSA224W5M	.866(22.00)	.906(23.00)	1.004(25.50)
22	FFC05007-22SSA224W5M	.413(10.50)	.453(11.50)	.551(14.00)	46	FFC05007-46SSA224W5M	.886(22.50)	.925(23.50)	1.024(26.00)
23	FFC05007-23SSA224W5M	.433(11.00)	.472(12.00)	.571(14.50)	47	FFC05007-47SSA224W5M	.906(23.00)	.948(24.00)	1.043(26.50)
24	FFC05007-24SSA224W5M	.453(11.50)	.492(12.50)	.591(15.00)	48	FFC05007-48SSA224W5M	.925(23.50)	.965(24.50)	1.063(27.00)
25	FFC05007-25SSA224W5M	.472(12.00)	.512(13.00)	.610(15.50)	49	FFC05007-49SSA224W5M	.948(24.00)	.984(25.00)	1.083(27.50)
26	FFC05007-26SSA224W5M	.492(12.50)	.531(13.50)	.630(16.00)	50	FFC05007-50SSA224W5M	.965(24.50)	1.004(25.50)	1.102(28.00)
27	FFC05007-27SSA224W5M	.512(13.00)	.551(14.00)	.650(16.50)					

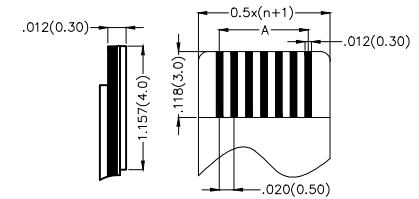
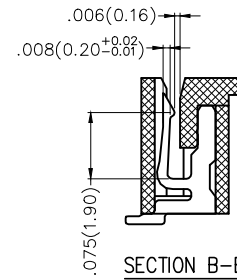
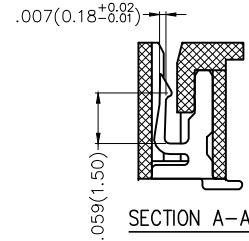
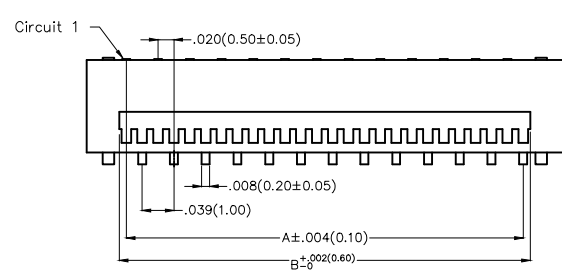
 THIRD ANGLE PROJECTION	GENERAL TOLERANCES (UNLESS SPECIFIED)		APPROVE BY	DATE	PART NO.	ITEM NO.	 Leader Of Industry
	X.±.012(0.30)	X'.±5'	FRANK	18/JUN/13	FFC05007-XXSSA224W5M	FFC05007	
	X.X±.008(0.20)	.X'±2'	CHECKED BY	DATE	TITLE		
	X.XX±.006(0.15)	.XX'±1'	JACOB	18/JUN/13	FPC/FFC connector 0.5mm Positive needle SMT		
SCALE	SIZE	X.XXX±.004(0.10)	.XXX'±0.5'	DRAWN BY	DATE	THIS DRAWING CONTAINS INFORMATION THAT IS PROPRIETARY TO TXGA INDUSTRIAL ELECTRONICS(S.Z)CO.,LTD AND SHOULD NOT BE USED WITHOUT WRITTEN PERMISSION	
5:1	A4			CHERRY	18/JUN/13	REV 1	SHEET NO. 2/5

1 2 3 4 5 6 7 8

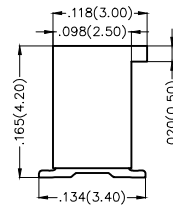
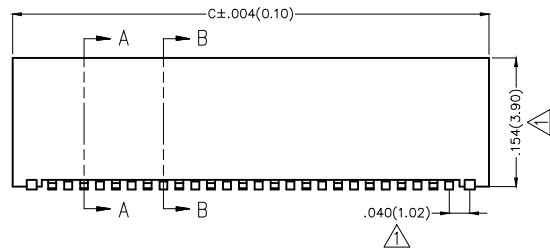
REV	LOCATIONS	DESCRIPTION	DATE	REVISER	APPD
1	△	Size changes	29/APR/21	KATE	JOHNNY

**SPECIFICATIONS**

Electrical  
 Current Rating: 0.5A AC(rms)/DC  
 Voltage Rating: 50V AC(rms)/DC  
 Contact Resistance: 20 mΩ Max  
 Insulation Resistance: 500 MΩ MIN  
 Withstanding Voltage: 500V AC r.m.s  
 Operating Temperature: -40°C~+85°C  
 Material  
 Housing: PA6T UL 94V-0  
 Contact: Phosphor Bronze/ Tin Plated



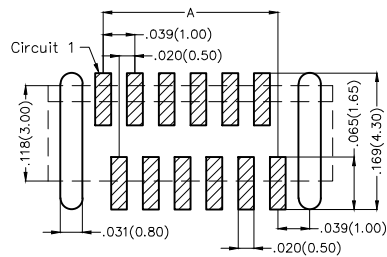
Applicable FFC Recommended Dimension



**Ordering Information**


FFC 050 07 — XX S S B 2 2 4 W5 M  
 1 2 3 4 5 6 7 8 9 10 11 12

1   Category FFC-FPC	2   Series Number 050-Pitch0.50mm	3   Distinction No. 07	4   Circuits XX	5   Assemble Layout S-SMT	6   Entry Angle S-180° Vertical
7   Contact Position B-Versa Needle	8   ZIF 2-NON ZIF	9   Plating 2-Tin Plated	10   Material-Resin 4-PA6T	11   Color-Resin W5-Natural	12   Packaging M-Reel



Versa Needle

Recommended P.C.Board Layout  
 General tolerance: ±0.05mm

THIRD ANGLE PROJECTION	GENERAL TOLERANCES (UNLESS SPECIFIED)		APPROVE BY FRANK	DATE 18/JUN/13	PART NO. FFC05007-XXSSB224W5M	ITEM NO. FFC05007	 Leader Of Industry	
	DESIGN UNITS Inch (metric)	X.±.012(0.30) X.X±.008(0.20) X.XX±.006(0.15) X.XXX±.004(0.10)	X'.±5' .X'±2' .XX'±1' .XXX'±0.5'	CHECKED BY JACOB	DATE 18/JUN/13	TITLE FPC/FFC connector 0.5mm Versa needle SMT		REV 1
SCALE 5:1	SIZE A4	DRAWN BY CHERRY		DATE 18/JUN/13	THIS DRAWING CONTAINS INFORMATION THAT IS PROPRIETARY TO TXGA INDUSTRIAL ELECTRONICS(S.Z)CO.,LTD AND SHOULD NOT BE USED WITHOUT WRITTEN PERMISSION			SHEET NO. 3/5

1 2 3 4 5 6 7 8

REV	LOCATIONS	DESCRIPTION	DATE	REVISED	APPD

A

A

B

B

C

C

D

D



E

E

F

F

Circuits (n)	Part No.	Dimensions(in/mm)			Circuits (n)	Part No.	Dimensions(in/mm)		
		A	B $\triangle$	C			A	B $\triangle$	C
4	FFC05007-04SSB224W5M	.059(1.50)	.098(2.50)	.197(5.00)	28	FFC05007-28SSB224W5M	.531(13.50)	.571(14.50)	.669(17.00)
5	FFC05007-05SSB224W5M	.079(2.00)	.118(3.00)	.217(5.50)	29	FFC05007-29SSB224W5M	.551(14.00)	.591(15.00)	.689(17.50)
6	FFC05007-06SSB224W5M	.098(2.50)	.138(3.50)	.236(6.00)	30	FFC05007-30SSB224W5M	.571(14.50)	.610(15.50)	.709(18.00)
7	FFC05007-07SSB224W5M	.118(3.00)	.157(4.00)	.256(6.50)	31	FFC05007-31SSB224W5M	.591(15.00)	.630(16.00)	.728(18.50)
8	FFC05007-08SSB224W5M	.138(3.50)	.177(4.50)	.276(7.00)	32	FFC05007-32SSB224W5M	.610(15.50)	.650(16.50)	.748(19.00)
9	FFC05007-09SSB224W5M	.157(4.00)	.197(5.00)	.295(7.50)	33	FFC05007-33SSB224W5M	.630(16.00)	.669(17.00)	.768(19.50)
10	FFC05007-10SSB224W5M	.177(4.50)	.217(5.50)	.315(8.00)	34	FFC05007-34SSB224W5M	.650(16.50)	.689(17.50)	.787(20.00)
11	FFC05007-11SSB224W5M	.197(5.00)	.236(6.00)	.335(8.50)	35	FFC05007-35SSB224W5M	.669(17.00)	.709(18.00)	.807(20.50)
12	FFC05007-12SSB224W5M	.217(5.50)	.256(6.50)	.354(9.00)	36	FFC05007-36SSB224W5M	.689(17.50)	.728(18.50)	.828(21.00)
13	FFC05007-13SSB224W5M	.236(6.00)	.276(7.00)	.374(9.50)	37	FFC05007-37SSB224W5M	.709(18.00)	.748(19.00)	.846(21.50)
14	FFC05007-14SSB224W5M	.256(6.50)	.295(7.50)	.394(10.00)	38	FFC05007-38SSB224W5M	.728(18.50)	.768(19.50)	.866(22.00)
15	FFC05007-15SSB224W5M	.276(7.00)	.315(8.00)	.413(10.50)	39	FFC05007-39SSB224W5M	.748(19.00)	.787(20.00)	.886(22.50)
16	FFC05007-16SSB224W5M	.295(7.50)	.335(8.50)	.433(11.00)	40	FFC05007-40SSB224W5M	.768(19.50)	.807(20.50)	.906(23.00)
17	FFC05007-17SSB224W5M	.315(8.00)	.354(9.00)	.453(11.50)	41	FFC05007-41SSB224W5M	.787(20.00)	.828(21.00)	.925(23.50)
18	FFC05007-18SSB224W5M	.335(8.50)	.374(9.50)	.472(12.00)	42	FFC05007-42SSB224W5M	.807(20.50)	.846(21.50)	.948(24.00)
19	FFC05007-19SSB224W5M	.354(9.00)	.394(10.00)	.492(12.50)	43	FFC05007-43SSB224W5M	.828(21.00)	.866(22.00)	.965(24.50)
20	FFC05007-20SSB224W5M	.374(9.50)	.413(10.50)	.512(13.00)	44	FFC05007-44SSB224W5M	.846(21.50)	.886(22.50)	.984(25.00)
21	FFC05007-21SSB224W5M	.394(10.00)	.433(11.00)	.531(13.50)	45	FFC05007-45SSB224W5M	.866(22.00)	.906(23.00)	1.004(25.50)
22	FFC05007-22SSB224W5M	.413(10.50)	.453(11.50)	.551(14.00)	46	FFC05007-46SSB224W5M	.886(22.50)	.925(23.50)	1.024(26.00)
23	FFC05007-23SSB224W5M	.433(11.00)	.472(12.00)	.571(14.50)	47	FFC05007-47SSB224W5M	.906(23.00)	.948(24.00)	1.043(26.50)
24	FFC05007-24SSB224W5M	.453(11.50)	.492(12.50)	.591(15.00)	48	FFC05007-48SSB224W5M	.925(23.50)	.965(24.50)	1.063(27.00)
25	FFC05007-25SSB224W5M	.472(12.00)	.512(13.00)	.610(15.50)	49	FFC05007-49SSB224W5M	.948(24.00)	.984(25.00)	1.083(27.50)
26	FFC05007-26SSB224W5M	.492(12.50)	.531(13.50)	.630(16.00)	50	FFC05007-50SSB224W5M	.965(24.50)	1.004(25.50)	1.102(28.00)
27	FFC05007-27SSB224W5M	.512(13.00)	.551(14.00)	.650(16.50)					

 THIRD ANGLE PROJECTION	GENERAL TOLERANCES (UNLESS SPECIFIED)		APPROVE BY FRANK	DATE 18/JUN/13	PART NO. FFC05007-XXSSB224W5M	ITEM NO. FFC05007	 Leader Of Industry	
	X.±.012(0.30)	X'.±5'	CHECKED BY JACOB	DATE 18/JUN/13	TITLE FFC/FFC connector 0.5mm Versa needle SMT	REV 1		SHEET NO. 4/5
	DESIGN UNITS Inch (metric)	X.XX±.008(0.20)	.X'±2'	DRAWN BY CHERRY	DATE 18/JUN/13	THIS DRAWING CONTAINS INFORMATION THAT IS PROPRIETARY TO TXGA INDUSTRIAL ELECTRONICS(S.Z)CO.,LTD AND SHOULD NOT BE USED WITHOUT WRITTEN PERMISSION		
	SCALE 5:1	SIZE A4	X.XX±.006(0.15)	.XX'±1'				

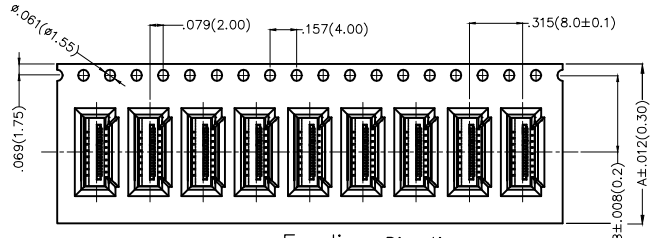
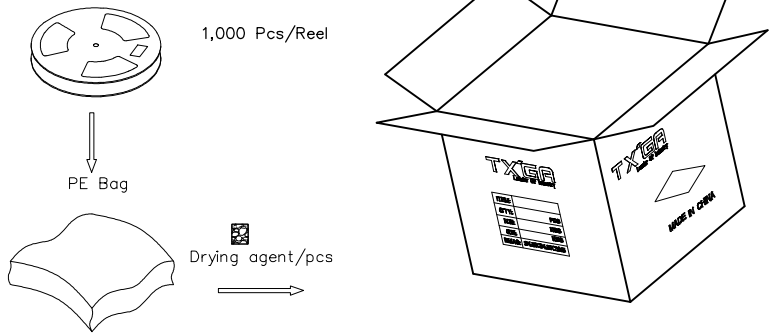
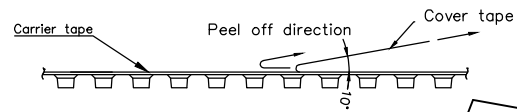
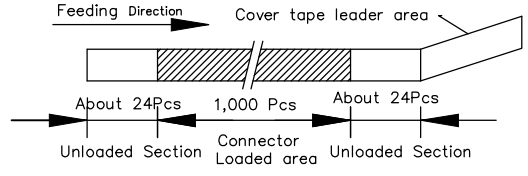
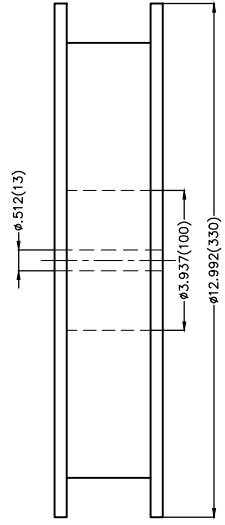
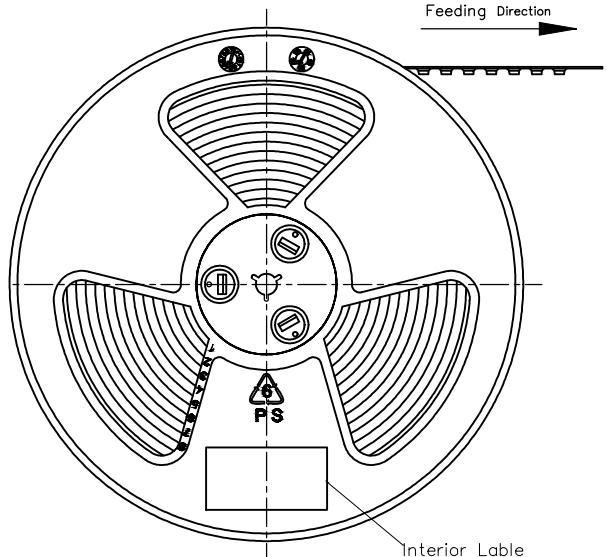
1 2 3 4 5 6 7 8

REV	LOCATIONS	DESCRIPTION	DATE	REVISER	APPD

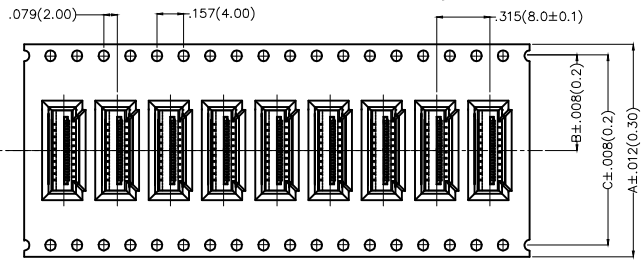
Note:

- 10 sprocket hole cumulative tolerance  $\pm 0.2$
- Carrier camber is within 1.0mm in 250mm
- Material: White Conductive polystyrene Alloy 100% recyclable
- All dimensions meet EIA-481-3 requirements
- Peel off force of cover tape & carrier tape: 20g~130g (0.2N~1.3N)
- Component load per 13" reel: 1,000 pcs

Circuits (n)	Dimensions (in/mm)		
	A	B	C
4~16	.945(24.0)	.453(11.50)	—
17~24	1.260(32.0)	.561(14.25)	1.122(28.50)
25~48	1.732(44.0)	.797(20.25)	1.594(40.50)
49~60	2.205(56.0)	1.033(26.25)	2.067(52.50)



Circuits: 4-16 Feeding Direction



Circuits: 17-60 Feeding Direction

 THIRD ANGLE PROJECTION	GENERAL TOLERANCES (UNLESS SPECIFIED)		APPROVE BY FRANK	DATE 18/JUN/13	PART NO. FFC05007-XXSSX224W5M	ITEM NO. FFC05007	 Leader Of Industry	
	X. $\pm$ .012(0.30)	X. $\pm$ 5'	CHECKED BY JACOB	DATE 18/JUN/13	TITLE FPC/FFC connector 0.5mm SMT			
DESIGN UNITS Inch (metric)	X.X $\pm$ .008(0.20)	.X $\pm$ 2'	DRAWN BY CHERRY	DATE 18/JUN/13	THIS DRAWING CONTAINS INFORMATION THAT IS PROPRIETARY TO TXGA INDUSTRIAL ELECTRONICS(S.Z)CO.,LTD AND SHOULD NOT BE USED WITHOUT WRITTEN PERMISSION		REV 1	SHEET NO. 5/5
SCALE 5:1	SIZE A4	X.XX $\pm$ .006(0.15)						
		X.XXX $\pm$ .004(0.10)						

## X-ON Electronics

Largest Supplier of Electrical and Electronic Components

*Click to view similar products for [FFC & FPC Connectors](#) category:*

*Click to view products by [TXGA](#) manufacturer:*

Other Similar products are found below :

[00-6200-227-022-800](#) [006205250500825+](#) [006205280500825+](#) [FPH-1602G](#) [FPH-2022G](#) [52610-1275](#) [501864-3091-TR225](#)  
[086222026001800](#) [52610-0675](#) [62674-201121DLF](#) [62684-36210E9ALF](#) [52746-1671-TR250](#) [10051922-2810EHLF](#) [686322124422](#) [XF3M-](#)  
[2915-1B-R100](#) [AYF353125A](#) [AYF530665TA](#) [AYF534065TA](#) [AYF351525](#) [086212040340800+](#) [AYF530365TA](#) [67000-004LF](#)  
[006207341915000+](#) [207356-1](#) [67000-003LF](#) [HFW14R-2STE9LF](#) [SFW12R-5STE9LF](#) [SFW18R-1STAE9LF](#) [SFW4R-5STE9LF](#) [52807-0430](#)  
[046283021002868+](#) [502250-8027](#) [104267-9617](#) [66987-011LF](#) [HFW8S-2STAE1HLF](#) [67000-008LF](#) [HFW22R-2STE1H1LF](#) [0781271110](#)  
[5019511030](#) [200528-0260](#) [5039084120](#) [503908-5120](#) [SFW20R-1STGE5LF](#) [FH12-18S-0.5SH](#) [686116183522](#) [FH64MA-11S-0.25SHW](#)  
[686114183522](#) [502078-5362](#) [FH52K-68S-0.5SH](#) [FH26W-23S-0.3SHW\(60\)](#)