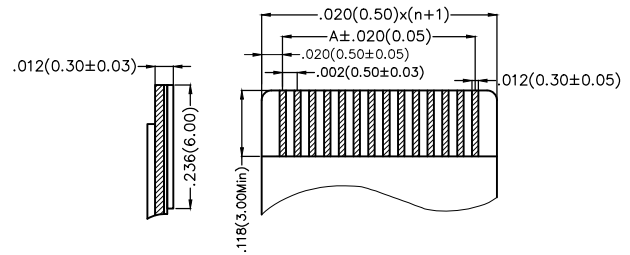
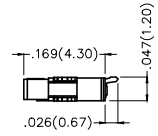
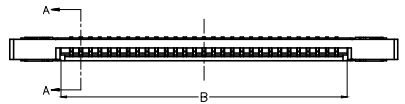
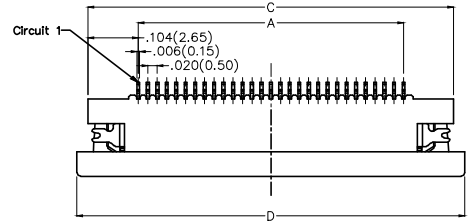


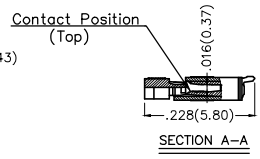
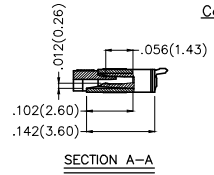
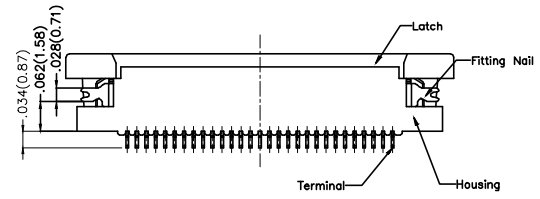
REV	LOCATIONS	DESCRIPTION	DATE	REVISED	APPD

SPECIFICATIONS

Electrical
 Current Rating: 0.5A AC(rms)/DC
 Voltage Rating: 50V AC(rms)/DC
 Contact Resistance: 20 m Ω Max
 Insulation Resistance: 500 M Ω MIN
 Withstanding Voltage: 200V AC r.m.s
 Temperature Range—Operating: -25°C~+85°C
 Material and Plating
 Housing: Heat Resistant Polymer UL 94V-0
 Actuator: Heat Resistant Polymer UL 94V-0
 Contact: Phosphor Bronze/ Tin Plated
 Stopper: Phosphor Bronze/ Tin Plated



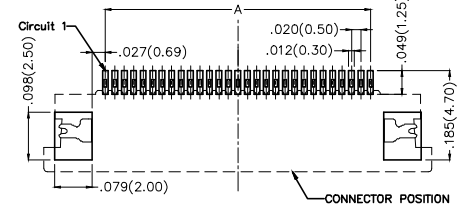
Applicable FFC
 Recommended Dimension



Ordering Information

FFC 050 08 — XX S B A 1 2 4 W5 M
 1 2 3 4 5 6 7 8 9 10 11 12

1 Category FFC-FPC	2 Series Number 050-Pitch 0.50mm	3 Distinction No. 08	4 Circuits XX	5 Assemble Layout S-SMT	6 Entry Angle B- 90° Angle
7 Contact Position A-Top	8 ZIF 1-ZIF	9 Plating 2-Tin Plated	10 Material-Resin 4-LCP	11 Color-Resin W5-Housing: Natural, Actuator: Black	12 Packaging M-Reel



Recommended P.C.Board Layout

THIRD ANGLE PROJECTION	GENERAL TOLERANCES (UNLESS SPECIFIED)		APPROVE BY FRANK	DATE 18/JUN/13	PART NO. FFC05008-XXSBA124W5M	ITEM NO. FFC05008	 Leader Of Industry
	DESIGN UNITS Inch (metric)	X.±.012(0.30) X.X±.008(0.20)	X.±5' .X±2'	CHECKED BY JACOB	DATE 18/JUN/13	TITLE FPC/FFC connector 0.5mm Top contact SMT	
SCALE 5:1	SIZE A4	X.XX±.006(0.15) X.XXX±.004(0.10)	.XX±1' .XXX±0.5'	DRAWN BY CHERRY	DATE 18/JUN/13	THIS DRAWING CONTAINS INFORMATION THAT IS PROPRIETARY TO TXGA INDUSTRIAL ELECTRONICS(S.Z)CO.,LTD AND SHOULD NOT BE USED WITHOUT WRITTEN PERMISSION	

1 2 3 4 5 6 7 8

REV	LOCATIONS	DESCRIPTION	DATE	REVSER	APPD

Circuits (n)	Part No.	Dimensions(in/mm)			
		A	B	C	D
4	FFC05008-04SBA124W5M	.059(1.50)	.102(2.60)	.264(6.70)	.315(8.00)
6	FFC05008-06SBA124W5M	.098(2.50)	.142(3.60)	.303(7.70)	.354(9.00)
8	FFC05008-08SBA124W5M	.138(3.50)	.171(4.60)	.343(8.70)	.394(10.00)
9	FFC05008-09SBA124W5M	.157(4.00)	.201(5.10)	.362(9.20)	.413(10.50)
10	FFC05008-10SBA124W5M	.177(4.50)	.221(5.60)	.382(9.70)	.433(11.00)
12	FFC05008-12SBA124W5M	.217(5.50)	.260(6.60)	.421(10.70)	.472(12.00)
13	FFC05008-13SBA124W5M	.236(6.00)	.280(7.10)	.441(11.20)	.492(12.50)
16	FFC05008-16SBA124W5M	.295(7.50)	.339(8.60)	.501(12.70)	.551(14.00)
17	FFC05008-17SBA124W5M	.315(8.00)	.359(9.10)	.520(13.20)	.571(14.50)
20	FFC05008-20SBA124W5M	.374(9.50)	.417(10.60)	.579(14.70)	.630(16.00)
22	FFC05008-22SBA124W5M	.413(10.50)	.457(11.60)	.618(15.70)	.689(17.00)
24	FFC05008-24SBA124W5M	.453(11.50)	.496(12.60)	.658(16.70)	.709(18.00)
25	FFC05008-25SBA124W5M	.472(12.00)	.516(13.10)	.677(17.20)	.728(18.50)
26	FFC05008-26SBA124W5M	.492(12.50)	.535(13.60)	.697(17.70)	.748(19.00)
30	FFC05008-30SBA124W5M	.571(14.50)	.614(15.60)	.777(19.70)	.828(21.00)
33	FFC05008-33SBA124W5M	.630(16.00)	.673(17.10)	.836(21.20)	.886(22.50)
34	FFC05008-34SBA124W5M	.650(16.50)	.693(17.60)	.854(21.70)	.906(23.00)
36	FFC05008-36SBA124W5M	.689(17.50)	.732(18.60)	.894(22.70)	.948(24.00)
40	FFC05008-40SBA124W5M	.768(19.50)	.811(20.60)	.972(24.70)	1.024(26.00)
45	FFC05008-45SBA124W5M	.866(22.00)	.910(23.10)	1.071(27.20)	1.122(28.50)
50	FFC05008-50SBA124W5M	.965(24.50)	1.008(25.60)	1.150(29.70)	1.220(31.00)
52	FFC05008-52SBA124W5M	1.004(25.50)	1.047(26.60)	1.209(30.70)	1.260(32.00)
54	FFC05008-54SBA124W5M	1.043(26.50)	1.087(27.60)	1.248(31.70)	1.299(33.00)
60	FFC05008-60SBA124W5M	1.161(29.50)	1.205(30.60)	1.366(34.70)	1.417(36.00)

A

B

C

D

E

F

A



B

C

D

E

F

 THIRD ANGLE PROJECTION	GENERAL TOLERANCES (UNLESS SPECIFIED)		APPROVE BY FRANK	DATE 18/JUN/13	PART NO. FFC05008-XXSBA124W5M	ITEM NO. FFC05008	 Leader Of Industry	
	X.±.012(0.30)	X.±5'	CHECKED BY JACOB	DATE 18/JUN/13	TITLE FFC/FFC connector 0.5mm Top contact SMT	REV 0		SHEET NO. 2/5
	DESIGN UNITS Inch (metric)	X.X±.008(0.20)	.X'±2'	DRAWN BY CHERRY	DATE 18/JUN/13	THIS DRAWING CONTAINS INFORMATION THAT IS PROPRIETARY TO TXGA INDUSTRIAL ELECTRONICS(S.Z)CO.,LTD AND SHOULD NOT BE USED WITHOUT WRITTEN PERMISSION		
	SCALE 5:1	SIZE A4	X.XX±.006(0.15)	.XX'±1'	X.XXX±.004(0.10)	.XXX'±0.5'		

1 2 3 4 5 6 7 8

REV	LOCATIONS	DESCRIPTION	DATE	REVSER	APPD

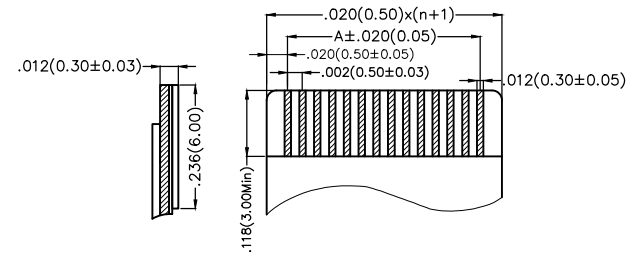
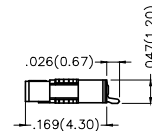
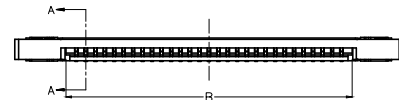
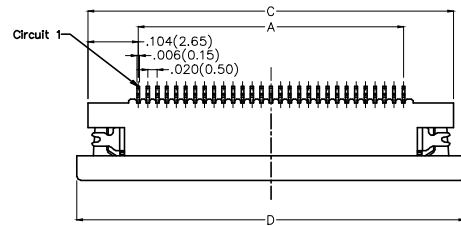
SPECIFICATIONS

Electrical

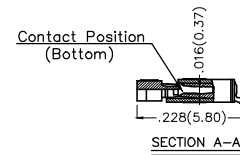
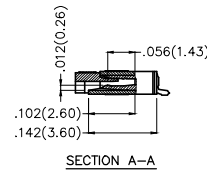
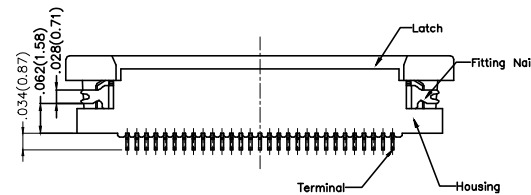
Current Rating: 0.5A AC(rms)/DC
Voltage Rating: 50V AC(rms)/DC
Contact Resistance: 20 mΩ Max
Insulation Resistance: 500 MΩ MIN
Withstanding Voltage: 200V AC r.m.s
Temperature Range—Operating: -25°C~+85°C

Material and Plating

Housing: Heat Resistant Polymer UL 94V-0
Actuator: Heat Resistant Polymer UL 94V-0
Contact: Phosphor Bronze/ Tin Plated
Stopper: Phosphor Bronze/ Tin Plated



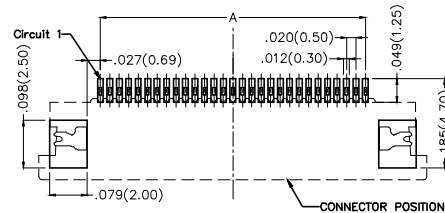
Applicable FFC
Recommended Dimension




Ordering Information

FFC 050 08 — XX S B B 1 2 4 W5 M
1 2 3 4 5 6 7 8 9 10 11 12

1	Category FFC-FPC	2	Series Number 050-Pitch 0.50mm	3	Distinction No. 08	4	Circuits XX	5	Assemble Layout S-SMT	6	Entry Angle B- 90° Angle
7	Contact Position B-Bottom	8	ZIF 1-ZIF	9	Plating 2-Tin Plated	10	Material-Resin 4-LCP	11	Color-Resin W5-Housing: Natural, Actuator: Black	12	Packaging M-Reel





Recommended P.C.Board Layout

THIRD ANGLE PROJECTION	GENERAL TOLERANCES (UNLESS SPECIFIED)		APPROVE BY FRANK	DATE 18/JUN/13	PART NO. FFC05008-XXSBB124W5M	ITEM NO. FFC05008	 Leader Of Industry
	DESIGN UNITS Inch (metric)	X.±.012(0.30) X.X±.008(0.20) X.XX±.006(0.15) X.XXX±.004(0.10)	X.±5' .X'±2' .XX±1' .XXX±0.5'	CHECKED BY JACOB	DATE 18/JUN/13	TITLE FPC/FFC connector 0.5mm Bottom contact SMT	
SCALE 5:1	SIZE A4	DRAWN BY CHERRY		DATE 18/JUN/13	THIS DRAWING CONTAINS INFORMATION THAT IS PROPRIETARY TO TXGA INDUSTRIAL ELECTRONICS(S.Z)CO.,LTD AND SHOULD NOT BE USED WITHOUT WRITTEN PERMISSION		

1 2 3 4 5 6 7 8

REV	LOCATIONS	DESCRIPTION	DATE	REVSER	APPD

Circuits (n)	Part No.	Dimensions(in/mm)			
		A	B	C	D
4	FFC05008-04SBB124W5M	.059(1.50)	.102(2.60)	.264(6.70)	.315(8.00)
6	FFC05008-06SBB124W5M	.098(2.50)	.142(3.60)	.303(7.70)	.354(9.00)
8	FFC05008-08SBB124W5M	.138(3.50)	.171(4.60)	.343(8.70)	.394(10.00)
9	FFC05008-09SBB124W5M	.157(4.00)	.201(5.10)	.362(9.20)	.413(10.50)
10	FFC05008-10SBB124W5M	.177(4.50)	.221(5.60)	.382(9.70)	.433(11.00)
12	FFC05008-12SBB124W5M	.217(5.50)	.260(6.60)	.421(10.70)	.472(12.00)
13	FFC05008-13SBB124W5M	.236(6.00)	.280(7.10)	.441(11.20)	.492(12.50)
16	FFC05008-16SBB124W5M	.295(7.50)	.339(8.60)	.501(12.70)	.551(14.00)
17	FFC05008-17SBB124W5M	.315(8.00)	.359(9.10)	.520(13.20)	.571(14.50)
20	FFC05008-20SBB124W5M	.374(9.50)	.417(10.60)	.579(14.70)	.630(16.00)
22	FFC05008-22SBB124W5M	.413(10.50)	.457(11.60)	.618(15.70)	.689(17.00)
24	FFC05008-24SBB124W5M	.453(11.50)	.496(12.60)	.658(16.70)	.709(18.00)
25	FFC05008-25SBB124W5M	.472(12.00)	.516(13.10)	.677(17.20)	.728(18.50)
26	FFC05008-26SBB124W5M	.492(12.50)	.535(13.60)	.697(17.70)	.748(19.00)
30	FFC05008-30SBB124W5M	.571(14.50)	.614(15.60)	.777(19.70)	.828(21.00)
33	FFC05008-33SBB124W5M	.630(16.00)	.673(17.10)	.836(21.20)	.886(22.50)
34	FFC05008-34SBB124W5M	.650(16.50)	.693(17.60)	.854(21.70)	.906(23.00)
36	FFC05008-36SBB124W5M	.689(17.50)	.732(18.60)	.894(22.70)	.948(24.00)
40	FFC05008-40SBB124W5M	.768(19.50)	.811(20.60)	.972(24.70)	1.024(26.00)
45	FFC05008-45SBB124W5M	.866(22.00)	.910(23.10)	1.071(27.20)	1.122(28.50)
50	FFC05008-50SBB124W5M	.965(24.50)	1.008(25.60)	1.150(29.70)	1.220(31.00)
52	FFC05008-52SBB124W5M	1.004(25.50)	1.047(26.60)	1.209(30.70)	1.260(32.00)
54	FFC05008-54SBB124W5M	1.043(26.50)	1.087(27.60)	1.248(31.70)	1.299(33.00)
60	FFC05008-60SBB124W5M	1.161(29.50)	1.205(30.60)	1.366(34.70)	1.417(36.00)

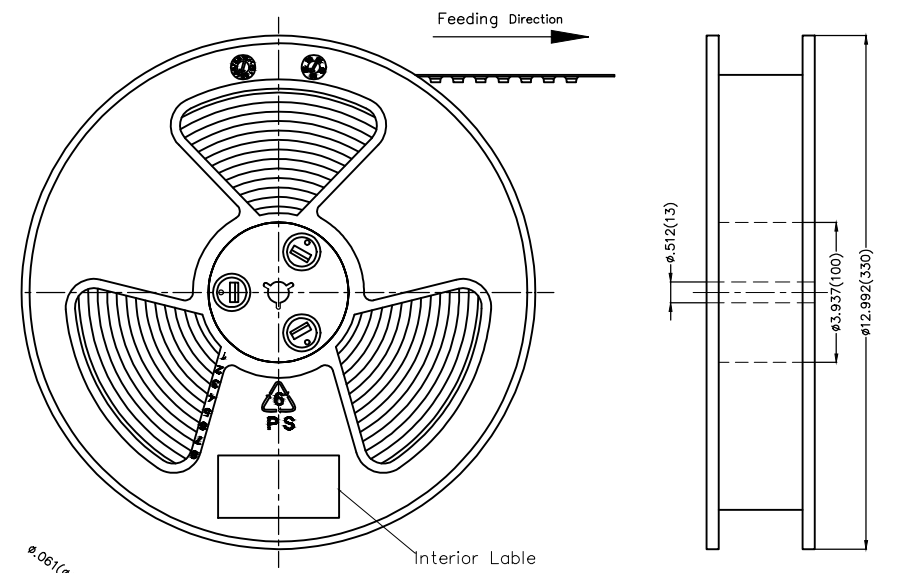
 THIRD ANGLE PROJECTION	GENERAL TOLERANCES (UNLESS SPECIFIED)		APPROVE BY FRANK	DATE 18/JUN/13	PART NO. FFC05008-XXSBB124W5M	ITEM NO. FFC05008	 Leader Of Industry	
	X.±.012(0.30)	X'.±5'	CHECKED BY JACOB	DATE 18/JUN/13	TITLE FFC/FFC connector 0.5mm Bottom contact SMT			REV 0
	DESIGN UNITS Inch (metric)	X.XX±.008(0.20)	.X'±2'	DRAWN BY CHERRY	DATE 18/JUN/13	THIS DRAWING CONTAINS INFORMATION THAT IS PROPRIETARY TO TXGA INDUSTRIAL ELECTRONICS(S.Z)CO.,LTD AND SHOULD NOT BE USED WITHOUT WRITTEN PERMISSION		
	SCALE 5:1	SIZE A4	X.XX±.006(0.15)	.XX'±1'	X.XXX±.004(0.10)	.XXX'±0.5'		

1 2 3 4 5 6 7 8

1 2 3 4 5 6 7 8

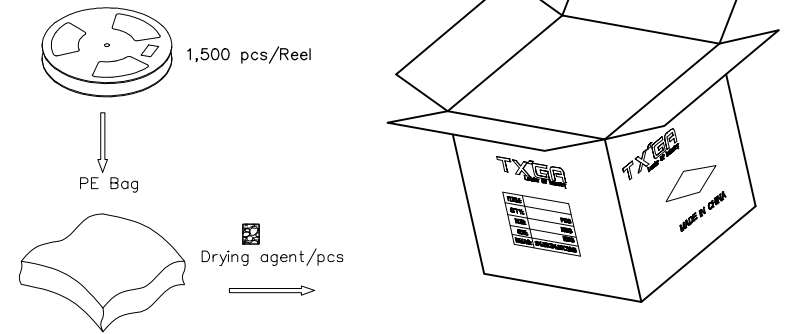
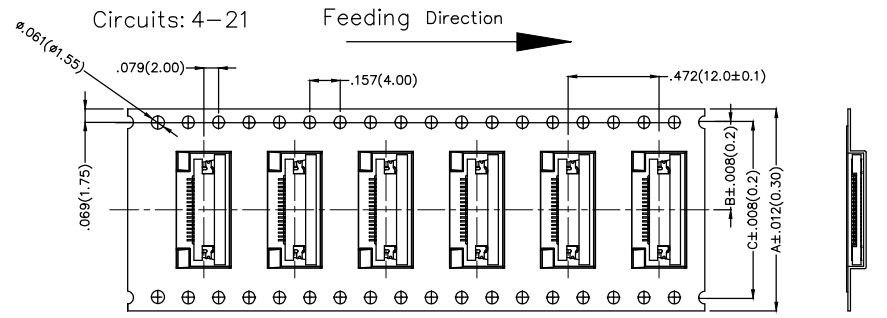
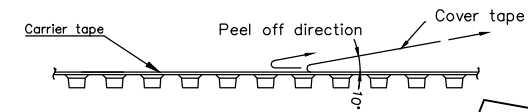
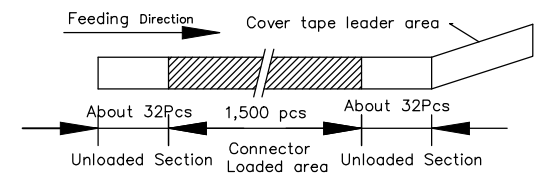
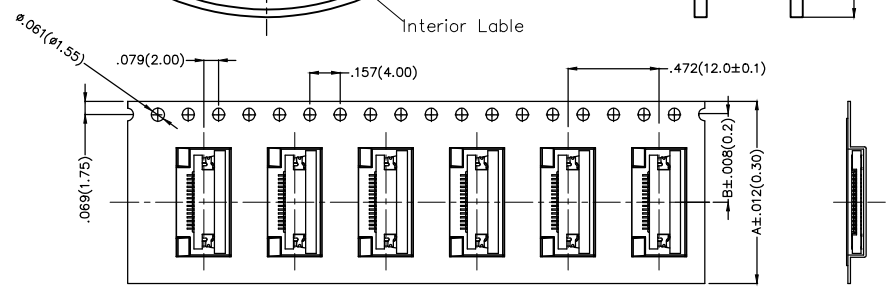
REV	LOCATIONS	DESCRIPTION	DATE	REVISER	APPD

A
B
C
D
E
F



- Note:
1. 10 sprocket hole cumulative tolerance ± 0.2
 2. Carrier camber is within 1.0mm in 250mm
 3. Material: White Conductive polystyrene Alloy 100% recyclable
 4. All dimensions meet EIA-481-3 requirements
 5. Peel off force of cover tape & carrier tape: 20g~130g(0.2N~1.3N)
 6. Component load per 13" reel: 1,500 pcs

Circuits (n)	Dimensions(in/mm)		
	A	B	C
4	.630(16.0)	.295(7.5)	—
6~20	.945(24.0)	.453(11.5)	—
22~30	1.260(32.0)	.561(14.25)	1.033(28.50)
33~50	1.732(44.0)	.797(20.25)	1.594(40.50)
52~60	2.205(56.0)	1.033(26.25)	2.067(52.50)



 THIRD ANGLE PROJECTION DESIGN UNITS Inch (metric) SCALE 5:1 SIZE A4	GENERAL TOLERANCES (UNLESS SPECIFIED)		APPROVE BY FRANK	DATE 18/JUN/13	PART NO. FFC05008-XXSBX124W5M	ITEM NO. FFC05008	 Leader Of Industry
	X.±.012(0.30)	X.±5'	CHECKED BY JACOB	DATE 18/JUN/13	TITLE FPC/FFC connector 0.5mm SMT		
	X.X±.008(0.20)	.X±2'	DRAWN BY CHERRY	DATE 18/JUN/13	THIS DRAWING CONTAINS INFORMATION THAT IS PROPRIETARY TO TXGA INDUSTRIAL ELECTRONICS(S.Z)CO.,LTD AND SHOULD NOT BE USED WITHOUT WRITTEN PERMISSION		SHEET NO. 5/5
	X.XX±.006(0.15)	.XX±1'					
	X.XXX±.004(0.10)	.XXX±0.5'					

1 2 3 4 5 6 7 8

X-ON Electronics

Largest Supplier of Electrical and Electronic Components

Click to view similar products for [FFC & FPC Connectors](#) category:

Click to view products by [TXGA](#) manufacturer:

Other Similar products are found below :

[00-6200-227-022-800](#) [006205250500825+](#) [006205280500825+](#) [FPH-1602G](#) [FPH-2022G](#) [52610-1275](#) [501864-3091-TR225](#)
[086222026001800](#) [52610-0675](#) [62674-201121DLF](#) [62684-36210E9ALF](#) [52746-1671-TR250](#) [10051922-2810EHLF](#) [686322124422](#) [XF3M-](#)
[2915-1B-R100](#) [AYF353125A](#) [AYF530665TA](#) [AYF534065TA](#) [AYF351525](#) [086212040340800+](#) [AYF530365TA](#) [67000-004LF](#)
[006207341915000+](#) [207356-1](#) [67000-003LF](#) [HFW14R-2STE9LF](#) [SFW12R-5STE9LF](#) [SFW18R-1STAE9LF](#) [SFW4R-5STE9LF](#) [52807-0430](#)
[046283021002868+](#) [502250-8027](#) [104267-9617](#) [66987-011LF](#) [HFW8S-2STAE1HLF](#) [67000-008LF](#) [HFW22R-2STE1H1LF](#) [0781271110](#)
[5019511030](#) [200528-0260](#) [5039084120](#) [503908-5120](#) [SFW20R-1STGE5LF](#) [FH12-18S-0.5SH](#) [686116183522](#) [FH64MA-11S-0.25SHW](#)
[686114183522](#) [502078-5362](#) [FH52K-68S-0.5SH](#) [FH26W-23S-0.3SHW\(60\)](#)