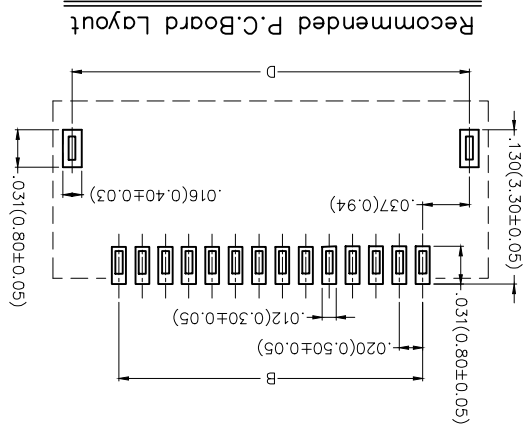
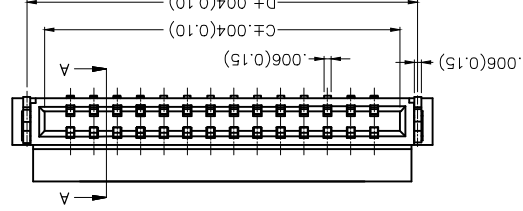
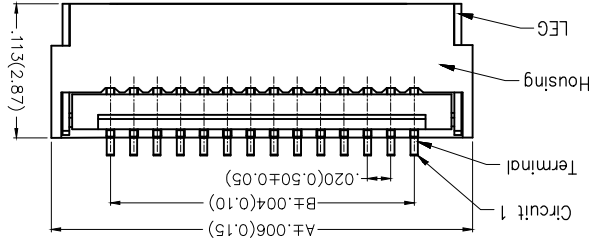
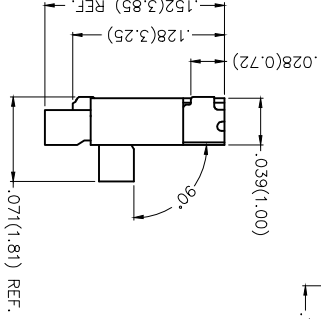
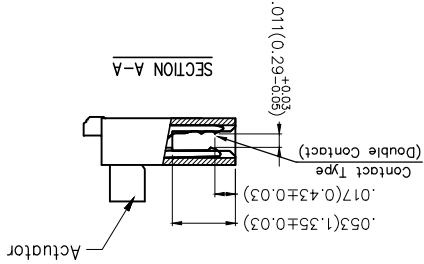
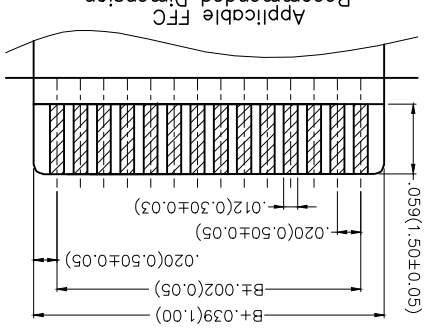


REV	LOCATIONS	DESCRIPTION	DATE	REVISER	APPD

**ELECTRICAL SPECIFICATIONS**

Current Rating: 0.5A AC(rms)/DC  
Voltage Rating: 25V AC(rms)/DC  
Contact Resistance: 50 mΩ Max  
Insulation Resistance: 500 MΩ MIN  
Withstanding Voltage: 200V AC r.m.s  
Temperature Range—Operating: -25°C~+85°C  
Material And Plating  
Housing: Thermoplastic UL94V-0/Natural  
Actuator: Thermoplastic UL94V-0/Black  
Contact: Copper Alloy/Gold plated/Gold in contact  
LEG: Copper Alloy/Tin plated  
area, matte tin on tail

**SPECIFICATIONS**



1	Category	1 FFC-FPC	2	Series Number	050-Pitch:0.50mm	3	Distinction No.	4	Circuits	XX	5	Assemble Layout	6	Entry Angle	B- 90° Angle	
7	Contact Type	D-Double Contact	8	ZIF	1-ZIF	9	Plating	1-Gold plated 3-Gold in contact area, matte tin on tail	10	Material-Resin	3-LCP	11	Color-Resin	W5-Housing:Natural, Actuator:Black	12	M-Reel Packaging

**Ordering Information**

Thickness .012(0.30±0.03)  
Applicable FFC  
Recommended Dimension

GENERAL TOLERANCES (UNLESS SPECIFIED)	APPROVE BY	FRANK	DATE	18/JUN/13	PART NO.	FFC05035-XXSBD1X3W5M	ITEM NO.	FFC05035
THIRD ANGLE PROJECTION	CHECKED BY	CHERRY	DATE	18/JUN/13	TITLE	FPC/FCC connector 0.5mm Double contact SMT	REV 0	SHEET NO. 1/3
DESIGN UNITS Inch (metric)	SCALE	X.X±.008(0.20)	SIZE	X.X±.1	DRAWN BY	KATE	DATE	18/JUN/13
SCALE	SIZE	X.XX±.004(0.10)		X.XX±0.5				

**TXGA**  
Leader Of Industry

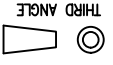
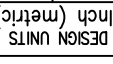
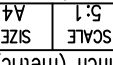
THIS DRAWING CONTAINS INFORMATION THAT IS PROPRIETARY TO TXGA INDUSTRIAL ELECTRONICS(Z)CO.,LTD AND SHOULD NOT BE USED WITHOUT WRITTEN PERMISSION

REV	LOCATIONS	DESCRIPTION	DATE	REVISER	APPD

Circuits (n)	Part No.	Dimensions(in/mm)		
		A	B	C
4	FFC05035-04SBD13W5M	.157(4.00)	.059(1.50)	.102(2.60)
6	FFC05035-06SBD13W5M	.197(5.00)	.098(2.50)	.142(3.60)
8	FFC05035-08SBD13W5M	.236(6.00)	.138(3.50)	.181(4.60)
10	FFC05035-10SBD13W5M	.276(7.00)	.177(4.50)	.220(5.60)
12	FFC05035-12SBD13W5M	.315(8.00)	.217(5.50)	.260(6.60)
14	FFC05035-14SBD13W5M	.354(9.00)	.256(6.50)	.299(7.60)
15	FFC05035-15SBD13W5M	.374(9.50)	.276(7.00)	.319(8.10)
16	FFC05035-16SBD13W5M	.394(10.00)	.295(7.50)	.339(8.60)
18	FFC05035-18SBD13W5M	.433(11.00)	.335(8.50)	.378(9.60)
20	FFC05035-20SBD13W5M	.472(12.00)	.374(9.50)	.417(10.60)
24	FFC05035-24SBD13W5M	.551(14.00)	.453(11.50)	.496(12.60)
26	FFC05035-26SBD13W5M	.591(15.00)	.492(12.50)	.535(13.60)
30	FFC05035-30SBD13W5M	.669(17.00)	.571(14.50)	.614(15.60)
34	FFC05035-34SBD13W5M	.748(19.00)	.650(16.50)	.693(17.60)
40	FFC05035-40SBD13W5M	.866(22.00)	.768(19.50)	.811(20.60)

Note: Gold in contact area, matte tin on tail

Circuits (n)	Part No.	Dimensions(in/mm)		
		A	B	C
4	FFC05035-04SBD13W5M	.157(4.00)	.059(1.50)	.102(2.60)
6	FFC05035-06SBD13W5M	.197(5.00)	.098(2.50)	.142(3.60)
8	FFC05035-08SBD13W5M	.236(6.00)	.138(3.50)	.181(4.60)
10	FFC05035-10SBD13W5M	.276(7.00)	.177(4.50)	.220(5.60)
12	FFC05035-12SBD13W5M	.315(8.00)	.217(5.50)	.260(6.60)
14	FFC05035-14SBD13W5M	.354(9.00)	.256(6.50)	.299(7.60)
15	FFC05035-15SBD13W5M	.374(9.50)	.276(7.00)	.319(8.10)
16	FFC05035-16SBD13W5M	.394(10.00)	.295(7.50)	.339(8.60)
18	FFC05035-18SBD13W5M	.433(11.00)	.335(8.50)	.378(9.60)
20	FFC05035-20SBD13W5M	.472(12.00)	.374(9.50)	.417(10.60)
24	FFC05035-24SBD13W5M	.551(14.00)	.453(11.50)	.496(12.60)
26	FFC05035-26SBD13W5M	.591(15.00)	.492(12.50)	.535(13.60)
30	FFC05035-30SBD13W5M	.669(17.00)	.571(14.50)	.614(15.60)
34	FFC05035-34SBD13W5M	.748(19.00)	.650(16.50)	.693(17.60)
40	FFC05035-40SBD13W5M	.866(22.00)	.768(19.50)	.811(20.60)

 THIRD ANGLE PROJECTION	X.XX±.012(0.30)	X.XX±.008(0.20)	X.XX±.006(0.15)	X.XX±.004(0.10)
	X.XX±.012(0.30)	X.XX±.008(0.20)	X.XX±.006(0.15)	X.XX±.004(0.10)
 SCALE SIZE	A4	A4	A4	A4
 DESIGN UNITS	Inch (metric)	Inch (metric)	Inch (metric)	Inch (metric)
GENERAL TOLERANCES (UNLESS SPECIFIED)	FRANK	CHECKED BY	DATE	18/JUN/13
APPROVE BY	FRANK	CHECKED BY	DATE	18/JUN/13
DRAWN BY	CHEERRY	DATE	18/JUN/13	
KATE	DATE	18/JUN/13		
THIS DRAWING CONTAINS INFORMATION THAT IS PROPRIETARY TO TXGA INDUSTRIAL ELECTRONICS(SZ)CO.,LTD AND SHOULD NOT BE USED WITHOUT WRITTEN PERMISSION				

 Leader Of Industry	PART NO. FFC05035-XXSBD13W5M TITLE FFC/FCC connector 0.5mm Double contact SMT REV 0 SHEET NO. 2/3
---	---

1 2 3 4 5 6 7 8

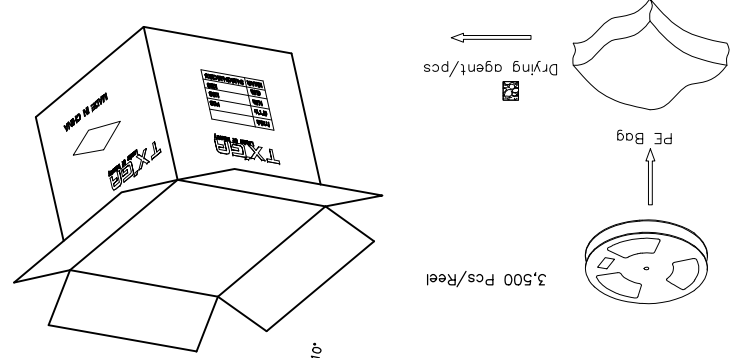
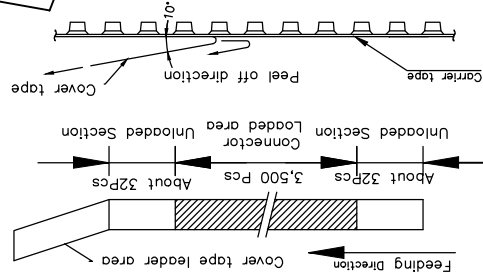
A B C D E F

REV	LOCATIONS	DESCRIPTION	DATE	REVISER	APPD

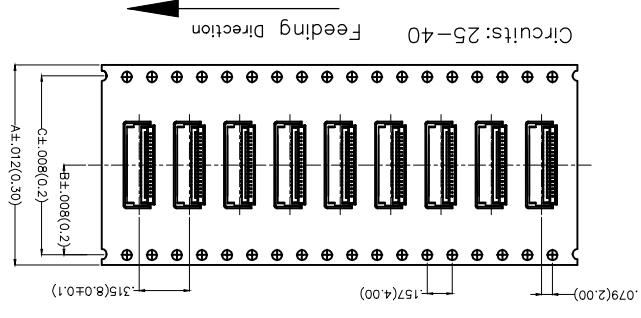
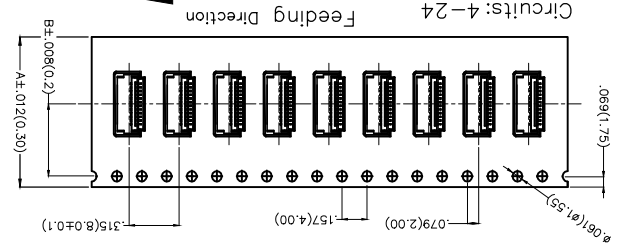
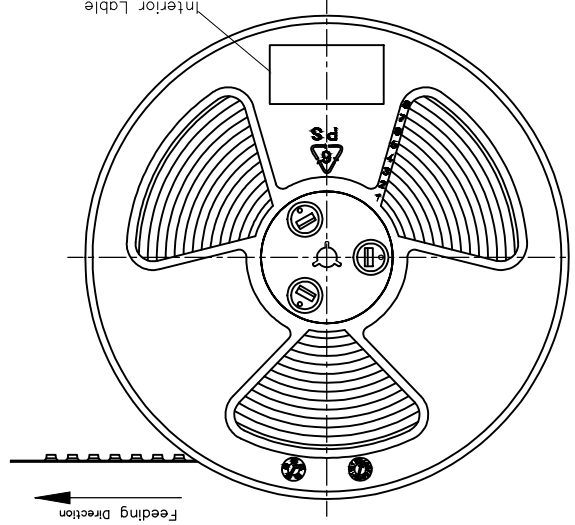
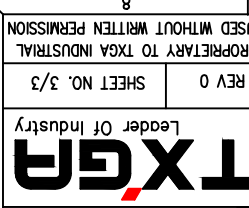
Note:

1. 10 sprocket hole cumulative tolerance±0.2
2. Carrier comb is within 1.0mm in 250mm
3. Material: White Conductive polystyrene Alloy 100% recyclable
4. All dimensions meet EIA-481-3 requirements
5. Peel off force of cover tape&carrier tape: 20g~130g(0.2N~1.3N)
6. Component load per 13" reel: 3,500 pcs
7. Minimum Order Quantity:
8. Gold in contact area, matte tin on tail: 3,500 pcs

Circuits	(n)		
	A	B	C
4~8	630(16.0)	295(7.50)	—
9~24	.945(24.0)	.453(11.50)	—
25~36	1.260(32.0)	.561(14.25)	1.122(28.50)
37~40	1.732(44.0)	.797(20.25)	1.594(40.50)



THIRD ANGLE		DESIGN UNITS		SCALE	
	(UNLESS SPECIFIED)	X.±.012(0.30)	X.±.008(0.20)	5:1	A4
APPROVE BY	DATE	CHECKED BY	DATE	DRAWN BY	DATE
FRANK	18/JUN/13	JACOB	18/JUN/13	CHEERRY	18/JUN/13
GENERAL TOLERANCES	PART NO.	FFC05035-XXSBD1X3WM	FFC05035	ITEM NO.	
THIS DRAWING CONTAINS INFORMATION THAT IS PROPRIETARY TO TXGA INDUSTRIAL ELECTRONICS(SZ)CO.,LTD AND SHOULD NOT BE USED WITHOUT WRITTEN PERMISSION					



## X-ON Electronics

Largest Supplier of Electrical and Electronic Components

*Click to view similar products for [FFC & FPC Connectors](#) category:*

*Click to view products by [TXGA](#) manufacturer:*

Other Similar products are found below :

[HFW11R-1STE1H1LF](#) [FH29B-100S-0.2SHW\(99\)](#) [FA5S008HP1](#) [FH29B-120S-0.2SHW\(99\)](#) [FH29B-80S-0.2SHW\(99\)](#) [FHS-16](#) [FPH-2022G](#)  
[52610-1075](#) [52610-1275](#) [52610-1934](#) [XF3M\(1\)-1415-1B-R100](#) [501864-3091-TR225](#) [0525594033](#) [086210010340800](#) [086222026001800](#)  
[52271-2869-CUT-TAPE](#) [62674-201121DLF](#) [62684-36210E9ALF](#) [52610-1675](#) [52746-1671-TR250](#) [10051922-2810EHLF](#) [6-520415-9](#)  
[BD021-09A-A1-0350-0200-0550-LD](#) [SFV6R-1STE9HLF](#) [XF3M-2915-1B-R100](#) [1658549-1](#) [62674-221121ALF](#) [46214008010800](#)  
[046298003000883](#) [151660622](#) [842-816-2630-035](#) [AYF530665TA](#) [AYF351525](#) [046296011930846+](#) [AYF352325A](#) [046254020000800+](#)  
[FH19C-13S-0.5SH\(99\)](#) [FH39J-51S-0.3SHW\(99\)](#) [AYF355125A](#) [AYF530365TA](#) [FH29B-44S-0.2SHW\(99\)](#) [SFW5R-2STAE9LF](#) [AYF351125A](#)  
[AYF350725A](#) [62684-502100AHLF](#) [FH39-61S-0.3SHW\(99\)](#) [AYF414035A](#) [10064555-172520HLF](#) [AYF212335A](#) [504754-2500](#)