



APPD	REVISER	DATE	DESCRIPTION	LOCATIONS	REV
------	---------	------	-------------	-----------	-----

Note: Contact Tin-Plated

Circuits (n)	Part No.	Dimensions(in/mm)			
		A	B	C	D
4	FFC10003-04SBB124W5M	.118(3.00)	.200(5.10)	.350(8.90)	.327(8.30)
5	FFC10003-05SBB124W5M	.157(4.00)	.240(6.10)	.390(9.90)	.327(9.30)
6	FFC10003-06SBB124W5M	.197(5.00)	.280(7.10)	.492(10.90)	.406(10.30)
7	FFC10003-07SBB124W5M	.236(6.00)	.319(8.10)	.469(11.90)	.445(11.30)
8	FFC10003-08SBB124W5M	.276(7.00)	.358(9.10)	.508(12.90)	.484(12.30)
10	FFC10003-10SBB124W5M	.354(9.00)	.437(11.10)	.587(14.90)	.563(14.30)
11	FFC10003-11SBB124W5M	.394(10.00)	.476(12.10)	.626(15.90)	.602(15.30)
12	FFC10003-12SBB124W5M	.433(11.00)	.516(13.10)	.665(16.90)	.642(16.30)
16	FFC10003-16SBB124W5M	.591(15.00)	.673(17.10)	.823(20.90)	.799(20.30)
17	FFC10003-17SBB124W5M	.630(16.00)	.712(18.10)	.862(21.90)	.839(21.30)
22	FFC10003-22SBB124W5M	.827(21.00)	.909(23.10)	1.059(26.90)	1.035(26.30)
27	FFC10003-27SBB124W5M	1.024(27.00)	1.146(29.10)	1.295(32.90)	1.272(32.30)

Note: Contact Gold Flash

Circuits (n)	Part No.	Dimensions(in/mm)			
		A	B	C	D
4	FFC10003-04SBB114W5M	.118(3.00)	.200(5.10)	.350(8.90)	.327(8.30)
5	FFC10003-05SBB114W5M	.157(4.00)	.240(6.10)	.390(9.90)	.327(9.30)
6	FFC10003-06SBB114W5M	.197(5.00)	.280(7.10)	.492(10.90)	.406(10.30)
7	FFC10003-07SBB114W5M	.236(6.00)	.319(8.10)	.469(11.90)	.445(11.30)
8	FFC10003-08SBB114W5M	.276(7.00)	.358(9.10)	.508(12.90)	.484(12.30)
10	FFC10003-10SBB114W5M	.354(9.00)	.437(11.10)	.587(14.90)	.563(14.30)
11	FFC10003-11SBB114W5M	.394(10.00)	.476(12.10)	.626(15.90)	.602(15.30)
12	FFC10003-12SBB114W5M	.433(11.00)	.516(13.10)	.665(16.90)	.642(16.30)
16	FFC10003-16SBB114W5M	.591(15.00)	.673(17.10)	.823(20.90)	.799(20.30)
17	FFC10003-17SBB114W5M	.630(16.00)	.712(18.10)	.862(21.90)	.839(21.30)
22	FFC10003-22SBB114W5M	.827(21.00)	.909(23.10)	1.059(26.90)	1.035(26.30)
27	FFC10003-27SBB114W5M	1.024(27.00)	1.146(29.10)	1.295(32.90)	1.272(32.30)

SCALE		5:1	A4	
DESIGN UNITS	Inch (metric)	X.XX±.008(0.20)	X.XX±.006(0.15)	X.XX±.004(0.10)
	PROJECTION	X.±.012(0.30)	X.±.01	X.XX±.05
THIRD ANGLE		(UNLESS SPECIFIED)		
APPROVE BY	FRANK	DATE	18/JUN/13	PART NO.
CHECKED BY	JACOB	DATE	18/JUN/13	TITLE
DRAWN BY	CHERRY	DATE	18/JUN/13	FPC/FCC Connector 1.00mm Positive Needle DIP
GENERAL TOLERANCES				
THIS DRAWING CONTAINS INFORMATION THAT IS PROPRIETARY TO TXGA INDUSTRIAL ELECTRONICS(SZ)CO.,LTD AND SHOULD NOT BE USED WITHOUT WRITTEN PERMISSION				



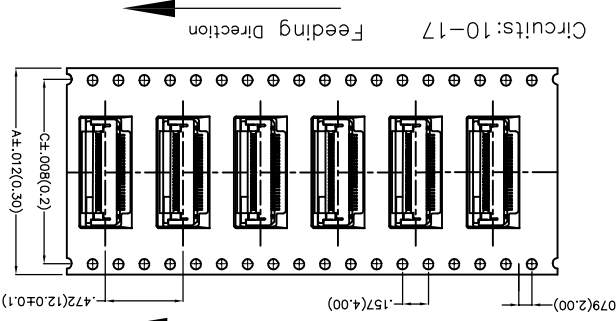
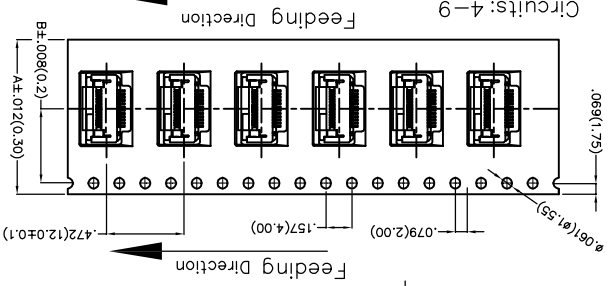
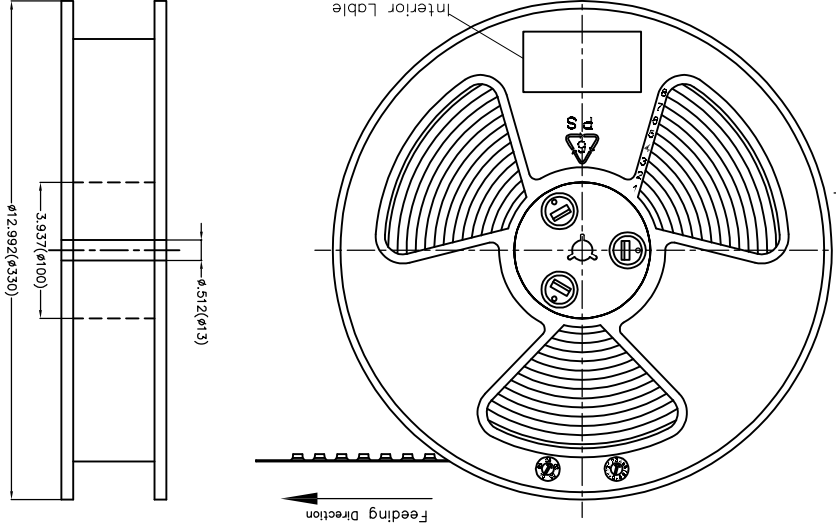
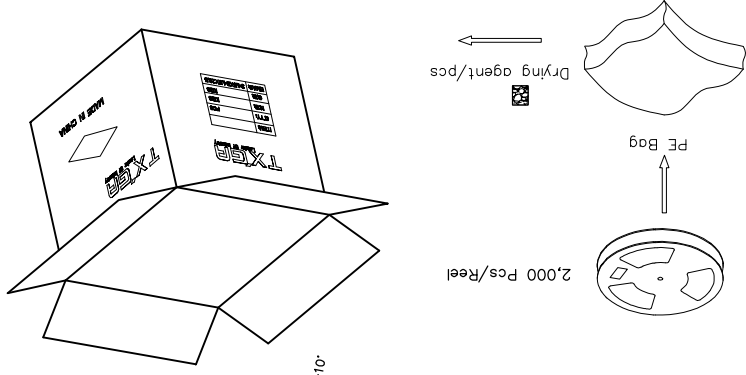
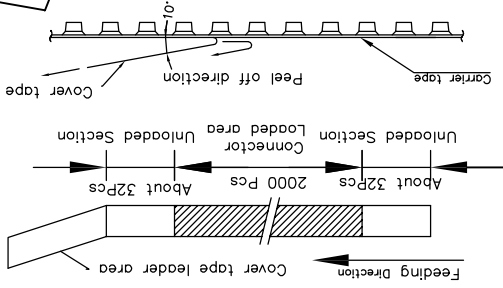
REV 0 SHEET NO. 2/3

REV	LOCATIONS	DESCRIPTION	DATE	REVISER	APPD

Note:

- 10 sprocket hole cumulative tolerance±0.2
- Carrier camber is within 1.0mm in 250mm
- Material: White Conductive polystyrene Alloy 100% recyclable
- All dimensions meet EIA-481-3 requirements
- Peel off force of cover tape&carrier tape: 20g~130g(0.2N~1.3N)
- Component load per 13" reel: 2,000 pcs

Circuits	Dimensions(in/mm)		
	A	B	C
4~9	.945(24.0)	.453(11.5)	—
10~16	1.260(32.0)	.561(14.25)	1.033(26.50)
17~27	1.732(44.0)	.797(20.25)	1.594(40.50)



THIRD ANGLE PROJECTION	DESIGN UNITS	SCALE	GENERAL TOLERANCES (UNLESS SPECIFIED)	APPROVE BY	DATE	PART NO.	ITEM NO.
	X ±.012(0.30) X ±.2 X ±.006(0.15) X ±.004(0.10)	5:1 A4	X ±.5 X ±.1 X ±.004(0.10) X ±.006(0.15)	FRANK	18/JUN/13	FFC10003-XXSBB1X4W5M	FFC10003
				CHECKED BY	DATE	TITLE	
				JACOB	18/JUN/13	FPC .039 (1.00mm) SMT	CONTACT POSITION: BOTTOM
				DRAWN BY	DATE	THIS DRAWING CONTAINS INFORMATION THAT IS PROPRIETARY TO TXGA INDUSTRIAL ELECTRONICS(SZ)CO.,LTD AND SHOULD NOT BE USED WITHOUT WRITTEN PERMISSION	
				CHEERRY	18/JUN/13		

**TXGA**  
Leader Of Industry

REV 0  
SHEET NO. 3/3

## X-ON Electronics

Largest Supplier of Electrical and Electronic Components

*Click to view similar products for [FFC & FPC Connectors](#) category:*

*Click to view products by [TXGA](#) manufacturer:*

Other Similar products are found below :

[HFW11R-1STE1H1LF](#) [FH29B-100S-0.2SHW\(99\)](#) [FA5S008HP1](#) [FH29B-120S-0.2SHW\(99\)](#) [FH29B-80S-0.2SHW\(99\)](#) [FHS-16](#) [FPH-2022G](#)  
[52610-1075](#) [52610-1275](#) [52610-1934](#) [XF3M\(1\)-1415-1B-R100](#) [501864-3091-TR225](#) [0525594033](#) [086210010340800](#) [086222026001800](#)  
[52271-2869-CUT-TAPE](#) [62674-201121DLF](#) [62684-36210E9ALF](#) [52610-1675](#) [52746-1671-TR250](#) [10051922-2810EHLF](#) [6-520415-9](#)  
[BD021-09A-A1-0350-0200-0550-LD](#) [SFV6R-1STE9HLF](#) [XF3M-2915-1B-R100](#) [1658549-1](#) [62674-221121ALF](#) [46214008010800](#)  
[046298003000883](#) [151660622](#) [842-816-2630-035](#) [AYF530665TA](#) [AYF351525](#) [046296011930846+](#) [AYF352325A](#) [046254020000800+](#)  
[FH19C-13S-0.5SH\(99\)](#) [FH39J-51S-0.3SHW\(99\)](#) [AYF355125A](#) [AYF530365TA](#) [FH29B-44S-0.2SHW\(99\)](#) [SFW5R-2STAE9LF](#) [AYF351125A](#)  
[AYF350725A](#) [62684-502100AHLF](#) [FH39-61S-0.3SHW\(99\)](#) [AYF414035A](#) [10064555-172520HLF](#) [AYF212335A](#) [504754-2500](#)