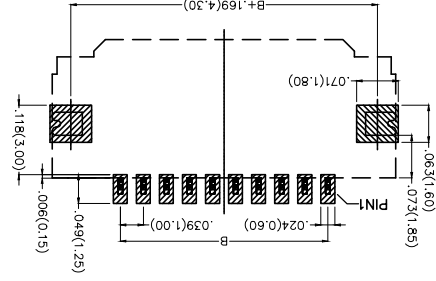
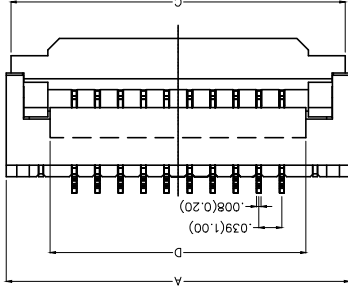
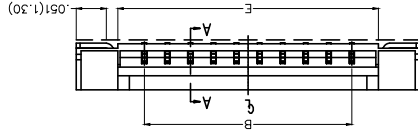
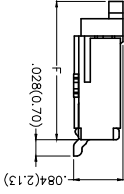
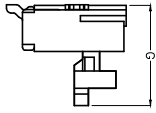
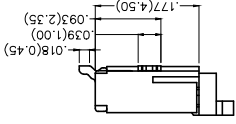
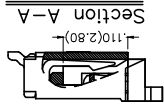
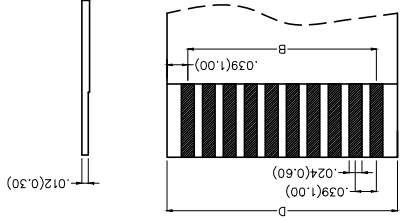


REV	LOCATIONS	DESCRIPTION	DATE	REVISER	APPD
1		MPQ: 1500 Change into 2000 pcs	05/JUN/15	KATE	FRANK

SPECIFICATIONS

Electrical
 Current Rating: 0.5A AC(rms)/DC
 Voltage Rating: 50V AC(rms)/DC
 Contact Resistance: 20 mΩ Max
 Insulation Resistance: 500 MΩ MIN
 Withstanding Voltage: 200V AC r.m.s
 Temperature Range—Operating: -25°C~+85°C
 Material
 Housing: LCP UL94V-0 Color: Beige
 Actuator: LCP UL94V-0 Color: Black
 Contact: Phosphor Bronze/Tin Plated
 Stopper: Brass/Tin Plated



Recommended P.C.Board Layout

THIRD ANGLE		DESIGN UNITS		SCALE	
○	PROJECTION	Inch (metric)	X.XX±.008(0.20)	A4	5:1
△	(UNLESS SPECIFIED)	X.XX±.008(0.20)	X.XX±.006(0.15)	A4	X.XX±.004(0.10)
DATE	CHECKED BY	DRAWN BY	CHERRY	18/JUN/13	DATE
18/JUN/13	FRANK	JACOB			
DATE	APPROVE BY	GENERAL TOLERANCES	THIS DRAWING CONTAINS INFORMATION THAT IS PROPRIETARY TO TXGA INDUSTRIAL ELECTRONICS(SZ)CO.,LTD AND SHOULD NOT BE USED WITHOUT WRITTEN PERMISSION		
18/JUN/13	FRANK	(UNLESS SPECIFIED)			

Category	Series Number	Distinction No.	Circuits	Assemble Layout	Entry Angle	B-90° Angle
FFC 100	32	4	XX	S-SMT	6	12
1	2	3	4	5	6	7
2	3	4	5	6	7	8
3	4	5	6	7	8	9
4	5	6	7	8	9	10
5	6	7	8	9	10	11
6	7	8	9	10	11	12
7	8	9	10	11	12	

Ordering Information

Applicable FFC Recommended Dimension

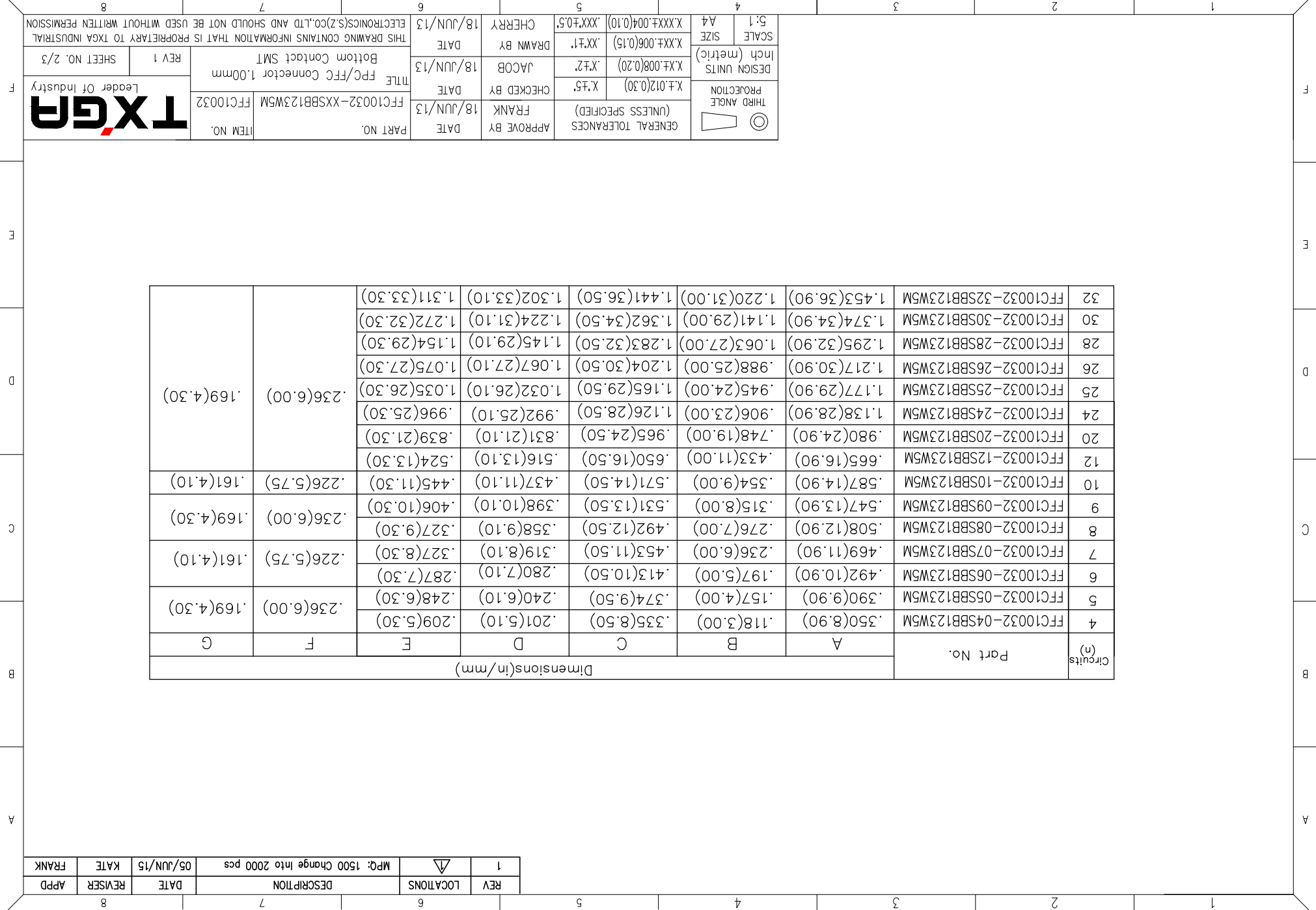


ITEM NO. FFC10032-XXSB123WM
 FFC/FPC Connector 1.00mm Bottom Contact SMT
 REV 1 SHEET NO. 1/3

REV	LOCATIONS	DESCRIPTION	DATE	REVISER	APPD
1	▽	MPQ: 1500 Change into 2000 pcs	05/JUN/15	KATE	FRANK

Circuits (n)	Part No.	Dimensions(in/mm)				
		A	B	C	D	E
4	FFC10032-04SBB123W5M	.350(8.90)	.118(3.00)	.535(8.50)	.201(5.10)	.209(5.30)
5	FFC10032-05SBB123W5M	.390(9.90)	.157(4.00)	.574(9.50)	.240(6.10)	.248(6.30)
6	FFC10032-06SBB123W5M	.492(10.90)	.197(5.00)	.413(10.50)	.280(7.10)	.287(7.30)
7	FFC10032-07SBB123W5M	.469(11.90)	.236(6.00)	.453(11.50)	.319(8.10)	.327(8.30)
8	FFC10032-08SBB123W5M	.508(12.90)	.276(7.00)	.492(12.50)	.358(9.10)	.327(9.30)
9	FFC10032-09SBB123W5M	.547(13.90)	.315(8.00)	.531(13.50)	.398(10.10)	.406(10.30)
10	FFC10032-10SBB123W5M	.587(14.90)	.354(9.00)	.571(14.50)	.437(11.10)	.445(11.30)
12	FFC10032-12SBB123W5M	.665(16.90)	.433(11.00)	.650(16.50)	.516(13.10)	.524(13.30)
20	FFC10032-20SBB123W5M	.980(24.90)	.748(19.00)	.965(24.50)	.831(21.10)	.839(21.30)
24	FFC10032-24SBB123W5M	1.138(28.90)	.906(23.00)	1.126(28.50)	.992(25.10)	.996(25.30)
25	FFC10032-25SBB123W5M	1.177(29.90)	.945(24.00)	1.165(29.50)	1.032(26.10)	1.035(26.30)
26	FFC10032-26SBB123W5M	1.217(30.90)	.988(25.00)	1.204(30.50)	1.067(27.10)	1.075(27.30)
28	FFC10032-28SBB123W5M	1.295(32.90)	1.063(27.00)	1.283(32.50)	1.145(29.10)	1.154(29.30)
30	FFC10032-30SBB123W5M	1.374(34.90)	1.141(29.00)	1.362(34.50)	1.224(31.10)	1.272(32.30)
32	FFC10032-32SBB123W5M	1.453(36.90)	1.220(31.00)	1.441(36.50)	1.302(33.10)	1.311(33.30)

SCALE		5:1	A4	
DESIGN UNITS	Inch (metric)		X.XX±.006(0.15)	.XX±.1
	X.XX±.008(0.20)		X.±.2	
THIRD ANGLE PROJECTION	X.±.012(0.30)		X.±.5	
	(UNLESS SPECIFIED)			
GENERAL TOLERANCES	APPROVE BY	DATE	PART NO.	ITEM NO.
	FRANK	18/JUN/13	FFC10032-XXSBB123W5M	
	CHECKED BY	DATE	TITLE	
	JACOB	18/JUN/13	FPC/FPC Connector 1.00mm Bottom Contact SMT	
	DRAWN BY	DATE	THIS DRAWING CONTAINS INFORMATION THAT IS PROPRIETARY TO TXGA INDUSTRIAL ELECTRONICS(Z)CO.,LTD AND SHOULD NOT BE USED WITHOUT WRITTEN PERMISSION	
	CHERRY	18/JUN/13		

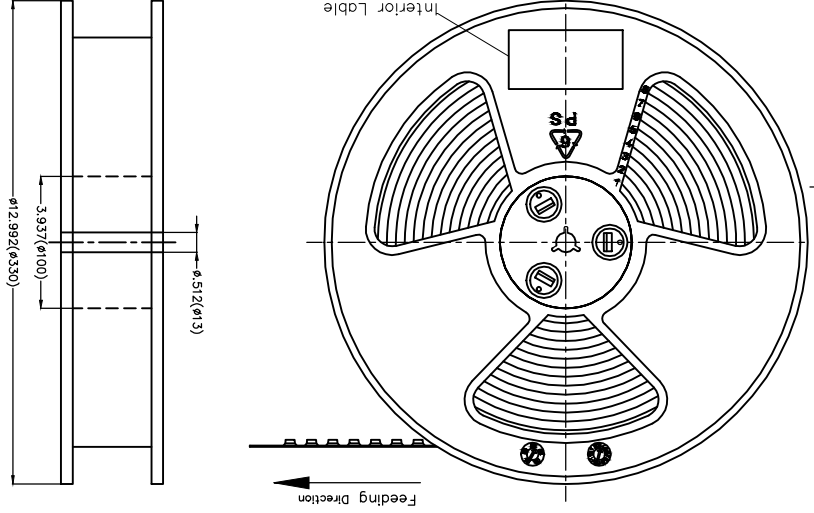
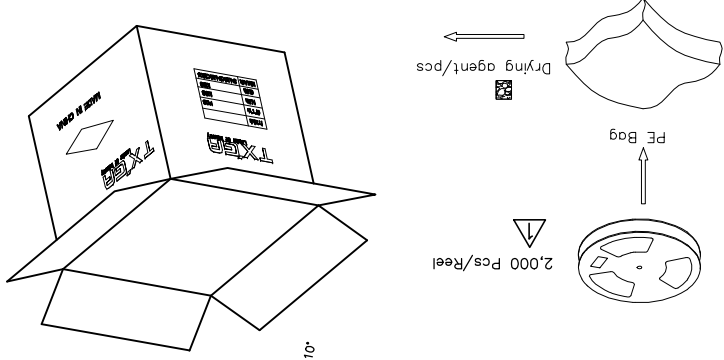
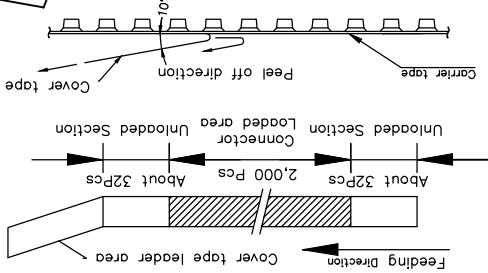


REV	LOCATIONS	DESCRIPTION	DATE	REVSER	APPD
1		MPQ: 1500 Change into 2000 pcs	05/JUN/15	KATE	FRANK

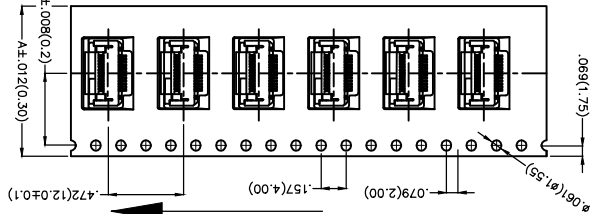
Note:

1. 10 sprocket hole cumulative tolerance±0.2
2. Carrier camber is within 1.0mm in 250mm
3. Material: White Conductive polystyrene Alloy 100% recyclable
4. All dimensions meet EIA-481-3 requirements
5. Peel off force of cover tape&carrier tape: 20g~130g(0.2N~1.3N)
6. Component load per 13" reel: 2,000 pcs

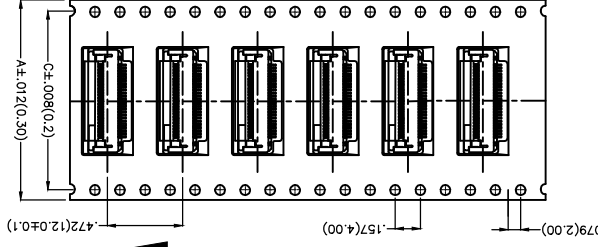
Circuits	Dimensions(in/mm)		
	A	B	C
4~9	.945(24.0)	.453(11.5)	—
10~16	1.260(32.0)	.561(14.25)	1.033(26.50)
17~27	1.732(44.0)	.797(20.25)	1.594(40.50)



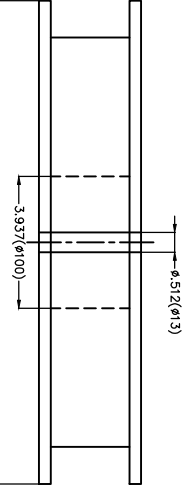
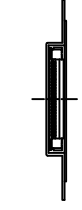
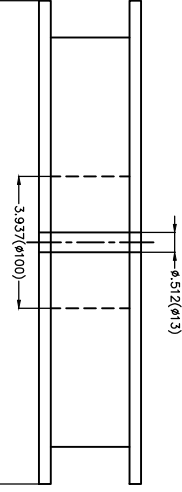
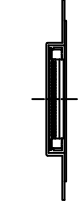
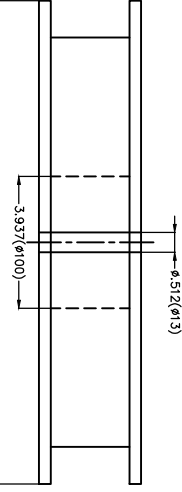
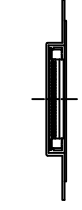
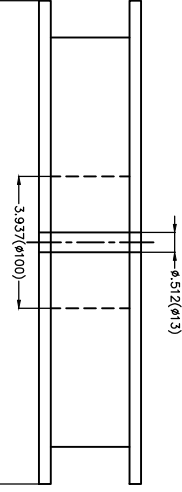
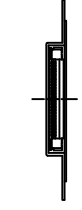
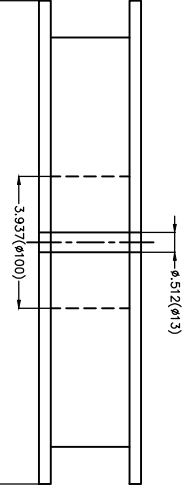
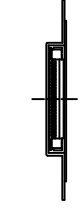
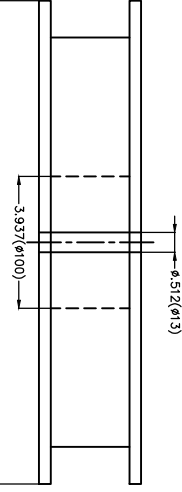
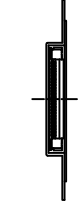
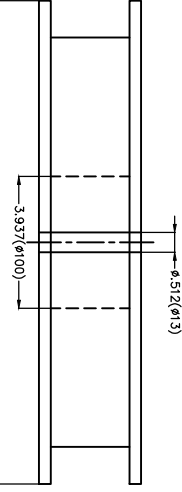
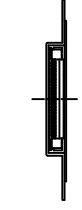
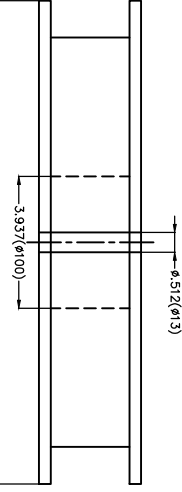
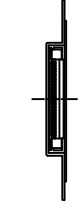
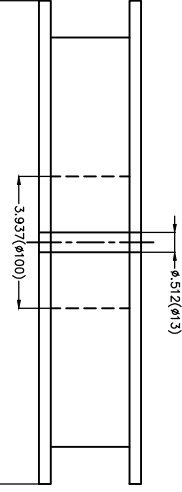
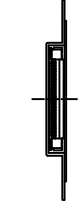
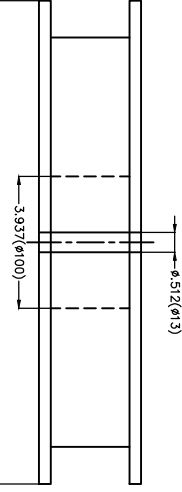
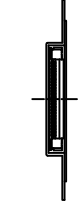
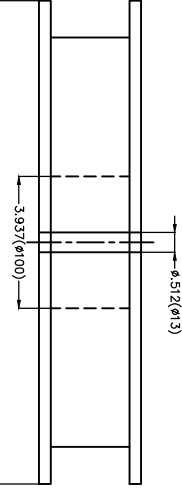
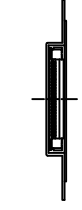
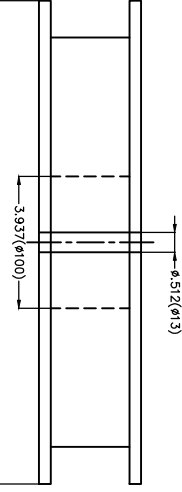
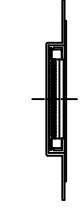
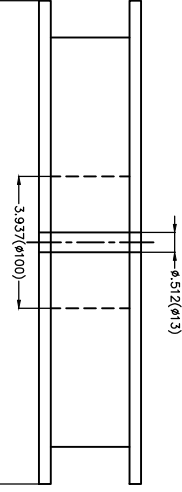
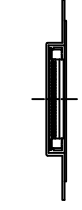
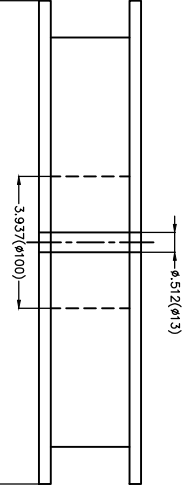
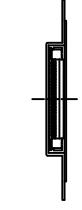
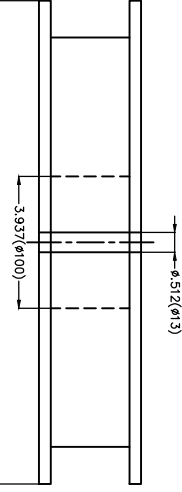
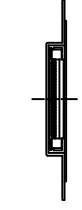
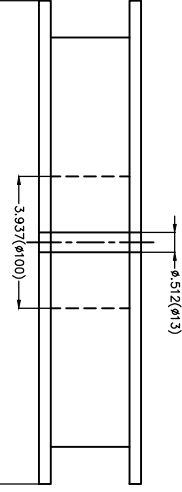
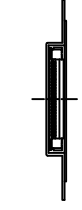
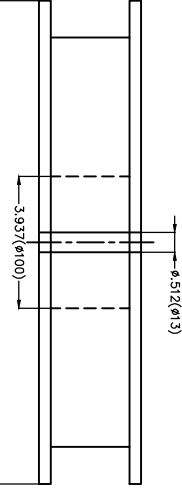
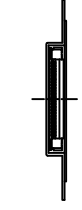
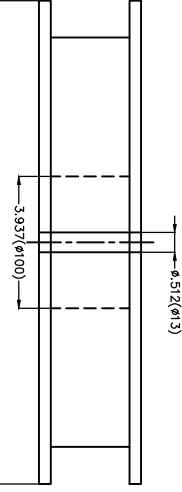
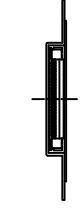
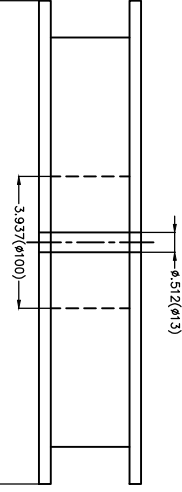
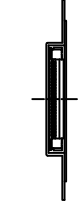
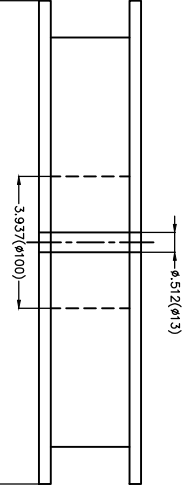
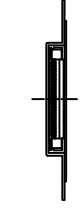
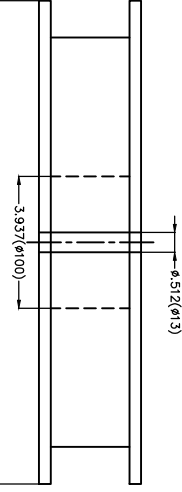
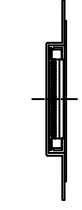
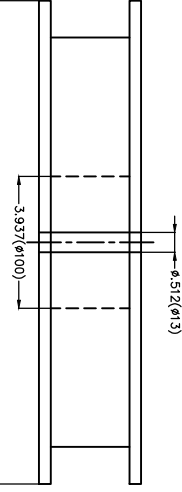
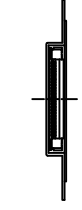
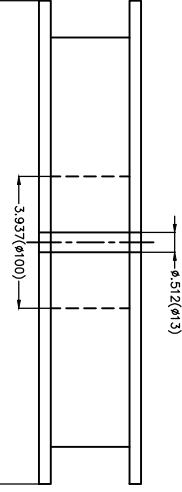
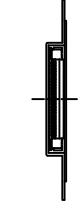
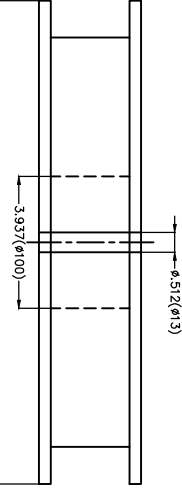
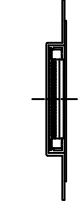
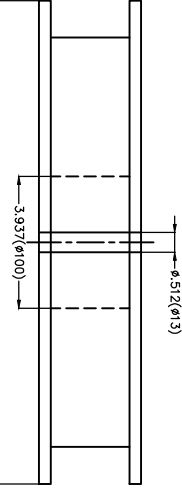
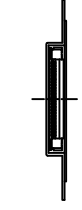
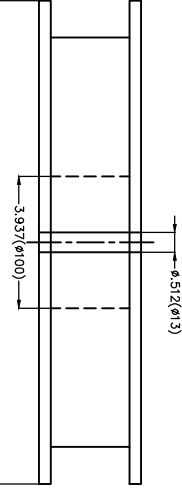
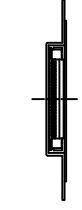
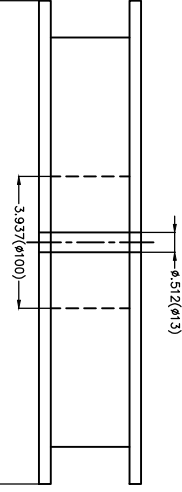
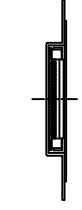
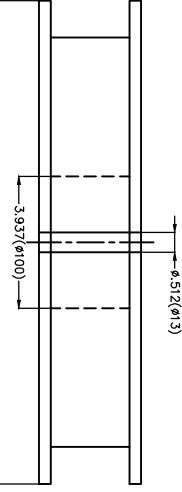
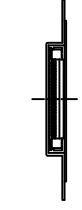
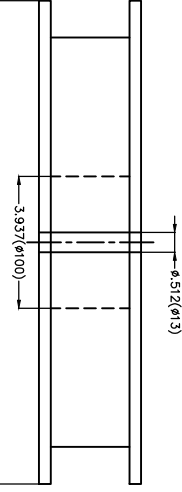
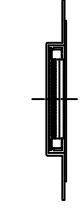
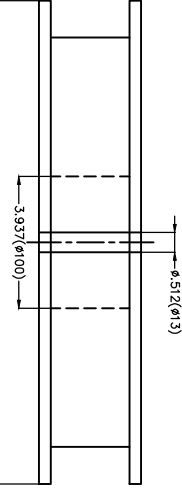
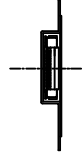
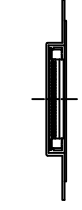
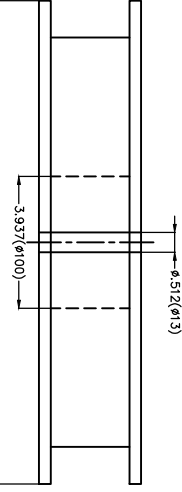
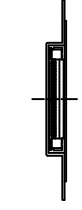
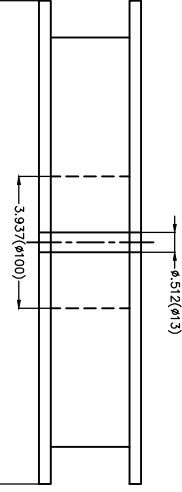
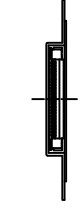
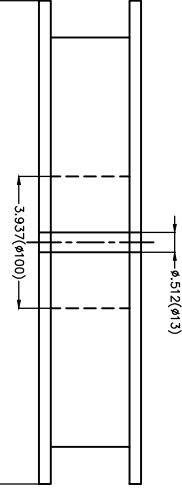
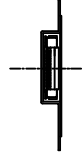
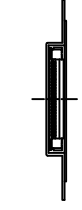
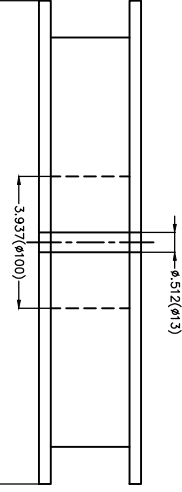
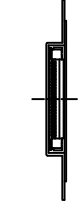
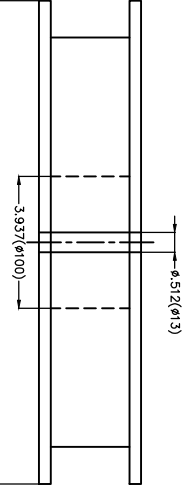
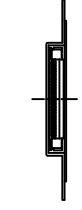
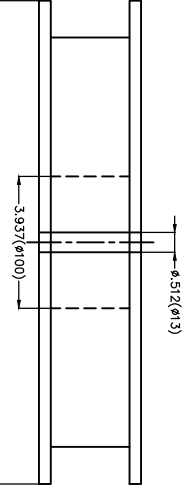
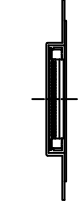
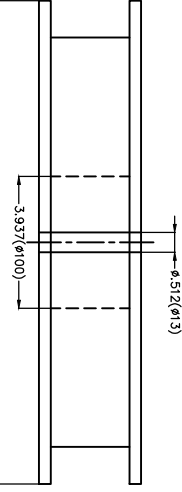
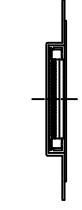
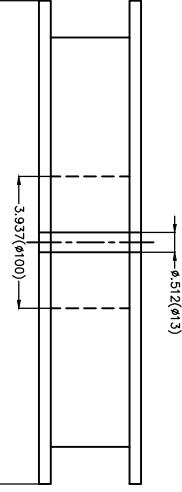
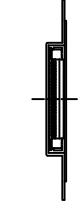
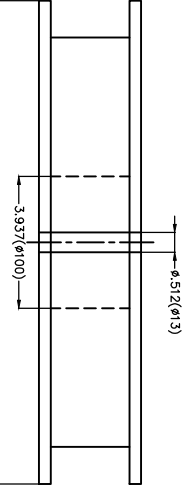
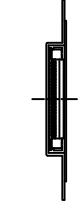
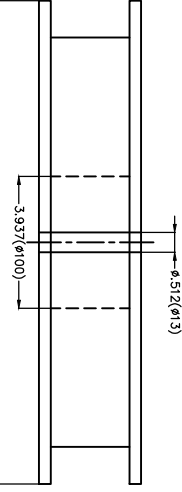
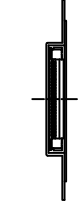
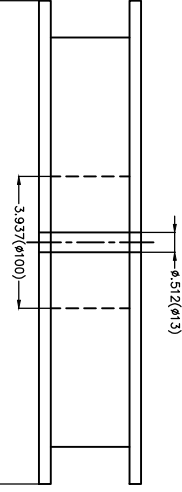
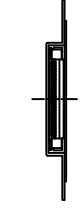
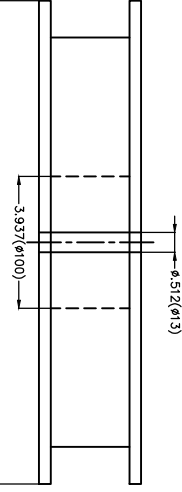
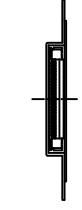
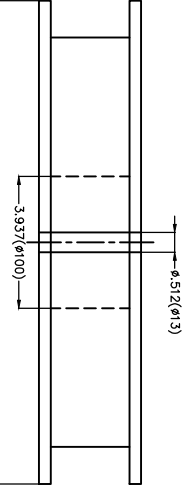
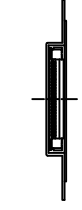
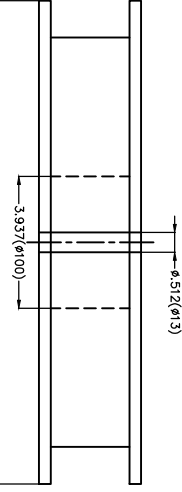
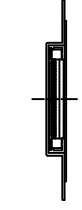
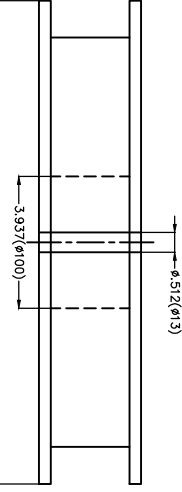
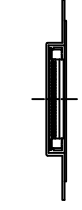
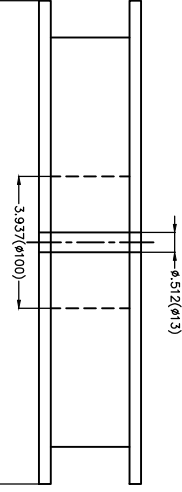
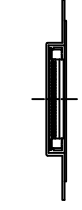
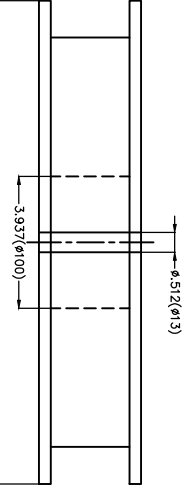
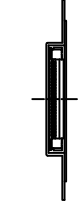
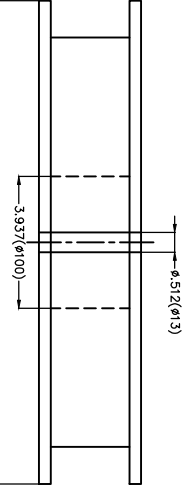
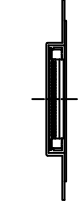
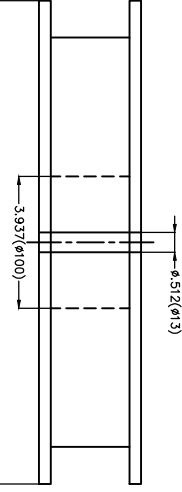
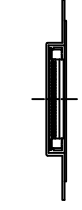
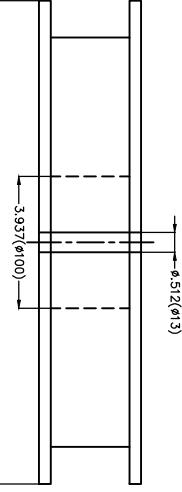
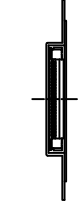
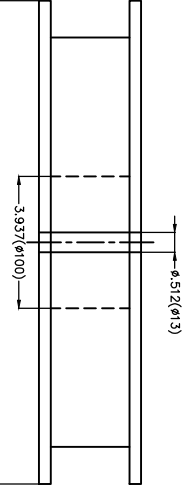
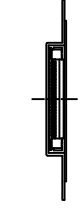
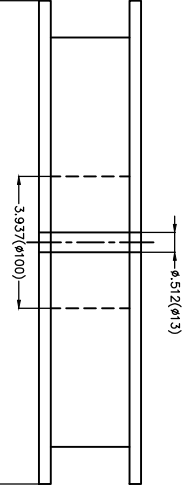
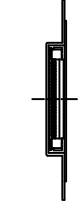
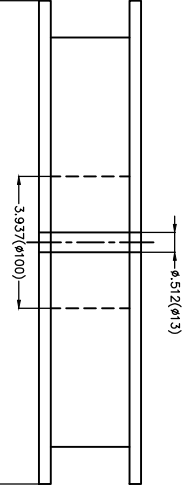
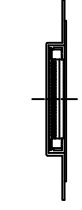
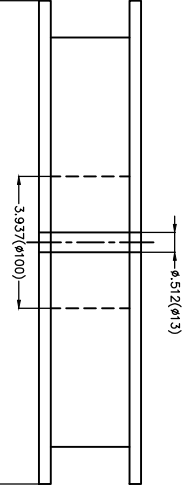
Feeding Direction



Feeding Direction



Feeding Direction



X-ON Electronics

Largest Supplier of Electrical and Electronic Components

Click to view similar products for [FFC & FPC Connectors](#) category:

Click to view products by [TXGA](#) manufacturer:

Other Similar products are found below :

[HFW11R-1STE1H1LF](#) [FH29B-100S-0.2SHW\(99\)](#) [FA5S008HP1](#) [FH29B-120S-0.2SHW\(99\)](#) [FH29B-80S-0.2SHW\(99\)](#) [FHS-16](#) [FPH-2022G](#)
[52610-1075](#) [52610-1275](#) [52610-1934](#) [XF3M\(1\)-1415-1B-R100](#) [501864-3091-TR225](#) [0525594033](#) [086210010340800](#) [086222026001800](#)
[52271-2869-CUT-TAPE](#) [62674-201121DLF](#) [62684-36210E9ALF](#) [52610-1675](#) [52746-1671-TR250](#) [10051922-2810EHLF](#) [6-520415-9](#)
[BD021-09A-A1-0350-0200-0550-LD](#) [SFV6R-1STE9HLF](#) [XF3M-2915-1B-R100](#) [1658549-1](#) [62674-221121ALF](#) [46214008010800](#)
[046298003000883](#) [151660622](#) [842-816-2630-035](#) [AYF530665TA](#) [AYF351525](#) [046296011930846+](#) [AYF352325A](#) [046254020000800+](#)
[FH19C-13S-0.5SH\(99\)](#) [FH39J-51S-0.3SHW\(99\)](#) [AYF355125A](#) [AYF530365TA](#) [FH29B-44S-0.2SHW\(99\)](#) [SFW5R-2STAE9LF](#) [AYF351125A](#)
[AYF350725A](#) [62684-502100AHLF](#) [FH39-61S-0.3SHW\(99\)](#) [AYF414035A](#) [10064555-172520HLF](#) [AYF212335A](#) [504754-2500](#)