

REV	LOCATIONS	DESCRIPTION	DATE	REVISER	APPD

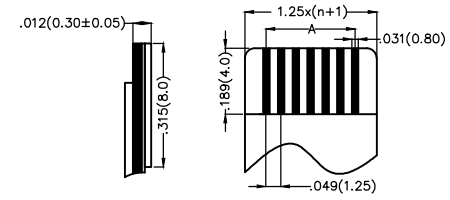
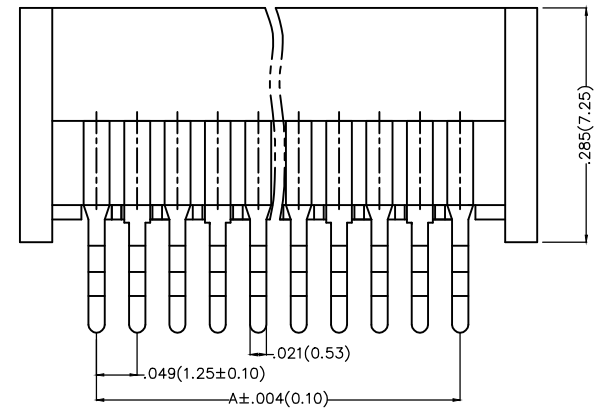
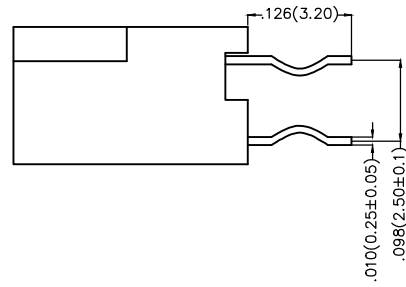
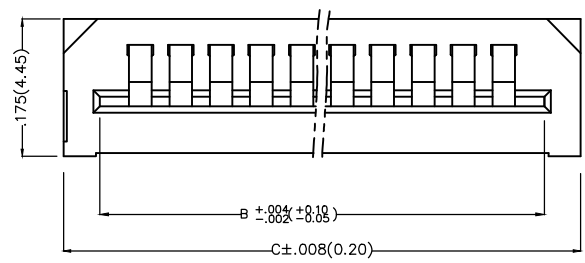
SPECIFICATIONS

Electrical

Current Rating: 1A AC(rms)/DC
Voltage Rating: 125V AC(rms)/DC
Contact Resistance: 20 m Ω Max
Insulation Resistance: 500 M Ω MIN
Withstanding Voltage: 500V AC r.m.s
Temperature Range—Operating: -40°C~+85°C

Material and Plating

Housing: PA46 UL 94V-0
Actuator: Heat Resistant Polymer UL 94V-0
Terminal: Phosphor Bronze/Tin-Plated
Stopper: Phosphor Bronze/Tin-Plated

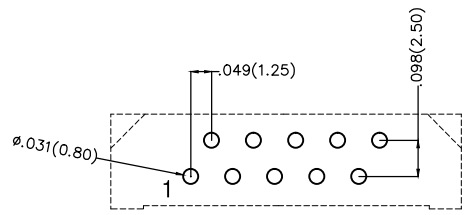


Applicable FFC Recommended Dimension

Ordering Information

FFC 125 01 — XX D S A 2 2 4 W1 L — J
1 2 3 4 5 6 7 8 9 10 11 12 13

1 Category FFC-FPC	2 Series Number 125-Pitch1.25mm	3 Distinction No. 01	4 Circuits XX	5 Assemble Layout D-DIP	6 Entry Angle S-180° Vertical
7 Contact Position A-Positive Needle	8 ZIF 2-NOT ZIF	9 Plating 2-Tin Plated	10 Material-Resin 4-PA46	11 Color-Resin W1-White	12 Packaging L-Tube
				13 Type J-Type J	



Recommended P.C.Board Layout

 THIRD ANGLE PROJECTION	GENERAL TOLERANCES (UNLESS SPECIFIED)		APPROVE BY FRANK	DATE 5/AUG/13	PART NO. FFC12501-XXDSA224WIL-J	ITEM NO. FFC12501	 Leader Of Industry	
	DESIGN UNITS Inch (metric)	X.±.012(0.30) X.X±.008(0.20) X.XX±.006(0.15) X.XXX±.004(0.10)	X.'±5' .X'±2' .XX'±1' .XXX'±0.5'	CHECKED BY CHERRY	DATE 5/AUG/13	TITLE FPC/FFC connector 1.25mm Positive needle DIP		REV 0
SCALE 5:1	SIZE A4		DRAWN BY KEVIN	DATE 5/AUG/13	THIS DRAWING CONTAINS INFORMATION THAT IS PROPRIETARY TO TXGA INDUSTRIAL ELECTRONICS(S.Z)CO.,LTD AND SHOULD NOT BE USED WITHOUT WRITTEN PERMISSION			

1 2 3 4 5 6 7 8

REV	LOCATIONS	DESCRIPTION	DATE	REVISER	APPD

A

A

B

B

C

C

D

D



E

E

F

F

Circuits (n)	Part No.	Dimensions(in/mm)			Circuits (n)	Part No.	Dimensions(in/mm)		
		A	B	C			A	B	C
4	FFC12501-04DSA224W1L-J	.148(3.75)	.246(6.25)	.335(8.50)	17	FFC12501-17DSA224W1L-J	.787(20.00)	.886(22.50)	.942(24.75)
5	FFC12501-05DSA224W1L-J	.197(5.00)	.295(7.50)	.384(9.75)	18	FFC12501-18DSA224W1L-J	.837(21.25)	.935(23.75)	1.024(26.00)
6	FFC12501-06DSA224W1L-J	.246(6.25)	.344(8.75)	.433(11.00)	19	FFC12501-19DSA224W1L-J	.886(22.50)	.984(25.00)	1.073(27.25)
7	FFC12501-07DSA224W1L-J	.295(7.50)	.394(10.00)	.482(12.25)	20	FFC12501-20DSA224W1L-J	.935(23.75)	1.033(26.25)	1.122(28.50)
8	FFC12501-08DSA224W1L-J	.344(8.75)	.443(11.25)	.531(13.50)	21	FFC12501-21DSA224W1L-J	.984(25.00)	1.083(27.50)	1.171(29.75)
9	FFC12501-09DSA224W1L-J	.394(10.00)	.492(12.50)	.581(14.75)	22	FFC12501-22DSA224W1L-J	1.033(26.25)	1.132(28.75)	1.220(31.00)
10	FFC12501-10DSA224W1L-J	.443(11.25)	.541(13.75)	.630(16.00)	23	FFC12501-23DSA224W1L-J	1.083(27.50)	1.182(30.00)	1.270(32.25)
11	FFC12501-11DSA224W1L-J	.492(12.50)	.591(15.00)	.679(17.25)	24	FFC12501-24DSA224W1L-J	1.132(28.75)	1.230(31.25)	1.318(33.50)
12	FFC12501-12DSA224W1L-J	.541(13.75)	.638(16.25)	.728(18.50)	25	FFC12501-25DSA224W1L-J	1.182(30.00)	1.280(32.50)	1.368(34.75)
13	FFC12501-13DSA224W1L-J	.591(15.00)	.689(17.50)	.788(19.75)	26	FFC12501-26DSA224W1L-J	1.230(31.25)	1.329(33.75)	1.417(36.00)
14	FFC12501-14DSA224W1L-J	.638(16.25)	.738(18.75)	.828(21.00)	27	FFC12501-27DSA224W1L-J	1.280(32.50)	1.377(35.00)	1.467(37.25)
15	FFC12501-15DSA224W1L-J	.689(17.50)	.787(20.00)	.876(22.25)	28	FFC12501-28DSA224W1L-J	1.329(33.75)	1.427(36.25)	1.516(38.50)
16	FFC12501-16DSA224W1L-J	.738(18.75)	.837(21.25)	.925(23.50)	29	FFC12501-29DSA224W1L-J	1.377(35.00)	1.476(37.50)	1.565(39.75)

 THIRD ANGLE PROJECTION	GENERAL TOLERANCES (UNLESS SPECIFIED)		APPROVE BY	DATE	PART NO.	ITEM NO.	 Leader Of Industry
	X.±.012(0.30)	X.±5'	FRANK	5/AUG/13	FFC12501-XXDSA224W1L-J	FFC12501	
	X.X±.008(0.20)	.X'±2'	CHECKED BY	DATE	TITLE		
	X.XX±.006(0.15)	.XX'±1'	CHERRY	5/AUG/13	FPC/FFC connector 1.25mm Positive needle DIP	REV 0 SHEET NO. 2/2	
SCALE	SIZE	X.XXX±.004(0.10)	.XXX'±0.5'	DRAWN BY	DATE	THIS DRAWING CONTAINS INFORMATION THAT IS PROPRIETARY TO TXGA INDUSTRIAL ELECTRONICS(S.Z)CO.,LTD AND SHOULD NOT BE USED WITHOUT WRITTEN PERMISSION	
5:1	A4			KEVIN	5/AUG/13		

1 2 3 4 5 6 7 8

X-ON Electronics

Largest Supplier of Electrical and Electronic Components

Click to view similar products for [FFC & FPC Connectors](#) category:

Click to view products by [TXGA](#) manufacturer:

Other Similar products are found below :

[HFW11R-1STE1H1LF](#) [FH29B-100S-0.2SHW\(99\)](#) [FA5S008HP1](#) [FH29B-120S-0.2SHW\(99\)](#) [FH29B-80S-0.2SHW\(99\)](#) [FHS-16](#) [FPH-2022G](#)
[52610-1075](#) [52610-1275](#) [52610-1934](#) [XF3M\(1\)-1415-1B-R100](#) [501864-3091-TR225](#) [0525594033](#) [086210010340800](#) [086222026001800](#)
[52271-2869-CUT-TAPE](#) [62674-201121DLF](#) [62684-36210E9ALF](#) [52610-1675](#) [52746-1671-TR250](#) [10051922-2810EHLF](#) [6-520415-9](#)
[BD021-09A-A1-0350-0200-0550-LD](#) [SFV6R-1STE9HLF](#) [XF3M-2915-1B-R100](#) [1658549-1](#) [62674-221121ALF](#) [46214008010800](#)
[046298003000883](#) [151660622](#) [842-816-2630-035](#) [AYF530665TA](#) [AYF351525](#) [046296011930846+](#) [AYF352325A](#) [046254020000800+](#)
[FH19C-13S-0.5SH\(99\)](#) [FH39J-51S-0.3SHW\(99\)](#) [AYF355125A](#) [AYF530365TA](#) [FH29B-44S-0.2SHW\(99\)](#) [SFW5R-2STAE9LF](#) [AYF351125A](#)
[AYF350725A](#) [62684-502100AHLF](#) [FH39-61S-0.3SHW\(99\)](#) [AYF414035A](#) [10064555-172520HLF](#) [AYF212335A](#) [504754-2500](#)