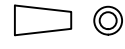
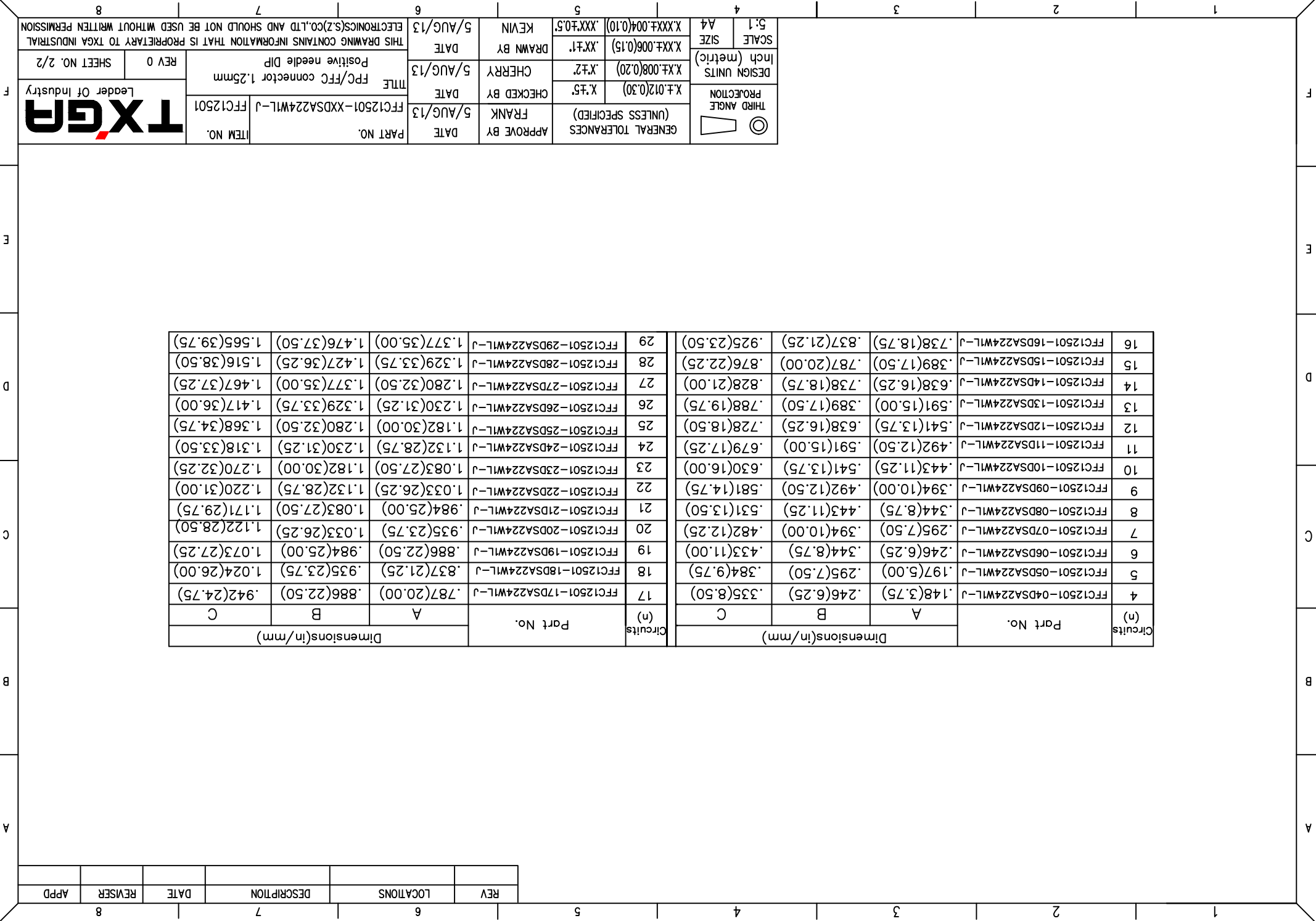




REV	LOCATIONS	DESCRIPTION	DATE	REVERSER	APPD

Circuits (n)	Part No.	Dimensions(in/mm)		
		A	B	C
4	FFC12501-04DSA224W1L-J	.148(3.75)	.246(6.25)	.335(8.50)
5	FFC12501-05DSA224W1L-J	.197(5.00)	.295(7.50)	.384(9.75)
6	FFC12501-06DSA224W1L-J	.246(6.25)	.344(8.75)	.433(11.00)
7	FFC12501-07DSA224W1L-J	.295(7.50)	.394(10.00)	.482(12.25)
8	FFC12501-08DSA224W1L-J	.344(8.75)	.443(11.25)	.531(13.50)
9	FFC12501-09DSA224W1L-J	.394(10.00)	.492(12.50)	.581(14.75)
10	FFC12501-10DSA224W1L-J	.443(11.25)	.541(13.75)	.630(16.00)
11	FFC12501-11DSA224W1L-J	.492(12.50)	.591(15.00)	.679(17.25)
12	FFC12501-12DSA224W1L-J	.541(13.75)	.638(16.25)	.728(18.50)
13	FFC12501-13DSA224W1L-J	.591(15.00)	.689(17.50)	.788(19.75)
14	FFC12501-14DSA224W1L-J	.638(16.25)	.738(18.75)	.828(21.00)
15	FFC12501-15DSA224W1L-J	.689(17.50)	.787(20.00)	.876(22.25)
16	FFC12501-16DSA224W1L-J	.738(18.75)	.837(21.25)	.925(23.50)
17	FFC12501-17DSA224W1L-J	.787(20.00)	.886(22.50)	.942(24.75)
18	FFC12501-18DSA224W1L-J	.837(21.25)	.935(23.75)	1.024(26.00)
19	FFC12501-19DSA224W1L-J	.886(22.50)	.984(25.00)	1.073(27.25)
20	FFC12501-20DSA224W1L-J	.935(23.75)	1.033(26.25)	1.122(28.50)
21	FFC12501-21DSA224W1L-J	.984(25.00)	1.083(27.50)	1.171(29.75)
22	FFC12501-22DSA224W1L-J	1.033(26.25)	1.132(28.75)	1.220(31.00)
23	FFC12501-23DSA224W1L-J	1.083(27.50)	1.182(30.00)	1.270(32.25)
24	FFC12501-24DSA224W1L-J	1.132(28.75)	1.230(31.25)	1.318(33.50)
25	FFC12501-25DSA224W1L-J	1.182(30.00)	1.280(32.50)	1.368(34.75)
26	FFC12501-26DSA224W1L-J	1.230(31.25)	1.329(33.75)	1.417(36.00)
27	FFC12501-27DSA224W1L-J	1.280(32.50)	1.377(35.00)	1.467(37.25)
28	FFC12501-28DSA224W1L-J	1.329(33.75)	1.427(36.25)	1.516(38.50)
29	FFC12501-29DSA224W1L-J	1.377(35.00)	1.476(37.50)	1.565(39.75)

THIRD ANGLE PROJECTION		GENERAL TOLERANCES (UNLESS SPECIFIED)	APPROVE BY	DATE	PART NO.	ITEM NO.
		X ±.012(0.30)	FRANK	5/AUG/13	FFC12501-XXDSA224W1L-J	FFC12501
DESIGN UNITS		X.X±.008(0.20)	CHECKED BY	DATE	TITLE	
Inch (metric)		X.X±.006(0.15)	CHERRY	5/AUG/13	FPC/FPC connector 1.25mm	REV 0
SCALE	SIZE	X.XXX±.004(0.10)	DRAWN BY	DATE	THIS DRAWING CONTAINS INFORMATION THAT IS PROPRIETARY TO TXGA INDUSTRIAL ELECTRONICS(S)2)CO.,LTD AND SHOULD NOT BE USED WITHOUT WRITTEN PERMISSION	
5:1	A4	X.XXX±0.5	KEVIN	5/AUG/13	SHEET NO. 2/2	



## X-ON Electronics

Largest Supplier of Electrical and Electronic Components

*Click to view similar products for [FFC & FPC Connectors](#) category:*

*Click to view products by [TXGA](#) manufacturer:*

Other Similar products are found below :

[HFW11R-1STE1H1LF](#) [FH29B-100S-0.2SHW\(99\)](#) [FA5S008HP1](#) [FH29B-120S-0.2SHW\(99\)](#) [FH29B-80S-0.2SHW\(99\)](#) [FHS-16](#) [FPH-2022G](#)  
[52610-1075](#) [52610-1275](#) [52610-1934](#) [XF3M\(1\)-1415-1B-R100](#) [501864-3091-TR225](#) [0525594033](#) [086210010340800](#) [086222026001800](#)  
[52271-2869-CUT-TAPE](#) [62674-201121DLF](#) [62684-36210E9ALF](#) [52610-1675](#) [52746-1671-TR250](#) [10051922-2810EHLF](#) [6-520415-9](#)  
[BD021-09A-A1-0350-0200-0550-LD](#) [SFV6R-1STE9HLF](#) [XF3M-2915-1B-R100](#) [1658549-1](#) [62674-221121ALF](#) [46214008010800](#)  
[046298003000883](#) [151660622](#) [842-816-2630-035](#) [AYF530665TA](#) [AYF351525](#) [046296011930846+](#) [AYF352325A](#) [046254020000800+](#)  
[FH19C-13S-0.5SH\(99\)](#) [FH39J-51S-0.3SHW\(99\)](#) [AYF355125A](#) [AYF530365TA](#) [FH29B-44S-0.2SHW\(99\)](#) [SFW5R-2STAE9LF](#) [AYF351125A](#)  
[AYF350725A](#) [62684-502100AHLF](#) [FH39-61S-0.3SHW\(99\)](#) [AYF414035A](#) [10064555-172520HLF](#) [AYF212335A](#) [504754-2500](#)