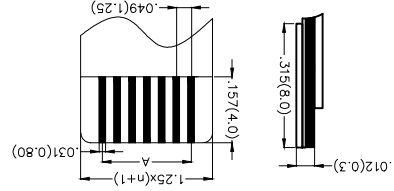


REV	1	LOCATIONS	MOQ: Change 1,000 into 1,500 pcs/reel	DATE	14/JUL/17	REVISER	KATE	FRANK
APPD								

SPECIFICATIONS

Electrical
 Current Rating: 1.0A AC(rms)/DC
 Voltage Rating: 50V AC(rms)/DC
 Contact Resistance: 20 mΩ Max
 Insulation Resistance: 800 MΩ MIN
 Withstanding Voltage: 500V AC r.m.s
 Operating Temperature: -40°C~+85°C
 Material and Plating
 Housing: PA6T UL94V-0
 Contact: Phosphor Bronze/Tin Plated



Applicable FFC Recommended Dimension

Ordering Information

FFC 125 10 - XX S B D 2 2 9 2 4 K6 M 12

1	Category	FFC-FPC
2	Series Number	125-Pitch1.25mm
3	Distinction No.	4
4	Circuits	XX
5	Assemble Layout	S-SMT
6	Entry Angle	B-90° Angle
7	Contact Type	D-Double Contact
8	ZIF	ZIF
9	Plating	2-Tin Plated
10	Material-Resin	4-PA6T
11	Color-Resin	K6-Black
12	M-Reel	Packaging

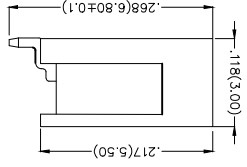
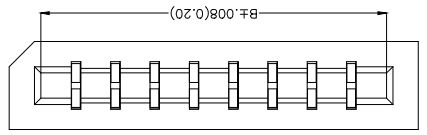
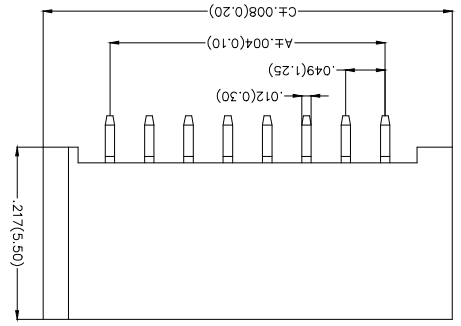
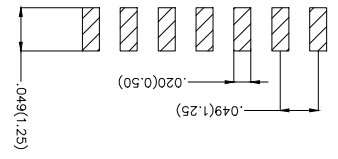
GENERAL TOLERANCES (UNLESS SPECIFIED)	APPROVE BY	DATE	PART NO.	ITEM NO.
X.±.012(0.30)	FRANK	18/JUN/13	FFC12510-XXSBD224K6M	FFC12510
X.±.008(0.20)	CHECKED BY	DATE	TITLE	
X.±.004(0.10)	CHERRY	18/JUN/13	FPC/FPC Connector 1.25mm	
XX±.006(0.15)	DRAWN BY	DATE	Double Contact SMT	
XX±.05	KEVIN	18/JUN/13	FPC/FPC Connector 1.25mm	

THIRD ANGLE PROJECTION	DESIGN UNITS	SCALE	SHEET NO. 1/3
	Inch (metric)	5:1	REV 1
	X.±.012(0.30)	A4	
	X.±.008(0.20)		
	XX±.004(0.10)		

TXGN
 Leader Of Industry

THIS DRAWING CONTAINS INFORMATION THAT IS PROPRIETARY TO TXGA INDUSTRIAL ELECTRONICS(SZ)CO.,LTD AND SHOULD NOT BE USED WITHOUT WRITTEN PERMISSION

Recommended P.C.Board Layout

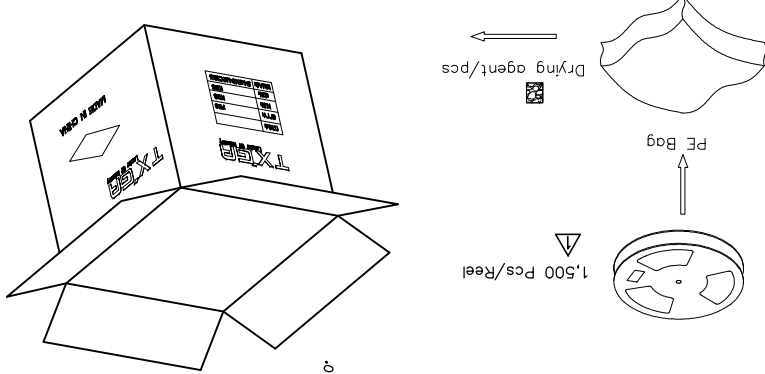
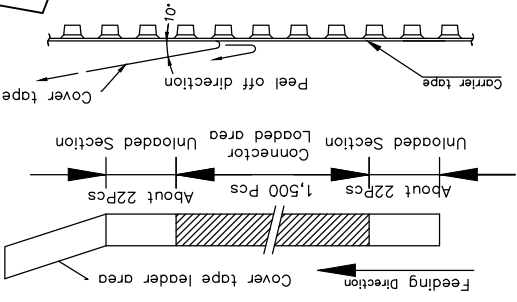


REV	LOCATIONS	DESCRIPTION	DATE	REVISER	APPD
1	▽	MOQ: Change 1,000 into 1,500 pcs/reel	14/JUL/17	KATE	FRANK

Note:

- 10 sprocket hole cumulative tolerance±0.2
- Carrier camber is within 1.0mm in 250mm
- Material: White Conductive polystyrene Alloy 100% recyclable
- All dimensions meet EIA-481-5 requirements
- Peel off force of cover tape&carrier tape: 20g~130g(0.2N~1.3N)
- Component load per 13" reel: 1,500 pcs

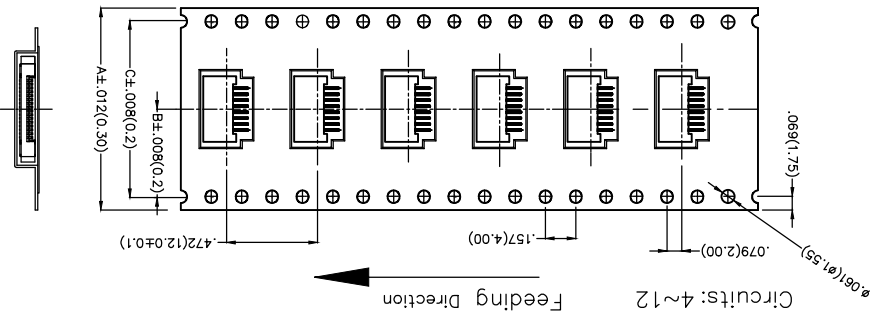
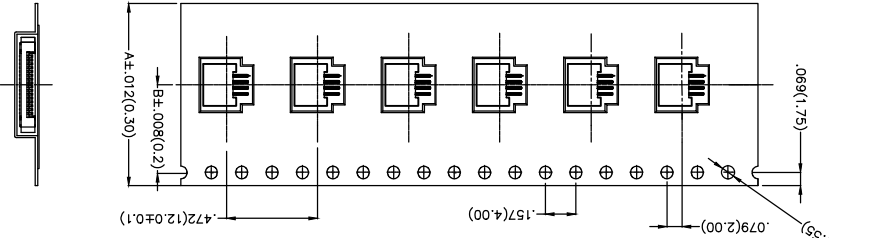
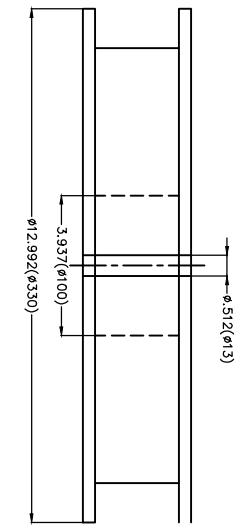
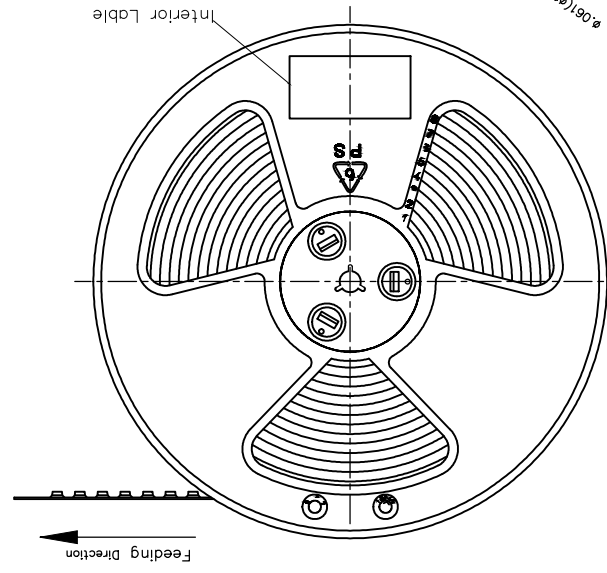
Circuits	A	B	C	Dimensions(in/mm)		
(N)						
4	6.30(16.0)	.295(7.50)	—	30	2.240(56.0)	1.033(26.25)
5~12	.945(24.0)	.453(11.5)	—	17~28	1.732(44.0)	1.594(40.50)
13~16	1.260(32.0)	.561(14.25)	1.033(28.50)	13~16	1.260(32.0)	1.033(28.50)
17~28	1.732(44.0)	.797(20.25)	1.594(40.50)	17~28	1.732(44.0)	1.594(40.50)
30	2.240(56.0)	1.033(26.25)	2.067(52.50)	30	2.240(56.0)	1.033(26.25)



DATE	APPROVE BY	GENERAL TOLERANCES (UNLESS SPECIFIED)	THIRD ANGLE PROJECTION
18/JUN/13	FRANK	X±.012(0.30)	
DATE	CHECKED BY	X.X±.008(0.20)	DESIGN UNITS
18/JUN/13	JACOB	X.X±.006(0.15)	Inch (metric)
DATE	DRAWN BY	X.XX±.004(0.10)	SCALE
18/JUN/13	CHERRY	X.XX±0.5	5:1 A4



THIS DRAWING CONTAINS INFORMATION THAT IS PROPRIETARY TO TXGA INDUSTRIAL ELECTRONICS(Z)CO.,LTD AND SHOULD NOT BE USED WITHOUT WRITTEN PERMISSION



8 7 6 5 4 3 2 1

E D C B A

8 7 6 5 4 3 2 1

X-ON Electronics

Largest Supplier of Electrical and Electronic Components

Click to view similar products for [FFC & FPC Connectors](#) category:

Click to view products by [TXGA](#) manufacturer:

Other Similar products are found below :

[HFW11R-1STE1H1LF](#) [FH29B-100S-0.2SHW\(99\)](#) [FA5S008HP1](#) [FH29B-120S-0.2SHW\(99\)](#) [FH29B-80S-0.2SHW\(99\)](#) [FHS-16](#) [FPH-2022G](#)
[52610-1075](#) [52610-1275](#) [52610-1934](#) [XF3M\(1\)-1415-1B-R100](#) [501864-3091-TR225](#) [0525594033](#) [086210010340800](#) [086222026001800](#)
[52271-2869-CUT-TAPE](#) [62674-201121DLF](#) [62684-36210E9ALF](#) [52610-1675](#) [52746-1671-TR250](#) [10051922-2810EHLF](#) [6-520415-9](#)
[BD021-09A-A1-0350-0200-0550-LD](#) [SFV6R-1STE9HLF](#) [XF3M-2915-1B-R100](#) [1658549-1](#) [62674-221121ALF](#) [46214008010800](#)
[046298003000883](#) [151660622](#) [842-816-2630-035](#) [AYF530665TA](#) [AYF351525](#) [046296011930846+](#) [AYF352325A](#) [046254020000800+](#)
[FH19C-13S-0.5SH\(99\)](#) [FH39J-51S-0.3SHW\(99\)](#) [AYF355125A](#) [AYF530365TA](#) [FH29B-44S-0.2SHW\(99\)](#) [SFW5R-2STAE9LF](#) [AYF351125A](#)
[AYF350725A](#) [62684-502100AHLF](#) [FH39-61S-0.3SHW\(99\)](#) [AYF414035A](#) [10064555-172520HLF](#) [AYF212335A](#) [504754-2500](#)