

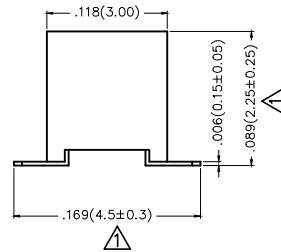
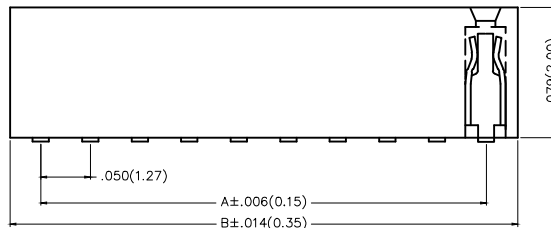
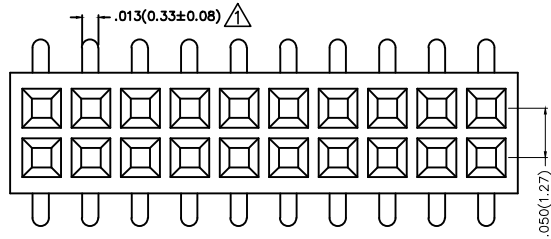
REV	LOCATIONS	DESCRIPTION	DATE	REVISER	APPD
1	△	Size changes	08/JUL/20	KATE	CHERRY

Electrical

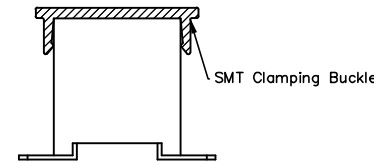
Current Rating: 1A AC(rms)/DC
Voltage Rating: 250V AC(rms)/DC
Contact Resistance: 20 mΩ Max
Insulation Resistance: 500 MΩ MIN
Withstanding Voltage: 100V AC r.m.s
Temperature Range—Operating: -25°C~+85°C

Material and Plating

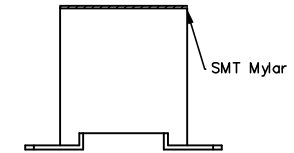
Housing: PA6T(UL 94V-0)
Contact Pin: Brass
Plating: Gold Plated/Selective gold in contact area, tin on tail



Packing: M—Reel(With Cap)



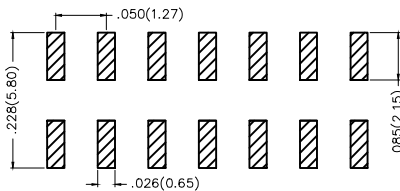
Packing: M1—Reel(With Mylar)



Ordering Information

FFH 127 05 — D XX S X XX 4 K6 XX
1 2 3 4 5 6 7 8 9 10 11

1	Category FFH—Female Header	2	Series Number 127—Pitch1.27mm	3	Distinction No. 05	4	Row Option D—Double Row	5	Circuits XX	6	Entry Angle S—180° Vertical
7	Plating 1—Gold Plated 3—Selective gold in contact area, tin on tail	8	Thickness of Plating 00—Gold Flash 05—5μ" Custom plate available	9	Material—Resin 4—PA6T	10	Color—Resin K6—Black	11	Packaging M—Reel(With Cap) M1—Reel(With Mylar)		

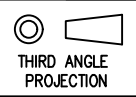



Recommended P.C.Board Layout

THIRD ANGLE PROJECTION		GENERAL TOLERANCES (UNLESS SPECIFIED)		APPROVE BY	DATE	PART NO.	ITEM NO.	TXGA Leader Of Industry	
DESIGN UNITS Inch (metric)	X.±.012(0.30)	X.±5'	CHECKED BY	FRANK	10/JUL/13	FFH12705—DXXSXXX4K6XX	FFH12705	REV 1	SHEET NO. 1/2
	X.X±.008(0.20)	.X'±2'	CHECKED BY	CHERRY	10/JUL/13	TITLE	Board to Board (Female Header) Pitch 1.27mm 180° Vertical (SMT)		
SCALE	X.XX±.006(0.15)	.XX'±1'	DRAWN BY	JACOB	10/JUL/13	THIS DRAWING CONTAINS INFORMATION THAT IS PROPRIETARY TO TXGA INDUSTRIAL ELECTRONICS(S.Z)CO.,LTD AND SHOULD NOT BE USED WITHOUT WRITTEN PERMISSION			
5:1	X.XXX±.004(0.10)	.XXX'±0.5'							

REV	LOCATIONS	DESCRIPTION	DATE	REVISER	APPD

Circuits (n)	Part No.	Dimensions(in/mm)		Circuits (n)	Part No.	Dimensions(in/mm)	
		A	B			A	B
4	FFH12705-D04SXXX4K6X	-	.114(2.89)	44	FFH12705-D44SXXX4K6X	1.050(26.67)	1.114(28.29)
6	FFH12705-D06SXXX4K6X	.100(2.54)	.164(4.16)	46	FFH12705-D46SXXX4K6X	1.100(27.94)	1.164(29.56)
8	FFH12705-D08SXXX4K6X	.150(3.81)	.214(5.43)	48	FFH12705-D48SXXX4K6X	1.150(29.21)	1.214(30.83)
10	FFH12705-D10SXXX4K6X	.200(5.08)	.264(6.70)	50	FFH12705-D50SXXX4K6X	1.200(30.48)	1.264(32.10)
12	FFH12705-D12SXXX4K6X	.250(6.35)	.314(7.97)	52	FFH12705-D52SXXX4K6X	1.250(31.75)	1.314(33.37)
14	FFH12705-D14SXXX4K6X	.300(7.62)	.364(9.24)	54	FFH12705-D54SXXX4K6X	1.300(33.02)	1.364(34.64)
16	FFH12705-D16SXXX4K6X	.350(8.89)	.414(10.51)	56	FFH12705-D56SXXX4K6X	1.350(34.29)	1.414(35.91)
18	FFH12705-D18SXXX4K6X	.400(10.16)	.464(11.78)	58	FFH12705-D58SXXX4K6X	1.400(35.56)	1.464(37.18)
20	FFH12705-D20SXXX4K6X	.450(11.43)	.514(13.05)	60	FFH12705-D60SXXX4K6X	1.450(36.83)	1.514(38.45)
22	FFH12705-D22SXXX4K6X	.500(12.70)	.564(14.32)	62	FFH12705-D62SXXX4K6X	1.500(38.10)	1.564(39.72)
24	FFH12705-D24SXXX4K6X	.550(13.97)	.614(15.59)	64	FFH12705-D64SXXX4K6X	1.550(39.37)	1.614(40.99)
26	FFH12705-D26SXXX4K6X	.600(15.24)	.664(16.86)	66	FFH12705-D66SXXX4K6X	1.600(40.64)	1.664(42.26)
28	FFH12705-D28SXXX4K6X	.650(16.51)	.714(18.13)	68	FFH12705-D68SXXX4K6X	1.650(41.91)	1.714(43.53)
30	FFH12705-D30SXXX4K6X	.700(17.78)	.764(19.40)	70	FFH12705-D70SXXX4K6X	1.700(43.18)	1.764(44.80)
32	FFH12705-D32SXXX4K6X	.750(19.05)	.814(20.67)	72	FFH12705-D72SXXX4K6X	1.750(44.45)	1.814(46.07)
34	FFH12705-D34SXXX4K6X	.800(20.32)	.864(21.94)	74	FFH12705-D74SXXX4K6X	1.800(45.72)	1.864(47.34)
36	FFH12705-D36SXXX4K6X	.850(21.59)	.914(23.21)	76	FFH12705-D76SXXX4K6X	1.850(46.99)	1.914(48.61)
38	FFH12705-D38SXXX4K6X	.900(22.86)	.964(24.48)	78	FFH12705-D78SXXX4K6X	1.900(48.26)	1.964(49.88)
40	FFH12705-D40SXXX4K6X	.950(24.13)	1.014(25.75)	80	FFH12705-D80SXXX4K6X	1.950(49.53)	2.014(51.15)
42	FFH12705-D42SXXX4K6X	1.000(25.40)	1.064(27.02)				

 THIRD ANGLE PROJECTION	GENERAL TOLERANCES (UNLESS SPECIFIED)		APPROVE BY FRANK	DATE 10/JUL/13	PART NO. FFH12705-DXXSXXX4K6XX	ITEM NO. FFH12705	 Leader Of Industry	
	X.±.012(0.30)	X.'±5'	CHECKED BY CHERRY	DATE 10/JUL/13	TITLE Board to Board (Female Header) Pitch 1.27mm 180° Vertical (SMT)			REV 1
	DESIGN UNITS Inch (metric)	X.XX±.008(0.20)	X.'±2'	DRAWN BY JACOB	DATE 10/JUL/13	THIS DRAWING CONTAINS INFORMATION THAT IS PROPRIETARY TO TXGA INDUSTRIAL ELECTRONICS(S.Z)CO.,LTD AND SHOULD NOT BE USED WITHOUT WRITTEN PERMISSION		
	SCALE 5:1	SIZE A4	X.XX±.006(0.15)	X.'±1'	X.XX±.004(0.10)	X.'±0.5'		

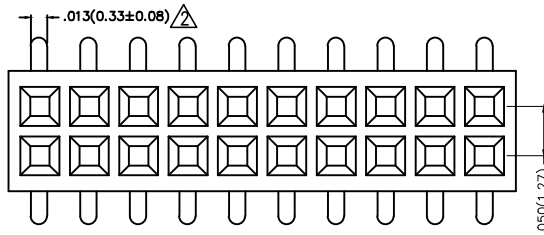
REV	LOCATIONS	DESCRIPTION	DATE	REVISER	APPD
1	▲	Part NO. FFH12704 Change to FFH12705A	20150901	CHERRY	FAN
2	▲	Size changes	08/JUL/20	KATE	CHERRY

Electrical

Current Rating: 1A AC(rms)/DC
Voltage Rating: 250V AC(rms)/DC
Contact Resistance: 20 mΩ Max
Insulation Resistance: 500 MΩ MIN
Withstanding Voltage: 100V AC r.m.s
Temperature Range-Operating: -25°C~+85°C

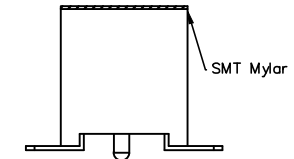
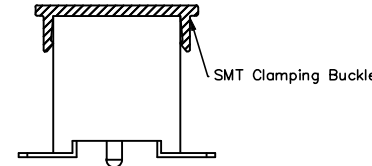
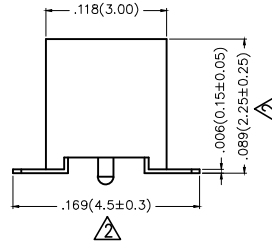
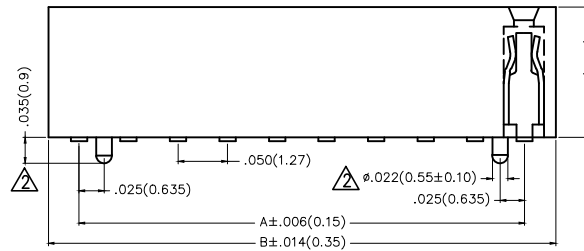
Material and Plating

Housing: PA6T(UL 94V-0)
Contact Pin: Brass
Plating: Gold Plated/Selective gold in contact area, tin on tail



Packing: M-Reel(With Cap)

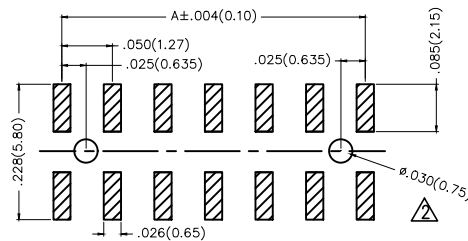
Packing: M1-Reel(With Mylar)



Ordering Information

FFH 127 05 — D XX S X XX 4 K6 XX A
1 2 3 4 5 6 7 8 9 10 11 12

1 Category FFH-Female Header	2 Series Number 127-Pitch1.27mm	3 Distinction No. 05	4 Row Option D-Double Row	5 Circuits XX	6 Entry Angle S-180° Vertical
7 Plating 1-Gold Plated 3-Selective gold in contact area, tin on tail	8 Thickness of Plating 00-Gold Flash 05-5μ" Custom plate available	9 Material-Resin 4-PA6T	10 Color-Resin K6-Black	11 Packaging M-Reel(With Cap) M1-Reel(With Mylar) K-Tray	12 Type A-With Position



Recommended P.C.Board Layout

THIRD ANGLE PROJECTION		GENERAL TOLERANCES (UNLESS SPECIFIED)		APPROVE BY	DATE	PART NO.	ITEM NO.	TXGA Leader Of Industry	
DESIGN UNITS Inch (metric)	X.X±.012(0.30)	X'.±5'	CHECKED BY	FRANK	10/SEP/15	FFH12705-DXXSXXX4K6XXA	FFH12705	REV 2	SHEET NO. 1/2
SCALE	X.XX±.008(0.20)	.X'±2'	DRAWN BY	CHERRY	01/SEP/15	TITLE	Board to Board (Female Header) Pitch 1.27mm 180° Vertical (SMT)		
SIZE	X.XX±.006(0.15)	.XX'±1'	JACOB	JACOB	01/SET/15	THIS DRAWING CONTAINS INFORMATION THAT IS PROPRIETARY TO TXGA INDUSTRIAL ELECTRONICS(S.Z)CO.,LTD AND SHOULD NOT BE USED WITHOUT WRITTEN PERMISSION			
5:1	X.XXX±.004(0.10)	.XXX'±0.5'							

1 2 3 4 5 6 7 8

REV	LOCATIONS	DESCRIPTION	DATE	REVISER	APPD

A

A

B

B

C

C

D

D



E

E

F

F

Circuits (n)	Part No.	Dimensions(in/mm)		Circuits (n)	Part No.	Dimensions(in/mm)	
		A	B			A	B
6	FFH12705-D06SXXX4K6XA	.100(2.54)	.164(4.16)	44	FFH12705-D44SXXX4K6XA	1.050(26.67)	1.114(28.29)
8	FFH12705-D08SXXX4K6XA	.150(3.81)	.214(5.43)	46	FFH12705-D46SXXX4K6XA	1.100(27.94)	1.164(29.56)
10	FFH12705-D10SXXX4K6XA	.200(5.08)	.264(6.70)	48	FFH12705-D48SXXX4K6XA	1.150(29.21)	1.214(30.83)
12	FFH12705-D12SXXX4K6XA	.250(6.35)	.314(7.97)	50	FFH12705-D50SXXX4K6XA	1.200(30.48)	1.264(32.10)
14	FFH12705-D14SXXX4K6XA	.300(7.62)	.364(9.24)	52	FFH12705-D52SXXX4K6XA	1.250(31.75)	1.314(33.37)
16	FFH12705-D16SXXX4K6XA	.350(8.89)	.414(10.51)	54	FFH12705-D54SXXX4K6XA	1.300(33.02)	1.364(34.64)
18	FFH12705-D18SXXX4K6XA	.400(10.16)	.464(11.78)	56	FFH12705-D56SXXX4K6XA	1.350(34.29)	1.414(35.91)
20	FFH12705-D20SXXX4K6XA	.450(11.43)	.514(13.05)	58	FFH12705-D58SXXX4K6XA	1.400(35.56)	1.464(37.18)
22	FFH12705-D22SXXX4K6XA	.500(12.70)	.564(14.32)	60	FFH12705-D60SXXX4K6XA	1.450(36.83)	1.514(38.45)
24	FFH12705-D24SXXX4K6XA	.550(13.97)	.614(15.59)	62	FFH12705-D62SXXX4K6XA	1.500(38.10)	1.564(39.72)
26	FFH12705-D26SXXX4K6XA	.600(15.24)	.664(16.86)	64	FFH12705-D64SXXX4K6XA	1.550(39.37)	1.614(40.99)
28	FFH12705-D28SXXX4K6XA	.650(16.51)	.714(18.13)	66	FFH12705-D66SXXX4K6XA	1.600(40.64)	1.664(42.26)
30	FFH12705-D30SXXX4K6XA	.700(17.78)	.764(19.40)	68	FFH12705-D68SXXX4K6XA	1.650(41.91)	1.714(43.53)
32	FFH12705-D32SXXX4K6XA	.750(19.05)	.814(20.67)	70	FFH12705-D70SXXX4K6XA	1.700(43.18)	1.764(44.80)
34	FFH12705-D34SXXX4K6XA	.800(20.32)	.864(21.94)	72	FFH12705-D72SXXX4K6XA	1.750(44.45)	1.814(46.07)
36	FFH12705-D36SXXX4K6XA	.850(21.59)	.914(23.21)	74	FFH12705-D74SXXX4K6XA	1.800(45.72)	1.864(47.34)
38	FFH12705-D38SXXX4K6XA	.900(22.86)	.964(24.48)	76	FFH12705-D76SXXX4K6XA	1.850(46.99)	1.914(48.61)
40	FFH12705-D40SXXX4K6XA	.950(24.13)	1.014(25.75)	78	FFH12705-D78SXXX4K6XA	1.900(48.26)	1.964(49.88)
42	FFH12705-D42SXXX4K6XA	1.000(25.40)	1.064(27.02)	80	FFH12705-D80SXXX4K6XA	1.950(49.53)	2.014(51.15)

 THIRD ANGLE PROJECTION	GENERAL TOLERANCES (UNLESS SPECIFIED)		APPROVE BY FRANK	DATE 10/SEP/15	PART NO. FFH12705-DXXSXXX4K6XXA	ITEM NO. FFH12705	 Leader Of Industry		
	X.±.012(0.30)	X.±5'	CHECKED BY CHERRY	DATE 01/SEP/15	TITLE Board to Board (Female Header) Pitch 1.27mm 180° Vertical (SMT)			REV 2	SHEET NO. 2/2
	DESIGN UNITS Inch (metric)	X.X±.008(0.20)	X.±2'	DRAWN BY JACOB	DATE 01/SET/15	THIS DRAWING CONTAINS INFORMATION THAT IS PROPRIETARY TO TXGA INDUSTRIAL ELECTRONICS(S.Z)CO.,LTD AND SHOULD NOT BE USED WITHOUT WRITTEN PERMISSION			
	SCALE 5:1	SIZE A4	X.XX±.006(0.15)	X.XX±1"	X.XXX±.004(0.10)	X.XX±0.5'			

1 2 3 4 5 6 7 8

X-ON Electronics

Largest Supplier of Electrical and Electronic Components

Click to view similar products for [Headers & Wire Housings](#) category:

Click to view products by [TXGA](#) manufacturer:

Other Similar products are found below :

[57102-F02-18ULF](#) [58102-G61-06LF](#) [0009485154](#) [009176003701906](#) [0050291907](#) [00-9021-0611-00-339](#) [02.125.8002.8](#) [609-3404](#) [61062-3](#)
[622-0430](#) [622-3653LF](#) [63453-116](#) [636-1030](#) [636-1427](#) [636-3427](#) [636-4007](#) [641938-9](#) [644827-2](#) [65495-038](#) [65692-001LF](#) [65781-018](#)
[65781-047](#) [65817-010LF](#) [65817-015LF](#) [66207-023LF](#) [67016-026LF](#) [67095-007LF](#) [68631-112](#) [68645-018](#) [68648-049](#) [699319-000](#)
[70.362.1628.0](#) [70-4210](#) [70-4226B](#) [70-4853B](#) [707-5020](#) [707-5028](#) [71.350.2428.0](#) [71961-016LF](#) [733-134](#) [754199-000](#) [760-3052](#) [787-8014-00](#)
[FCN-367T-T012/H](#) [80.063.4001.1](#) [800-90-001-10-001000](#) [800-90-010-10-002000](#) [801-43-002-10-013000](#) [801-43-006-10-002000](#)
[803-41-018-10-001000](#)