

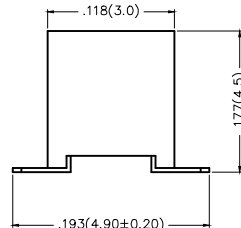
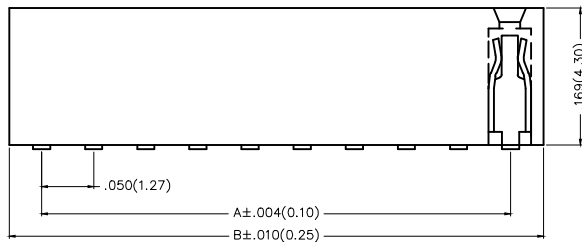
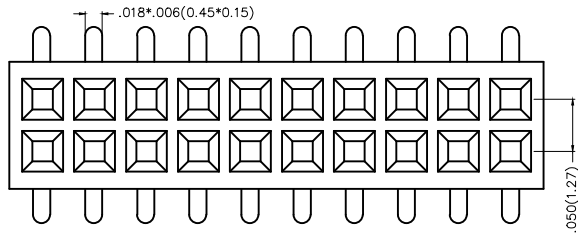
REV	LOCATIONS	DESCRIPTION	DATE	REVISER	APPD

**Electrical**

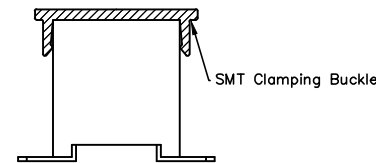
Current Rating: 1A AC(rms)/DC  
Voltage Rating: 250V AC(rms)/DC  
Contact Resistance: 20 m Ω Max  
Insulation Resistance: 500 M Ω MIN  
Withstanding Voltage: 100V AC r.m.s  
Temperature Range—Operating: -25°C~+85°C

**Material and Plating**

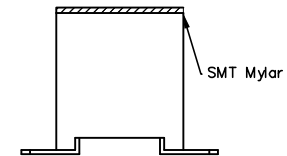
Housing: LCP/PA6T( UL 94V-0)  
Contact Pin: Brass  
Plating: Gold Plated/Selective gold in contact area, tin on tail



Packing: M—Reel(With Cap)



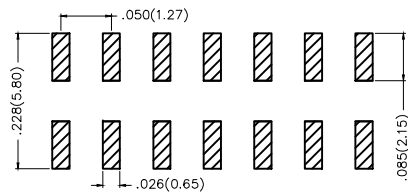
Packing: M1—Reel(With Mylar)



**Ordering Information**

FFH 127 13 — D XX S X XX X K6 XX  
1 2 3 4 5 6 7 8 9 10 11

- 1 Category: FFH—Female Header
- 2 Series Number: 127—Pitch1.27mm
- 3 Distinction No.: 13
- 4 Row Option: D—Double Row
- 5 Circuits: XX
- 6 Entry Angle: S—180° Vertical
- 7 Plating: 1—Gold Plated, 3—Selective gold in contact area, tin on tail
- 8 Thickness of Plating: 00—Gold Flash, 05—5μ", Custom plate available
- 9 Material—Resin: 3—LCP, 4—PA6T, 5—PA9T
- 10 Color—Resin: K6—Black
- 11 Packaging: M—Reel(With Cap), M1—Reel(With Mylar), L—Tube





Recommended P.C.Board Layout

 THIRD ANGLE PROJECTION	GENERAL TOLERANCES (UNLESS SPECIFIED)		APPROVE BY FRANK	DATE 10/JUL/13	PART NO. FFH12713-DXXSXXXXK6XX	ITEM NO. FFH12713	 Leader Of Industry	
	DESIGN UNITS Inch (metric)	X±.012(0.30) X.X±.010(0.25) X.XX±.008(0.20) X.XXX±.004(0.10)	.X'±5' .X'±2' .XX'±1' .XXX'±0.5'	CHECKED BY CHERRY	DATE 10/JUL/13	TITLE Board to Board (Female Header) Pitch 1.27mm 180° Vertical (SMT)		REV 0
SCALE 5:1	SIZE A4	DRAWN BY JACOB		DATE 10/JUL/13	THIS DRAWING CONTAINS INFORMATION THAT IS PROPRIETARY TO TXGA INDUSTRIAL ELECTRONICS(S.Z)CO.,LTD AND SHOULD NOT BE USED WITHOUT WRITTEN PERMISSION			

REV	LOCATIONS	DESCRIPTION	DATE	REVISER	APPD

Circuits (n)	Part No.	Dimensions(in/mm)		Circuits (n)	Part No.	Dimensions(in/mm)	
		A	B			A	B
6	FFH12713-D06SXXXXK6XX	.100(2.54)	.164(4.16)	54	FFH12713-D54SXXXXK6XX	1.300(33.02)	1.364(34.64)
8	FFH12713-D08SXXXXK6XX	.150(3.81)	.214(5.43)	56	FFH12713-D56SXXXXK6XX	1.350(34.29)	1.414(35.91)
10	FFH12713-D10SXXXXK6XX	.200(5.08)	.264(6.70)	58	FFH12713-D58SXXXXK6XX	1.400(35.56)	1.464(37.18)
12	FFH12713-D12SXXXXK6XX	.250(6.35)	.314(7.97)	60	FFH12713-D60SXXXXK6XX	1.450(36.83)	1.514(38.45)
14	FFH12713-D14SXXXXK6XX	.300(7.62)	.364(9.24)	62	FFH12713-D62SXXXXK6XX	1.500(38.10)	1.564(39.72)
16	FFH12713-D16SXXXXK6XX	.350(8.89)	.414(10.51)	64	FFH12713-D64SXXXXK6XX	1.550(39.37)	1.614(40.99)
18	FFH12713-D18SXXXXK6XX	.400(10.16)	.464(11.78)	66	FFH12713-D66SXXXXK6XX	1.600(40.64)	1.664(42.26)
20	FFH12713-D20SXXXXK6XX	.450(11.43)	.514(13.05)	68	FFH12713-D68SXXXXK6XX	1.650(41.91)	1.714(43.53)
22	FFH12713-D22SXXXXK6XX	.500(12.70)	.564(14.32)	70	FFH12713-D70SXXXXK6XX	1.700(43.18)	1.764(44.80)
24	FFH12713-D24SXXXXK6XX	.550(13.97)	.614(15.59)	72	FFH12713-D72SXXXXK6XX	1.750(44.45)	1.814(46.07)
26	FFH12713-D26SXXXXK6XX	.600(15.24)	.664(16.86)	74	FFH12713-D74SXXXXK6XX	1.800(45.72)	1.864(47.34)
28	FFH12713-D28SXXXXK6XX	.650(16.51)	.714(18.13)	76	FFH12713-D76SXXXXK6XX	1.850(46.99)	1.914(48.61)
30	FFH12713-D30SXXXXK6XX	.700(17.78)	.764(19.40)	78	FFH12713-D78SXXXXK6XX	1.900(48.26)	1.964(49.88)
32	FFH12713-D32SXXXXK6XX	.750(19.05)	.814(20.67)	80	FFH12713-D80SXXXXK6XX	1.950(49.53)	2.014(51.55)
34	FFH12713-D34SXXXXK6XX	.800(20.32)	.864(21.94)	82	FFH12713-D82SXXXXK6XX	2.000(50.80)	2.064(52.42)
36	FFH12713-D36SXXXXK6XX	.850(21.59)	.914(23.21)	84	FFH12713-D84SXXXXK6XX	2.050(52.07)	2.114(53.69)
38	FFH12713-D38SXXXXK6XX	.900(22.86)	.964(24.48)	86	FFH12713-D86SXXXXK6XX	2.100(53.34)	2.164(54.69)
40	FFH12713-D40SXXXXK6XX	.950(24.13)	1.014(25.75)	88	FFH12713-D88SXXXXK6XX	2.150(54.61)	2.214(56.23)
42	FFH12713-D42SXXXXK6XX	1.000(25.40)	1.064(27.02)	90	FFH12713-D90SXXXXK6XX	2.200(55.88)	2.264(57.50)
44	FFH12713-D44SXXXXK6XX	1.050(26.67)	1.114(28.29)	92	FFH12713-D92SXXXXK6XX	2.250(57.15)	2.314(58.77)
46	FFH12713-D46SXXXXK6XX	1.100(27.94)	1.164(29.56)	94	FFH12713-D94SXXXXK6XX	2.300(58.42)	2.364(60.04)
48	FFH12713-D48SXXXXK6XX	1.150(29.21)	1.214(30.83)	96	FFH12713-D96SXXXXK6XX	2.350(59.69)	2.414(61.31)
50	FFH12713-D50SXXXXK6XX	1.200(30.48)	1.264(32.10)	98	FFH12713-D98SXXXXK6XX	2.400(60.96)	2.464(62.58)
52	FFH12713-D52SXXXXK6XX	1.250(31.75)	1.314(33.37)	100	FFH12713-D100SXXXXK6XX	2.450(62.23)	2.514(63.85)

 THIRD ANGLE PROJECTION	GENERAL TOLERANCES (UNLESS SPECIFIED)		APPROVE BY FRANK	DATE 10/JUL/13	PART NO. FFH12713-DXXSXXXXK6XX	ITEM NO. FFH12713	 Leader Of Industry	
	X.±.012(0.30)	X.'±5'	CHECKED BY CHERRY	DATE 10/JUL/13	TITLE Board to Board (Female Header) Pitch 1.27mm 180° Vertical (SMT)			REV 0
	DESIGN UNITS Inch (metric)	X.XX±.010(0.25)	.X'±2'	DRAWN BY JACOB	DATE 10/JUL/13	THIS DRAWING CONTAINS INFORMATION THAT IS PROPRIETARY TO TXGA INDUSTRIAL ELECTRONICS(S.Z)CO.,LTD AND SHOULD NOT BE USED WITHOUT WRITTEN PERMISSION		
	SCALE 5:1	SIZE A4	X.XX±.008(0.20)	.XX'±1'	X.XXX±.004(0.10)	.XXX'±0.5'		

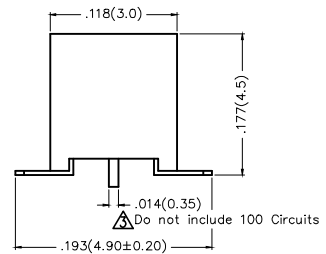
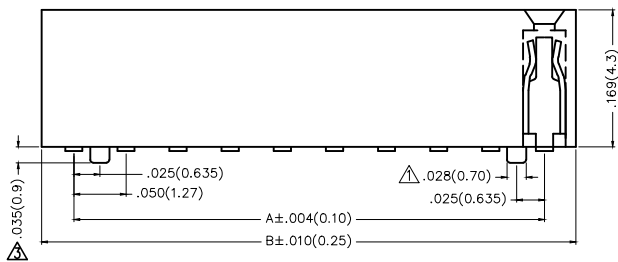
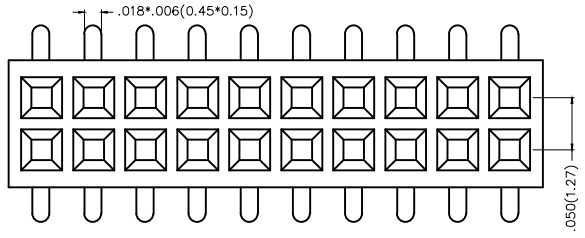
REV	LOCATIONS	DESCRIPTION	DATE	REVISER	APPD
1	△	Change the positioning column	02/June/15	KEVIN	FRANK
2	△	Part No. FFH12714 Change to FFH12713A	02/Sep/15	CHERRY	FRANK
3	△	Size changes	13/MAY/20	KATE	CHERRY

Electrical

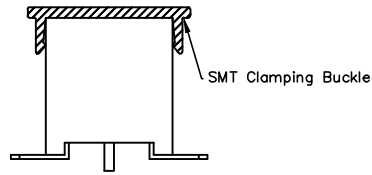
Current Rating: 1A AC(rms)/DC  
Voltage Rating: 250V AC(rms)/DC  
Contact Resistance: 20 m Ω Max  
Insulation Resistance: 500 M Ω MIN  
Withstanding Voltage: 100V AC r.m.s  
Temperature Range—Operating: -40°C~+105°C

Material and Plating

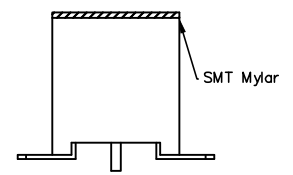
Housing: LCP/PA6T( UL 94V-0)  
Contact Pin: Brass  
Plating: Gold plated/ Selective gold plated on contact area and 120μ" Min. matte tin plated on tails area



Packing: M—Reel(With Cap)



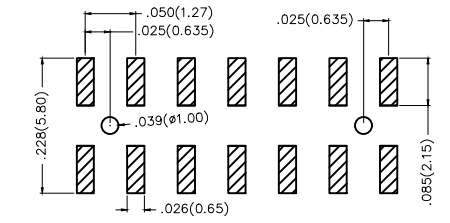
Packing: M1—Reel(With Mylar)



Ordering Information

FFH 127 13 — D XX S X XX 4 K6 XX A  
1 2 3 4 5 6 7 8 9 10 11 12

1	Category FFH—Female Header	2	Series Number 127—Pitch1.27mm	3	Distinction No. 13	4	Row Option D—Double Row	5	Circuits XX	6	Entry Angle S—180° Vertical
7	Plating 1—Gold plated 7—Selective gold plated on contact area and matte tin plated on tails area	8	Thickness of Plating 00—Gold Flash 05—5μ" Custom plate available	9	Material—Resin 3—LCP 4—PA6T 5—PA9T	10	Color—Resin K6—Black	11	Packaging M—Reel(With Cap) M1—Reel(With Mylar) L—Tube	12	Type A—With Position

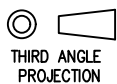



Recommended P.C.Board Layout

 THIRD ANGLE PROJECTION	GENERAL TOLERANCES (UNLESS SPECIFIED)		APPROVE BY FRANK	DATE 10/JUL/13	PART NO. △ FFH12713—DXXSXXX4K6XXA	ITEM NO. FFH12713	 Leader Of Industry
	X.±.012(0.30)	X'.±5'	CHECKED BY CHERRY	DATE 10/JUL/13	TITLE Board to Board (Female Header) Pitch 1.27mm 180° Vertical (SMT)	REV 3	
DESIGN UNITS Inch (metric)	X.X±.010(0.25)	X'.±2'	DRAWN BY JACOB	DATE 10/JUL/13	THIS DRAWING CONTAINS INFORMATION THAT IS PROPRIETARY TO TXGA INDUSTRIAL ELECTRONICS(S.Z)CO.,LTD AND SHOULD NOT BE USED WITHOUT WRITTEN PERMISSION		
SCALE 5:1	SIZE A4	X.XX±.008(0.20)					
		X.XXX±.004(0.10)					

REV	LOCATIONS	DESCRIPTION	DATE	REVISER	APPD

Circuits (n)	Part No. $\Delta$	Dimensions(in/mm)		Circuits (n)	Part No. $\Delta$	Dimensions(in/mm)	
		A	B			A	B
8	FFH12713-D08SXXXXK6XXA	.150(3.81)	.214(5.43)	46	FFH12713-D46SXXXXK6XXA	1.100(27.94)	1.164(29.56)
10	FFH12713-D10SXXXXK6XXA	.200(5.08)	.264(6.70)	48	FFH12713-D48SXXXXK6XXA	1.150(29.21)	1.214(30.83)
12	FFH12713-D12SXXXXK6XXA	.250(6.35)	.314(7.97)	50	FFH12713-D50SXXXXK6XXA	1.200(30.48)	1.264(32.10)
14	FFH12713-D14SXXXXK6XXA	.300(7.62)	.364(9.24)	52	FFH12713-D52SXXXXK6XXA	1.250(31.75)	1.314(33.37)
16	FFH12713-D16SXXXXK6XXA	.350(8.89)	.414(10.51)	54	FFH12713-D54SXXXXK6XXA	1.300(33.02)	1.364(34.64)
18	FFH12713-D18SXXXXK6XXA	.400(10.16)	.464(11.78)	56	FFH12713-D56SXXXXK6XXA	1.350(34.29)	1.414(35.91)
20	FFH12713-D20SXXXXK6XXA	.450(11.43)	.514(13.05)	58	FFH12713-D58SXXXXK6XXA	1.400(35.56)	1.464(37.18)
22	FFH12713-D22SXXXXK6XXA	.500(12.70)	.564(14.32)	60	FFH12713-D60SXXXXK6XXA	1.450(36.83)	1.514(38.45)
24	FFH12713-D24SXXXXK6XXA	.550(13.97)	.614(15.59)	62	FFH12713-D62SXXXXK6XXA	1.500(38.10)	1.564(39.72)
26	FFH12713-D26SXXXXK6XXA	.600(15.24)	.664(16.86)	64	FFH12713-D64SXXXXK6XXA	1.550(39.37)	1.614(40.99)
28	FFH12713-D28SXXXXK6XXA	.650(16.51)	.714(18.13)	66	FFH12713-D66SXXXXK6XXA	1.600(40.64)	1.664(42.26)
30	FFH12713-D30SXXXXK6XXA	.700(17.78)	.764(19.40)	68	FFH12713-D68SXXXXK6XXA	1.650(41.91)	1.714(43.53)
32	FFH12713-D32SXXXXK6XXA	.750(19.05)	.814(20.67)	70	FFH12713-D70SXXXXK6XXA	1.700(43.18)	1.764(44.80)
34	FFH12713-D34SXXXXK6XXA	.800(20.32)	.864(21.94)	72	FFH12713-D72SXXXXK6XXA	1.750(44.45)	1.814(46.07)
36	FFH12713-D36SXXXXK6XXA	.850(21.59)	.914(23.21)	74	FFH12713-D74SXXXXK6XXA	1.800(45.72)	1.864(47.34)
38	FFH12713-D38SXXXXK6XXA	.900(22.86)	.964(24.48)	76	FFH12713-D76SXXXXK6XXA	1.850(46.99)	1.914(48.61)
40	FFH12713-D40SXXXXK6XXA	.950(24.13)	1.014(25.75)	78	FFH12713-D78SXXXXK6XXA	1.900(48.26)	1.964(49.88)
42	FFH12713-D42SXXXXK6XXA	1.000(25.40)	1.064(27.02)	80	FFH12713-D80SXXXXK6XXA	1.950(49.53)	2.014(51.55)
44	FFH12713-D44SXXXXK6XXA	1.050(26.67)	1.114(28.29)	100	FFH12713-D100SXXXXK6XXA	2.450(62.23)	2.514(63.85)

 THIRD ANGLE PROJECTION	GENERAL TOLERANCES (UNLESS SPECIFIED)		APPROVE BY FRANK	DATE 10/JUL/13	PART NO. $\Delta$ FFH12713-DXXSXXX4K6XXA	ITEM NO. FFH12713	 Leader Of Industry	
	X.±.012(0.30)	X.±5'	CHECKED BY CHERRY	DATE 10/JUL/13	TITLE Board to Board (Female Header) Pitch 1.27mm 180° Vertical (SMT)	REV 3		SHEET NO. 2/2
	DESIGN UNITS Inch (metric)	X.XX±.010(0.25)	.X'±2'	DRAWN BY JACOB	DATE 10/JUL/13	THIS DRAWING CONTAINS INFORMATION THAT IS PROPRIETARY TO TXGA INDUSTRIAL ELECTRONICS(S.Z)CO.,LTD AND SHOULD NOT BE USED WITHOUT WRITTEN PERMISSION		
	SCALE 5:1	SIZE A4	X.XX±.008(0.20)	.XX'±1'	X.XXX±.004(0.10)	.XXX'±0.5'		

## X-ON Electronics

Largest Supplier of Electrical and Electronic Components

*Click to view similar products for [Headers & Wire Housings](#) category:*

*Click to view products by [TXGA](#) manufacturer:*

Other Similar products are found below :

[57102-F02-18ULF](#) [58102-G61-06LF](#) [582553-1](#) [009176003701906](#) [0050291907](#) [02.125.8002.8](#) [609-3404](#) [61062-3](#) [622-0430](#) [622-3653LF](#)  
[63453-116](#) [636-1030](#) [636-1427](#) [636-3427](#) [636-4007](#) [641938-9](#) [65495-038](#) [65692-001LF](#) [65781-018](#) [65781-047](#) [65817-010LF](#) [65817-015LF](#)  
[66207-023LF](#) [67016-026LF](#) [67095-007LF](#) [68631-112](#) [68645-018](#) [68648-049](#) [699319-000](#) [M90C108951C](#) [70.362.1628.0](#) [70-4210](#) [70-4226B](#)  
[70-4853B](#) [707-5020](#) [707-5028](#) [71.350.2428.0](#) [71961-016LF](#) [733-134](#) [754199-000](#) [760-3052](#) [787-8014-00](#) [FCN-367T-T012/H](#)  
[80.063.4001.1](#) [800-90-001-10-001000](#) [801-43-002-10-013000](#) [801-43-006-10-002000](#) [803-41-018-10-001000](#) [803-43-014-20-001000](#)  
[803-43-024-10-001000](#)