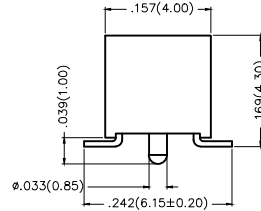
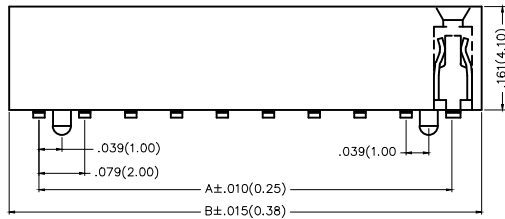
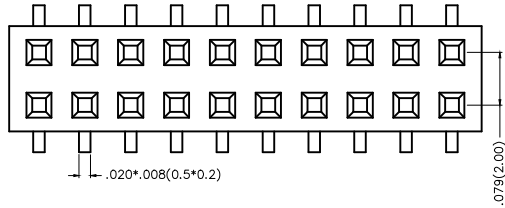


REV	LOCATIONS	DESCRIPTION	DATE	REVISER	APPD

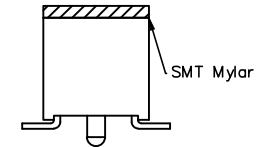
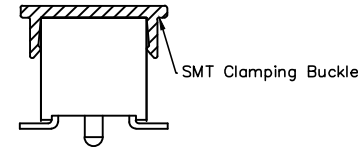
Electrical

Current Rating: 2A AC(rms)/DC  
Voltage Rating: 250V AC(rms)/DC  
Contact Resistance: 20 mΩ Max  
Insulation Resistance: 500 MΩ MIN  
Withstanding Voltage: 100V AC r.m.s  
Temperature Range—Operating: -25°C~+85°C  
Material and Plating  
Housing: PA6T( UL 94V-0)  
Contact Pin: Brass  
Plating: Gold Plated/Selective gold in contact area,  
matte(bright) tin on tail



Packing: M—Reel(With Cap)

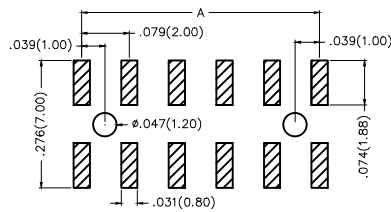
Packing: M1—Reel(With Mylar)



Ordering Information

FFH 200 04 — D XX S X XX 4 K6 XX  
1 2 3 4 5 6 7 8 9 10 11

1   <u>Category</u> FFH—Female Header	2   <u>Series Number</u> 200—Pitch2.0mm	3   <u>Distinction No.</u> 05	4   <u>Row Option</u> D—Double Row	5   <u>Circuits</u> XX	6   <u>Entry Angle</u> S—180° Vertical
7   <u>Plating</u> 1—Gold Plated 3—Selective gold in contact area, matte(bright) tin on tail	8   <u>Thickness of Plating</u> 00—Gold Flash 05—5μ" Custom plate available	9   <u>Material—Resin</u> 4—PA6T	10   <u>Color—Resin</u> K6—Black	11   <u>Packaging</u> M—Reel(With Cap) M1—Reel(With Mylar)	





Recommended P.C.Board Layout

 THIRD ANGLE PROJECTION	GENERAL TOLERANCES (UNLESS SPECIFIED) X.±.012(0.30) X.±5" X.X±.008(0.20) X.±2" X.XX±.006(0.15) .XX±1" X.XXX±.004(0.10) .XXX±0.5"		APPROVE BY FRANK CHECKED BY CHERRY DRAWN BY JACOB	DATE 23/JUL/13 DATE 23/JUL/13 DATE 23/JUL/13	PART NO. FFH20004-DXXSXXX4K6XX ITEM NO. FFH20004	 Leader Of Industry
	DESIGN UNITS Inch (metric) SCALE 5:1 SIZE A4	THIS DRAWING CONTAINS INFORMATION THAT IS PROPRIETARY TO TXGA INDUSTRIAL ELECTRONICS(S.Z)CO.,LTD AND SHOULD NOT BE USED WITHOUT WRITTEN PERMISSION	REV 0 SHEET NO. 1/1			

REV	LOCATIONS	DESCRIPTION	DATE	REVISER	APPD

Circuits (n)	Part No.	Dimensions(in/mm)		Circuits (n)	Part No.	Dimensions(in/mm)	
		A	B			A	B
4	FFH20004-D04SXXX4K6XX	.079(2.00)	.177(4.50)	44	FFH20004-D44SXXX4K6XX	1.654(42.00)	1.752(44.50)
6	FFH20004-D06SXXX4K6XX	.157(4.00)	.256(6.50)	46	FFH20004-D46SXXX4K6XX	1.732(44.00)	1.831(46.50)
8	FFH20004-D08SXXX4K6XX	.236(6.00)	.335(8.50)	48	FFH20004-D48SXXX4K6XX	1.811(46.00)	1.909(48.50)
10	FFH20004-D10SXXX4K6XX	.315(8.00)	.413(10.50)	50	FFH20004-D50SXXX4K6XX	1.890(48.00)	1.988(50.50)
12	FFH20004-D12SXXX4K6XX	.394(10.00)	.492(12.50)	52	FFH20004-D52SXXX4K6XX	1.969(50.00)	2.067(52.50)
14	FFH20004-D14SXXX4K6XX	.472(12.00)	.571(14.50)	54	FFH20004-D54SXXX4K6XX	2.047(52.00)	2.146(54.50)
16	FFH20004-D16SXXX4K6XX	.551(14.00)	.650(16.50)	56	FFH20004-D56SXXX4K6XX	2.126(54.00)	2.224(56.50)
18	FFH20004-D18SXXX4K6XX	.630(16.00)	.728(18.50)	58	FFH20004-D58SXXX4K6XX	2.205(56.00)	2.303(58.50)
20	FFH20004-D20SXXX4K6XX	.709(18.00)	.807(20.50)	60	FFH20004-D60SXXX4K6XX	2.283(58.00)	2.382(60.50)
22	FFH20004-D22SXXX4K6XX	.787(20.00)	.886(22.50)	62	FFH20004-D62SXXX4K6XX	2.362(60.00)	2.460(62.50)
24	FFH20004-D24SXXX4K6XX	.866(22.00)	.965(24.50)	64	FFH20004-D64SXXX4K6XX	2.441(62.00)	2.539(64.50)
26	FFH20004-D26SXXX4K6XX	.845(24.00)	1.043(26.50)	66	FFH20004-D66SXXX4K6XX	2.520(64.00)	2.618(66.50)
28	FFH20004-D28SXXX4K6XX	1.024(26.00)	1.122(28.50)	68	FFH20004-D68SXXX4K6XX	2.598(66.00)	2.697(68.50)
30	FFH20004-D30SXXX4K6XX	1.102(28.00)	1.201(30.50)	70	FFH20004-D70SXXX4K6XX	2.677(68.00)	2.776(70.50)
32	FFH20004-D32SXXX4K6XX	1.181(30.00)	1.280(32.50)	72	FFH20004-D72SXXX4K6XX	2.756(70.00)	2.854(72.50)
34	FFH20004-D34SXXX4K6XX	1.260(32.00)	1.358(34.50)	74	FFH20004-D74SXXX4K6XX	2.835(72.00)	2.933(74.50)
36	FFH20004-D36SXXX4K6XX	1.339(34.00)	1.437(36.50)	76	FFH20004-D76SXXX4K6XX	2.913(74.00)	3.012(76.50)
38	FFH20004-D38SXXX4K6XX	1.417(36.00)	1.516(38.50)	78	FFH20004-D78SXXX4K6XX	2.992(76.00)	3.091(78.50)
40	FFH20004-D40SXXX4K6XX	1.496(38.00)	1.594(40.50)	80	FFH20004-D80SXXX4K6XX	3.071(78.00)	3.169(80.50)
42	FFH20004-D42SXXX4K6XX	1.575(40.00)	1.673(42.50)				

 THIRD ANGLE PROJECTION	GENERAL TOLERANCES (UNLESS SPECIFIED)		APPROVE BY FRANK	DATE 23/JUL/13	PART NO. FFH20004-DXXSXXX4K6XX	ITEM NO. FFH20004	 Leader Of Industry	
	DESIGN UNITS Inch (metric)	X.X±.012(0.30)	X.±5'	CHECKED BY CHERRY	DATE 23/JUL/13	TITLE Board to Board (Female Header) Pitch 2.00mm 180° Vertical (SMT)		REV 0
SCALE 5:1	SIZE A4	X.XX±.006(0.15)	.XX±1'	DRAWN BY JACOB	DATE 23/JUL/13	THIS DRAWING CONTAINS INFORMATION THAT IS PROPRIETARY TO TXGA INDUSTRIAL ELECTRONICS(S.Z)CO.,LTD AND SHOULD NOT BE USED WITHOUT WRITTEN PERMISSION		

## X-ON Electronics

Largest Supplier of Electrical and Electronic Components

*Click to view similar products for [Headers & Wire Housings](#) category:*

*Click to view products by [TXGA](#) manufacturer:*

Other Similar products are found below :

[57102-F02-18ULF](#) [58102-G61-06LF](#) [0009485154](#) [009176003701906](#) [0050291907](#) [02.125.8002.8](#) [609-3404](#) [61062-3](#) [622-0430](#) [622-3653LF](#)  
[63453-116](#) [636-1030](#) [636-1427](#) [636-3427](#) [636-4007](#) [641938-9](#) [644827-2](#) [65495-038](#) [65692-001LF](#) [65781-018](#) [65781-047](#) [65817-010LF](#)  
[65817-015LF](#) [66207-023LF](#) [67016-026LF](#) [67095-007LF](#) [68631-112](#) [68645-018](#) [68648-049](#) [699319-000](#) [70.362.1628.0](#) [70-4210](#) [70-4226B](#)  
[70-4853B](#) [707-5020](#) [707-5028](#) [71.350.2428.0](#) [71961-016LF](#) [733-134](#) [754199-000](#) [760-3052](#) [787-8014-00](#) [FCN-367T-T012/H](#) [80.063.4001.1](#)  
[800-90-010-10-002000](#) [801-43-002-10-013000](#) [801-43-006-10-002000](#) [803-41-018-10-001000](#) [803-43-014-20-001000](#) [803-43-024-10-001000](#)