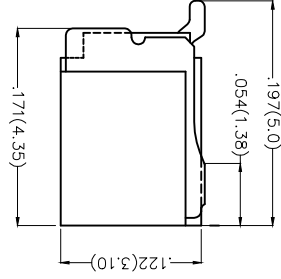
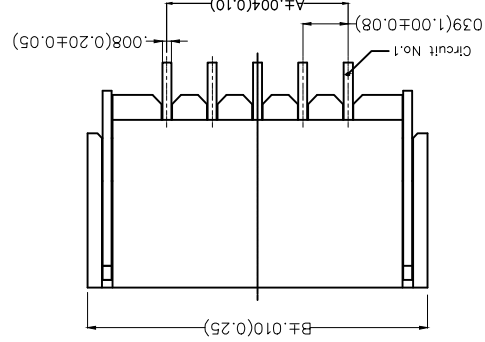
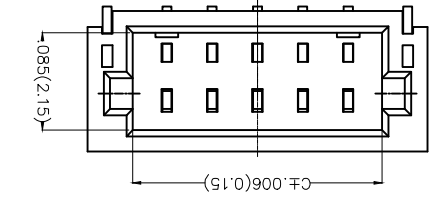
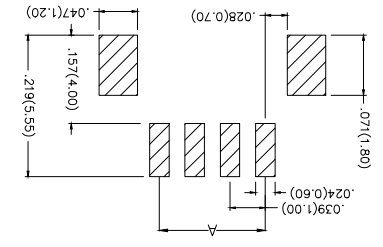


REV	LOCATIONS	DESCRIPTION	DATE	REVISER	APPD

Electrical
 Current Rating: 1A AC(rms)/DC
 Voltage Rating: 50V AC(rms)/DC
 Contact Resistance: 20 mΩ Max
 Insulation Resistance: 100 MΩ MIN
 Withstanding Voltage: 500V AC r.m.s
 Temperature Range—Operating: -25°C~+85°C
 Material and Plating
 Housing: PA9T (UL 94V-0)
 Contact Pin: Brass/ Tin plated
 Solder Tab: Copper alloy/ Tin plated



Recommended P.C.Board Layout



1	Category	FWF-Water	2	Series Number	100-Pitch:1.0mm
3	Distinction No.	01	4	Row Option	Single Row
5	Circuits	XX	6	Entry Angle	B-90° Angle
7	Plating	2-Tin Plated	8	Material-Resin	4-PA9T
9	Color-Resin	W5-White	10	Packaging	M-Reel

Ordering Information


1	FWF	100	01	-	S	XX	B	2	4	W5	M
2	100	01	3	01	4	XX	B	5	2	4	W5
3	100	01	4	01	5	XX	B	6	2	4	W5
4	100	01	5	01	6	XX	B	7	2	4	W5
5	100	01	6	01	7	XX	B	8	2	4	W5
6	100	01	7	01	8	XX	B	9	2	4	W5
7	100	01	8	01	9	XX	B	10	2	4	W5

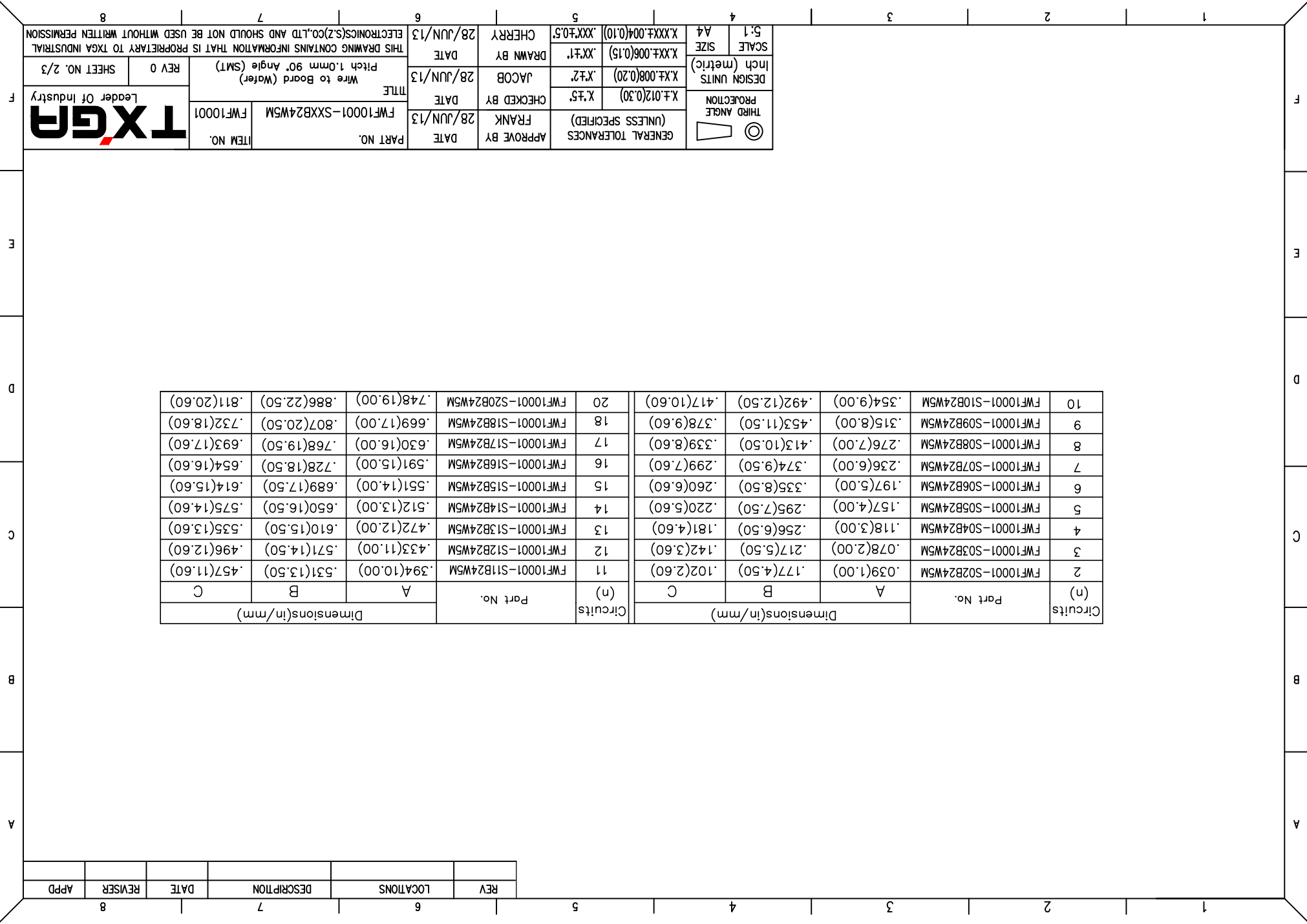
APPROVE BY	FRANK	DATE	28/JUN/13	PART NO.	FWF10001-SXXB24W5M	ITEM NO.	FWF10001
CHECKED BY	JACOB	DATE	28/JUN/13	TITLE	Wire to Board (Water)	REV	0
DRAWN BY	CHERRY	DATE	28/JUN/13	THIS DRAWING CONTAINS INFORMATION THAT IS PROPRIETARY TO TXGA INDUSTRIAL ELECTRONICS(SZ)CO.,LTD AND SHOULD NOT BE USED WITHOUT WRITTEN PERMISSION			
SCALE	5:1	SIZE	A4	GENERAL TOLERANCES (UNLESS SPECIFIED)			
DESIGN UNITS	Inch (metric)	X.XX±.008(0.20)	X.XX±.006(0.15)	X.XX±.004(0.10)	X.XX±.05	THIRD ANGLE PROJECTION	



REV	LOCATIONS	DESCRIPTION	DATE	REVISER	APPD

Circuits	Part No.	Dimensions(in/mm)							
		A	B	C					
2	FWF10001-S02B24W5M	.039(1.00)	.177(4.50)	.102(2.60)					
3	FWF10001-S03B24W5M	.078(2.00)	.217(5.50)	.142(3.60)					
4	FWF10001-S04B24W5M	.118(3.00)	.256(6.50)	.181(4.60)					
5	FWF10001-S05B24W5M	.157(4.00)	.295(7.50)	.220(5.60)					
6	FWF10001-S06B24W5M	.197(5.00)	.335(8.50)	.260(6.60)					
7	FWF10001-S07B24W5M	.236(6.00)	.374(9.50)	.299(7.60)					
8	FWF10001-S08B24W5M	.276(7.00)	.413(10.50)	.339(8.60)					
9	FWF10001-S09B24W5M	.315(8.00)	.453(11.50)	.378(9.60)					
10	FWF10001-S10B24W5M	.354(9.00)	.492(12.50)	.417(10.60)					
Circuits	Part No.	A	B	C	(n)	FWF10001-S11B24W5M	.394(10.00)	.531(13.50)	.457(11.60)
						FWF10001-S12B24W5M	.433(11.00)	.571(14.50)	.496(12.60)
						FWF10001-S13B24W5M	.472(12.00)	.610(15.50)	.535(13.60)
						FWF10001-S14B24W5M	.512(13.00)	.650(16.50)	.575(14.60)
						FWF10001-S15B24W5M	.551(14.00)	.689(17.50)	.614(15.60)
						FWF10001-S16B24W5M	.591(15.00)	.728(18.50)	.654(16.60)
						FWF10001-S17B24W5M	.630(16.00)	.768(19.50)	.693(17.60)
						FWF10001-S18B24W5M	.669(17.00)	.807(20.50)	.732(18.60)
						FWF10001-S20B24W5M	.748(19.00)	.886(22.50)	.811(20.60)

 THIRD ANGLE PROJECTION		GENERAL TOLERANCES (UNLESS SPECIFIED)	APPROVE BY FRANK	DATE 28/JUN/13	PART NO. FWF10001-SXXB24W5M	ITEM NO. FWF10001
DESIGN UNITS Inch (metric)	X.±.012(0.30)	X.±.5	CHECKED BY JACOB	DATE 28/JUN/13	TITLE Wire to Board (Water)	REV 0
SCALE 5:1 A4	X.XX±.006(0.15)	X.XX±.1	DRAWN BY CHERRY	DATE 28/JUN/13	PITCH 1.0mm 90° Angle (SMT)	SHEET NO. 2/3
THIS DRAWING CONTAINS INFORMATION THAT IS PROPRIETARY TO TXGA INDUSTRIAL ELECTRONICS(SZ)CO.,LTD AND SHOULD NOT BE USED WITHOUT WRITTEN PERMISSION						



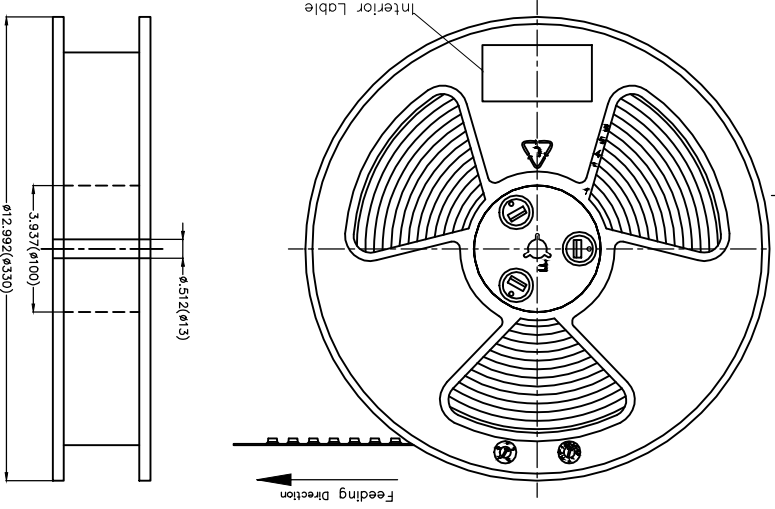
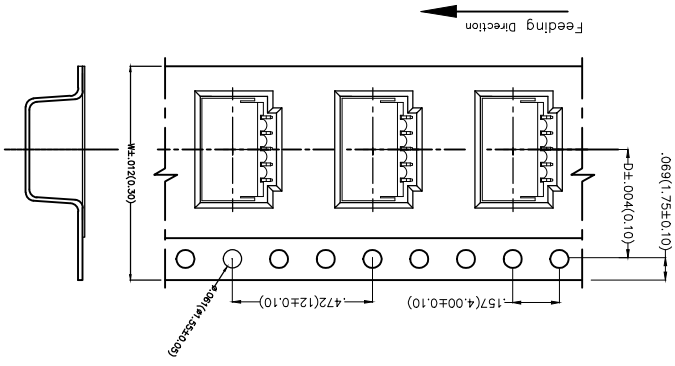
THIRD ANGLE	PROJECTION	DESIGN UNITS	SCALE
		Inch (metric)	5:1
		X.XX±.008(0.20)	A4
		X.XX±.006(0.15)	

GENERAL TOLERANCES (UNLESS SPECIFIED)	DATE	APPROVE BY
X.±.012(0.30)	28/JUN/13	FRANK
X.±.7	28/JUN/13	JACOB
X.XX±.004(0.10)	28/JUN/13	CHEERY

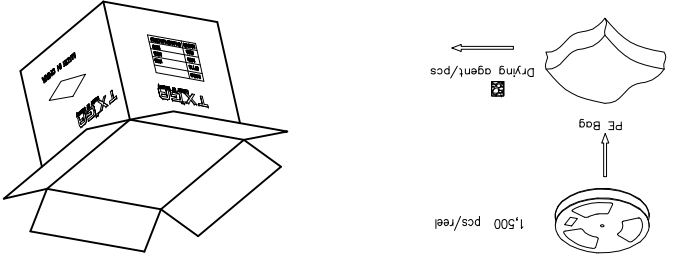
ITEM NO.	PART NO.	DATE	APPROVE BY
FWF10001	FWF10001-SXXB24WSM	28/JUN/13	FRANK
REV 0	WIRE TO BOARD (WATER) PITCH 1.0mm 90° ANGLE (SMT)	28/JUN/13	JACOB
SHEET NO. 3/3	TXGA	28/JUN/13	CHEERY



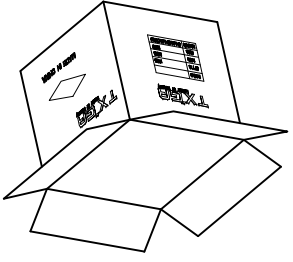
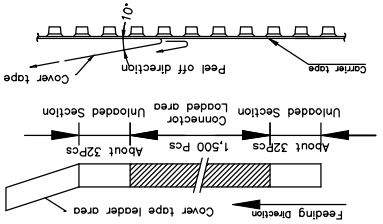
THIS DRAWING CONTAINS INFORMATION THAT IS PROPRIETARY TO TXGA INDUSTRIAL ELECTRONICS(SZ)CO.,LTD AND SHOULD NOT BE USED WITHOUT WRITTEN PERMISSION



Circuits	Dimensions(in/mm)	W	D	(n)
2	.295(7.50)	.630(16.00)	.453(11.50)	.945(24.00)
3	.295(7.50)	.630(16.00)	.453(11.50)	.945(24.00)
4	.295(7.50)	.630(16.00)	.453(11.50)	.945(24.00)
5	.295(7.50)	.630(16.00)	.453(11.50)	.945(24.00)
6	.295(7.50)	.630(16.00)	.453(11.50)	.945(24.00)
7	.295(7.50)	.630(16.00)	.453(11.50)	.945(24.00)
8	.295(7.50)	.630(16.00)	.453(11.50)	.945(24.00)
9	.295(7.50)	.630(16.00)	.453(11.50)	.945(24.00)
10	.453(11.50)	.945(24.00)	.630(16.00)	.798(20.20)
11	.453(11.50)	.945(24.00)	.630(16.00)	.798(20.20)



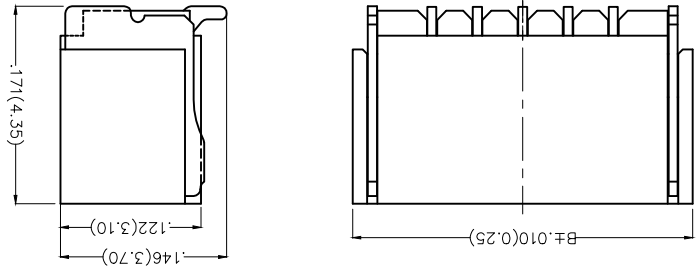
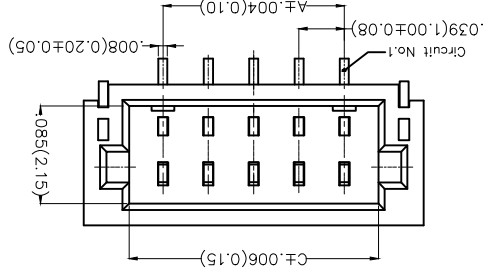
- Note:
- 10 sprocket hole cumulative tolerance±0.2
 - Carrier camber is within 1.0mm in 250mm
 - Material: White Conductive polystyrene Alloy 100% recyclable
 - All dimensions meet EIA-481-3 requirements
 - Peel off force of cover tape&carrier tape:20g~130g(0.2N~1.3N)
 - Component load per 13" reel: 1,500 pcs



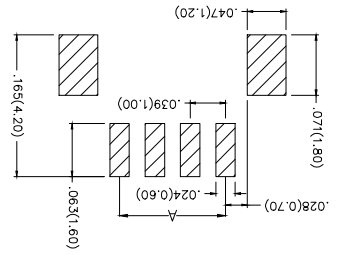
REV	LOCATIONS	DESCRIPTION	DATE	REVISER	APPD

REV	LOCATIONS	DESCRIPTION	DATE	REVISER	APPD

Electrical
 Current Rating: 1A AC(rms)/DC
 Voltage Rating: 50V AC(rms)/DC
 Contact Resistance: 20 mΩ Max
 Insulation Resistance: 100 MΩ MIN
 Withstanding Voltage: 500V AC r.m.s
 Temperature Range-Operating: -25°C~+85°C
 Material and Plating
 Housing: PA9T (UL 94V-0)
 Contact Pin: Brass/ Tin plated
 Solder Tab: Copper alloy/ Tin plated



Recommended P.C.Board Layout



Ordering Information

FWF 100 02 - S XX S 2 4 W5 M
 1 2 3 4 5 6 7 8 9 10

- 1 Category FWF-Wafer
- 2 Series Number 100-Pitch1.0mm
- 3 Distinction No. 02
- 4 Row Option Single Row
- 5 Circuits XX
- 6 Entry Angle S-180° Vertical
- 7 Plating 2-Tin Plated
- 8 Material-Resin 4-PA9T
- 9 Color-Resin W5-White
- 10 Packaging M-Reel

GENERAL TOLERANCES (UNLESS SPECIFIED)	APPROVE BY	DATE	PART NO.	ITEM NO.
X.±.012(0.30)	FRANK	28/JUN/13	FWF10002-SXXS24W5M	FWF10002
X.±.2	CHECKED BY	DATE	TITLE	
X.XX±.008(0.20)	JACOB	28/JUN/13	Wire to Board (Wafer)	
X.XX±.006(0.15)	DRAWN BY	DATE	Pitch 1.0mm 180° Vertical (SMT)	
X.XX±.004(0.10)	CHEERY	28/JUN/13	THIS DRAWING CONTAINS INFORMATION THAT IS PROPRIETARY TO TXGA INDUSTRIAL ELECTRONICS(SZ)CO.,LTD AND SHOULD NOT BE USED WITHOUT WRITTEN PERMISSION	
A4	SCALE	5:1	REV 0	SHEET NO. 1/3



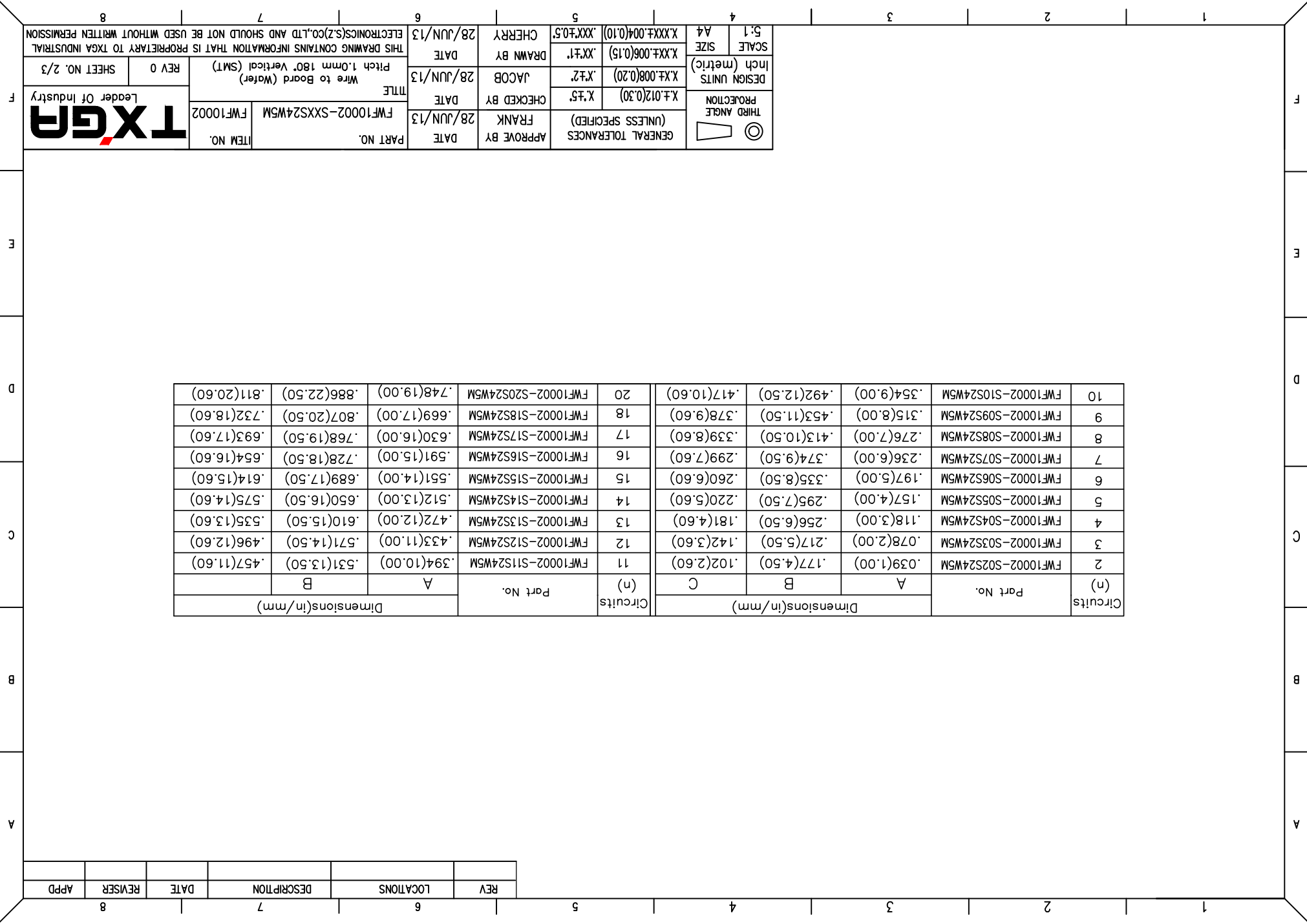
1 2 3 4 5 6 7 8

F E D C B A

REV	LOCATIONS	DESCRIPTION	DATE	REVISER	APPD

Circuits (n)	Part No.	Dimensions(in/mm)		
		A	B	C
2	FWF10002-S02S24W5M	.039(1.00)	.177(4.50)	.102(2.60)
3	FWF10002-S03S24W5M	.078(2.00)	.217(5.50)	.142(3.60)
4	FWF10002-S04S24W5M	.118(3.00)	.256(6.50)	.181(4.60)
5	FWF10002-S05S24W5M	.157(4.00)	.295(7.50)	.220(5.60)
6	FWF10002-S06S24W5M	.197(5.00)	.335(8.50)	.260(6.60)
7	FWF10002-S07S24W5M	.236(6.00)	.374(9.50)	.299(7.60)
8	FWF10002-S08S24W5M	.276(7.00)	.413(10.50)	.339(8.60)
9	FWF10002-S09S24W5M	.315(8.00)	.453(11.50)	.378(9.60)
10	FWF10002-S10S24W5M	.354(9.00)	.492(12.50)	.417(10.60)
Circuits (n)	Part No.	Dimensions(in/mm)		
		A	B	C
11	FWF10002-S11S24W5M	.394(10.00)	.531(13.50)	.457(11.60)
12	FWF10002-S12S24W5M	.433(11.00)	.571(14.50)	.496(12.60)
13	FWF10002-S13S24W5M	.472(12.00)	.610(15.50)	.535(13.60)
14	FWF10002-S14S24W5M	.512(13.00)	.650(16.50)	.575(14.60)
15	FWF10002-S15S24W5M	.551(14.00)	.689(17.50)	.614(15.60)
16	FWF10002-S16S24W5M	.591(15.00)	.728(18.50)	.654(16.60)
17	FWF10002-S17S24W5M	.630(16.00)	.768(19.50)	.693(17.60)
18	FWF10002-S18S24W5M	.669(17.00)	.807(20.50)	.732(18.60)
20	FWF10002-S20S24W5M	.748(19.00)	.886(22.50)	.811(20.60)

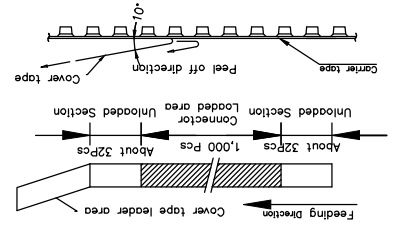
THIRD ANGLE PROJECTION		X.±.012(0.30)	X.±.5	DATE	28/JUN/13	APPROVE BY	FRANK	DATE	28/JUN/13	PART NO.	FWF10002-SXXS24W5M	ITEM NO.	FWF10002
DESIGN UNITS	Inch (metric)	X.±.008(0.20)	X.±.2	DATE	28/JUN/13	CHECKED BY	JACOB	DATE	28/JUN/13	TITLE	Wire to Board (Water)	REV 0	SHEET NO. 2/3
SCALE	5:1 A4	X.±.006(0.15)	X.±.1	DATE	28/JUN/13	DRAWN BY	CHEERY	DATE	28/JUN/13	THIS DRAWING CONTAINS INFORMATION THAT IS PROPRIETARY TO TXGA INDUSTRIAL ELECTRONICS(SZ)CO.,LTD AND SHOULD NOT BE USED WITHOUT WRITTEN PERMISSION			



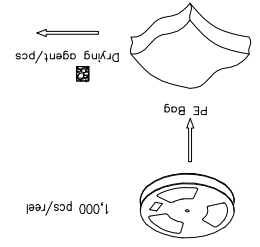
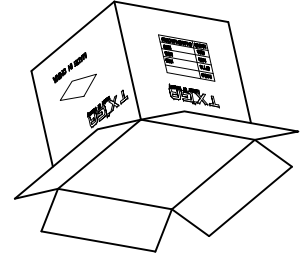
REV	LOCATIONS	DESCRIPTION	DATE	REVISER	APPD

Note:

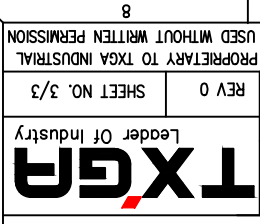
- 10 sprocket hole cumulative tolerance±0.2
- Carrier camber is within 1.0mm in 250mm
- Material: White Conductive polystyrene Alloy 100% recyclable
- All dimensions meet EIA-481-3 requirements
- Peel off force of cover tape&carrier tape:20g~130g(0.2N~1.3N)
- Component load per 13" reel: 1,000 pcs



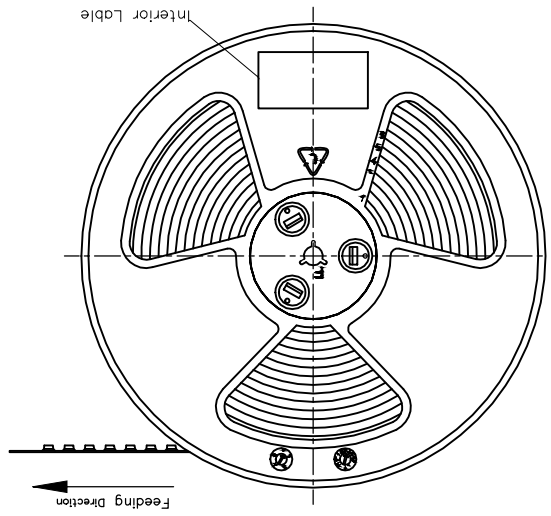
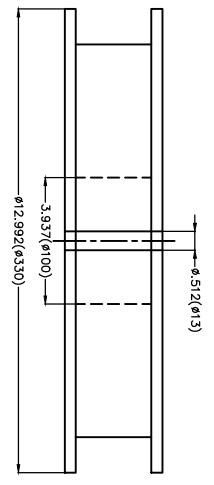
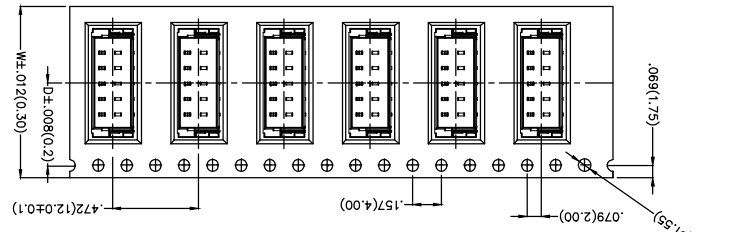
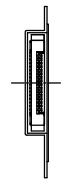
Circuits	Dimensions(in/mm)	
	D	W
(n)	D	W
2	.295(7.50)	.630(16.00)
3	.295(7.50)	.630(16.00)
4	.295(7.50)	.630(16.00)
5	.295(7.50)	.630(16.00)
6	.295(7.50)	.630(16.00)
7	.295(7.50)	.630(16.00)
8	.295(7.50)	.630(16.00)
9	.295(7.50)	.630(16.00)
10	.453(11.50)	.945(24.00)
11	.453(11.50)	.945(24.00)



THIRD ANGLE PROJECTION	DESIGN UNITS	SCALE	
	Inch (metric)	A4	5:1
GENERAL TOLERANCES (UNLESS SPECIFIED)	X.±.012(0.30)	X.XX±.006(0.15)	X.XXX±.004(0.10)
	X.±.5	X.±.1	X.XX±.05
APPROVE BY	DATE	DRAWN BY	DATE
FRANK	28/JUN/13	JACOB	28/JUN/13
CHECKED BY	DATE	WIRE TO BOARD (WATER)	PITCH
X.F.5	28/JUN/13	FWF10002-SXXS24WSM	1.0mm 180° Vertical (SMT)
ITEM NO.	FWF10002	REV 0	SHEET NO. 3/3

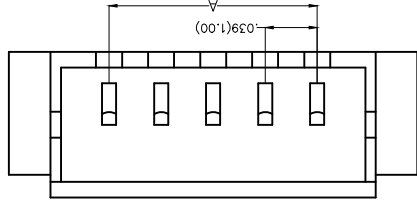
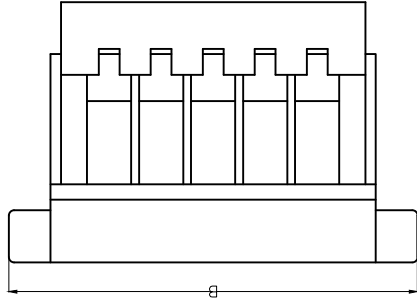
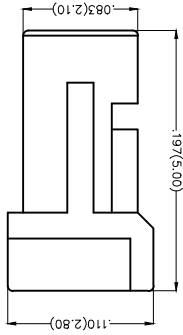


THIS DRAWING CONTAINS INFORMATION THAT IS PROPRIETARY TO TXGA INDUSTRIAL ELECTRONICS(SZ)CO.,LTD AND SHOULD NOT BE USED WITHOUT WRITTEN PERMISSION



REV	LOCATIONS	DESCRIPTION	DATE	REVISER	APPD

Electrical
 Temperature Range—Operating: -25°C~+85°C
 Material
 Housing: P466 (UL 94V-0)
 Applicable Terminal: FT10001
 Mates With: WF10001, WF10002 Series



Part No.	Dimensions(n/mm)	
	A	B
FHG10001-S02M2WB	.039(1.00)	.197(5.00)
FHG10001-S03M2WB	.078(2.00)	.236(6.00)
FHG10001-S04M2WB	.118(3.00)	.276(7.00)
FHG10001-S05M2WB	.157(4.00)	.315(8.00)
FHG10001-S06M2WB	.197(5.00)	.354(9.00)
FHG10001-S07M2WB	.236(6.00)	.394(10.00)
FHG10001-S08M2WB	.276(7.00)	.433(11.00)
FHG10001-S09M2WB	.315(8.00)	.472(12.00)
FHG10001-S10M2WB	.354(9.00)	.512(13.00)
FHG10001-S11M2WB	.394(10.00)	.551(14.00)
FHG10001-S12M2WB	.433(11.00)	.591(15.00)
FHG10001-S13M2WB	.472(12.00)	.630(16.00)
FHG10001-S14M2WB	.512(13.00)	.669(17.00)
FHG10001-S15M2WB	.551(14.00)	.709(18.00)
FHG10001-S16M2WB	.591(15.00)	.748(19.00)
FHG10001-S17M2WB	.630(16.00)	.787(20.00)
FHG10001-S18M2WB	.669(17.00)	.827(21.00)
FHG10001-S20M2WB	.748(19.00)	.906(23.00)

Ordering Information

FHG 100 01 - S XX M 2 W1 B

1 Category
 2 Series Number
 3 Distinction No.
 4 Row Option
 5 Single Row

6 Circuits
 7 Entry Type
 8 Material-Resin
 9 Color-Resin
 10 W1-White
 11 B-PE Bag
 12 Packaging



GENERAL TOLERANCES
 (UNLESS SPECIFIED)

APPROVE BY
 FRANK

DATE
 25/JUN/13

PART NO.
 FHG10001-SXXM2WB

ITEM NO.
 FHG10001



THIS DRAWING CONTAINS INFORMATION THAT IS PROPRIETARY TO TXGA INDUSTRIAL ELECTRONICS(SZ)CO.,LTD AND SHOULD NOT BE USED WITHOUT WRITTEN PERMISSION

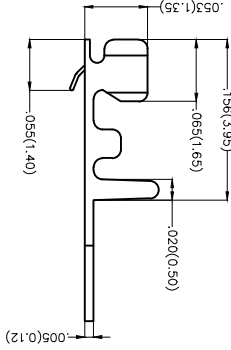
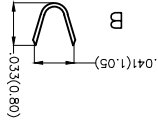
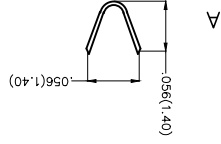
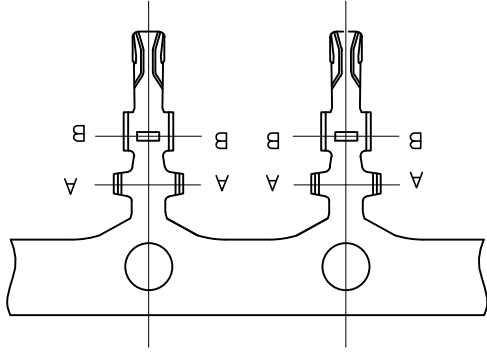
DATE
 25/JUN/13

DRAWN BY
 JACOB

SCALE
 5:1

DESIGN UNITS
 Inch (metric)

PROJECTION
 THIRD ANGLE



Electrical
 Material: Phosphor Bronze C5191
 All Corners and Radll Have a Maximum
 Radius of 0.1mm unless Otherwise Specified
 Plating: Tin-Plated
 Wire Range: 32AWG~28AWG
 Applicable Housing: FHG10001 Series
 Minimum Order Quantity: 20,000 PCS

REV	LOCATIONS	DESCRIPTION	DATE	REVISER	APPD

 THIRD ANGLE PROJECTION	X.F.012(0.30) X.X±.008(0.20) X.X±.006(0.15)	X.F.5. X.X±1. X.XX±.004(0.10)	GENERAL TOLERANCES (UNLESS SPECIFIED)	APPROVE BY FRANK	DATE 25/JUN/13	PART NO. FT10001-F2H	ITEM NO. FT10001	TITLE Wire to Board Pitch 1.0mm(Terminal)	REV 0 SHEET NO. 1/2	THIS DRAWING CONTAINS INFORMATION THAT IS PROPRIETARY TO TXGA INDUSTRIAL ELECTRONICS(SZ)CO.,LTD AND SHOULD NOT BE USED WITHOUT WRITTEN PERMISSION
	DESIGN UNITS Inch (metric)	SCALE SIZE 5:1 A4	DRAWN BY CHERRY	DATE 25/JUN/13	CHECKED BY JACOB	DATE 25/JUN/13	DRAWN BY CHERRY	DATE 25/JUN/13	REV 0 SHEET NO. 1/2	THIS DRAWING CONTAINS INFORMATION THAT IS PROPRIETARY TO TXGA INDUSTRIAL ELECTRONICS(SZ)CO.,LTD AND SHOULD NOT BE USED WITHOUT WRITTEN PERMISSION

TXGA
 Leader Of Industry

REV	LOCATIONS	DESCRIPTION	DATE	REVISER	APPD

A

B

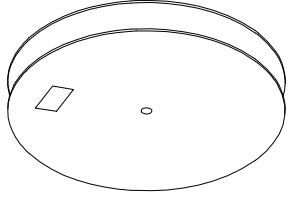
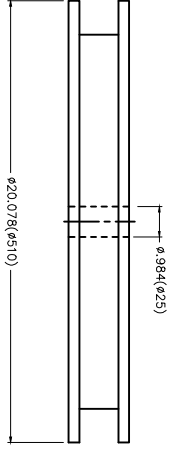
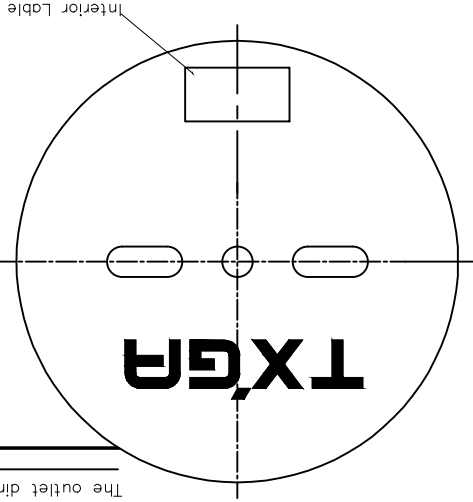
C

D

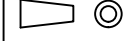
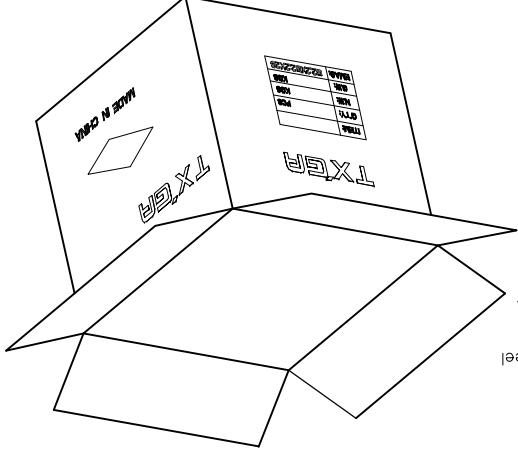
E

F

The outlet direction



20,000Pcs/Reel



THIRD ANGLE PROJECTION

GENERAL TOLERANCES (UNLESS SPECIFIED)

APPROVE BY FRANK

DATE 25/JUN/13

PART NO. FT10001-F2H

ITEM NO. FT10001

CHECKED BY JACOB

DATE 25/JUN/13

TITLE Wire to Board Pitch 1.0mm(Terminal)

REV 0

SHEET NO. 2/2

DESIGN UNITS Inch (metric)

SCALE 5:1

A4 SIZE

X.XX±.004(0.10)

.XX±.1

DRAWN BY CHERRY

DATE 25/JUN/13

THIS DRAWING CONTAINS INFORMATION THAT IS PROPRIETARY TO TXGA INDUSTRIAL ELECTRONICS(SZ)CO.,LTD AND SHOULD NOT BE USED WITHOUT WRITTEN PERMISSION



A

B

C

D

E

F

1

2

3

4

5

6

7

8

X-ON Electronics

Largest Supplier of Electrical and Electronic Components

Click to view similar products for [Headers & Wire Housings](#) category:

Click to view products by [TXGA](#) manufacturer:

Other Similar products are found below :

[95000-104TRLF](#) [10135584-644402LF](#) [DF62W-EP2022PCA](#) [95000-106TRLF](#) [DF62W-2022SCA](#) [DF62W-EP2022PC](#) [2203348](#) [DF62W-2022SC](#) [1084018](#) [1029039](#) [1084017](#) [802-10-012-10-002000](#) [1112640](#) [1112639](#) [891-007-9SS-BST1T](#) [000-34000](#) [0008550134](#) [0009482033](#) [0009507031](#) [57102-F02-18ULF](#) [57102-S06-03LF](#) [57202-S52-04LF](#) [PCN6-15S-2.5E](#) [0039019024](#) [58102-G61-06LF](#) [582553-1](#) [0009485154](#) [0009508121](#) [0022285053](#) [0050291907](#) [018731A](#) [LY20-4P-DT1-P1E-BR](#) [02.125.8002.8](#) [60101931](#) [60598-1 \(Cut Strip\)](#) [M1625-3R/100](#) [61062-3](#) [61082-181009](#) [CSU011177004](#) [636-1427](#) [638009-1](#) [641938-9](#) [641991-4](#) [644168-1](#) [644827-2](#) [647662-1](#) [65039-019ELF](#) [65692-001LF](#) [65781-018](#) [65781-047](#)