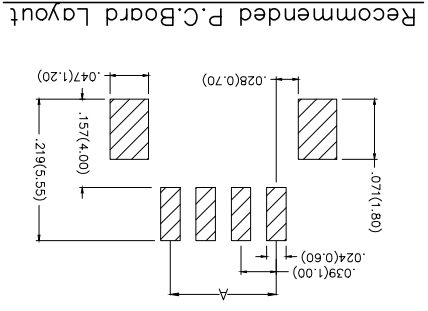
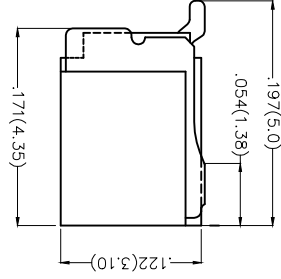
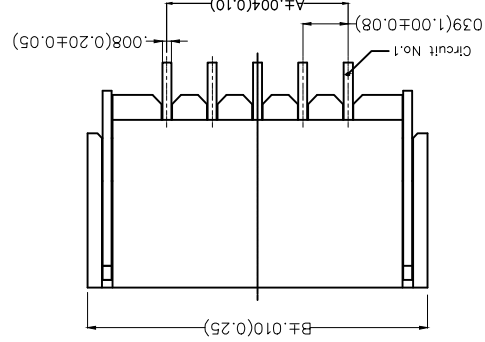
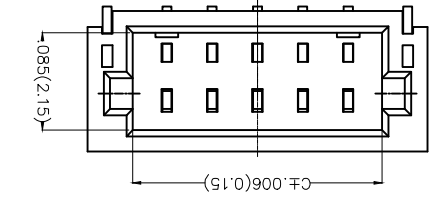


REV	LOCATIONS	DESCRIPTION	DATE	REVISER	APPD

Electrical
 Current Rating: 1A AC(rms)/DC
 Voltage Rating: 50V AC(rms)/DC
 Contact Resistance: 20 mΩ Max
 Insulation Resistance: 100 MΩ MIN
 Withstanding Voltage: 500V AC r.m.s
 Temperature Range—Operating: -25°C~+85°C
 Material and Plating
 Housing: PA9T (UL 94V-0)
 Contact Pin: Brass/ Tin plated
 Solder Tab: Copper alloy/ Tin plated



Recommended P.C.Board Layout

1	Category	FWF-Water	2	Series Number	100-Pitch:1.0mm
3	Distinction No.	01	3	Material-Resin	4-PA9T
4	Row Option	Single Row	9	Color-Resin	W5-White
5	Circuits	XX	10	Packaging	M-Reel
6	Entry Angle	B-90° Angle	7	Plating	2-Tin Plated

Ordering Information

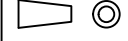
FWF	100	01	-	S	XX	B	2	4	W5	M
	1	2	3	4	5	6	7	8	9	10

APPROVE BY	FRANK	DATE	28/JUN/13	PART NO.	FWF10001-SXXB24W5M	ITEM NO.	FWF10001
CHECKED BY	JACOB	DATE	28/JUN/13	TITLE	Wire to Board (Water) Pitch 1.0mm 90° Angle (SMT)	REV	0
DRAWN BY	CHERRY	DATE	28/JUN/13	THIS DRAWING CONTAINS INFORMATION THAT IS PROPRIETARY TO TXGA INDUSTRIAL ELECTRONICS(SZ)CO.,LTD AND SHOULD NOT BE USED WITHOUT WRITTEN PERMISSION			
SCALE	5:1	SIZE	A4	GENERAL TOLERANCES (UNLESS SPECIFIED)			
DESIGN UNITS	Inch (metric)	X.XX±.008(0.20)	X.XX±.006(0.15)	X.XX±.004(0.10)	X.XX±.05	THIRD ANGLE PROJECTION	



REV	LOCATIONS	DESCRIPTION	DATE	REVISER	APPD

Circuits	Part No.	Dimensions(in/mm)			Circuits	Part No.	Dimensions(in/mm)		
		A	B	C			A	B	C
2	FWF10001-S02B24W5M	.039(1.00)	.177(4.50)	.102(2.60)	11	FWF10001-S1B24W5M	.594(10.00)	.531(13.50)	.457(11.60)
3	FWF10001-S03B24W5M	.078(2.00)	.217(5.50)	.142(3.60)	12	FWF10001-S12B24W5M	.433(11.00)	.571(14.50)	.496(12.60)
4	FWF10001-S04B24W5M	.118(3.00)	.256(6.50)	.181(4.60)	13	FWF10001-S13B24W5M	.472(12.00)	.610(15.50)	.535(13.60)
5	FWF10001-S05B24W5M	.157(4.00)	.295(7.50)	.220(5.60)	14	FWF10001-S14B24W5M	.512(13.00)	.650(16.50)	.575(14.60)
6	FWF10001-S06B24W5M	.197(5.00)	.335(8.50)	.260(6.60)	15	FWF10001-S15B24W5M	.551(14.00)	.689(17.50)	.614(15.60)
7	FWF10001-S07B24W5M	.236(6.00)	.374(9.50)	.299(7.60)	16	FWF10001-S16B24W5M	.591(15.00)	.728(18.50)	.654(16.60)
8	FWF10001-S08B24W5M	.276(7.00)	.413(10.50)	.339(8.60)	17	FWF10001-S17B24W5M	.630(16.00)	.768(19.50)	.693(17.60)
9	FWF10001-S09B24W5M	.315(8.00)	.453(11.50)	.378(9.60)	18	FWF10001-S18B24W5M	.669(17.00)	.807(20.50)	.732(18.60)
10	FWF10001-S10B24W5M	.354(9.00)	.492(12.50)	.417(10.60)	20	FWF10001-S20B24W5M	.748(19.00)	.886(22.50)	.811(20.60)



THIRD ANGLE PROJECTION

DESIGN UNITS Inch (metric)

SCALE 5:1 A4

GENERAL TOLERANCES (UNLESS SPECIFIED)

X.±.012(0.30)

X.±.008(0.20)

X.XX±.006(0.15)

X.XX±.004(0.10)

APPROVE BY FRANK

DATE 28/JUN/13

CHECKED BY JACOB

DATE 28/JUN/13

DRAWN BY CHERRY

DATE 28/JUN/13

PART NO.

FWF10001-SXXB24W5M

ITEM NO.

FWF10001

TITLE Wire to Board (Water Pitch 1.0mm 90° Angle (SMT))

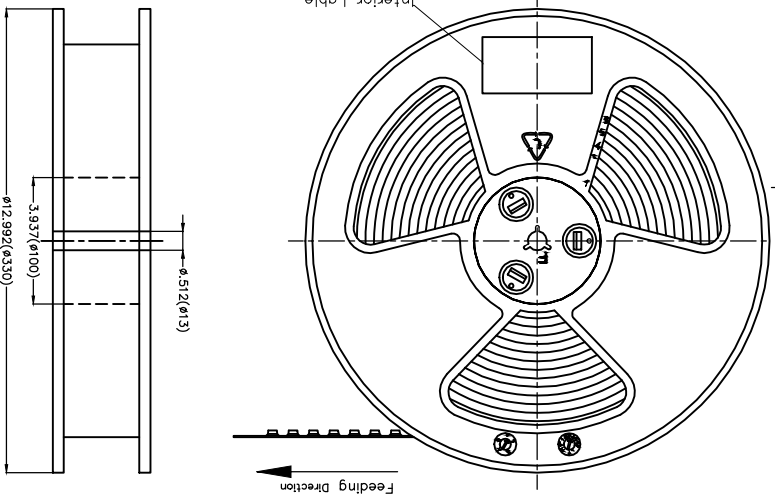
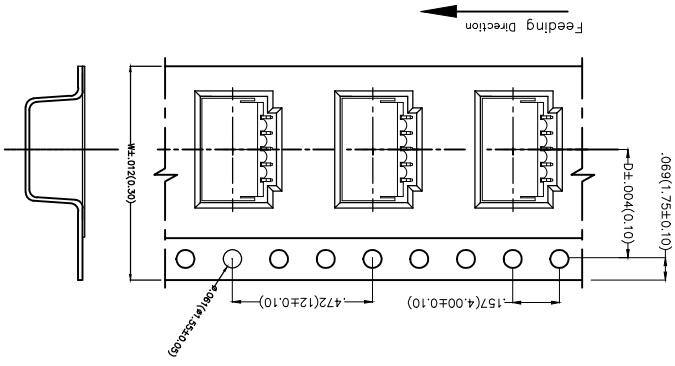
REV 0 SHEET NO. 2/3

TXGA
Leader Of Industry

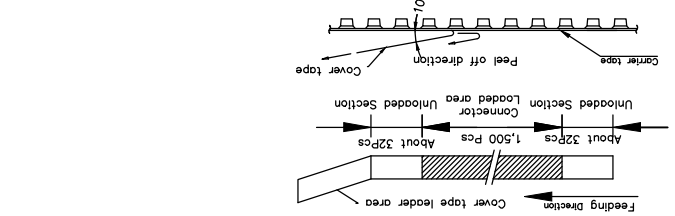
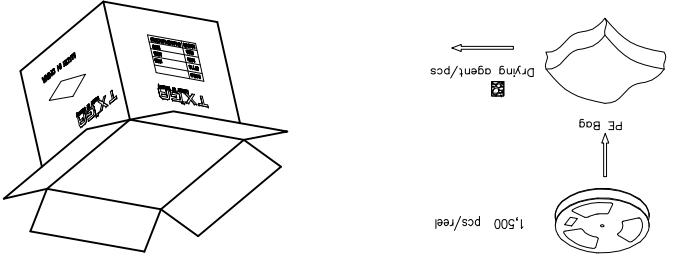
THIS DRAWING CONTAINS INFORMATION THAT IS PROPRIETARY TO TXGA INDUSTRIAL ELECTRONICS(SZ)CO.,LTD AND SHOULD NOT BE USED WITHOUT WRITTEN PERMISSION

THIRD ANGLE	PROJECTION	X.±.012(0.30)	DATE	28/JUN/13	FRANK	APPROVE BY	GENERAL TOLERANCES (UNLESS SPECIFIED)
			DATE	28/JUN/13	JACOB	CHECKED BY	
DESIGN UNITS	Inch (metric)	X.XX±.008(0.20)	DATE	28/JUN/13	CHEERY	DRAWN BY	
SCALE	SIZE	X.XX±.006(0.15)	DATE	28/JUN/13			
5:1	A4	X.XX±.004(0.10)					

ITEM NO.	FWF10001	DATE	28/JUN/13	DATE	28/JUN/13	DATE	28/JUN/13	THIS DRAWING CONTAINS INFORMATION THAT IS PROPRIETARY TO TXGA INDUSTRIAL ELECTRONICS(SZ)CO.,LTD AND SHOULD NOT BE USED WITHOUT WRITTEN PERMISSION
PART NO.	FWF10001-SXXB24WSM	DATE	28/JUN/13	DATE	28/JUN/13	DATE	28/JUN/13	
TITLE	Wire to Board (Walter) Pitch 1.0mm 90° Angle (SMT)	DATE	28/JUN/13	DATE	28/JUN/13	DATE	28/JUN/13	
REV 0	SHEET NO. 3/3							



Circuits	Dimensions(in/mm)	W	D	(n)
2	.295(7.50)	.630(16.00)	.453(11.50)	.945(24.00)
3	.295(7.50)	.630(16.00)	.453(11.50)	.945(24.00)
4	.295(7.50)	.630(16.00)	.453(11.50)	.945(24.00)
5	.295(7.50)	.630(16.00)	.453(11.50)	.945(24.00)
6	.295(7.50)	.630(16.00)	.453(11.50)	.945(24.00)
7	.295(7.50)	.630(16.00)	.453(11.50)	.945(24.00)
8	.295(7.50)	.630(16.00)	.453(11.50)	.945(24.00)
9	.295(7.50)	.630(16.00)	.453(11.50)	.945(24.00)
10	.453(11.50)	.945(24.00)	.798(20.20)	1.732(44.0)
11	.453(11.50)	.945(24.00)	.798(20.20)	1.732(44.0)

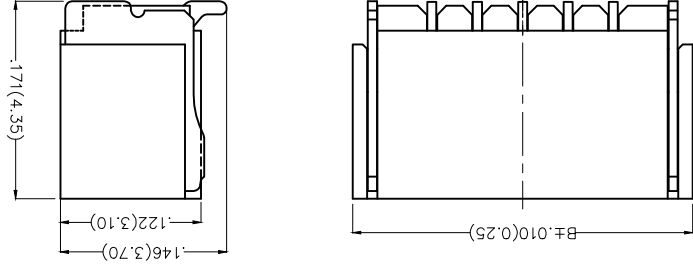
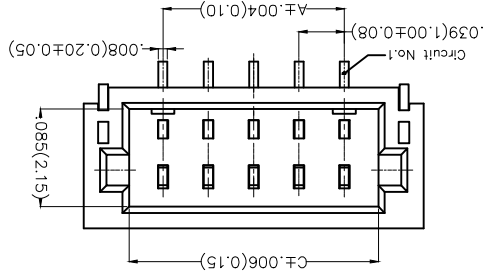


- Note:
- 10 sprocket hole cumulative tolerance±0.2
 - Carrier camber is within 1.0mm in 250mm
 - Material: White Conductive polystyrene Alloy 100% recyclable
 - All dimensions meet EIA-481-3 requirements
 - Peel off force of cover tape&carrier tape:20g~130g(0.2N~1.3N)
 - Component load per 13" reel: 1,500 pcs

REV	LOCATIONS	DESCRIPTION	DATE	REVISER	APPD

REV	LOCATIONS	DESCRIPTION	DATE	REVISER	APPD

Electrical
 Current Rating: 1A AC(rms)/DC
 Voltage Rating: 50V AC(rms)/DC
 Contact Resistance: 20 mΩ Max
 Insulation Resistance: 100 MΩ MIN
 Withstanding Voltage: 500V AC r.m.s
 Temperature Range-Operating: -25°C~+85°C
 Material and Plating
 Housing: PA9T (UL 94V-0)
 Contact Pin: Brass/ Tin plated
 Solder Tab: Copper alloy/ Tin plated



Ordering Information

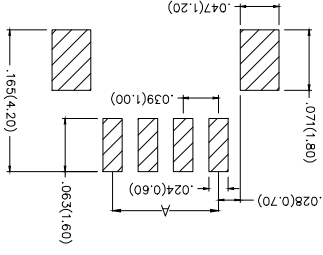
FWF 100 02 - S XX S 2 4 W5 M
 1 2 3 4 5 6 7 8 9 10

- 1 Category FWF-Wafer
- 2 Series Number 100-Pitch1.0mm
- 3 Distinction No. 02
- 4 Row Option Single Row
- 5 Circuits XX
- 6 Entry Angle S-180° Vertical
- 7 Plating 2-Tin Plated
- 8 Material-Resin 4-PA9T
- 9 Color-Resin W5-White
- 10 Packaging M-Reel

GENERAL TOLERANCES (UNLESS SPECIFIED)	APPROVE BY	DATE	PART NO.	ITEM NO.
X.±.012(0.30)	FRANK	28/JUN/13	FWF10002-SXXS24W5M	FWF10002
X.±.2	CHECKED BY	DATE	TITLE	
X.±.008(0.20)	JACOB	28/JUN/13	Wire to Board (Wafer)	
X.XX±.1	DRAWN BY	DATE	Pitch 1.0mm 180° Vertical (SMT)	
X.XX±.004(0.10)	CHERRY	28/JUN/13	THIS DRAWING CONTAINS INFORMATION THAT IS PROPRIETARY TO TXGA INDUSTRIAL ELECTRONICS(SZ)CO.,LTD AND SHOULD NOT BE USED WITHOUT WRITTEN PERMISSION	

THIRD ANGLE PROJECTION	DESIGN UNITS	SCALE
	Inch (metric)	5:1 A4

Recommended P.C.Board Layout



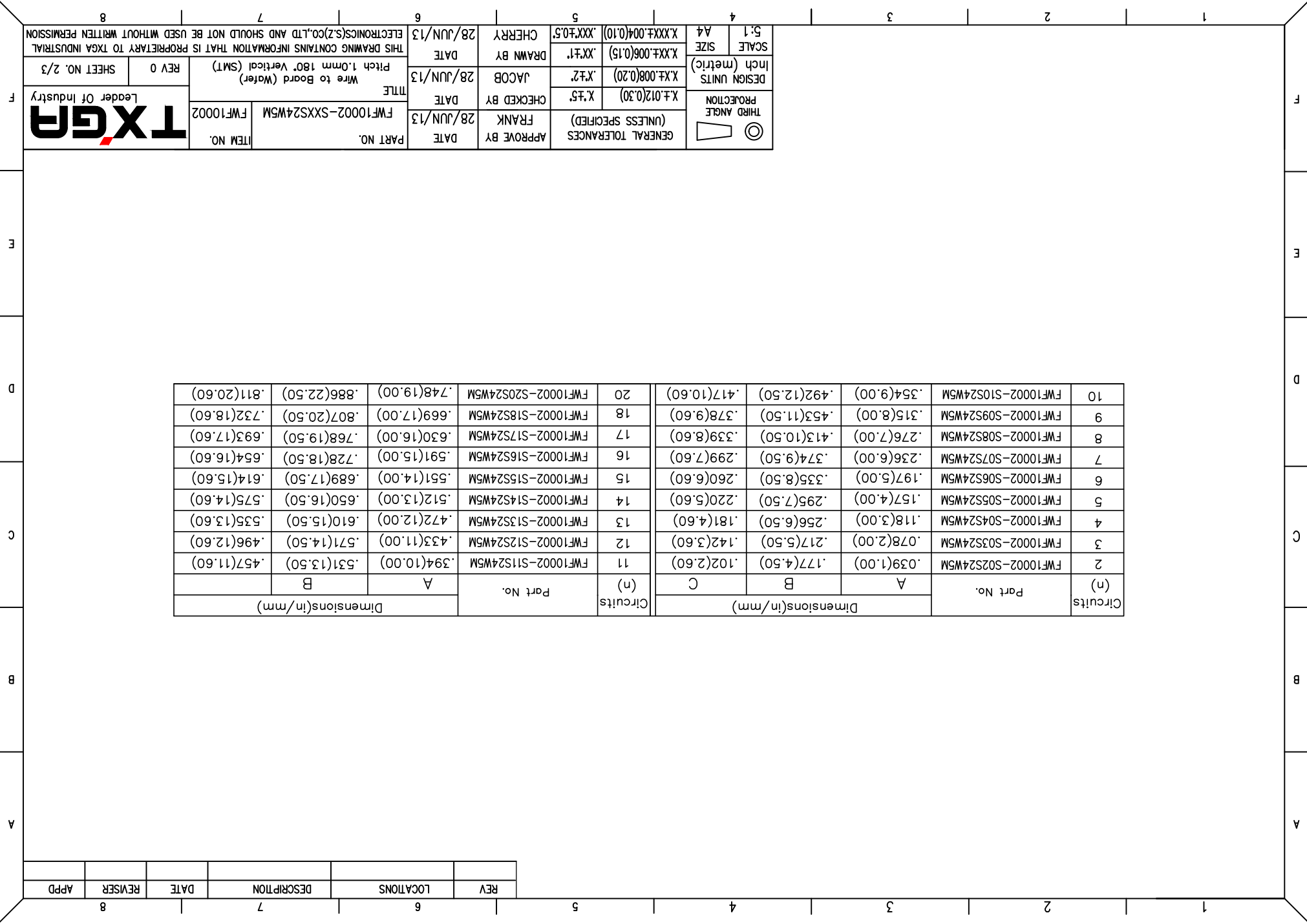
1 2 3 4 5 6 7 8

F E D C B A

REV	LOCATIONS	DESCRIPTION	DATE	REVISER	APPD

Circuits	Part No.	Dimensions(in/mm)							
		A	B	C					
2	FWF10002-S02S24W5M	.039(1.00)	.177(4.50)	.102(2.60)					
3	FWF10002-S03S24W5M	.078(2.00)	.217(5.50)	.142(3.60)					
4	FWF10002-S04S24W5M	.118(3.00)	.256(6.50)	.181(4.60)					
5	FWF10002-S05S24W5M	.157(4.00)	.295(7.50)	.220(5.60)					
6	FWF10002-S06S24W5M	.197(5.00)	.335(8.50)	.260(6.60)					
7	FWF10002-S07S24W5M	.236(6.00)	.374(9.50)	.299(7.60)					
8	FWF10002-S08S24W5M	.276(7.00)	.413(10.50)	.339(8.60)					
9	FWF10002-S09S24W5M	.315(8.00)	.453(11.50)	.378(9.60)					
10	FWF10002-S10S24W5M	.354(9.00)	.492(12.50)	.417(10.60)					
Circuits	Part No.	A	B	C	(n)	Part No.	Dimensions(in/mm)		
							A	B	
11	FWF10002-S11S24W5M	.394(10.00)	.531(13.50)	.457(11.60)	11	FWF10002-S12S24W5M	.433(11.00)	.571(14.50)	.496(12.60)
12	FWF10002-S12S24W5M	.472(12.00)	.610(15.50)	.535(13.60)	12	FWF10002-S13S24W5M	.512(13.00)	.650(16.50)	.575(14.60)
13	FWF10002-S13S24W5M	.551(14.00)	.689(17.50)	.614(15.60)	13	FWF10002-S14S24W5M	.591(15.00)	.728(18.50)	.654(16.60)
14	FWF10002-S14S24W5M	.630(16.00)	.768(19.50)	.693(17.60)	14	FWF10002-S15S24W5M	.669(17.00)	.807(20.50)	.732(18.60)
15	FWF10002-S15S24W5M	.708(18.00)	.847(21.50)	.768(19.50)	15	FWF10002-S16S24W5M	.748(19.00)	.886(22.50)	.811(20.60)
16	FWF10002-S16S24W5M	.787(20.00)	.926(23.50)	.847(21.50)	16	FWF10002-S17S24W5M	.827(21.00)	.965(24.50)	.906(22.60)
17	FWF10002-S17S24W5M	.866(22.00)	1.005(25.50)	.886(22.50)	17	FWF10002-S18S24W5M	.906(23.00)	1.044(26.50)	.945(23.60)
18	FWF10002-S18S24W5M	.945(24.00)	1.084(27.50)	.984(24.60)	18	FWF10002-S19S24W5M	.984(25.00)	1.123(28.50)	1.023(25.60)
19	FWF10002-S19S24W5M	1.023(26.00)	1.163(29.50)	1.062(26.60)	19	FWF10002-S20S24W5M	1.062(27.00)	1.202(30.50)	1.101(27.60)
20	FWF10002-S20S24W5M	1.101(28.00)	1.242(31.50)	1.141(28.60)	20	FWF10002-S21S24W5M	1.141(29.00)	1.281(32.50)	1.180(29.60)

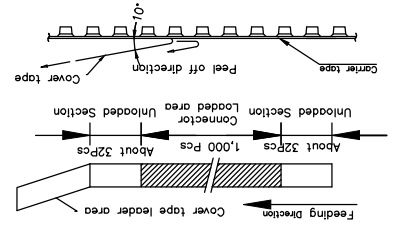
THIRD ANGLE PROJECTION	DESIGN UNITS Inch (metric)	SCALE	5:1				
		SIZE	A4				
GENERAL TOLERANCES (UNLESS SPECIFIED)	X±.012(0.30)	X±.008(0.20)	X±.006(0.15)	X±.004(0.10)	X±.003(0.075)	DATE	28/JUN/13
						CHECKED BY	FRANK
APPROVE BY	FRANK	DATE	28/JUN/13	PART NO.	FWF10002-SXXS24W5M	ITEM NO.	FWF10002
DRAWN BY	JACOB	DATE	28/JUN/13	TITLE	Wire to Board (Water)	REV 0	SHEET NO. 2/3
CHERRY	DATE	28/JUN/13	THIS DRAWING CONTAINS INFORMATION THAT IS PROPRIETARY TO TXGA INDUSTRIAL ELECTRONICS(SZ)CO.,LTD AND SHOULD NOT BE USED WITHOUT WRITTEN PERMISSION				



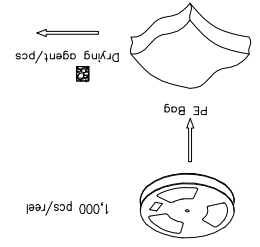
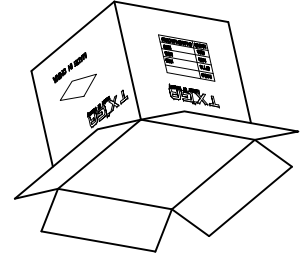
REV	LOCATIONS	DESCRIPTION	DATE	REVISER	APPD

Note:

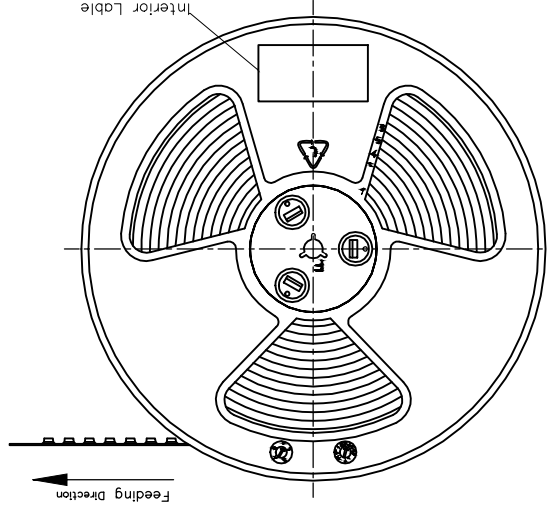
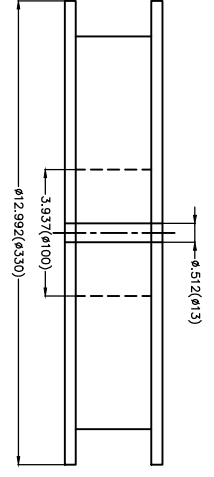
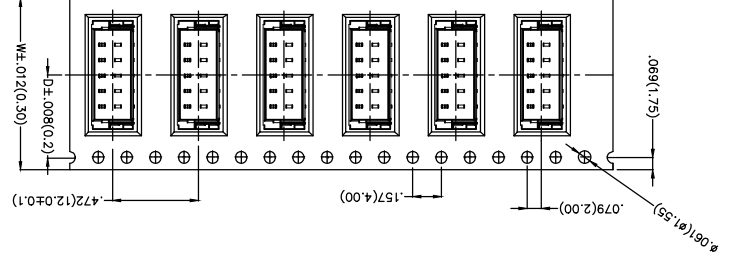
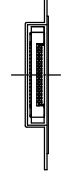
- 10 sprocket hole cumulative tolerance±0.2
- Carrier camber is within 1.0mm in 250mm
- Material: White Conductive polystyrene Alloy 100% recyclable
- All dimensions meet EIA-481-3 requirements
- Peel off force of cover tape&carrier tape:20g~130g(0.2N~1.3N)
- Component load per 13" reel: 1,000 pcs



Circuits	Dimensions(in/mm)	
	D	W
(n)	D	W
2	.295(7.50)	.630(16.00)
3	.295(7.50)	.630(16.00)
4	.295(7.50)	.630(16.00)
5	.295(7.50)	.630(16.00)
6	.295(7.50)	.630(16.00)
7	.295(7.50)	.630(16.00)
8	.295(7.50)	.630(16.00)
9	.295(7.50)	.630(16.00)
10	.453(11.50)	.945(24.00)
11	.453(11.50)	.945(24.00)

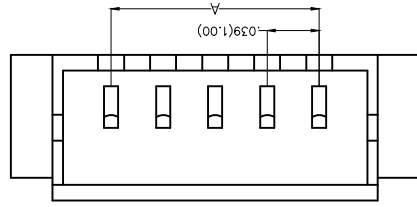
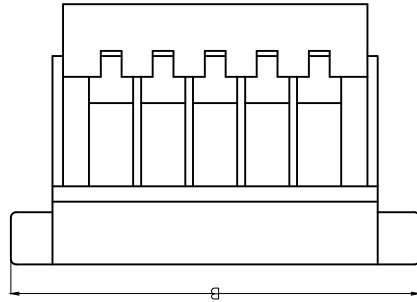
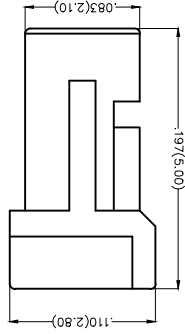


SCALE	5:1	DRAWN BY	CHERRY	DATE	28/JUN/13	GENERAL TOLERANCES (UNLESS SPECIFIED)	FRANK	DATE	28/JUN/13	ITEM NO.	FWF10002-SXXS24WSM	TITLE	Wire to Board (Water)	SHEET NO.	3/3
	A4		JACOB		JACOB		28/JUN/13		FWF10002		REV 0				
DESIGN UNITS	Inch (metric)	CHECKED BY	JACOB	DATE	28/JUN/13	APPROVE BY	FRANK	DATE	28/JUN/13	PART NO.	FWF10002-SXXS24WSM	LEADER OF INDUSTRY	THIS DRAWING CONTAINS INFORMATION THAT IS PROPRIETARY TO TXGA INDUSTRIAL ELECTRONICS(SZ)CO.,LTD AND SHOULD NOT BE USED WITHOUT WRITTEN PERMISSION		
THIRD ANGLE		APPROVE BY	FRANK	DATE	28/JUN/13	GENERAL TOLERANCES	(UNLESS SPECIFIED)	DATE	28/JUN/13	PART NO.	FWF10002-SXXS24WSM	LEADER OF INDUSTRY	THIS DRAWING CONTAINS INFORMATION THAT IS PROPRIETARY TO TXGA INDUSTRIAL ELECTRONICS(SZ)CO.,LTD AND SHOULD NOT BE USED WITHOUT WRITTEN PERMISSION		
PROJECTION		CHECKED BY	JACOB	DATE	28/JUN/13	GENERAL TOLERANCES	(UNLESS SPECIFIED)	DATE	28/JUN/13	PART NO.	FWF10002-SXXS24WSM	LEADER OF INDUSTRY	THIS DRAWING CONTAINS INFORMATION THAT IS PROPRIETARY TO TXGA INDUSTRIAL ELECTRONICS(SZ)CO.,LTD AND SHOULD NOT BE USED WITHOUT WRITTEN PERMISSION		
DESIGN UNITS	X.±.008(0.20)	APPROVE BY	JACOB	DATE	28/JUN/13	GENERAL TOLERANCES	(UNLESS SPECIFIED)	DATE	28/JUN/13	PART NO.	FWF10002-SXXS24WSM	LEADER OF INDUSTRY	THIS DRAWING CONTAINS INFORMATION THAT IS PROPRIETARY TO TXGA INDUSTRIAL ELECTRONICS(SZ)CO.,LTD AND SHOULD NOT BE USED WITHOUT WRITTEN PERMISSION		
Inch (metric)	X.±.008(0.20)	DATE	28/JUN/13	DATE	28/JUN/13	GENERAL TOLERANCES	(UNLESS SPECIFIED)	DATE	28/JUN/13	PART NO.	FWF10002-SXXS24WSM	LEADER OF INDUSTRY	THIS DRAWING CONTAINS INFORMATION THAT IS PROPRIETARY TO TXGA INDUSTRIAL ELECTRONICS(SZ)CO.,LTD AND SHOULD NOT BE USED WITHOUT WRITTEN PERMISSION		
SCALE	X.±.006(0.15)	DRAWN BY	CHERRY	DATE	28/JUN/13	GENERAL TOLERANCES	(UNLESS SPECIFIED)	DATE	28/JUN/13	PART NO.	FWF10002-SXXS24WSM	LEADER OF INDUSTRY	THIS DRAWING CONTAINS INFORMATION THAT IS PROPRIETARY TO TXGA INDUSTRIAL ELECTRONICS(SZ)CO.,LTD AND SHOULD NOT BE USED WITHOUT WRITTEN PERMISSION		
5:1	X.±.006(0.15)	DATE	28/JUN/13	DATE	28/JUN/13	GENERAL TOLERANCES	(UNLESS SPECIFIED)	DATE	28/JUN/13	PART NO.	FWF10002-SXXS24WSM	LEADER OF INDUSTRY	THIS DRAWING CONTAINS INFORMATION THAT IS PROPRIETARY TO TXGA INDUSTRIAL ELECTRONICS(SZ)CO.,LTD AND SHOULD NOT BE USED WITHOUT WRITTEN PERMISSION		



REV	LOCATIONS	DESCRIPTION	DATE	REVISER	APPD

Electrical
 Temperature Range—Operating: -25°C~+85°C
 Material
 Housing: P466 (UL 94V-0)
 Applicable Terminal: FT10001
 Mates With: WF10001, WF10002 Series



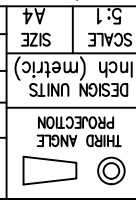
Circuits	Part No.	Dimensions(n/mm)	
		A	B
(n)	FHG10001-S02MZW1B	.039(1.00)	.197(5.00)
2	FHG10001-S03MZW1B	.078(2.00)	.236(6.00)
3	FHG10001-S04MZW1B	.118(3.00)	.276(7.00)
4	FHG10001-S05MZW1B	.157(4.00)	.315(8.00)
5	FHG10001-S06MZW1B	.197(5.00)	.354(9.00)
6	FHG10001-S07MZW1B	.236(6.00)	.394(10.00)
7	FHG10001-S08MZW1B	.276(7.00)	.433(11.00)
8	FHG10001-S09MZW1B	.315(8.00)	.472(12.00)
9	FHG10001-S10MZW1B	.354(9.00)	.512(13.00)
10	FHG10001-S11MZW1B	.394(10.00)	.551(14.00)
11	FHG10001-S12MZW1B	.433(11.00)	.591(15.00)
12	FHG10001-S13MZW1B	.472(12.00)	.630(16.00)
13	FHG10001-S14MZW1B	.512(13.00)	.669(17.00)
14	FHG10001-S15MZW1B	.551(14.00)	.709(18.00)
15	FHG10001-S16MZW1B	.591(15.00)	.748(19.00)
16	FHG10001-S17MZW1B	.630(16.00)	.787(20.00)
17	FHG10001-S18MZW1B	.669(17.00)	.827(21.00)
18	FHG10001-S19MZW1B	.709(18.00)	.866(22.00)
19	FHG10001-S20MZW1B	.748(19.00)	.906(23.00)

Ordering Information

FHG 100 01 - S XX M 2 W1 B

- 1 Category
- 2 Series Number
- 3 Distinction No.
- 4 Row Option
- 5 Single Row
- 6 FHG—Housing
- 7 100—Pitch, 0mm
- 8 Color—Resin
- 9 W1—White
- 10 B—PE Bag
- 11 Packaging

- 1 Circuits
- 2 XX
- 3 Entry Type
- 4 M—Male
- 5 2—PA66
- 6 Material—Resin
- 7 Color—Resin
- 8 W1—White
- 9 B—PE Bag
- 10 Packaging

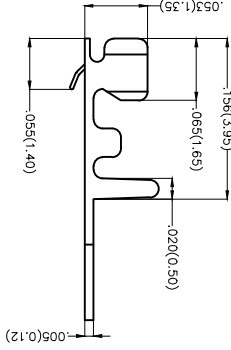
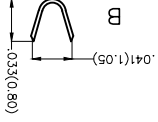
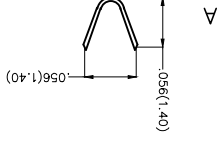
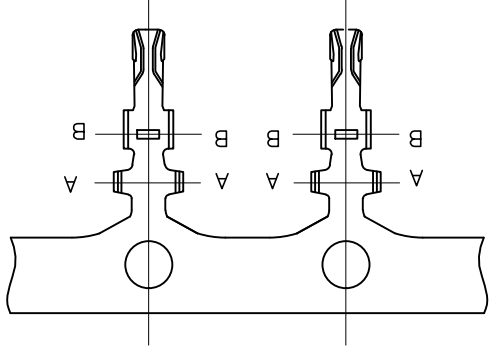


GENERAL TOLERANCES
 (UNLESS SPECIFIED)
 APPROVE BY FRANK
 DATE 25/JUN/13
 CHECKED BY JACOB
 DATE 25/JUN/13
 DRAWN BY CHERRY
 DATE 25/JUN/13

DESIGN UNITS
 Inch (metric)
 X.XX±.008(0.20)
 X.XX±.006(0.15)
 X.XX±.004(0.10)
 SCALE
 5:1
 A4

THIS DRAWING CONTAINS INFORMATION THAT IS PROPRIETARY TO TXGA INDUSTRIAL ELECTRONICS(SZ)CO.,LTD AND SHOULD NOT BE USED WITHOUT WRITTEN PERMISSION
 PART NO. FHG10001-SXXMZW1B
 ITEM NO. FHG10001
 TITLE Wire to Board
 Pitch 1.0mm(Housing)
 REV 0
 SHEET NO. 1/1





Electrical
 Material: Phosphor Bronze C5191
 All Corners and Radial Have a Maximum
 Radius of 0.1mm unless Otherwise Specified
 Plating: Tin-Plated
 Wire Range: 32AWG~28AWG
 Applicable Housing: FHG10001 Series
 Minimum Order Quantity: 20,000 PCS

REV	LOCATIONS	DESCRIPTION	DATE	REVISER	APPD

THIRD ANGLE		DESIGN UNITS		SCALE		GENERAL TOLERANCES		APPROVE BY		DATE		PART NO.		ITEM NO.	
		X.F.012(0.30)	X.F.±.008(0.20)	X.XX±.006(0.15)	X.XX±.004(0.10)	X.XX±.05	(UNLESS SPECIFIED)	FRANK	25/JUN/13	FT10001-F2H	FT10001	Wire to Board		THIS DRAWING CONTAINS INFORMATION THAT IS PROPRIETARY TO TXGA INDUSTRIAL ELECTRONICS(SZ)CO.,LTD AND SHOULD NOT BE USED WITHOUT WRITTEN PERMISSION	
		X.±.5	X.±.2	X.±.1	X.±.1			CHECKED BY	25/JUN/13	JACOB	25/JUN/13	TITLE		REV 0	SHEET NO. 1/2
								DRAWN BY	25/JUN/13	CHERRY	25/JUN/13	DATE			

TXGA
 Leader Of Industry

REV	LOCATIONS	DESCRIPTION	DATE	REVISER	APPD

A

B

C

D

E

F

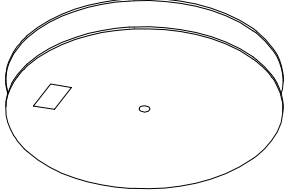
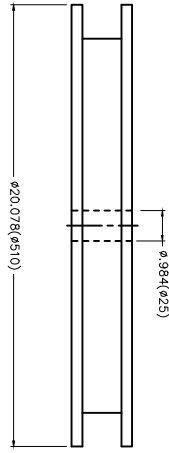
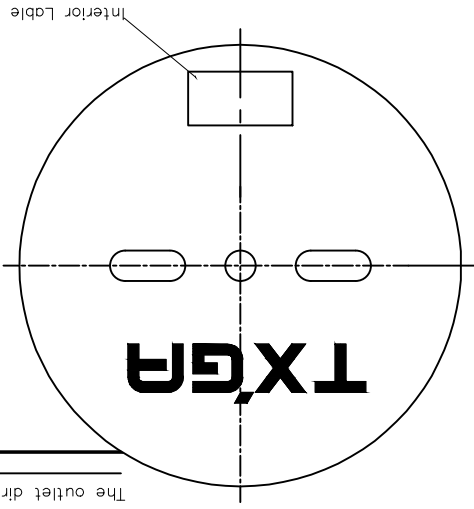


DATE	25/JUN/13	APPROVE BY	FRANK
DATE	25/JUN/13	CHECKED BY	X.±.5
DATE	25/JUN/13	DRAWN BY	JACOB
DATE	25/JUN/13	CHERRY	

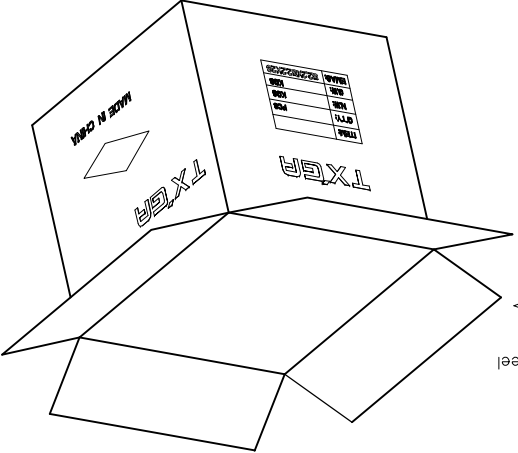
GENERAL TOLERANCES	(UNLESS SPECIFIED)
THIRD ANGLE	PROJECTION
DESIGN UNITS	Inch (metric)
SCALE	5:1
SIZE	A4

ITEM NO.	FT10001
PART NO.	FT10001-F2H
TITLE	Wire to Board Pitch 1.0mm(Terminal)
REV 0	SHEET NO. 2/2

THIS DRAWING CONTAINS INFORMATION THAT IS PROPRIETARY TO TXGA INDUSTRIAL ELECTRONICS(SZ)CO.,LTD AND SHOULD NOT BE USED WITHOUT WRITTEN PERMISSION



20,000Pcs/Reel



A

B

C

D

E

F

1

2

3

4

5

6

7

8

X-ON Electronics

Largest Supplier of Electrical and Electronic Components

Click to view similar products for [Headers & Wire Housings](#) category:

Click to view products by [TXGA](#) manufacturer:

Other Similar products are found below :

[95000-104TRLF](#) [10135584-644402LF](#) [DF62W-EP2022PCA](#) [95000-106TRLF](#) [DF62W-2022SCA](#) [DF62W-EP2022PC](#) [2203348](#) [DF62W-2022SC](#) [1084018](#) [1029039](#) [1084017](#) [802-10-012-10-002000](#) [1112640](#) [1112639](#) [891-007-9SS-BST1T](#) [000-34000](#) [0008550134](#) [0009482033](#) [0009507031](#) [57102-F02-18ULF](#) [57102-S06-03LF](#) [57202-S52-04LF](#) [PCN6-15S-2.5E](#) [0039019024](#) [58102-G61-06LF](#) [582553-1](#) [0009485154](#) [0009508121](#) [0022285053](#) [0050291907](#) [018731A](#) [LY20-4P-DT1-P1E-BR](#) [02.125.8002.8](#) [60101931](#) [60598-1 \(Cut Strip\)](#) [M1625-3R/100](#) [61062-3](#) [61082-181009](#) [CSU011177004](#) [636-1427](#) [638009-1](#) [641938-9](#) [641991-4](#) [644168-1](#) [644827-2](#) [647662-1](#) [65039-019ELF](#) [65692-001LF](#) [65781-018](#) [65781-047](#)