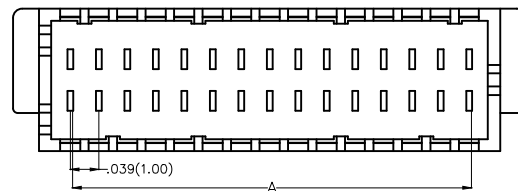
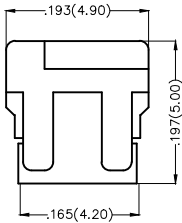
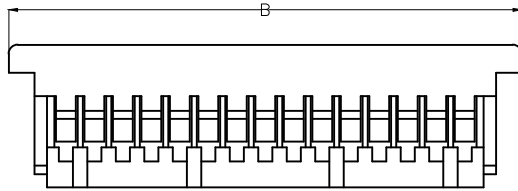


1 2 3 4 5 6 7 8

REV	LOCATIONS	DESCRIPTION	DATE	REVISER	APPD

Electrical  
 Temperature Range—Operating: -25°C~+85°C  
 Material  
 Housing: PA66( UL 94V-0)  
 Applicable Terminal: FT10001  
 Mates With: FWF10003,FWF10004 Series



Circuits (n)	Part No.	Dimensions(in/mm)	
		A	B
8	FHG10002-D08M2W5B	.118(3.00)	.276(7.00)
10	FHG10002-D10M2W5B	.157(4.00)	.315(8.00)
12	FHG10002-D12M2W5B	.197(5.00)	.354(9.00)
14	FHG10002-D14M2W5B	.236(6.00)	.394(10.00)
16	FHG10002-D16M2W5B	.276(7.00)	.433(11.00)
20	FHG10002-D20M2W5B	.354(9.00)	.512(13.00)
30	FHG10002-D30M2W5B	.551(14.00)	.709(18.00)
40	FHG10002-D40M2W5B	.748(19.00)	.906(23.00)
50	FHG10002-D50M2W5B	.945(24.00)	1.102(28.00)
60	FHG10002-D60M2W5B	1.142(29.00)	1.299(33.00)

Ordering Information

FHG 100 02 — D XX M 2 W5 B  
 1 2 3 4 5 6 7 8 9

1	Category FHG—Housing	2	Series Number 100—Pitch1.00mm	3	Distinction No. 02	4	Row Option Double row	5	Circuits XX
6	Entry Type M—Male	7	Material—Resin 2—PA66	8	Color—Resin W5—White	9	Packaging B—PE Bag		

 THIRD ANGLE PROJECTION  DESIGN UNITS Inch (metric)  SCALE 5:1 SIZE A4	GENERAL TOLERANCES (UNLESS SPECIFIED)		APPROVE BY FRANK	DATE 25/JUN/13	PART NO. FHG10002-DXXM2W5B	ITEM NO. FHG10002	 Leader Of Industry	
	X.±.012(0.30)	X.±5'	CHECKED BY JACOB	DATE 25/JUN/13	TITLE Wire to Board Pitch 1.0mm(Housing)			REV 0
	X.X±.008(0.20)	.X'±2'	DRAWN BY CHERRY	DATE 25/JUN/13	THIS DRAWING CONTAINS INFORMATION THAT IS PROPRIETARY TO TXGA INDUSTRIAL ELECTRONICS(S.Z)CO.,LTD AND SHOULD NOT BE USED WITHOUT WRITTEN PERMISSION			
	X.XX±.006(0.15)	.XX±1'						
X.XXX±.004(0.10)	.XXX±0.5'							

1 2 3 4 5 6 7 8

## X-ON Electronics

Largest Supplier of Electrical and Electronic Components

*Click to view similar products for [Headers & Wire Housings](#) category:*

*Click to view products by [TXGA](#) manufacturer:*

Other Similar products are found below :

[0015917161](#) [0022155065](#) [57102-F02-18ULF](#) [58102-G61-06LF](#) [582553-1](#) [01.001.5753.1](#) [0050291907](#) [02.125.8002.8](#) [609-3404](#) [61062-3](#)  
[CSU011177004](#) [622-0430](#) [622-3653LF](#) [63453-116](#) [636-1030](#) [636-1427](#) [636-3427](#) [636-4007](#) [641938-9](#) [65495-038](#) [65692-001LF](#) [65781-018](#)  
[65781-047](#) [65817-010LF](#) [65817-015LF](#) [67095-007LF](#) [67601157](#) [68631-112](#) [68645-018](#) [699319-000](#) [70.362.1628.0](#) [70-4210](#) [70-4226B](#) [70-](#)  
[4853B](#) [71.350.2428.0](#) [733-134](#) [733-162](#) [760-3052](#) [MHR-64-VUAL](#) [80.063.4001.1](#) [800-90-001-10-001000](#) [801-43-002-10-013000](#)  
[801-43-006-10-002000](#) [803-43-024-10-001000](#) [803-93-012-10-001000](#) [8-1437020-4](#) [819-22-004-30-001101](#) [820-22-006-30-001101](#)  
[820-22-008-30-001101](#) [821-22-002-10-001101](#)