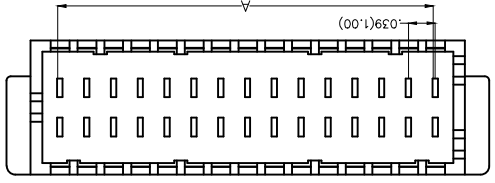
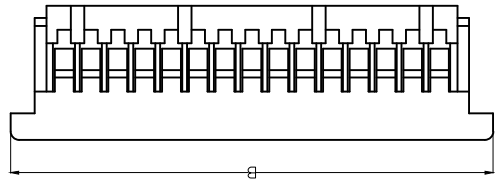
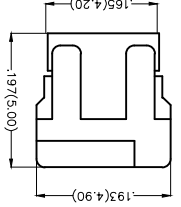


REV	LOCATIONS	DESCRIPTION	DATE	REVISER	APPD

Electrical  
 Temperature Range-Operating: -25°C~+85°C  
 Material  
 Housing:PA66(UL 94V-0)  
 Applicable Terminal: FT10001  
 Mates With: FW10003,FW10004 Series



Circuits (n)	Part No.	Dimensions(in/mm)	
		A	B
10	FHG10002-D10M2WSB	.157(4.00)	.315(8.00)
12	FHG10002-D12M2WSB	.197(5.00)	.354(9.00)
14	FHG10002-D14M2WSB	.236(6.00)	.394(10.00)
16	FHG10002-D16M2WSB	.276(7.00)	.433(11.00)
20	FHG10002-D20M2WSB	.354(9.00)	.512(13.00)
30	FHG10002-D30M2WSB	.551(14.00)	.709(18.00)
40	FHG10002-D40M2WSB	.748(19.00)	.906(23.00)
50	FHG10002-D50M2WSB	.945(24.00)	1.102(28.00)
60	FHG10002-D60M2WSB	1.142(29.00)	1.299(33.00)

### Ordering Information

FHG 100 02 - D XX M 2 W5 B  
 1 2 3 4 5 6 7 8 9

- 1 Category FHG-Housing
- 2 Series Number 100-Pitch1.00mm
- 3 Distinction No. 02
- 4 Row Option Double row
- 5 Circuits XX
- 6 Entry Type M-Male
- 7 Material-Resin 2-PA66
- 8 Color-Resin WS-White
- 9 Packaging B-PE Bag

THIRD ANGLE PROJECTION	DESIGN UNITS Inch (metric)	SCALE 5:1
GENERAL TOLERANCES (UNLESS SPECIFIED)	X.±.012(0.30)	A4
APPROVE BY FRANK	X.±.7	SIZE
DATE 25/JUN/13	X.XX±.006(0.15)	5:1
CHECKED BY JACOB	X.XX±.004(0.10)	
DRAWN BY CHERRY		
DATE 25/JUN/13		



PART NO. FHG10002-DXXM2WSB  
 ITEM NO. FHG10002  
 TITLE Wire to Board  
 Pitch 1.0mm(Housing)  
 REV 0 SHEET NO. 1/1  
 THIS DRAWING CONTAINS INFORMATION THAT IS PROPRIETARY TO TXGA INDUSTRIAL ELECTRONICS(SZ)CO.,LTD AND SHOULD NOT BE USED WITHOUT WRITTEN PERMISSION

## X-ON Electronics

Largest Supplier of Electrical and Electronic Components

*Click to view similar products for [Headers & Wire Housings](#) category:*

*Click to view products by [TXGA](#) manufacturer:*

Other Similar products are found below :

[95000-104TRLF](#) [10135584-644402LF](#) [DF62W-EP2022PCA](#) [95000-106TRLF](#) [DF62W-2022SCA](#) [DF62W-EP2022PC](#) [2203348](#) [DF62W-2022SC](#) [1084018](#) [1029039](#) [1084017](#) [802-10-012-10-002000](#) [1112640](#) [1112639](#) [891-007-9SS-BST1T](#) [000-34000](#) [0008550134](#) [0009482033](#) [0009507031](#) [57102-F02-18ULF](#) [57102-S06-03LF](#) [57202-S52-04LF](#) [PCN6-15S-2.5E](#) [0039019024](#) [58102-G61-06LF](#) [582553-1](#) [0009485154](#) [0009508121](#) [0022285053](#) [0050291907](#) [018731A](#) [LY20-4P-DT1-P1E-BR](#) [02.125.8002.8](#) [60101931](#) [60598-1 \(Cut Strip\)](#) [M1625-3R/100](#) [61062-3](#) [61082-181009](#) [CSU011177004](#) [636-1427](#) [638009-1](#) [641938-9](#) [641991-4](#) [644168-1](#) [644827-2](#) [647662-1](#) [65039-019ELF](#) [65692-001LF](#) [65781-018](#) [65781-047](#)