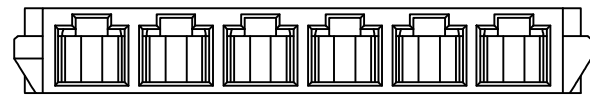
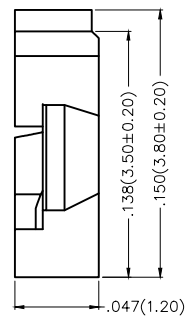
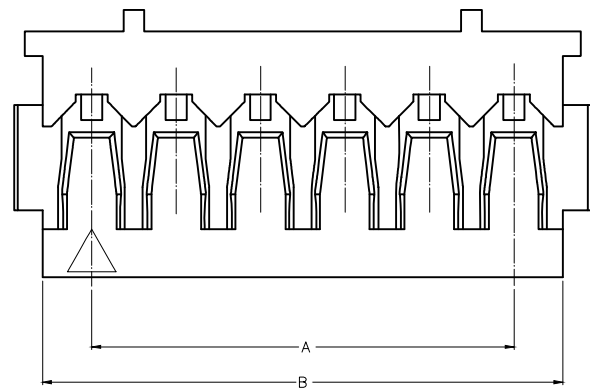
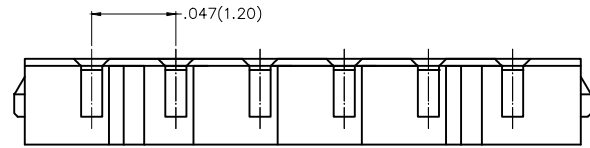


REV	LOCATIONS	DESCRIPTION	DATE	REVISER	APPD

Electrical  
 Temperature Range—Operating: -25°C~+85°C

Material  
 Housing: PA66 (UL94V-0)  
 Applicable Terminal: FT12001  
 Mates With (Wafer): FWF12001 Series.



Circuits (n)	Part No.	Dimensions(in/mm)	
		A	B
2	FHG12001-S02M2W1B	.047(1.20)	.102(2.60)
3	FHG12001-S03M2W1B	.094(2.40)	.150(3.80)
4	FHG12001-S04M2W1B	.142(3.60)	.196(5.00)
5	FHG12001-S05M2W1B	.189(4.80)	.244(6.20)
6	FHG12001-S06M2W1B	.236(6.00)	.291(7.40)
7	FHG12001-S07M2W1B	.283(7.20)	.338(8.60)

Ordering Information

FHG 120 01 - S XX M 2 W1 B  
 1 2 3 4 5 6 7 8 9

1   Category FHG—Housing	2   Series Number 120—Pitch1.20mm	3   Distinction No. 01	4   Row Option S—Single row
5   Circuits XX	6   Type M—Male	7   Material—Resin 2—PA66	8   Color—Resin W1—White
			9   Packaging B—PE Bag

 THIRD ANGLE PROJECTION	GENERAL TOLERANCES (UNLESS SPECIFIED)		APPROVE BY FRANK	DATE 05/AUG/16	PART NO. FHG12001-SXXM2W1B	ITEM NO. FHG12001	 Leader Of Industry	
	DESIGN UNITS Inch (metric)	X.±.012(0.30)	.X'±5'	CHECKED BY CHERRY	DATE 05/AUG/16	TITLE Wire to Board Pitch 1.2mm(Housing)		REV 0
SCALE 5:1	SIZE A4	X.XX±.006(0.15)	.XX'±1"	DRAWN BY VERNON	DATE 05/AUG/16	THIS DRAWING CONTAINS INFORMATION THAT IS PROPRIETARY TO TXGA INDUSTRIAL ELECTRONICS(S.Z)CO.,LTD AND SHOULD NOT BE USED WITHOUT WRITTEN PERMISSION		

## X-ON Electronics

Largest Supplier of Electrical and Electronic Components

*Click to view similar products for [Headers & Wire Housings](#) category:*

*Click to view products by [TXGA](#) manufacturer:*

Other Similar products are found below :

[0015917161](#) [0022155065](#) [57102-F02-18ULF](#) [58102-G61-06LF](#) [582553-1](#) [01.001.5753.1](#) [0050291907](#) [02.125.8002.8](#) [609-3404](#) [61062-3](#)  
[CSU011177004](#) [622-0430](#) [622-3653LF](#) [63453-116](#) [636-1030](#) [636-1427](#) [636-3427](#) [636-4007](#) [641938-9](#) [65495-038](#) [65692-001LF](#) [65781-018](#)  
[65781-047](#) [65817-010LF](#) [65817-015LF](#) [67095-007LF](#) [67601157](#) [68631-112](#) [68645-018](#) [699319-000](#) [70.362.1628.0](#) [70-4210](#) [70-4226B](#) [70-](#)  
[4853B](#) [71.350.2428.0](#) [733-134](#) [733-162](#) [760-3052](#) [MHR-64-VUAL](#) [80.063.4001.1](#) [800-90-001-10-001000](#) [801-43-002-10-013000](#)  
[801-43-006-10-002000](#) [803-43-024-10-001000](#) [803-93-012-10-001000](#) [8-1437020-4](#) [819-22-004-30-001101](#) [820-22-006-30-001101](#)  
[820-22-008-30-001101](#) [821-22-002-10-001101](#)