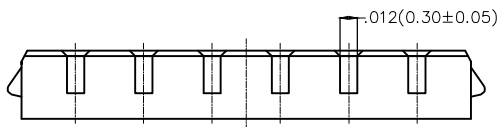
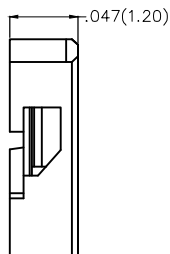
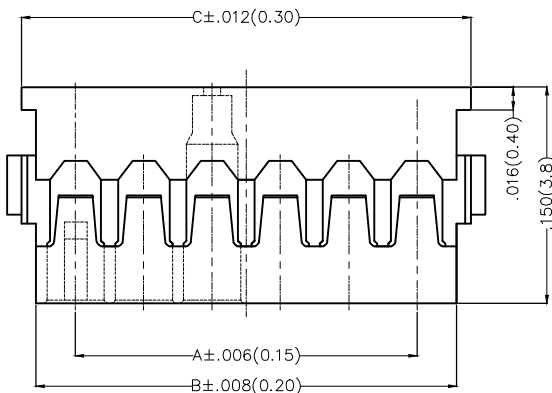


1 2 3 4 5 6 7 8

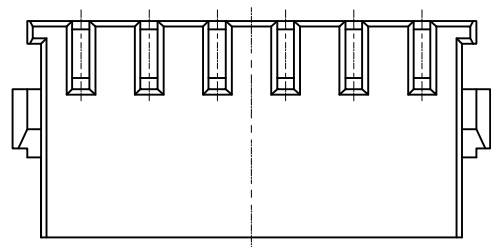
REV	LOCATIONS	DESCRIPTION	DATE	REVISER	APPD
1	△	Material-Resin changes	21/JUN/19	KATE	CHERRY



Electrical  
 Temperature Range-Operating: -25°C~+85°C  
 Material  
 △ Housing: PA46 (UL 94V-0) Black  
 Applicable Terminal: FT12002  
 Mates With (Wafer): FWF12002 Series.



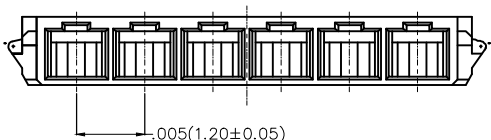
Circuits (n)	Part No.	Dimensions(in/mm)		
		A	B	C
2	FHG12002-S02M6K6B	.047(1.20)	.102(2.60)	.122(3.10)
3	FHG12002-S03M6K6B	.094(2.40)	.150(3.80)	.169(4.30)
4	FHG12002-S04M6K6B	.141(3.60)	.197(5.00)	.217(5.50)
5	FHG12002-S05M6K6B	.189(4.80)	.244(6.20)	.264(6.70)
6	FHG12002-S06M6K6B	.236(6.00)	.291(7.40)	.311(7.90)



### Ordering Information

FHG 120 02 — S XX M 6 K6 B  
 1 2 3 4 5 6 7 8 9

1	Category FHG-Housing	2	Series Number 120-Pitch1.20mm	3	Distinction No. 02	4	Row Option S-Single row		
5	Circuits XX	6	Type M-Male	7	Material-Resin 6-PA46 △	8	Color-Resin K6-Black	9	Packaging B-PE Bag



 THIRD ANGLE PROJECTION	GENERAL TOLERANCES (UNLESS SPECIFIED)		APPROVE BY FRANK	DATE 20/JUN/17	PART NO. FHG12002-SXXM6K6B	ITEM NO. FHG12002	 Leader Of Industry	
	DESIGN UNITS Inch (metric)	X.±.012(0.30)	X.±5'	CHECKED BY CHERRY	DATE 20/JUN/17	TITLE Wire to Board Pitch 1.2mm(Housing)		REV 1
SCALE 5:1	SIZE A4	X.XX±.006(0.15)	.XX'±1'	DRAWN BY LXF	DATE 20/JUN/17	THIS DRAWING CONTAINS INFORMATION THAT IS PROPRIETARY TO TXGA INDUSTRIAL ELECTRONICS(S.Z)CO.,LTD AND SHOULD NOT BE USED WITHOUT WRITTEN PERMISSION		

1 2 3 4 5 6 7 8

## X-ON Electronics

Largest Supplier of Electrical and Electronic Components

*Click to view similar products for [Headers & Wire Housings](#) category:*

*Click to view products by [TXGA](#) manufacturer:*

Other Similar products are found below :

[0015917161](#) [0022155065](#) [57102-F02-18ULF](#) [58102-G61-06LF](#) [582553-1](#) [01.001.5753.1](#) [0050291907](#) [02.125.8002.8](#) [609-3404](#) [61062-3](#)  
[CSU011177004](#) [622-0430](#) [622-3653LF](#) [63453-116](#) [636-1030](#) [636-1427](#) [636-3427](#) [636-4007](#) [641938-9](#) [65495-038](#) [65692-001LF](#) [65781-018](#)  
[65781-047](#) [65817-010LF](#) [65817-015LF](#) [67095-007LF](#) [67601157](#) [68631-112](#) [68645-018](#) [699319-000](#) [70.362.1628.0](#) [70-4210](#) [70-4226B](#) [70-](#)  
[4853B](#) [71.350.2428.0](#) [733-134](#) [733-162](#) [760-3052](#) [MHR-64-VUAL](#) [80.063.4001.1](#) [800-90-001-10-001000](#) [801-43-002-10-013000](#)  
[801-43-006-10-002000](#) [803-43-024-10-001000](#) [803-93-012-10-001000](#) [8-1437020-4](#) [819-22-004-30-001101](#) [820-22-006-30-001101](#)  
[820-22-008-30-001101](#) [821-22-002-10-001101](#)