

REV	LOCATIONS	DESCRIPTION	DATE	REVISER	APPD

Electrical
Temperature Range—Operating: -25°C~+85°C

Material
Housing: PA66 (UL 94V-0)
Applicable Terminal: FT15001
Mates With(Water): FWF15001,FWF15003,FWF15004,
FWF15005,FWF15007 Series.

Circuits (n)	Part No.	Dimensions(in/mm)		
		A	B	C
2	FHG15001-S02M2W1B	.059(1.50)	.177(4.50)	.169(3.40)
3	FHG15001-S03M2W1B	.118(3.00)	.236(6.00)	.228(4.90)
4	FHG15001-S04M2W1B	.177(4.50)	.295(7.50)	.287(6.40)
5	FHG15001-S05M2W1B	.236(6.00)	.354(9.00)	.346(7.90)
6	FHG15001-S06M2W1B	.295(7.50)	.413(10.50)	.406(9.40)
7	FHG15001-S07M2W1B	.354(9.00)	.472(12.00)	.465(10.90)
8	FHG15001-S08M2W1B	.413(10.50)	.531(13.50)	.524(12.40)
9	FHG15001-S09M2W1B	.472(12.00)	.591(15.00)	.583(13.90)
10	FHG15001-S10M2W1B	.531(13.50)	.650(16.50)	.642(15.40)
11	FHG15001-S11M2W1B	.591(15.00)	.709(18.00)	.701(16.90)
12	FHG15001-S12M2W1B	.650(16.50)	.768(19.50)	.760(18.40)

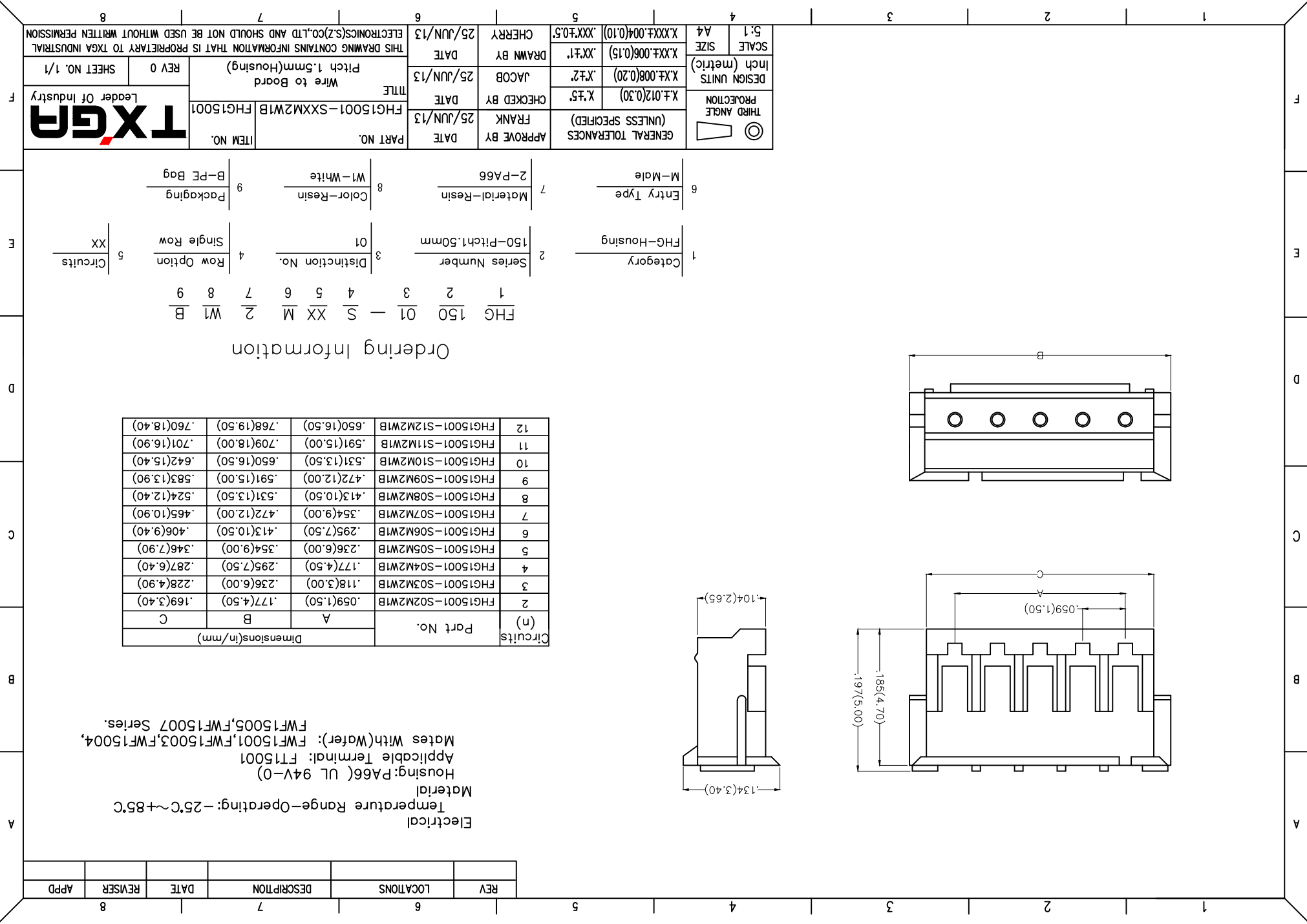
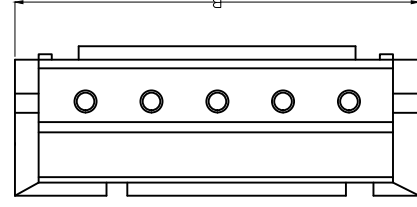
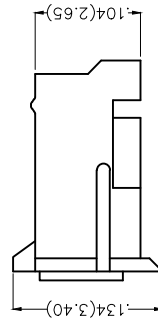
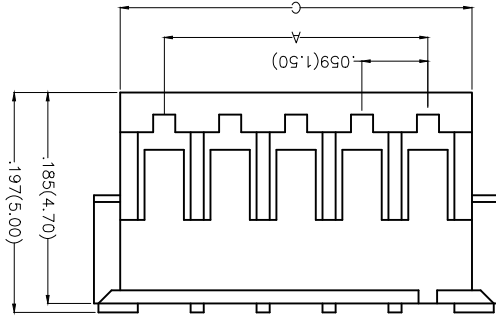
Ordering Information

FHG 150 01 - S XX M 2 W1 B
1 2 3 4 5 6 7 8 9

1	Category	FHG—Housing
2	Series Number	150—Pitch1.50mm
3	Distinction No.	01
4	Row Option	Single Row
5	Circuits	XX

6	Entry Type	M—Male
7	Material—Resin	2—PA66
8	Color—Resin	W1—White
9	Packaging	B—PE Bag

THIRD ANGLE PROJECTION	X.±.012(0.30)	X.±.2	X.±.008(0.20)	X.±.006(0.15)	X.±.004(0.10)	SCALE	5:1
						SIZE	A4
GENERAL TOLERANCES (UNLESS SPECIFIED)	FRANK	DATE	25/JUN/13	APPROVE BY	FRANK	DATE	25/JUN/13
		CHECKED BY	JACOB	DRAWN BY	CHEERY	DATE	25/JUN/13
PART NO. FHG15001-SXXM2W1B							
ITEM NO. FHG15001							
TITLE Wire to Board Pitch 1.5mm(Housing)							
REV 0				SHEET NO. 1/1			
THIS DRAWING CONTAINS INFORMATION THAT IS PROPRIETARY TO TXGA INDUSTRIAL ELECTRONICS(SZ)CO.,LTD AND SHOULD NOT BE USED WITHOUT WRITTEN PERMISSION							



X-ON Electronics

Largest Supplier of Electrical and Electronic Components

Click to view similar products for [Headers & Wire Housings](#) category:

Click to view products by [TXGA](#) manufacturer:

Other Similar products are found below :

[95000-104TRLF](#) [10135584-644402LF](#) [DF62W-EP2022PCA](#) [95000-106TRLF](#) [DF62W-2022SCA](#) [DF62W-EP2022PC](#) [2203348](#) [DF62W-2022SC](#) [1084018](#) [1029039](#) [1084017](#) [802-10-012-10-002000](#) [1112640](#) [1112639](#) [891-007-9SS-BST1T](#) [000-34000](#) [0008550134](#) [0009482033](#) [0009507031](#) [57102-F02-18ULF](#) [57102-S06-03LF](#) [57202-S52-04LF](#) [PCN6-15S-2.5E](#) [0039019024](#) [58102-G61-06LF](#) [582553-1](#) [0009485154](#) [0009508121](#) [0022285053](#) [0050291907](#) [018731A](#) [LY20-4P-DT1-P1E-BR](#) [02.125.8002.8](#) [60101931](#) [60598-1 \(Cut Strip\)](#) [M1625-3R/100](#) [61062-3](#) [61082-181009](#) [CSU011177004](#) [636-1427](#) [638009-1](#) [641938-9](#) [641991-4](#) [644168-1](#) [644827-2](#) [647662-1](#) [65039-019ELF](#) [65692-001LF](#) [65781-018](#) [65781-047](#)