

REV	LOCATIONS	DESCRIPTION	DATE	REVISER	APPD

**SPECIFICATIONS**

**Electrical**

Current Rating: 3.0A AC(rms)/DC  
Voltage Rating: 350V AC(rms)/DC  
Contact Resistance: 20 mΩ Max  
Insulation Resistance: 1000 MΩ MIN  
Withstanding Voltage: 500V AC r.m.s  
Temperature Range-Operating: -25°C~+85°C

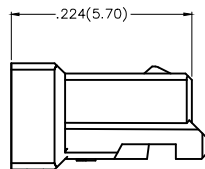
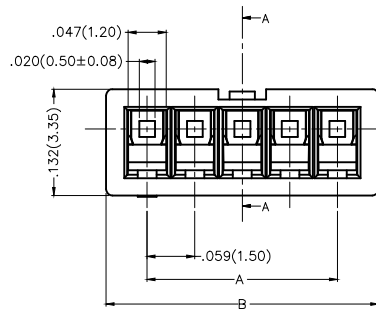
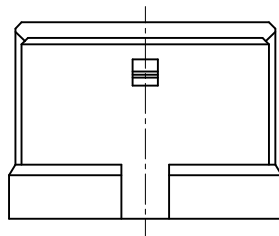
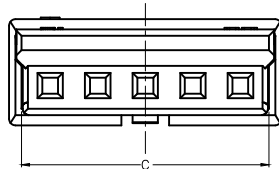
Material: PA66 UL94V-0  
Applicable Terminal: FT15003-F2H  
Mates With: FWF15008 Series


Circuits (n)	Part No.	Dimensions(in/mm)		
		A	B	C
2	FHG15003-S02M2W1B	.059(1.50)	.161(4.10)	.130(3.30)
3	FHG15003-S03M2W1B	.118(3.00)	.220(5.60)	.189(4.80)
4	FHG15003-S04M2W1B	.177(4.50)	.280(7.10)	.248(6.30)
5	FHG15003-S05M2W1B	.236(6.00)	.339(8.60)	.307(7.80)
6	FHG15003-S06M2W1B	.295(7.50)	.398(10.10)	.366(9.30)
7	FHG15003-S07M2W1B	.354(9.00)	.457(11.60)	.425(10.80)
8	FHG15003-S08M2W1B	.413(10.50)	.516(13.10)	.484(12.30)
9	FHG15003-S09M2W1B	.472(12.00)	.574(14.60)	.543(13.80)
10	FHG15003-S10M2W1B	.531(13.50)	.634(16.10)	.602(15.30)
11	FHG15003-S11M2W1B	.590(15.00)	.693(17.60)	.661(16.80)
12	FHG15003-S12M2W1B	.650(16.50)	.751(19.10)	.720(18.30)
13	FHG15003-S13M2W1B	.709(18.00)	.811(20.60)	.780(19.80)
14	FHG15003-S14M2W1B	.768(19.50)	.870(22.10)	.839(21.30)
15	FHG15003-S15M2W1B	.827(21.00)	.929(23.60)	.898(22.80)

**Ordering Information**

FHG 150 03 - S XX M 2 W1 B  
1 2 3 4 5 6 7 8 9

1	Category FHG-Housing	2	Series Number 150-Pitch1.50mm	3	Distinction No. 03	4	Row Option S-Single row		
5	Circuits XX	6	Type M-Male	7	Material-Resin 2-PA66	8	Color-Resin W1-White	9	Packaging B-PE Bag



THIRD ANGLE PROJECTION	GENERAL TOLERANCES (UNLESS SPECIFIED)		APPROVE BY FRANK	DATE 19/JUN/17	PART NO. FHG15003-SXXM2W1B	ITEM NO. FHG15003	 Leader Of Industry
	DESIGN UNITS Inch (metric)	X.X±.012(0.30) X.X±.008(0.20)	X.'±5' X.'±2'	CHECKED BY JACOB	DATE 19/JUN/17	TITLE Wire to Board Pitch 1.5mm(Housing)	
SCALE 5:1	SIZE A4	X.XX±.006(0.15) X.XXX±.004(0.10)	.XX'±1' .XXX'±0.5'	DRAWN BY LXF	DATE 19/JUN/17	REV 1	SHEET NO. 1/1
THIS DRAWING CONTAINS INFORMATION THAT IS PROPRIETARY TO TXGA INDUSTRIAL ELECTRONICS(S.Z)CO.,LTD AND SHOULD NOT BE USED WITHOUT WRITTEN PERMISSION							

## X-ON Electronics

Largest Supplier of Electrical and Electronic Components

*Click to view similar products for [Headers & Wire Housings](#) category:*

*Click to view products by [TXGA](#) manufacturer:*

Other Similar products are found below :

[57102-F02-18ULF](#) [58102-G61-06LF](#) [582553-1](#) [009176003701906](#) [01.001.5753.1](#) [0050291907](#) [02.125.8002.8](#) [609-3404](#) [61062-3](#)  
[CSU011177004](#) [622-0430](#) [622-3653LF](#) [63453-116](#) [636-1030](#) [636-1427](#) [636-3427](#) [636-4007](#) [641938-9](#) [644827-2](#) [65495-038](#) [65692-001LF](#)  
[65781-018](#) [65781-047](#) [65817-010LF](#) [65817-015LF](#) [66207-023LF](#) [67095-007LF](#) [67601157](#) [68631-112](#) [68645-018](#) [699319-000](#)  
[M90C108951C](#) [70.362.1628.0](#) [70-4210](#) [70-4226B](#) [70-4853B](#) [707-5028](#) [71.350.2428.0](#) [71961-016LF](#) [733-134](#) [733-162](#) [754199-000](#) [760-](#)  
[3052](#) [80.063.4001.1](#) [800-90-001-10-001000](#) [800-90-010-10-002000](#) [801-43-002-10-013000](#) [801-43-006-10-002000](#) [803-41-018-10-001000](#)  
[803-43-024-10-001000](#)