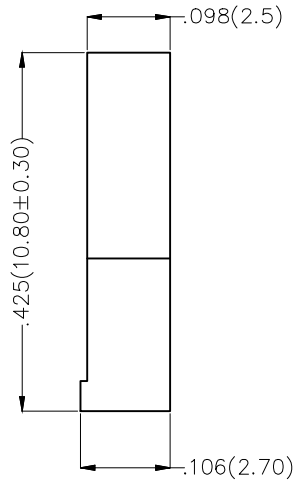
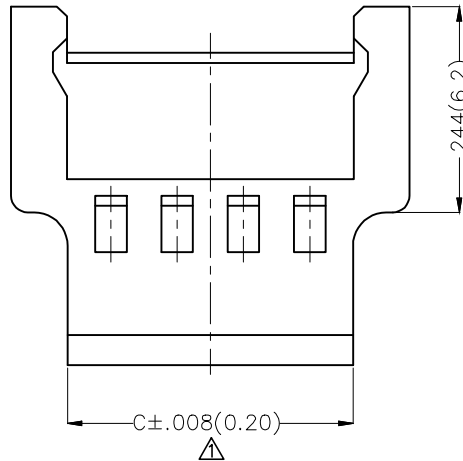
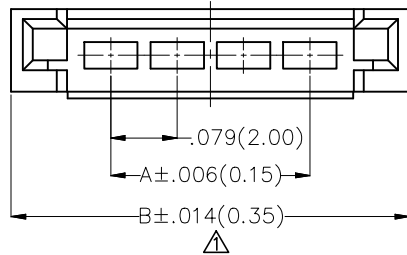


REV	LOCATIONS	DESCRIPTION	DATE	REVISER	APPD
1	△	Size changes	26/APR/21	KATE	JOHNNY

Electrical  
 Temperature Range—Operating: -25°C~+85°C  
 Material  
 Housing: PA66( UL 94V-2)  
 Applicable Terminal: FT20010  
 Mates With(Housing): FHG20011 Series



Circuits (n)	Part No.	Dimensions(in/mm)		
		A	B	C △
2	FHG20012-S02F2W1B	.079(2.00)	.315(8.00)	.181(4.60)
3	FHG20012-S03F2W1B	.157(4.00)	.394(10.00)	.260(6.60)
4	FHG20012-S04F2W1B	.236(6.00)	.472(12.00)	.339(8.60)
5	FHG20012-S05F2W1B	.315(8.00)	.551(14.00)	.417(10.60)
6	FHG20012-S06F2W1B	.394(10.00)	.630(16.00)	.496(12.60)
7	FHG20012-S07F2W1B	.472(12.00)	.709(18.00)	.575(14.60)
8	FHG20012-S08F2W1B	.551(14.00)	.787(20.00)	.654(16.60)

### Ordering Information

FHG 200 12 — S XX F 2 W1 B  
 1 2 3 4 5 6 7 8 9

1 Category FHG-Housing	2 Series Number 200-Pitch2.00mm	3 Distinction No. 12	4 Row Option S-Single Row
5 Circuits XX	6 Type F-Female	7 Material-Resin 2-PA66	8 Color-Resin K6-Black
		9 Packaging B-PE Bag	

 THIRD ANGLE PROJECTION	GENERAL TOLERANCES (UNLESS SPECIFIED)		APPROVE BY FRANK	DATE 25/JUN/13	PART NO. FHG20012-SXXF2W1B	ITEM NO. FHG20012	 Leader Of Industry	
	X.±.012(0.30)	X.'±5'	CHECKED BY JACOB	DATE 25/JUN/13	TITLE Wire to Board Pitch 2.0mm(Housing)			REV 1
	DESIGN UNITS Inch (metric)	X.X±.008(0.20)	X.'±2'	DRAWN BY CHERRY	DATE 25/JUN/13	THIS DRAWING CONTAINS INFORMATION THAT IS PROPRIETARY TO TXGA INDUSTRIAL ELECTRONICS(S.Z)CO.,LTD AND SHOULD NOT BE USED WITHOUT WRITTEN PERMISSION		SHEET NO. 1/1
	SCALE 5:1	SIZE A4	X.XX±.006(0.15)					

## X-ON Electronics

Largest Supplier of Electrical and Electronic Components

*Click to view similar products for [Headers & Wire Housings](#) category:*

*Click to view products by [TXGA](#) manufacturer:*

Other Similar products are found below :

[57102-F02-18ULF](#) [58102-G61-06LF](#) [0009485154](#) [009176003701906](#) [0050291907](#) [02.125.8002.8](#) [609-3404](#) [61062-3](#) [622-0430](#) [622-3653LF](#)  
[63453-116](#) [636-1030](#) [636-1427](#) [636-3427](#) [636-4007](#) [641938-9](#) [644827-2](#) [65495-038](#) [65692-001LF](#) [65781-018](#) [65781-047](#) [65817-010LF](#)  
[65817-015LF](#) [66207-023LF](#) [67016-026LF](#) [67095-007LF](#) [68631-112](#) [68645-018](#) [68648-049](#) [699319-000](#) [70.362.1628.0](#) [70-4210](#) [70-4226B](#)  
[70-4853B](#) [707-5020](#) [707-5028](#) [71.350.2428.0](#) [71961-016LF](#) [733-134](#) [754199-000](#) [760-3052](#) [787-8014-00](#) [FCN-367T-T012/H](#) [80.063.4001.1](#)  
[800-90-010-10-002000](#) [801-43-002-10-013000](#) [801-43-006-10-002000](#) [803-41-018-10-001000](#) [803-43-014-20-001000](#) [803-43-024-10-001000](#)