

REV	LOCATIONS	DESCRIPTION	DATE	REVISER	APPD

Electrical
 Temperature Range-Operating: -25°C~+85°C
 Material

Housing:PA66(UL 94V-0)
 Applicable Terminal: FT25001

Mates With(Water): FWF25001,FWF25002,FWF25016,FWF25018,
 FWF25019,FWF25020,FWF25021Series.

Circuits (n)	Part No.	Dimensions(n/mm)	
		A	B
2	FHG25001-S02M2W1B	.098(2.50)	.224(5.70)
3	FHG25001-S03M2W1B	.197(5.00)	.332(8.20)
4	FHG25001-S04M2W1B	.295(7.50)	.421(10.70)
5	FHG25001-S05M2W1B	.394(10.00)	.520(13.20)
6	FHG25001-S06M2W1B	.492(12.50)	.618(15.70)
7	FHG25001-S07M2W1B	.591(15.00)	.717(18.20)
8	FHG25001-S08M2W1B	.689(17.50)	.815(20.70)
9	FHG25001-S09M2W1B	.787(20.00)	.913(23.20)
10	FHG25001-S10M2W1B	.886(22.50)	1.012(25.70)
11	FHG25001-S11M2W1B	.984(25.00)	1.110(28.20)
12	FHG25001-S12M2W1B	1.083(27.50)	1.209(30.70)
13	FHG25001-S13M2W1B	1.181(30.00)	1.307(33.20)
14	FHG25001-S14M2W1B	1.279(32.50)	1.406(35.70)
15	FHG25001-S15M2W1B	1.378(35.00)	1.504(38.20)
16	FHG25001-S16M2W1B	1.476(37.50)	1.504(40.70)

Ordering Information

FHG 250 01 - S XX M 2 W1 B
 1 2 3 4 5 6 7 8 9

1 Category | FHG-Housing

2 Series Number | 250-Pitch2.50mm

3 Distinction No. | 01

4 Row Option | Single Row

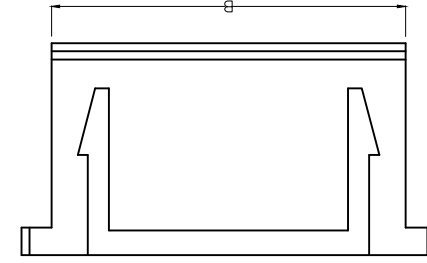
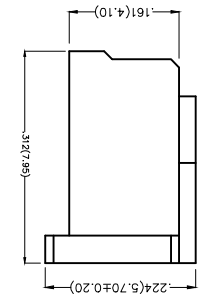
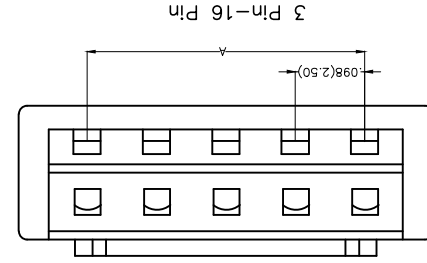
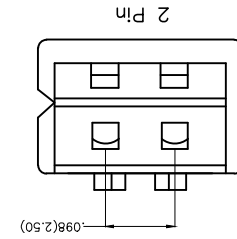
5 Circuits | XX

6 Entry Type | M-Male

7 Material-Resin | 2-PA66

8 Color-Resin | W1-White

9 Packaging | B-PE Bag



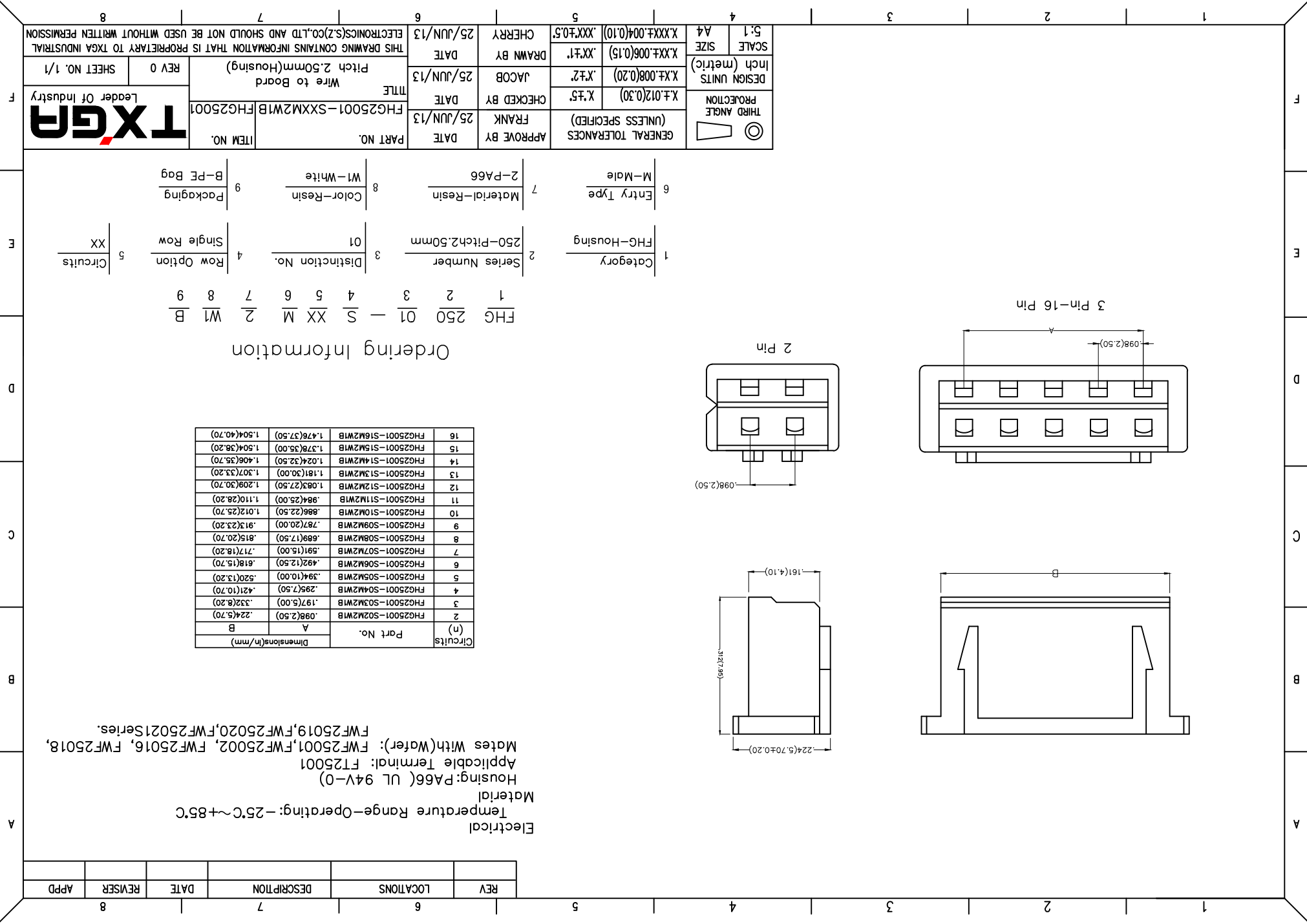
THIRD ANGLE PROJECTION	X.±.012(0.30)	X.±.7	X.±.008(0.20)	X.±.006(0.15)	X.XXX±.004(0.10)
DESIGN UNITS Inch (metric)	X.±.7	X.±.7	X.±.008(0.20)	X.±.006(0.15)	X.XXX±.004(0.10)
SCALE	5:1	A4	A4	A4	A4

GENERAL TOLERANCES (UNLESS SPECIFIED)	APPROVE BY	DATE	PART NO.	ITEM NO.
(UNLESS SPECIFIED)	FRANK	25/JUN/13	FHG25001-SXXM2W1B	FHG25001

CHECKED BY	DATE	TITLE	Wire to Board Pitch 2.50mm(Housing)
JACOB	25/JUN/13	WIRE TO BOARD	

DRAWN BY	DATE	THIS DRAWING CONTAINS INFORMATION THAT IS PROPRIETARY TO TXGA INDUSTRIAL ELECTRONICS(SZ)CO.,LTD AND SHOULD NOT BE USED WITHOUT WRITTEN PERMISSION
CHERRY	25/JUN/13	

TXGA
 Leader Of Industry



X-ON Electronics

Largest Supplier of Electrical and Electronic Components

Click to view similar products for [Headers & Wire Housings](#) category:

Click to view products by [TXGA](#) manufacturer:

Other Similar products are found below :

[95000-104TRLF](#) [10135584-644402LF](#) [DF62W-EP2022PCA](#) [95000-106TRLF](#) [DF62W-2022SCA](#) [DF62W-EP2022PC](#) [2203348](#) [DF62W-2022SC](#) [1084018](#) [1029039](#) [1084017](#) [802-10-012-10-002000](#) [1112640](#) [1112639](#) [891-007-9SS-BST1T](#) [000-34000](#) [0008550134](#) [0009482033](#) [0009507031](#) [57102-F02-18ULF](#) [57102-S06-03LF](#) [57202-S52-04LF](#) [PCN6-15S-2.5E](#) [0039019024](#) [58102-G61-06LF](#) [582553-1](#) [0009485154](#) [0009508121](#) [0022285053](#) [0050291907](#) [018731A](#) [LY20-4P-DT1-P1E-BR](#) [02.125.8002.8](#) [60101931](#) [60598-1 \(Cut Strip\)](#) [M1625-3R/100](#) [61062-3](#) [61082-181009](#) [CSU011177004](#) [636-1427](#) [638009-1](#) [641938-9](#) [641991-4](#) [644168-1](#) [644827-2](#) [647662-1](#) [65039-019ELF](#) [65692-001LF](#) [65781-018](#) [65781-047](#)