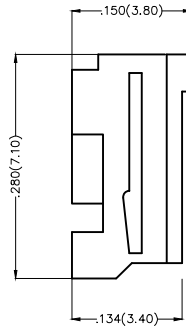
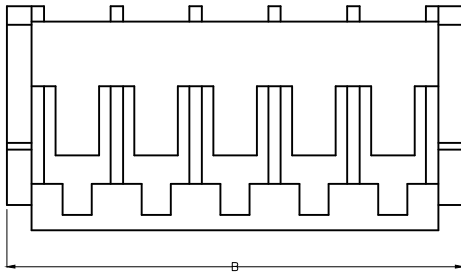
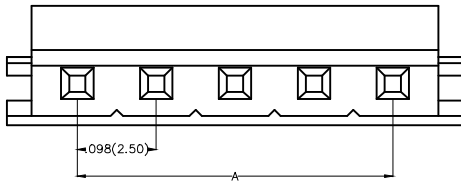


REV	LOCATIONS	DESCRIPTION	DATE	REVISER	APPD

Electrical
 Temperature Range—Operating: -25°C ~ +85°C
 Material
 Housing: PA66(UL 94V-0)
 Applicable Terminal: FT25002
 Mates With(Wafer): FWF25005,FWF25006, FWF25017Series.



Circuits (n)	Part No.	Dimensions(in/mm)	
		A	B
2	FHG25003-S02M2W1B	.098(2.50)	.276(7.00)
3	FHG25003-S03M2W1B	.197(5.00)	.374(9.50)
4	FHG25003-S04M2W1B	.295(7.50)	.472(12.00)
5	FHG25003-S05M2W1B	.394(10.00)	.571(14.50)
6	FHG25003-S06M2W1B	.492(12.50)	.669(17.00)
7	FHG25003-S07M2W1B	.591(15.00)	.768(19.50)
8	FHG25003-S08M2W1B	.689(17.50)	.866(22.00)
9	FHG25003-S09M2W1B	.787(20.00)	.965(24.50)
10	FHG25003-S10M2W1B	.886(22.50)	1.063(27.00)
11	FHG25003-S11M2W1B	.984(25.00)	1.161(29.50)
12	FHG25003-S12M2W1B	1.083(27.50)	1.256(32.00)



Ordering Information

FHG 250 03 - S XX M 2 W1 B
 1 2 3 4 5 6 7 8 9

1	Category FHG-Housing	2	Series Number 250-Pitch2.50mm	3	Distinction No. 03	4	Row Option Single Row	5	Circuits XX
6	Entry Type M-Male	7	Material-Resin 2-PA66	8	Color-Resin W1-White	9	Packaging B-PE Bag		

 THIRD ANGLE PROJECTION	GENERAL TOLERANCES (UNLESS SPECIFIED)		APPROVE BY FRANK	DATE 25/JUL/13	PART NO. FHG25003-SXXM2W1B	ITEM NO. FHG25003	 Leader Of Industry	
	DESIGN UNITS Inch (metric)	X.X±.012(0.30)	X.°±5'	CHECKED BY JACOB	DATE 25/JUL/13	TITLE Wire to Board Pitch 2.50mm(Housing)		REV 0
SCALE 5:1	SIZE A4	X.XX±.006(0.15)	.XX'±1'	DRAWN BY CHERRY	DATE 25/JUL/13	THIS DRAWING CONTAINS INFORMATION THAT IS PROPRIETARY TO TXGA INDUSTRIAL ELECTRONICS(S.Z)CO.,LTD AND SHOULD NOT BE USED WITHOUT WRITTEN PERMISSION		
		X.XXX±.004(0.10)	.XXX'±0.5'					

X-ON Electronics

Largest Supplier of Electrical and Electronic Components

Click to view similar products for [Headers & Wire Housings](#) category:

Click to view products by [TXGA](#) manufacturer:

Other Similar products are found below :

[0015917161](#) [0022155065](#) [57102-F02-18ULF](#) [58102-G61-06LF](#) [582553-1](#) [01.001.5753.1](#) [0050291907](#) [02.125.8002.8](#) [609-3404](#) [61062-3](#)
[CSU011177004](#) [622-0430](#) [622-3653LF](#) [63453-116](#) [636-1030](#) [636-1427](#) [636-3427](#) [636-4007](#) [641938-9](#) [65495-038](#) [65692-001LF](#) [65781-018](#)
[65781-047](#) [65817-010LF](#) [65817-015LF](#) [67095-007LF](#) [67601157](#) [68631-112](#) [68645-018](#) [699319-000](#) [70.362.1628.0](#) [70-4210](#) [70-4226B](#) [70-](#)
[4853B](#) [71.350.2428.0](#) [733-134](#) [733-162](#) [760-3052](#) [MHR-64-VUAL](#) [80.063.4001.1](#) [800-90-001-10-001000](#) [801-43-002-10-013000](#)
[801-43-006-10-002000](#) [803-43-024-10-001000](#) [803-93-012-10-001000](#) [8-1437020-4](#) [819-22-004-30-001101](#) [820-22-006-30-001101](#)
[820-22-008-30-001101](#) [821-22-002-10-001101](#)