

REV	LOCATIONS	DESCRIPTION	DATE	REVISER	APPD

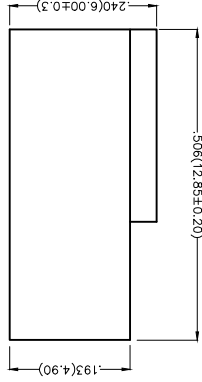
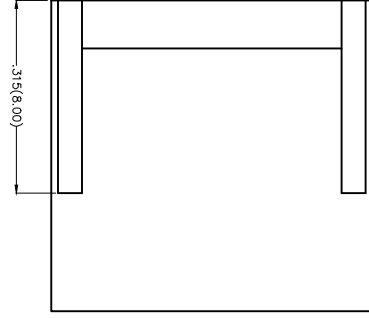
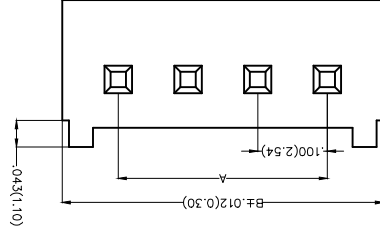
Electrical  
 Temperature Range—Operating: -25°C~+85°C  
 Material  
 Housing:PA66 (UL 94V-0)  
 Applicable Terminal: FT25401  
 Mates With: FWF25401,FWF25402Series

Circuits (n)	Part No.	Dimensions(in/mm)	
		A	B
2	FHG25401-S02M2W1B	.100(2.54)	.228(5.80)
3	FHG25401-S03M2W1B	.200(5.08)	.328(8.34)
4	FHG25401-S04M2W1B	.300(7.62)	.428(10.88)
5	FHG25401-S05M2W1B	.400(10.16)	.525(13.33)
6	FHG25401-S06M2W1B	.500(12.70)	.625(15.87)
7	FHG25401-S07M2W1B	.600(15.24)	.725(18.41)
8	FHG25401-S08M2W1B	.700(17.78)	.825(20.95)
9	FHG25401-S09M2W1B	.800(20.32)	.925(23.49)
10	FHG25401-S10M2W1B	.900(22.86)	1.025(26.03)
11	FHG25401-S11M2W1B	1.000(25.40)	1.125(28.57)
12	FHG25401-S12M2W1B	1.100(27.94)	1.225(31.11)
13	FHG25401-S13M2W1B	1.200(30.48)	1.325(33.65)
14	FHG25401-S14M2W1B	1.300(33.02)	1.425(36.19)
15	FHG25401-S15M2W1B	1.400(35.56)	1.525(38.73)
16	FHG25401-S16M2W1B	1.500(38.10)	1.625(41.27)

### Ordering Information

1 FHG 254 01 - S XX M 2 W1 B  
 2 Series Number  
 3 Distinction No.  
 4 Row Option  
 5 Circuits

- 1 Category FHG-Housing
- 2 254-Pitch,2.54mm
- 3 01
- 4 S-Single row
- 5 XX
- 6 Entry Type M-Male
- 7 Material-Resin Z-PA66
- 8 Color-Resin W1-White
- 9 Packaging B-PF Bag



THIRD ANGLE PROJECTION	DESIGN UNITS Inch (metric)	SCALE 5:1	SIZE A4
X.±.012(0.30)	X.±.008(0.20)	X.XX±.004(0.10)	X.XX±.05
CHECKED BY JACOB	DRAWN BY CHERRY	DATE 25/JUN/13	APPROVE BY FRANK
DATE 25/JUN/13	DATE 25/JUN/13	DATE 25/JUN/13	DATE 25/JUN/13
PART NO. FHG25401-SXXM2W1B	ITEM NO. FHG25401	WIRE TO BOARD PITCH 2.54mm(HOUSING)	REV 0
SHEET NO. 1/1			
THIS DRAWING CONTAINS INFORMATION THAT IS PROPRIETARY TO TXGA INDUSTRIAL ELECTRONICS(SZ)CO.,LTD AND SHOULD NOT BE USED WITHOUT WRITTEN PERMISSION			



REV	LOCATIONS	DESCRIPTION	DATE	REVISER	APPD

Electrical  
 Temperature Range—Operating: -25°C~+85°C  
 Material  
 Housing:PA66( UL 94V-0)  
 Applicable Terminal: FT25401  
 Mates With: FWF25401,FWF25402Series

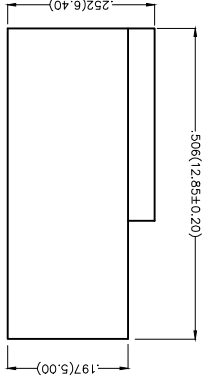
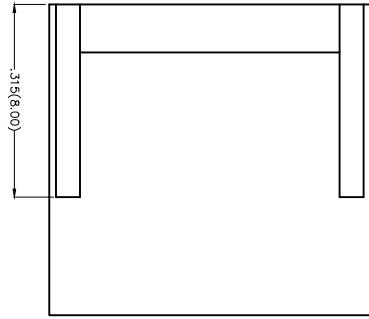
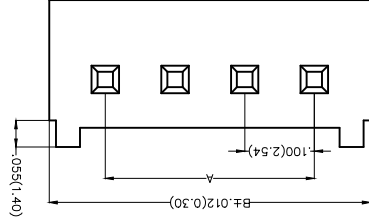
Circuits (n)	Part No.	Dimensions(in/mm)	
		A	B
2	FHG25401-S02M2W5B	.100(2.54)	.228(5.80)
3	FHG25401-S03M2W5B	.200(5.08)	.328(8.34)
4	FHG25401-S04M2W5B	.300(7.62)	.428(10.88)
5	FHG25401-S05M2W5B	.400(10.16)	.525(13.33)
6	FHG25401-S06M2W5B	.500(12.70)	.625(15.87)
7	FHG25401-S07M2W5B	.600(15.24)	.725(18.41)
8	FHG25401-S08M2W5B	.700(17.78)	.825(20.95)
9	FHG25401-S09M2W5B	.800(20.32)	.925(23.49)
10	FHG25401-S10M2W5B	.900(22.86)	1.025(26.03)
11	FHG25401-S11M2W5B	1.000(25.40)	1.125(28.57)
12	FHG25401-S12M2W5B	1.100(27.94)	1.225(31.11)

### Ordering Information

FHG 254 01 - S XX M 2 W5 B  
 1 2 3 4 5 6 7 8 9

- 1 Category FHG-Housing
- 2 Series Number 254-Pitch 2.54mm
- 3 Distinction No. 01
- 4 Row Option S-Single row
- 5 Circuits XX
- 6 Entry Type M-Male
- 7 Material-Resin 2-PA66
- 8 Color-Resin W5-Natural
- 9 Packaging B-PF Bag

THIRD ANGLE PROJECTION	DESIGN UNITS Inch (metric)	SCALE 5:1 A4
GENERAL TOLERANCES (UNLESS SPECIFIED)	X.±.012(0.30)	X.XX±.004(0.10)
APPROVE BY FRANK	DATE 25/JUN/13	CHECKED BY JACOB
DRAWN BY CHERRY	DATE 25/JUN/13	THIS DRAWING CONTAINS INFORMATION THAT IS PROPRIETARY TO TXGA INDUSTRIAL ELECTRONICS(S)ZCO.,LTD AND SHOULD NOT BE USED WITHOUT WRITTEN PERMISSION



## X-ON Electronics

Largest Supplier of Electrical and Electronic Components

*Click to view similar products for [Headers & Wire Housings](#) category:*

*Click to view products by [TXGA](#) manufacturer:*

Other Similar products are found below :

[95000-104TRLF](#) [10135584-644402LF](#) [DF62W-EP2022PCA](#) [95000-106TRLF](#) [DF62W-2022SCA](#) [DF62W-EP2022PC](#) [2203348](#) [DF62W-2022SC](#) [1084018](#) [1029039](#) [1084017](#) [802-10-012-10-002000](#) [1112640](#) [1112639](#) [891-007-9SS-BST1T](#) [000-34000](#) [0008550134](#) [0009482033](#) [0009507031](#) [57102-F02-18ULF](#) [57102-S06-03LF](#) [57202-S52-04LF](#) [PCN6-15S-2.5E](#) [0039019024](#) [58102-G61-06LF](#) [582553-1](#) [0009485154](#) [0009508121](#) [0022285053](#) [0050291907](#) [018731A](#) [LY20-4P-DT1-P1E-BR](#) [02.125.8002.8](#) [60101931](#) [60598-1 \(Cut Strip\)](#) [M1625-3R/100](#) [61062-3](#) [61082-181009](#) [CSU011177004](#) [636-1427](#) [638009-1](#) [641938-9](#) [641991-4](#) [644168-1](#) [644827-2](#) [647662-1](#) [65039-019ELF](#) [65692-001LF](#) [65781-018](#) [65781-047](#)