

REV	LOCATIONS	DESCRIPTION	DATE	REVISER	APPD

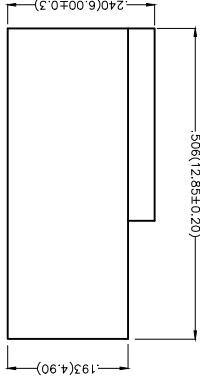
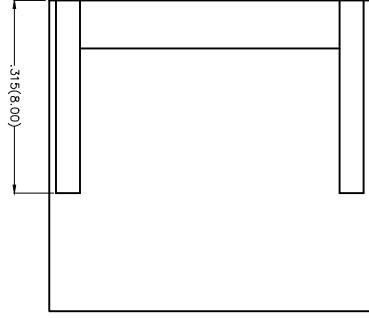
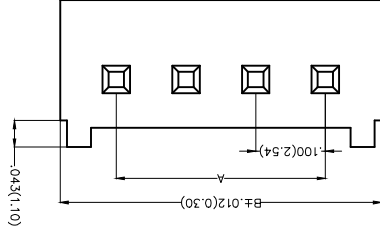
Electrical
 Temperature Range—Operating: -25°C~+85°C
 Material
 Housing: P466 (UL 94V-0)
 Applicable Terminal: FT25401
 Mates With: FWF25401, FWF25402 Series

Circuits (n)	Part No.	Dimensions(in/mm)	
		A	B
2	FHG25401-S02M2W1B	.100(2.54)	.228(5.80)
3	FHG25401-S03M2W1B	.200(5.08)	.328(8.34)
4	FHG25401-S04M2W1B	.300(7.62)	.428(10.88)
5	FHG25401-S05M2W1B	.400(10.16)	.525(13.33)
6	FHG25401-S06M2W1B	.500(12.70)	.625(15.87)
7	FHG25401-S07M2W1B	.600(15.24)	.725(18.41)
8	FHG25401-S08M2W1B	.700(17.78)	.825(20.95)
9	FHG25401-S09M2W1B	.800(20.32)	.925(23.49)
10	FHG25401-S10M2W1B	.900(22.86)	1.025(26.03)
11	FHG25401-S11M2W1B	1.000(25.40)	1.125(28.57)
12	FHG25401-S12M2W1B	1.100(27.94)	1.225(31.11)
13	FHG25401-S13M2W1B	1.200(30.48)	1.325(33.65)
14	FHG25401-S14M2W1B	1.300(33.02)	1.425(36.19)
15	FHG25401-S15M2W1B	1.400(35.56)	1.525(38.73)
16	FHG25401-S16M2W1B	1.500(38.10)	1.625(41.27)

Ordering Information

1 FHG 254 01 - S XX M 2 W1 B
 2 Series Number
 3 Distinction No.
 4 Row Option
 5 Circuits

- 1 Category FHG-Housing
- 2 254-Pitch, 2.54mm
- 3 Color-Resin W1-White
- 4 Material-Resin Z-PA66
- 5 Entry Type M-Male
- 6 Packaging B-PF Bag



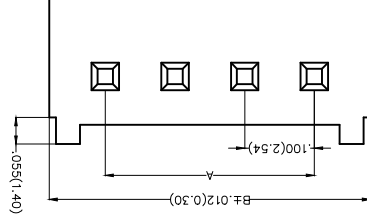
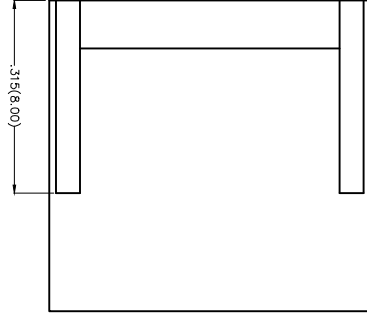
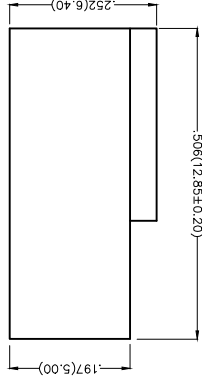
THIRD ANGLE PROJECTION	DESIGN UNITS Inch (metric)	SCALE 5:1 A4	GENERAL TOLERANCES (UNLESS SPECIFIED)	DATE 25/JUN/13	APPROVE BY FRANK	DATE 25/JUN/13	ITEM NO.	DATE 25/JUN/13	WIRE TO BOARD PITCH 2.54mm(HOUSING)	REV 0	SHEET NO. 1/1
X.±.012(0.30)	X.±.008(0.20)	X.XX±.006(0.15)	X.XX±.004(0.10)	X.±.5	X.±.2	X.XX±.1	FHG25401-SXXM2W1B	JACOB	CHERRY	25/JUN/13	THIS DRAWING CONTAINS INFORMATION THAT IS PROPRIETARY TO TXGA INDUSTRIAL ELECTRONICS(SZ)CO.,LTD AND SHOULD NOT BE USED WITHOUT WRITTEN PERMISSION



REV	LOCATIONS	DESCRIPTION	DATE	REVISER	APPD

Electrical
 Temperature Range—Operating: -25°C~+85°C
 Material
 Housing:PA66(UL 94V-0)
 Applicable Terminal: FT25401
 Mates With: FWF25401,FWF25402Series

Circuits (n)	Part No.	Dimensions(in/mm)
2	FHG25401-S02M2W5B	.228(5.80)
	FHG25401-S03M2W5B	.328(8.34)
4	FHG25401-S04M2W5B	.428(10.88)
	FHG25401-S05M2W5B	.525(13.33)
6	FHG25401-S06M2W5B	.625(15.87)
	FHG25401-S07M2W5B	.725(18.41)
8	FHG25401-S08M2W5B	.825(20.95)
	FHG25401-S09M2W5B	.925(23.49)
10	FHG25401-S10M2W5B	1.025(26.03)
	FHG25401-S11M2W5B	1.125(28.57)
12	FHG25401-S12M2W5B	1.225(31.11)



FHG 254 01 - S XX M 2 W5 B
 1 2 3 4 5 6 7 8 9

Ordering Information

- 1 Category FHG-Housing
- 2 Series Number 254-Pitch 2.54mm
- 3 Distinction No. 01
- 4 Row Option S-Single row
- 5 Circuits XX

- 6 Entry Type M-Male
- 7 Material-Resin 2-PA66
- 8 Color-Resin W5-Natural
- 9 Packaging B-PF Bag

THIRD ANGLE PROJECTION	DESIGN UNITS Inch (metric)	SCALE 5:1 A4
X.±.012(0.30)	X.±.008(0.20)	X.XX±.004(0.10)
X.±.7	X.±.7	.XX±.1
APPROVE BY FRANK	CHECKED BY JACOB	DRAWN BY CHERRY
DATE 25/JUN/13	DATE 25/JUN/13	DATE 25/JUN/13
GENERAL TOLERANCES (UNLESS SPECIFIED)	WIRE TO BOARD PITCH 2.54mm(Housing)	THIS DRAWING CONTAINS INFORMATION THAT IS PROPRIETARY TO TXGA INDUSTRIAL ELECTRONICS(S)ZCO.,LTD AND SHOULD NOT BE USED WITHOUT WRITTEN PERMISSION

TXGA
 Leader Of Industry

X-ON Electronics

Largest Supplier of Electrical and Electronic Components

Click to view similar products for [Headers & Wire Housings](#) category:

Click to view products by [TXGA](#) manufacturer:

Other Similar products are found below :

[95000-104TRLF](#) [10135584-644402LF](#) [DF62W-EP2022PCA](#) [95000-106TRLF](#) [DF62W-2022SCA](#) [DF62W-EP2022PC](#) [2203348](#) [DF62W-2022SC](#) [1084018](#) [1029039](#) [1084017](#) [802-10-012-10-002000](#) [1112640](#) [1112639](#) [891-007-9SS-BST1T](#) [000-34000](#) [0008550134](#) [0009482033](#) [0009507031](#) [57102-F02-18ULF](#) [57102-S06-03LF](#) [57202-S52-04LF](#) [PCN6-15S-2.5E](#) [0039019024](#) [58102-G61-06LF](#) [582553-1](#) [0009485154](#) [0009508121](#) [0022285053](#) [0050291907](#) [018731A](#) [LY20-4P-DT1-P1E-BR](#) [02.125.8002.8](#) [60101931](#) [60598-1 \(Cut Strip\)](#) [M1625-3R/100](#) [61062-3](#) [61082-181009](#) [CSU011177004](#) [636-1427](#) [638009-1](#) [641938-9](#) [641991-4](#) [644168-1](#) [644827-2](#) [647662-1](#) [65039-019ELF](#) [65692-001LF](#) [65781-018](#) [65781-047](#)