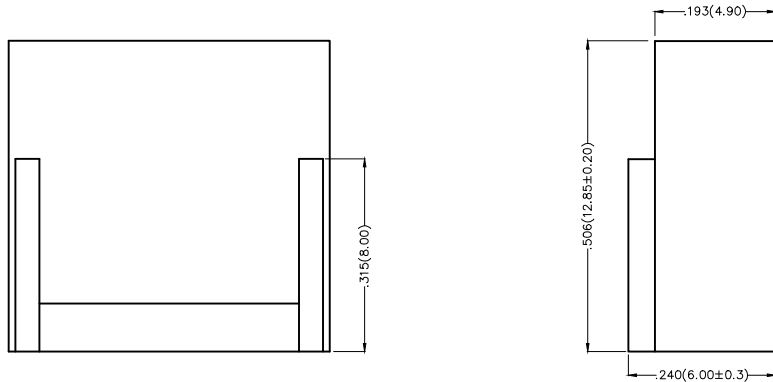
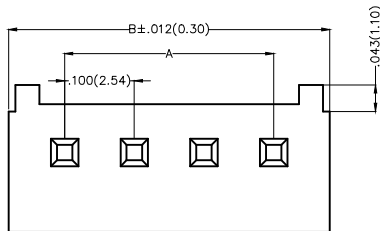


REV	LOCATIONS	DESCRIPTION	DATE	REVISER	APPD

Electrical
 Temperature Range—Operating: -25°C ~ +85°C
 Material
 Housing: PA66(UL 94V-0)
 Applicable Terminal: FT25401
 Mates With: FWF25401,FWF25402Series



Circuits (n)	Part No.	Dimensions(in/mm)	
		A	B
2	FHG25401-S02M2W1B	.100(2.54)	.228(5.80)
3	FHG25401-S03M2W1B	.200(5.08)	.328(8.34)
4	FHG25401-S04M2W1B	.300(7.62)	.428(10.88)
5	FHG25401-S05M2W1B	.400(10.16)	.525(13.33)
6	FHG25401-S06M2W1B	.500(12.70)	.625(15.87)
7	FHG25401-S07M2W1B	.600(15.24)	.725(18.41)
8	FHG25401-S08M2W1B	.700(17.78)	.825(20.95)
9	FHG25401-S09M2W1B	.800(20.32)	.925(23.49)
10	FHG25401-S10M2W1B	.900(22.86)	1.025(26.03)
11	FHG25401-S11M2W1B	1.000(25.40)	1.125(28.57)
12	FHG25401-S12M2W1B	1.100(27.94)	1.225(31.11)
13	FHG25401-S13M2W1B	1.200(30.48)	1.325(33.65)
14	FHG25401-S14M2W1B	1.300(33.02)	1.425(36.19)
15	FHG25401-S15M2W1B	1.400(35.56)	1.525(38.73)
16	FHG25401-S16M2W1B	1.500(38.10)	1.625(41.27)



Ordering Information

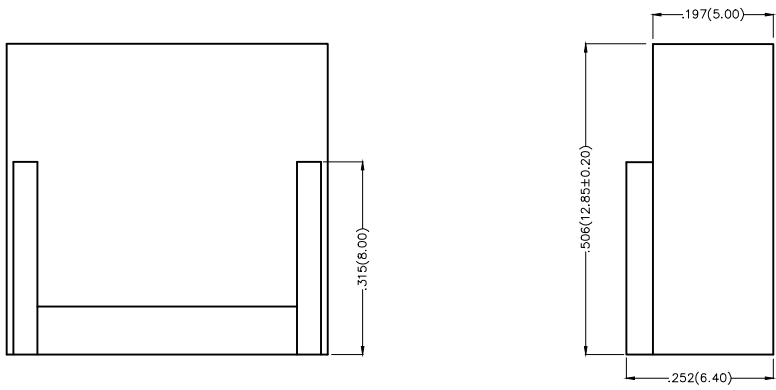
FHG 254 01 — S XX M 2 W1 B
 1 2 3 4 5 6 7 8 9

1 Category FHG—Housing	2 Series Number 254—Pitch2.54mm	3 Distinction No. 01	4 Row Option S—Single row	5 Circuits XX
6 Entry Type M—Male	7 Material—Resin 2—PA66	8 Color—Resin W1—White	9 Packaging B—PE Bag	

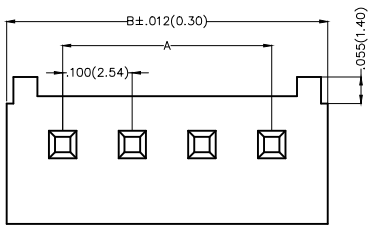
 THIRD ANGLE PROJECTION	GENERAL TOLERANCES (UNLESS SPECIFIED)		APPROVE BY FRANK	DATE 25/JUN/13	PART NO. FHG25401-SXXM2W1B	ITEM NO. FHG25401	 Leader Of Industry	
	DESIGN UNITS Inch (metric)	X.±.012(0.30)	X.±5'	CHECKED BY JACOB	DATE 25/JUN/13	TITLE Wire to Board Pitch 2.54mm(Housing)		REV 0
SCALE 5:1	SIZE A4	X.XX±.006(0.15)	.XX±1'	DRAWN BY CHERRY	DATE 25/JUN/13	THIS DRAWING CONTAINS INFORMATION THAT IS PROPRIETARY TO TXGA INDUSTRIAL ELECTRONICS(S.Z)CO.,LTD AND SHOULD NOT BE USED WITHOUT WRITTEN PERMISSION		
		X.XXX±.004(0.10)	.XXX±0.5'					

REV	LOCATIONS	DESCRIPTION	DATE	REVISER	APPD

Electrical
 Temperature Range—Operating: -25°C ~ +85°C
 Material
 Housing: PA66(UL 94V-0)
 Applicable Terminal: FT25401
 Mates With: FWF25401,FWF25402Series



Circuits (n)	Part No.	Dimensions(in/mm)	
		A	B
2	FHG25401-S02M2W5B	.100(2.54)	.228(5.80)
3	FHG25401-S03M2W5B	.200(5.08)	.328(8.34)
4	FHG25401-S04M2W5B	.300(7.62)	.428(10.88)
5	FHG25401-S05M2W5B	.400(10.16)	.525(13.33)
6	FHG25401-S06M2W5B	.500(12.70)	.625(15.87)
7	FHG25401-S07M2W5B	.600(15.24)	.725(18.41)
8	FHG25401-S08M2W5B	.700(17.78)	.825(20.95)
9	FHG25401-S09M2W5B	.800(20.32)	.925(23.49)
10	FHG25401-S10M2W5B	.900(22.86)	1.025(26.03)
11	FHG25401-S11M2W5B	1.000(25.40)	1.125(28.57)
12	FHG25401-S12M2W5B	1.100(27.94)	1.225(31.11)



Ordering Information

FHG 254 01 — S XX M 2 W5 B
 1 2 3 4 5 6 7 8 9

1 Category FHG-Housing	2 Series Number 254-Pitch2.54mm	3 Distinction No. 01	4 Row Option S-Single row	5 Circuits XX
6 Entry Type M-Male	7 Material-Resin 2-PA66	8 Color-Resin W5-Natural	9 Packaging B-PE Bag	

 THIRD ANGLE PROJECTION	GENERAL TOLERANCES (UNLESS SPECIFIED)		APPROVE BY FRANK	DATE 25/JUN/13	PART NO. FHG25401-SXXM2W5B	ITEM NO. FHG25401	 Leader Of Industry	
	DESIGN UNITS Inch (metric)	X.±.012(0.30)	X.±5'	CHECKED BY JACOB	DATE 25/JUN/13	TITLE Wire to Board Pitch 2.54mm(Housing)		REV 0
SCALE 5:1	SIZE A4	X.XX±.006(0.15)	.XX'±1'	DRAWN BY CHERRY	DATE 25/JUN/13	THIS DRAWING CONTAINS INFORMATION THAT IS PROPRIETARY TO TXGA INDUSTRIAL ELECTRONICS(S.Z)CO.,LTD AND SHOULD NOT BE USED WITHOUT WRITTEN PERMISSION		
		X.XXX±.004(0.10)	.XXX'±0.5'					

X-ON Electronics

Largest Supplier of Electrical and Electronic Components

Click to view similar products for [Headers & Wire Housings](#) category:

Click to view products by [TXGA](#) manufacturer:

Other Similar products are found below :

[0015917161](#) [0022155065](#) [57102-F02-18ULF](#) [58102-G61-06LF](#) [582553-1](#) [01.001.5753.1](#) [0050291907](#) [02.125.8002.8](#) [609-3404](#) [61062-3](#)
[CSU011177004](#) [622-0430](#) [622-3653LF](#) [63453-116](#) [636-1030](#) [636-1427](#) [636-3427](#) [636-4007](#) [641938-9](#) [65495-038](#) [65692-001LF](#) [65781-018](#)
[65781-047](#) [65817-010LF](#) [65817-015LF](#) [67095-007LF](#) [67601157](#) [68631-112](#) [68645-018](#) [699319-000](#) [70.362.1628.0](#) [70-4210](#) [70-4226B](#) [70-](#)
[4853B](#) [71.350.2428.0](#) [733-134](#) [733-162](#) [760-3052](#) [MHR-64-VUAL](#) [80.063.4001.1](#) [800-90-001-10-001000](#) [801-43-002-10-013000](#)
[801-43-006-10-002000](#) [803-43-024-10-001000](#) [803-93-012-10-001000](#) [8-1437020-4](#) [819-22-004-30-001101](#) [820-22-006-30-001101](#)
[820-22-008-30-001101](#) [821-22-002-10-001101](#)