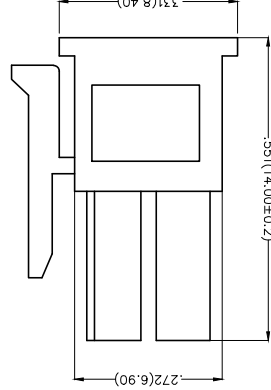
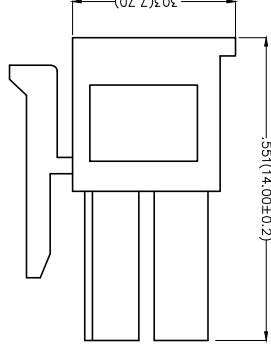
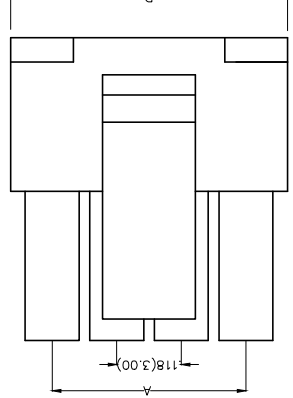
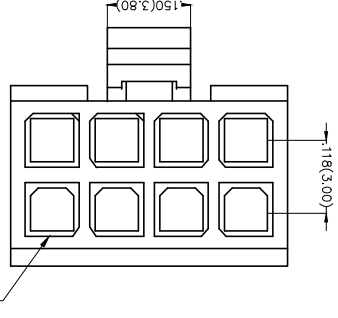


REV	LOCATIONS	DESCRIPTION	DATE	REVERSER	APPD

Electrical  
 Temperature Range-Operating: -40°C~+105°C  
 Housing: PA66(UL 94V-0)  
 Applicable Terminal: FT30001  
 Mates With: FHG30003Series

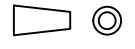
Circuits (n)	Part No.	Dimension(in/mm)	
		A	B
2	FHG30001-D02M2K6B	.118(3.00)	.152(3.85)
4	FHG30001-D04M2K6B	.118(3.00)	.270(6.85)
6	FHG30001-D06M2K6B	.236(6.00)	.368(9.35)
8	FHG30001-D08M2K6B	.354(9.00)	.506(12.85)
10	FHG30001-D10M2K6B	.472(12.00)	.624(15.85)
12	FHG30001-D12M2K6B	.591(15.00)	.742(18.85)
14	FHG30001-D14M2K6B	.709(18.00)	.860(21.85)
16	FHG30001-D16M2K6B	.827(21.00)	.978(24.85)
18	FHG30001-D18M2K6B	.945(24.00)	1.096(27.85)
20	FHG30001-D20M2K6B	1.063(27.00)	1.215(30.85)
22	FHG30001-D22M2K6B	1.181(30.00)	1.333(33.85)
24	FHG30001-D24M2K6B	1.299(33.00)	1.451(36.85)



### Ordering Information

FHG 300 01 - D XX M 2 K 6 B  
 1 2 3 4 5 6 7 8 9

- 1 Category FHG-Housing
- 2 Series Number 300-Pitch 3.0mm
- 3 Distinction No. 01
- 4 Row Option D-Double Row
- 5 Circuits XX
- 6 Entry Type M-Male
- 7 Material-Resin 2-PA66
- 8 Color-Resin K6-Black
- 9 Packaging B-PE Bag



THIRD ANGLE PROJECTION

DESIGN UNITS Inch (metric)

SCALE 5:1 SIZE A4

GENERAL TOLERANCES (UNLESS SPECIFIED)  
 APPROVE BY FRANK DATE 25/JUN/13  
 CHECKED BY JACOB DATE 25/JUN/13  
 DRAWN BY CHERRY DATE 25/JUN/13

THIS DRAWING CONTAINS INFORMATION THAT IS PROPRIETARY TO TXGA INDUSTRIAL ELECTRONICS(Z)CO.,LTD AND SHOULD NOT BE USED WITHOUT WRITTEN PERMISSION



PART NO. FHG30001-DXXM2K6B  
 ITEM NO. FHG30001  
 TITLE Wire to Board Pitch 3.0mm(Housing)  
 REV 0 SHEET NO. 1/1

## X-ON Electronics

Largest Supplier of Electrical and Electronic Components

*Click to view similar products for [Headers & Wire Housings](#) category:*

*Click to view products by [TXGA](#) manufacturer:*

Other Similar products are found below :

[95000-104TRLF](#) [10135584-644402LF](#) [DF62W-EP2022PCA](#) [95000-106TRLF](#) [DF62W-2022SCA](#) [DF62W-EP2022PC](#) [2203348](#) [DF62W-2022SC](#) [1084018](#) [1029039](#) [1084017](#) [802-10-012-10-002000](#) [1112640](#) [1112639](#) [891-007-9SS-BST1T](#) [000-34000](#) [0008550134](#) [0009482033](#) [0009507031](#) [57102-F02-18ULF](#) [57102-S06-03LF](#) [57202-S52-04LF](#) [PCN6-15S-2.5E](#) [0039019024](#) [58102-G61-06LF](#) [582553-1](#) [0009485154](#) [0009508121](#) [0022285053](#) [0050291907](#) [018731A](#) [LY20-4P-DT1-P1E-BR](#) [02.125.8002.8](#) [60101931](#) [60598-1 \(Cut Strip\)](#) [M1625-3R/100](#) [61062-3](#) [61082-181009](#) [CSU011177004](#) [636-1427](#) [638009-1](#) [641938-9](#) [641991-4](#) [644168-1](#) [644827-2](#) [647662-1](#) [65039-019ELF](#) [65692-001LF](#) [65781-018](#) [65781-047](#)