

REV	LOCATIONS	DESCRIPTION	DATE	REVISER	APPD

Notes

- Material: P A66 UL94V-2
- Temperature Range-Operating: -25°C ~ +85°C
- Applicable Terminal: FT39601-F2H
- Mates With: FWF39601, FWF39602, FWF39605 Series.

Circuits	Part No.	Dimensions(in/mm)	
		A	B
2	FHG39601-S02M2WB	.156(3.96)	.325(8.25)
3	FHG39601-S03M2WB	.312(7.92)	.481(12.21)
4	FHG39601-S04M2WB	.468(11.88)	.637(16.17)
5	FHG39601-S05M2WB	.624(15.84)	.793(20.13)
6	FHG39601-S06M2WB	.780(19.80)	.948(24.09)
7	FHG39601-S07M2WB	.935(23.76)	1.104(28.05)
8	FHG39601-S08M2WB	1.091(27.72)	1.260(32.01)
9	FHG39601-S09M2WB	1.247(31.68)	1.416(35.97)
10	FHG39601-S10M2WB	1.403(35.64)	1.572(39.93)
11	FHG39601-S11M2WB	1.559(39.60)	1.728(43.89)
12	FHG39601-S12M2WB	1.715(43.56)	1.884(47.85)

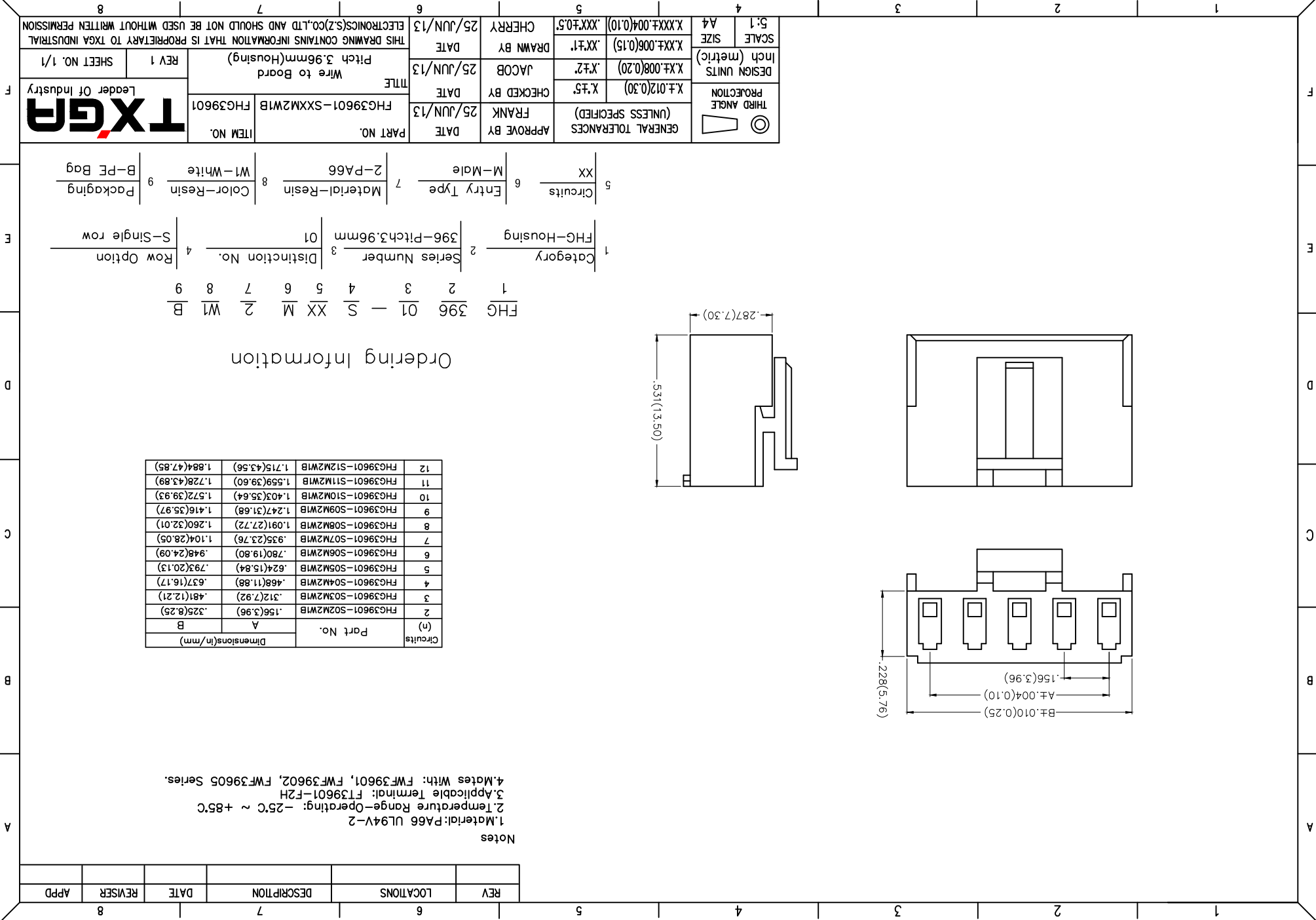
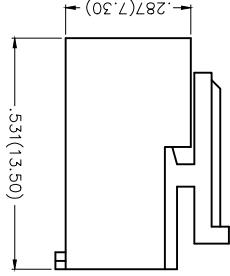
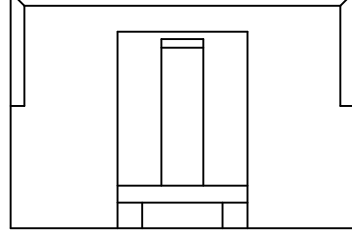
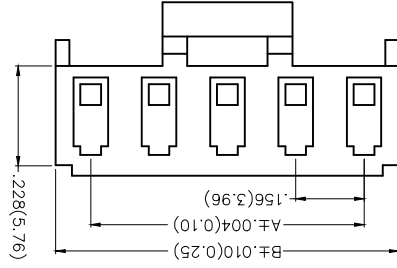
Ordering Information

FHG 396 01 - S XX M 2 W1 B
 1 2 3 4 5 6 7 8 9

1 Category 2 Series Number 3 Distinction No. 4 Row Option
 5 Circuits 6 Entry Type 7 Material-Resin 8 Color-Resin 9 Packaging
 1 FHG-Housing 2 396-Pitch 3.96mm 4 S-Single row

5 XX
 6 M-Male
 7 2-P A66
 8 W1-White
 9 B-PF Bag

GENERAL TOLERANCES (UNLESS SPECIFIED)		APPROVE BY	DATE	PART NO.	ITEM NO.
X.±.012(0.30)		FRANK	25/JUN/13	FHG39601-SXXM2WB	FHG39601
X.±.008(0.20)		CHECKED BY	DATE	TITLE	Wire to Board
X.XX±.006(0.15)		JACOB	25/JUN/13	Pitch 3.96mm(Housing)	REV 1 SHEET NO. 1/1
X.XX±.05		DRAWN BY	DATE	THIS DRAWING CONTAINS INFORMATION THAT IS PROPRIETARY TO TXGA INDUSTRIAL ELECTRONICS(SZ)CO.,LTD AND SHOULD NOT BE USED WITHOUT WRITTEN PERMISSION	
SCALE	SIZE	CHERRY	25/JUN/13		
5:1	A4				



X-ON Electronics

Largest Supplier of Electrical and Electronic Components

Click to view similar products for [Headers & Wire Housings](#) category:

Click to view products by [TXGA](#) manufacturer:

Other Similar products are found below :

[95000-104TRLF](#) [10135584-644402LF](#) [DF62W-EP2022PCA](#) [95000-106TRLF](#) [DF62W-2022SCA](#) [DF62W-EP2022PC](#) [2203348](#) [DF62W-2022SC](#) [1084018](#) [1029039](#) [1084017](#) [802-10-012-10-002000](#) [1112640](#) [1112639](#) [891-007-9SS-BST1T](#) [000-34000](#) [0008550134](#) [0009482033](#) [0009507031](#) [57102-F02-18ULF](#) [57102-S06-03LF](#) [57202-S52-04LF](#) [PCN6-15S-2.5E](#) [0039019024](#) [58102-G61-06LF](#) [582553-1](#) [0009485154](#) [0009508121](#) [0022285053](#) [0050291907](#) [018731A](#) [LY20-4P-DT1-P1E-BR](#) [02.125.8002.8](#) [60101931](#) [60598-1 \(Cut Strip\)](#) [M1625-3R/100](#) [61062-3](#) [61082-181009](#) [CSU011177004](#) [636-1427](#) [638009-1](#) [641938-9](#) [641991-4](#) [644168-1](#) [644827-2](#) [647662-1](#) [65039-019ELF](#) [65692-001LF](#) [65781-018](#) [65781-047](#)