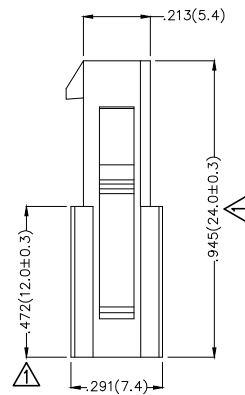
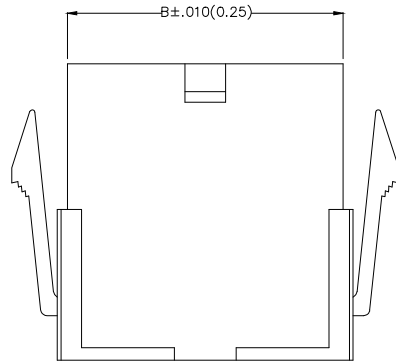
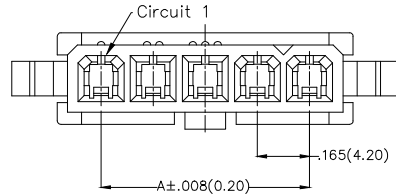


REV	LOCATIONS	DESCRIPTION	DATE	REVISER	APPD
1		Size change	10/JUL/20	KATE	CHERRY

Notes

- 1.Material:PA66 UL94V-2
- 2.Temperature Range-Operating: -40C° ~ +105C°
- 3.Applicable Terminal: FT42002B
- 4.Mates With: FHG42003Series.



Circuits (n)	Part No.	Dimensions(in/mm)	
		A	B
2	FHG42004-S02F2TB	.165(4.20)	.379(9.60)
3	FHG42004-S03F2TB	.331(8.40)	.543(13.80)
4	FHG42004-S04F2TB	.496(12.60)	.709(18.00)
5	FHG42004-S05F2TB	.661(16.80)	.874(22.20)

Ordering Information

FHG 420 04 — S XX F 2 T B
 1 2 3 4 5 6 7 8 9

1	Category FHG-Housing	2	Series Number 420-Pitch4.2mm	3	Distinction No. 04	4	Row Option S-Single row	5	Circuits XX
6	Entry Type F-Female	7	Material-Resin 2-PA66	8	Color-Resin T-Transparent	9	Packaging B-PE Bag		

	GENERAL TOLERANCES (UNLESS SPECIFIED)		APPROVE BY FRANK	DATE 25/JUN/13	PART NO. FHG42004-SXXF2TB	ITEM NO. FHG42004		Leader Of Industry
	DESIGN UNITS Inch (metric)	X.±.012(0.30)	X.'±5'	CHECKED BY JACOB	DATE 25/JUN/13	TITLE Wire to Board Pitch 4.2mm(Housing)		
SCALE 5:1	SIZE A4	X.XX±.008(0.20)	X.'±2'	DRAWN BY CHERRY	DATE 25/JUN/13	THIS DRAWING CONTAINS INFORMATION THAT IS PROPRIETARY TO TXGA INDUSTRIAL ELECTRONICS(S.Z)CO.,LTD AND SHOULD NOT BE USED WITHOUT WRITTEN PERMISSION		
		X.XX±.006(0.15)	.XX'±1'					
		X.XXX±.004(0.10)	.XXX'±0.5'					

X-ON Electronics

Largest Supplier of Electrical and Electronic Components

Click to view similar products for [Headers & Wire Housings](#) category:

Click to view products by [TXGA](#) manufacturer:

Other Similar products are found below :

[57102-F02-18ULF](#) [58102-G61-06LF](#) [0009485154](#) [009176003701906](#) [0050291907](#) [02.125.8002.8](#) [609-3404](#) [61062-3](#) [622-0430](#) [622-3653LF](#)
[63453-116](#) [636-1030](#) [636-1427](#) [636-3427](#) [636-4007](#) [641938-9](#) [644827-2](#) [65495-038](#) [65692-001LF](#) [65781-018](#) [65781-047](#) [65817-010LF](#)
[65817-015LF](#) [66207-023LF](#) [67016-026LF](#) [67095-007LF](#) [68631-112](#) [68645-018](#) [68648-049](#) [699319-000](#) [70.362.1628.0](#) [70-4210](#) [70-4226B](#)
[70-4853B](#) [707-5020](#) [707-5028](#) [71.350.2428.0](#) [71961-016LF](#) [733-134](#) [754199-000](#) [760-3052](#) [787-8014-00](#) [FCN-367T-T012/H](#) [80.063.4001.1](#)
[800-90-010-10-002000](#) [801-43-002-10-013000](#) [801-43-006-10-002000](#) [803-41-018-10-001000](#) [803-43-014-20-001000](#) [803-43-024-10-001000](#)