

REV	LOCATIONS	DESCRIPTION	DATE	REVISER	APPD

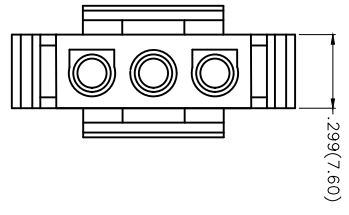
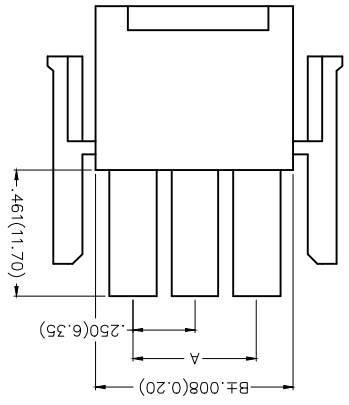
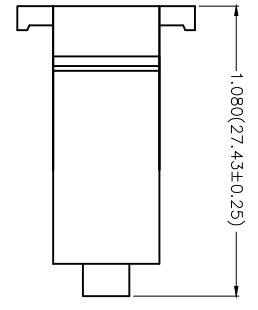
Electrical
 Temperature Range—Operating: -25°C~+85°C
 Material
 Housing: PA66 (UL 94V-0)
 Applicable Terminal: FT63502-F2H
 Mates With: FWF63501Series.

Circuits (n)	Part No.	Dimensions(in/mm)	
2	FHG63501-S02M2TB	A	B
		.250(6.35)	.551(14.00)
3	FHG63501-S03M2TB	A	B
		.500(12.70)	.799(20.30)
4	FHG63501-S04M2TB	A	B
		.744(19.05)	1.051(26.70)
5	FHG63501-S05M2TB	A	B
		1.000(25.40)	1.301(33.05)

Ordering Information

FHG 635 01 - S XX M 2 I B
 1 2 3 4 5 6 7 8 9

- 1 Category FHG—Housing
- 2 Series Number 635—Pitch6.35mm
- 3 Distinction No. 01
- 4 Row Option Single Row
- 5 Circuits XX
- 6 Entry Type M—Male
- 7 Material—Resin 2-PA66
- 8 Color—Resin T—Transparent
- 9 Packaging B—PE Bag



THIRD ANGLE PROJECTION	DESIGN UNITS Inch (metric)	SCALE 5:1 A4
------------------------	----------------------------	--------------

GENERAL TOLERANCES (UNLESS SPECIFIED)	X.±.012(0.30)	X.±.2	X.XX±.006(0.15)	X.XX±.004(0.10)
APPROVE BY	DATE	CHECKED BY	DATE	DRAWN BY
FRANK	18/JUN/13	JACOB	18/JUN/13	CHERRY

ITEM NO.	PART NO.	TITLE	WIRE TO BOARD PITCH 6.35mm(HOUSING)	REV 0	SHEET NO. 1/1
FHG63501	FHG63501-SXXM2TB	FHG63501			

THIS DRAWING CONTAINS INFORMATION THAT IS PROPRIETARY TO TXGA INDUSTRIAL ELECTRONICS(SZ)CO.,LTD AND SHOULD NOT BE USED WITHOUT WRITTEN PERMISSION



X-ON Electronics

Largest Supplier of Electrical and Electronic Components

Click to view similar products for [Headers & Wire Housings](#) category:

Click to view products by [TXGA](#) manufacturer:

Other Similar products are found below :

[95000-104TRLF](#) [10135584-644402LF](#) [DF62W-EP2022PCA](#) [95000-106TRLF](#) [DF62W-2022SCA](#) [DF62W-EP2022PC](#) [2203348](#) [DF62W-2022SC](#) [1084018](#) [1029039](#) [1084017](#) [802-10-012-10-002000](#) [1112640](#) [1112639](#) [891-007-9SS-BST1T](#) [000-34000](#) [0008550134](#) [0009482033](#) [0009507031](#) [57102-F02-18ULF](#) [57102-S06-03LF](#) [57202-S52-04LF](#) [PCN6-15S-2.5E](#) [0039019024](#) [58102-G61-06LF](#) [582553-1](#) [0009485154](#) [0009508121](#) [0022285053](#) [0050291907](#) [018731A](#) [LY20-4P-DT1-P1E-BR](#) [02.125.8002.8](#) [60101931](#) [60598-1 \(Cut Strip\)](#) [M1625-3R/100](#) [61062-3](#) [61082-181009](#) [CSU011177004](#) [636-1427](#) [638009-1](#) [641938-9](#) [641991-4](#) [644168-1](#) [644827-2](#) [647662-1](#) [65039-019ELF](#) [65692-001LF](#) [65781-018](#) [65781-047](#)