

REV	LOCATIONS	DESCRIPTION	DATE	REVISER	APPD

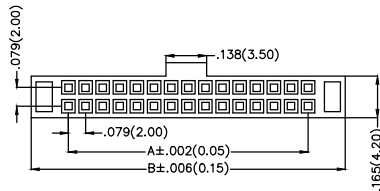
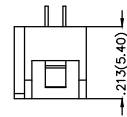
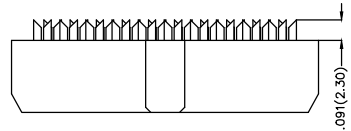
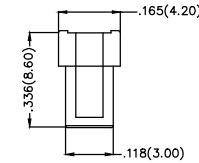
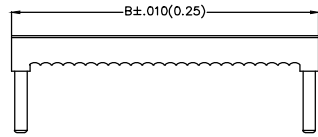
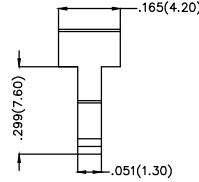
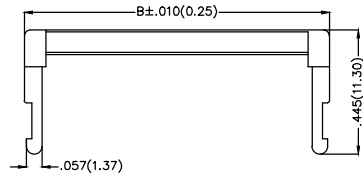
SPECIFICATIONS

Electrical

Current Rating: 2.0A AC(rms)/DC
Voltage Rating: 250V AC(rms)/DC
Contact Resistance: 20 mΩ Max
Insulation Resistance: 1000 MΩ MIN
Withstanding Voltage: 500V AC r.m.s
Temperature Range—Operating: -40°C~+105°C

Material and Plating

Housing: PBT (UL 94V-0)
Contact: Brass
Plating: Gold in contact area, nickel on tail



Ordering Information

FID 200 02 — XX 3 K6 K
1 2 3 4 5 6 7

Category	Series Number	Distinction No.	Circuits	Plating	Color-Resin	Packaging
1 FID-IDC	2 200-Pitch2.00mm	3 02	4 XX	5 3-Gold in contact area, nickel on tail	6 K6-Black	7 K-Tray

Circuits (n)	Part No.	Dimensions(in/mm)		Circuits (n)	Part No.	Dimensions(in/mm)	
		A	B			A	B
6	FID20002-063K6K	.157(4.00)	.441(11.20)	24	FID20002-243K6K	.866(22.00)	1.150(29.20)
8	FID20002-083K6K	.236(6.00)	.517(13.20)	26	FID20002-263K6K	.945(24.00)	1.228(31.20)
10	FID20002-103K6K	.315(8.00)	.598(15.20)	28	FID20002-283K6K	1.024(26.00)	1.306(33.20)
12	FID20002-123K6K	.394(10.00)	.677(17.20)	30	FID20002-303K6K	1.102(28.00)	1.386(35.20)
14	FID20002-143K6K	.472(12.00)	.756(19.20)	34	FID20002-343K6K	1.260(32.00)	1.543(39.20)
16	FID20002-163K6K	.551(14.00)	.835(21.20)	36	FID20002-363K6K	1.339(34.00)	1.622(41.20)
18	FID20002-183K6K	.630(16.00)	.913(23.20)	40	FID20002-403K6K	1.496(38.00)	1.780(45.20)
20	FID20002-203K6K	.709(18.00)	.992(25.20)	44	FID20002-443K6K	1.654(42.00)	1.937(49.20)
22	FID20002-223K6K	.787(20.00)	1.071(27.20)	50	FID20002-503K6K	1.890(48.00)	2.173(55.20)
60	FID20002-603K6K	1.890(58.00)	2.173(65.20)				

<p>THIRD ANGLE PROJECTION</p>	GENERAL TOLERANCES (UNLESS SPECIFIED)		APPROVE BY	DATE	PART NO.		ITEM NO.	<p>Leader Of Industry</p>	
	DESIGN UNITS Inch (metric)	X.±.012(0.30)	X.±5'	FRANK	9/SEPT/13	FID20002-XX3K6K			FID20002
		X.XX±.008(0.20)	.X'±2'	CHECKED BY	DATE	TITLE			REV 0
		X.XX±.006(0.15)	.XX'±1'	CHERRY	9/SEPT/13	Wire to Board(IDC Connector) Pitch 2.00mm			SHEET NO. 1/1
SCALE 5:1	SIZE A4	X.XXX±.004(0.10)	.XXX'±0.5'	DRAWN BY	DATE	THIS DRAWING CONTAINS INFORMATION THAT IS PROPRIETARY TO TXGA INDUSTRIAL ELECTRONICS(S.Z)CO.,LTD AND SHOULD NOT BE USED WITHOUT WRITTEN PERMISSION			
			JACOB	9/SEPT/13					

X-ON Electronics

Largest Supplier of Electrical and Electronic Components

Click to view similar products for [I/O Connectors](#) category:

Click to view products by [TXGA](#) manufacturer:

Other Similar products are found below :

[571763P](#) [59811-0000](#) [61-168618-12P](#) [D20419-211](#) [D38999/20FJ24PA L/C](#) [76871-1403](#) [PCR-E36PM](#) [PCS-XE26LKA](#) [PCS-XES68MS+](#)
[G38A71314B](#) [DX40-50P\(55\)](#) [1571250010](#) [157-22500-3](#) [MS3471L14-19P L/C](#) [192991-0703](#) [FCN-260C008-A/L0](#) [FCN-260C024-AL0](#) [FCN-](#)
[261Z008](#) [2000314-1](#) [200331-1](#) [PCS-E28FS+](#) [PCS-XE26SLFD+](#) [PCS-XE26SLFDT+](#) [G730VID08BDC24](#) [HDR-E14MSG1+](#) [54182-0605](#)
[UE86K842720321](#) [38113800006](#) [DP3AR020WQ1R200](#) [DRA-26PC-F0R](#) [Z4.102.0680.0](#) [500-1040](#) [500-1052](#) [DX40-20P\(55\)](#) [5554841-1](#)
[SM3100F14S-12P](#) [U90B3054061110](#) [U65-E04-4020](#) [557-262M2-06C](#) [60-042222-02S](#) [10099439-003C-TRLF](#) [226-0348-000](#) [10137239-](#)
[0011LF](#) [70.060.1028.0](#) [109029-ZZ](#) [HDR-E26MG1+](#) [SO-0715-02-01-02](#) [GT1-DA04CST](#) [231-303](#) [MS3112E16-8SX](#)