

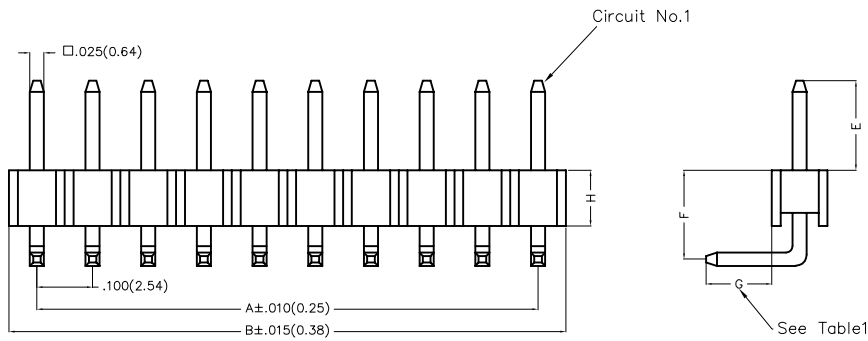
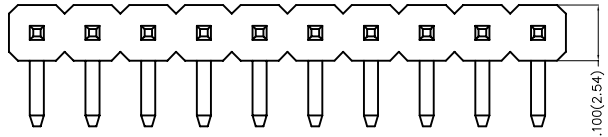
Dimensions(in/mm)	
H	F
.039(1.00)	.059(1.50)~.069(1.75)
.059(1.50)	.079(2.00)~.089(2.25)
.079(2.00)	.098(2.50)~.108(2.75)
.098(2.50)	≥.118(3.00)

REV	LOCATIONS	DESCRIPTION	DATE	REVISER	APPD

SPECIFICATIONS

Electrical
 Current Rating: 3.0A AC(rms)/DC
 Voltage Rating: 250V AC(rms)/DC
 Contact Resistance: 20 mΩ Max
 Insulation Resistance: 1000 MΩ Min
 Withstanding Voltage: 600V AC r.m.s
 Temperature Range-Operating: -40°C~+105°C

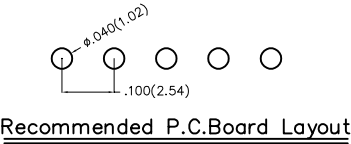
Material
 Housing: Glass Filled Polyester (UL 94V-0), Color: Black
 Pin: Brass
 Pin Plating: Gold plated/ Selective gold plated on contact area and 120μ" Min. matte tin plated on tails area



Ordering Information

FPH 254 60 - S XX B X XX X XX XX XX B
 1 2 3 4 5 6 7 8 9 10 11 12 13

1 Category FPH-Pin Header	2 Series Number 254-Pitch2.54mm	3 Distinction No. 60	4 Row Option S-Single Row	5 Circuits XX	6 Entry Angle B-90° Angle	7 Plating 1-Gold plated 7-Selective gold plated on contact area and matte tin plated on tails area
--------------------------------	--------------------------------------	---------------------------	--------------------------------	--------------------	--------------------------------	--



8 Thickness of Plating 01-1μ" 15-15μ" Custom plate available	9 Material-Resin 1-PBT 4-PA6T	10 E Size 01,02...-Serial number (See Table1)	11 F Size 01,02...-Serial number (See Table1)	12 G Size 01,02...-Serial number (See Table1)	13 Packaging B-PE Bag
---	---------------------------------------	---	---	---	----------------------------

<p>THIRD ANGLE PROJECTION</p>	GENERAL TOLERANCES (UNLESS SPECIFIED)		APPROVE BY FRANK	DATE 24/DEC/19	PART NO. FPH25460-SXXBXXXXXXXXXXB	ITEM NO. FPH25460	<p>Leader Of Industry</p>	
	X.±.012(0.30)	.X'±5'	CHECKED BY CHERRY	DATE 24/DEC/19	TITLE Board to Board(Pin Header) Pitch 2.54mm 90° Angle(DIP)			REV 0
	DESIGN UNITS Inch (metric)	X.XX±.008(0.20)	.X'±2'	DRAWN BY ZOEY	DATE 24/DEC/19	THIS DRAWING CONTAINS INFORMATION THAT IS PROPRIETARY TO TXGA INDUSTRIAL ELECTRONICS(S.Z)CO.,LTD AND SHOULD NOT BE USED WITHOUT WRITTEN PERMISSION		

REV	LOCATIONS	DESCRIPTION	DATE	REVISER	APPD

A

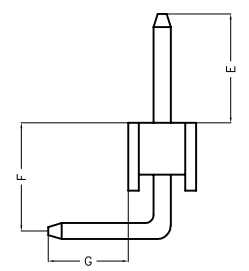
A

Table1

Serial number	Dimensions (in/mm) E	Serial number	Dimensions (in/mm) E
01	.059(1.50)	19	.236(6.00)
02	.069(1.75)	20	.246(6.25)
03	.079(2.00)	21	.256(6.50)
04	.089(2.25)	22	.266(6.75)
05	.098(2.50)	23	.276(7.00)
06	.108(2.75)	24	.285(7.25)
07	.118(3.00)	25	.295(7.50)
08	.128(3.25)	26	.305(7.75)
09	.138(3.50)	27	.315(8.00)
10	.148(3.75)	28	.325(8.25)
11	.157(4.00)	29	.335(8.50)
12	.167(4.25)	30	.344(8.75)
13	.177(4.50)	31	.354(9.00)
14	.187(4.75)	32	.364(9.25)
15	.197(5.00)	33	.374(9.50)
16	.207(5.25)	34	.384(9.75)
17	.217(5.50)	35	.394(10.00)
18	.226(5.75)		

Serial number	Dimensions (in/mm) F	Serial number	Dimensions (in/mm) F
01	.059(1.50)	19	.236(6.00)
02	.069(1.75)	20	.246(6.25)
03	.079(2.00)	21	.256(6.50)
04	.089(2.25)	22	.266(6.75)
05	.098(2.50)	23	.276(7.00)
06	.108(2.75)	24	.285(7.25)
07	.118(3.00)	25	.295(7.50)
08	.128(3.25)	26	.305(7.75)
09	.138(3.50)	27	.315(8.00)
10	.148(3.75)	28	.325(8.25)
11	.157(4.00)	29	.335(8.50)
12	.167(4.25)	30	.344(8.75)
13	.177(4.50)	31	.354(9.00)
14	.187(4.75)	32	.364(9.25)
15	.197(5.00)	33	.374(9.50)
16	.207(5.25)	34	.384(9.75)
17	.217(5.50)	35	.394(10.00)
18	.226(5.75)		

Serial number	Dimensions (in/mm) G	Serial number	Dimensions (in/mm) G
01	.059(1.50)	19	.236(6.00)
02	.069(1.75)	20	.246(6.25)
03	.079(2.00)	21	.256(6.50)
04	.089(2.25)	22	.266(6.75)
05	.098(2.50)	23	.276(7.00)
06	.108(2.75)	24	.285(7.25)
07	.118(3.00)	25	.295(7.50)
08	.128(3.25)	26	.305(7.75)
09	.138(3.50)	27	.315(8.00)
10	.148(3.75)	28	.325(8.25)
11	.157(4.00)	29	.335(8.50)
12	.167(4.25)	30	.344(8.75)
13	.177(4.50)	31	.354(9.00)
14	.187(4.75)	32	.364(9.25)
15	.197(5.00)	33	.374(9.50)
16	.207(5.25)	34	.384(9.75)
17	.217(5.50)	35	.394(10.00)
18	.226(5.75)		



A

B

C

D

E

F

A

B

C

D

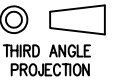

E

F

 THIRD ANGLE PROJECTION	GENERAL TOLERANCES (UNLESS SPECIFIED)		APPROVE BY FRANK	DATE 24/DEC/19	PART NO. FPH25460-SXXBXXXXXXXXXXB	ITEM NO. FPH25460	 Leader Of Industry
	DESIGN UNITS Inch (metric)	X.±.012(0.30)	X.±5'	CHECKED BY CHERRY	DATE 24/DEC/19	TITLE Board to Board(Pin Header) Pitch 2.54mm 90° Angle(DIP)	
SCALE 5:1	SIZE A4	X.XX±.006(0.15)	.XX±1'	DRAWN BY ZOEY	DATE 24/DEC/19	THIS DRAWING CONTAINS INFORMATION THAT IS PROPRIETARY TO TXGA INDUSTRIAL ELECTRONICS(S.Z)CO.,LTD AND SHOULD NOT BE USED WITHOUT WRITTEN PERMISSION	
		X.XXX±.004(0.10)	.XXX±0.5'			REV 0	SHEET NO. 2/3

REV	LOCATIONS	DESCRIPTION	DATE	REVISER	APPD

Circuits (n)	Part No.	Dimensions(in/mm)		Circuits (n)	Part No.	Dimensions(in/mm)	
		A	B			A	B
1	FPH25460-S01BXXXXXXXXXB	—	.100(2.54)	21	FPH25460-S21BXXXXXXXXXB	2.000(50.80)	2.100(53.34)
2	FPH25460-S02BXXXXXXXXXB	.100(2.54)	.200(5.08)	22	FPH25460-S22BXXXXXXXXXB	2.100(53.34)	2.200(55.88)
3	FPH25460-S03BXXXXXXXXXB	.200(5.08)	.300(7.62)	23	FPH25460-S23BXXXXXXXXXB	2.200(55.88)	2.300(58.42)
4	FPH25460-S04BXXXXXXXXXB	.300(7.62)	.400(10.16)	24	FPH25460-S24BXXXXXXXXXB	2.300(58.42)	2.400(60.96)
5	FPH25460-S05BXXXXXXXXXB	.400(10.16)	.500(12.70)	25	FPH25460-S25BXXXXXXXXXB	2.400(60.96)	2.500(63.50)
6	FPH25460-S06BXXXXXXXXXB	.500(12.70)	.600(15.24)	26	FPH25460-S26BXXXXXXXXXB	2.500(63.50)	2.600(66.04)
7	FPH25460-S07BXXXXXXXXXB	.600(15.24)	.700(17.78)	27	FPH25460-S27BXXXXXXXXXB	2.600(66.04)	2.700(68.58)
8	FPH25460-S08BXXXXXXXXXB	.700(17.78)	.800(20.32)	28	FPH25460-S28BXXXXXXXXXB	2.700(68.58)	2.800(71.12)
9	FPH25460-S09BXXXXXXXXXB	.800(20.32)	.900(22.86)	29	FPH25460-S29BXXXXXXXXXB	2.800(71.12)	2.900(73.66)
10	FPH25460-S10BXXXXXXXXXB	.900(22.86)	1.000(25.40)	30	FPH25460-S30BXXXXXXXXXB	2.900(73.66)	3.000(76.20)
11	FPH25460-S11BXXXXXXXXXB	1.000(25.40)	1.100(27.94)	31	FPH25460-S31BXXXXXXXXXB	3.000(76.20)	3.100(78.74)
12	FPH25460-S12BXXXXXXXXXB	1.100(27.94)	1.200(30.48)	32	FPH25460-S32BXXXXXXXXXB	3.100(78.74)	3.200(81.28)
13	FPH25460-S13BXXXXXXXXXB	1.200(30.48)	1.300(33.02)	33	FPH25460-S33BXXXXXXXXXB	3.200(81.28)	3.300(83.82)
14	FPH25460-S14BXXXXXXXXXB	1.300(33.02)	1.400(35.56)	34	FPH25460-S34BXXXXXXXXXB	3.300(83.82)	3.400(86.36)
15	FPH25460-S15BXXXXXXXXXB	1.400(35.56)	1.500(38.10)	35	FPH25460-S35BXXXXXXXXXB	3.400(86.36)	3.500(88.90)
16	FPH25460-S16BXXXXXXXXXB	1.500(38.10)	1.600(40.64)	36	FPH25460-S36BXXXXXXXXXB	3.500(88.90)	3.600(91.44)
17	FPH25460-S17BXXXXXXXXXB	1.600(40.64)	1.700(43.18)	37	FPH25460-S37BXXXXXXXXXB	3.600(91.44)	3.700(93.98)
18	FPH25460-S18BXXXXXXXXXB	1.700(43.18)	1.800(45.72)	38	FPH25460-S38BXXXXXXXXXB	3.700(93.98)	3.800(96.52)
19	FPH25460-S19BXXXXXXXXXB	1.800(45.72)	1.900(48.26)	39	FPH25460-S39BXXXXXXXXXB	3.800(96.52)	3.900(99.06)
20	FPH25460-S20BXXXXXXXXXB	1.900(48.26)	2.000(50.80)	40	FPH25460-S40BXXXXXXXXXB	3.900(99.06)	4.000(101.60)

 THIRD ANGLE PROJECTION	GENERAL TOLERANCES (UNLESS SPECIFIED)		APPROVE BY FRANK	DATE 24/DEC/19	PART NO. FPH25460-SXXBXXXXXXXXXB	ITEM NO. FPH25460	 Leader Of Industry		
	X.±.012(0.30)	X.±5'	CHECKED BY CHERRY	DATE 24/DEC/19	TITLE Board to Board(Pin Header) Pitch 2.54mm 90° Angle(DIP)			REV 0	SHEET NO. 3/3
	X.XX±.008(0.20)	.X±2'	DRAWN BY ZOEY	DATE 24/DEC/19	THIS DRAWING CONTAINS INFORMATION THAT IS PROPRIETARY TO TXGA INDUSTRIAL ELECTRONICS(S.Z)CO.,LTD AND SHOULD NOT BE USED WITHOUT WRITTEN PERMISSION				
	SCALE 5:1	SIZE A4	X.XX±.006(0.15)	.XX±1'	X.XX±.004(0.10)	.XX±0.5'			

X-ON Electronics

Largest Supplier of Electrical and Electronic Components

Click to view similar products for [Headers & Wire Housings](#) category:

Click to view products by [TXGA](#) manufacturer:

Other Similar products are found below :

[57102-F02-18ULF](#) [58102-G61-06LF](#) [0009485154](#) [009176003701906](#) [0050291907](#) [02.125.8002.8](#) [609-3404](#) [61062-3](#) [622-0430](#) [622-3653LF](#)
[63453-116](#) [636-1030](#) [636-1427](#) [636-3427](#) [636-4007](#) [641938-9](#) [644827-2](#) [65495-038](#) [65692-001LF](#) [65781-018](#) [65781-047](#) [65817-010LF](#)
[65817-015LF](#) [66207-023LF](#) [67016-026LF](#) [67095-007LF](#) [68631-112](#) [68645-018](#) [68648-049](#) [699319-000](#) [70.362.1628.0](#) [70-4210](#) [70-4226B](#)
[70-4853B](#) [707-5020](#) [707-5028](#) [71.350.2428.0](#) [71961-016LF](#) [733-134](#) [754199-000](#) [760-3052](#) [787-8014-00](#) [FCN-367T-T012/H](#) [80.063.4001.1](#)
[800-90-010-10-002000](#) [801-43-002-10-013000](#) [801-43-006-10-002000](#) [803-41-018-10-001000](#) [803-43-014-20-001000](#) [803-43-024-10-001000](#)