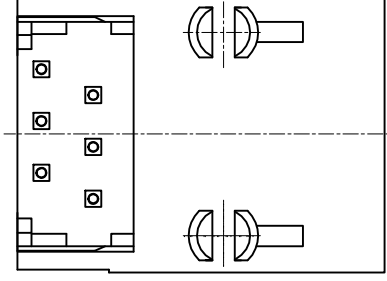
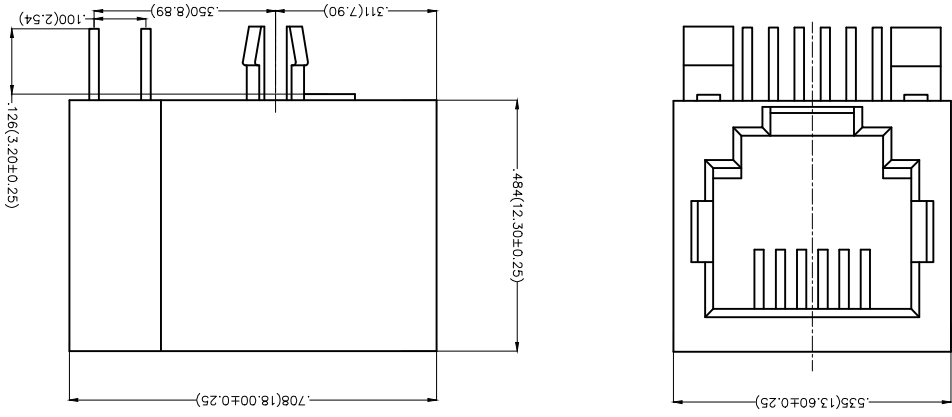


REV	LOCATIONS	DESCRIPTION	DATE	REVISER	APPD
1		Part No.: Change FRJ1111 into FRJ11001	05/JUN/18	KATE	ERIC

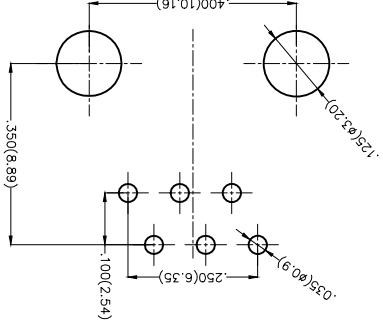
SPECIFICATIONS

Electrical

Current Rating: 1.5A AC(rms)/DC
Voltage Rating: 125V AC(rms)/DC
Contact Resistance: 20 m Ω Max
Insulation Resistance: 500 M Ω MIN
Withstanding Voltage: 1000V AC r.m.s
Operating Temperature: -40°C~+85°C
Material
Housing: PBT UL 94V-0
Contact: Gold Plating Over Nickel
PC Plug should bear 10N Pulling Force Without
750Times Min



Recommended P.C.Board Layout



Ordering Information

FRJ11 001 - 1 1 XX K6 K 2 0

1	2	3	4
Category	Distinction No.	Ports options	Plating
FRJ11-RJ11 Connector	001	1-1 Port	1-Gold Plated

5	6	7	8
Thickness of plating	Color-Resin	Packaging	Contact type
00-Gold flash 03-3 μ " Custom plate available	K6-Black	K-Tray	2-Round pin

THIRD ANGLE PROJECTION		DESIGN UNITS		SCALE	
	X \pm .012(0.30)	Inch (metric)	A4	5:1	
GENERAL TOLERANCES (UNLESS SPECIFIED)	X \pm .75	X.X \pm .008(0.20)	X.X \pm .006(0.15)	X.XX \pm .004(0.10)	X.XX \pm .0.5
APPROVE BY	CHECKED BY	DATE	DRAWN BY	DATE	
FRANK	CHEERY	1/AUG/13	JACOB	1/AUG/13	
DATE	FRJ11001-11XXK6K20	FRJ11001	TITLE		
			RJ11 Connector 6P6C		
			90° Angle		
			REV 1	SHEET NO. 1/1	



THIS DRAWING CONTAINS INFORMATION THAT IS PROPRIETARY TO TXGA INDUSTRIAL ELECTRONICS(Z)CO.,LTD AND SHOULD NOT BE USED WITHOUT WRITTEN PERMISSION

X-ON Electronics

Largest Supplier of Electrical and Electronic Components

Click to view similar products for [Modular Connectors](#) / [Ethernet Connectors](#) category:

Click to view products by [TXGA](#) manufacturer:

Other Similar products are found below :

[RJE231881317T](#) [MP1010RX-1000](#) [MP44RX-1000](#) [GAX-3-66](#) [GAX-8-62](#) [93606-0253](#) [GD-A-44](#) [GDCX-PA-66-50](#) [GDCX-PN-64](#) [GDCX-PN-66](#) [GDCX-PN-66-50](#) [GDLX-A-66](#) [GDLX-A-88](#) [GDLX-N-66](#) [GDLX-S-88K](#) [GDTX-S-88-50](#) [GDX-PA-1010](#) [GLX-N-1010M-BLK](#) [GLX-N-44M](#) [GLX-S-88M-BLK](#) [GMX-N-1010](#) [GMX-S-1010](#) [GMX-S-66](#) [GMX-SMT2-N-1010](#) [GMX-SMT2-N-64-50](#) [GMX-SMT2-S6-88](#) [GMX-SMT4-N-88](#) [GPX-2-64](#) [GRT1-BT1-5](#) [GSGX-N-2-88](#) [GSX-NS2-88-3.05](#) [GSX-NS2-88-3.05-50](#) [GSX-NS-88-3.05-30](#) [GSX-NS-88-3.05-50](#) [GSX-NS-88-3.68](#) [1-1775629-2](#) [GWLX-S-88-GR](#) [GWLX-S9-88-YG](#) [1300500326](#) [1300500227](#) [1300530003](#) [1300570002](#) [1324640-4](#) [RJ11FTVC2G](#) [RJ11FTVC2N](#) [RJFTVX2SA1G](#) [132764-001](#) [1400000](#) [1413176](#) [1413235](#)