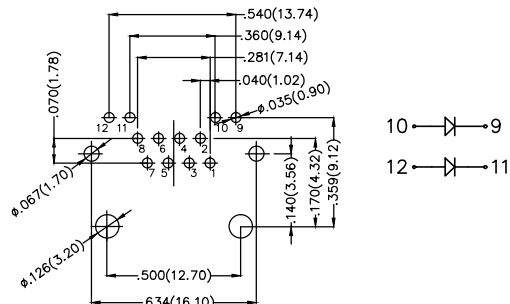
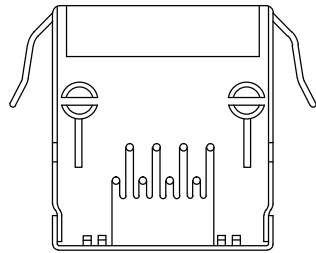
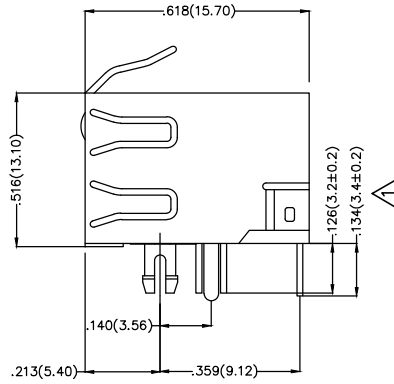
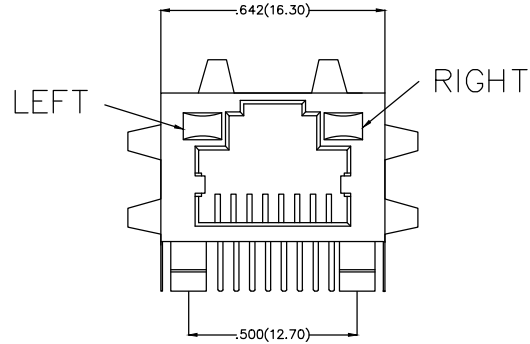
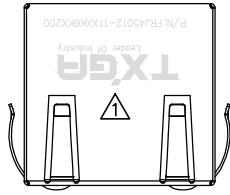


REV	LOCATIONS	DESCRIPTION	DATE	REVSER	APPD
1	△	1. Dimension: Change 3.00 into 3.2±0.2mm Change 3.00 into 3.4±0.2mm 2. Add the "TXGA" logo 3. Part No.: Change FRJ4512 into FRJ45012	01/JUN/18	Vandy	Eric



Recommended P.C.Board Layout

### SPECIFICATIONS

#### Electrical Performances

Current Rating: 1.5A AC(rms)/DC  
Voltage Rating: 125V AC(rms)/DC  
Contact Resistance: 30 mΩ Max  
Insulation Resistance: 500 MΩ MIN  
Withstanding Voltage: 1000V AC r.m.s

#### Material and Plating

Housing: PBT UL 94V-0  
Contact: Phosphor Bronze/Gold Plated  
Shell: Copper Alloy/Nickel Plated

#### Mechanical Performances

Mating/Unmating Force: 30N Max  
Retention Strength: 50N For 60s±5s  
Durability: 750 Cycles Min.

#### Environmental Characteristics

Temperature Range-Operating: -40°C~+85°C

### Ordering Information

FRJ45 012 - 1 1 XX K6 K X 2 0 0  
1 2 3 4 5 6 7 8 9

1 Category FRJ45-RJ45 Connector	2 Distinction No. 012	3 Ports options 1-1 Port	4 Plating 1-Gold Plated	5 Thickness of plating 00-Gold flash 03-3μ" Custom plate available
6 Color-Resin K6-Black	7 Packaging K-Tray	8 LED style 1-L: Yellow R: Green 2-L: Green R: Yellow	9 Contact type 2-Round pin	

 THIRD ANGLE PROJECTION	GENERAL TOLERANCES (UNLESS SPECIFIED)		APPROVE BY FRANK	DATE 31/MAY/17	PART NO. △ FRJ45012-11XXK6KX200	ITEM NO. FRJ45012	 Leader Of Industry
	DESIGN UNITS Inch (metric)	X.±.012(0.30)	X.±5'	CHECKED BY CHERRY	DATE 31/MAY/17	TITLE RJ45 Connectors 8P8C 90°Angle	
SCALE 5:1	SIZE A4	X.XX±.006(0.15)	.XX±1'	DRAWN BY LXF	DATE 31/MAY/17	THIS DRAWING CONTAINS INFORMATION THAT IS PROPRIETARY TO TXGA INDUSTRIAL ELECTRONICS(S.Z)CO.,LTD AND SHOULD NOT BE USED WITHOUT WRITTEN PERMISSION	
		X.XXX±.004(0.10)	.XXX±0.5'			REV 1	SHEET NO. 1/1

REV	LOCATIONS	DESCRIPTION	DATE	REVISER	APPD
1	△	1. Dimension: Change 3.00 into 3.2±0.2mm 2. Add the "TXGA" logo 3. Part No.: Change FRJ4512 into FRJ45012	01/JUN/18	Vandy	Eric

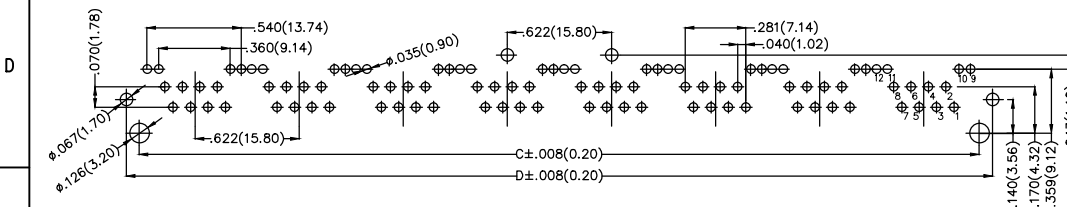
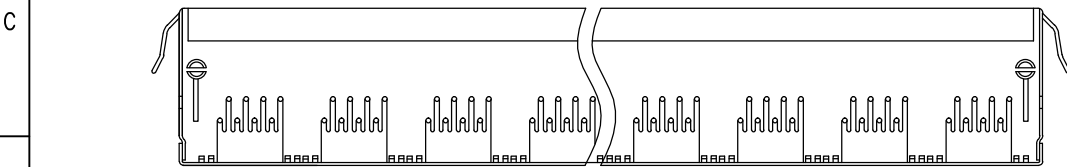
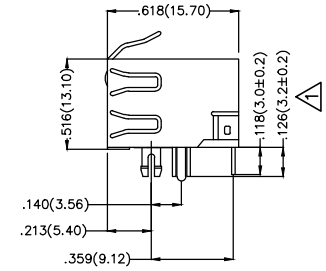
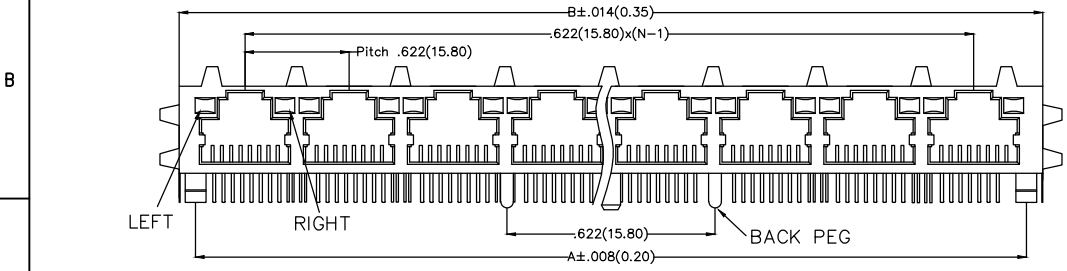
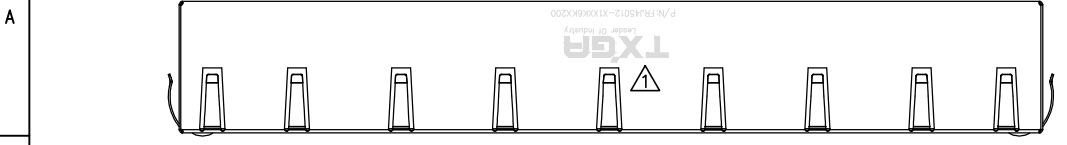
**SPECIFICATIONS**

**Electrical Performances**  
 Current Rating: 1.5A AC(rms)/DC  
 Voltage Rating: 125V AC(rms)/DC  
 Contact Resistance: 30 mΩ Max  
 Insulation Resistance: 500 MΩ MIN  
 Withstanding Voltage: 1000V AC r.m.s

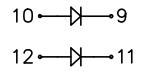
**Material and Plating**  
 Housing: PBT UL 94V-0  
 Contact: Phosphor Bronze/Gold Plated  
 Shell: Copper Alloy/Nickel Plated

**Mechanical Performances**  
 Mating/Unmating Force: 30N Max  
 Retention Strength: 50N For 60s±5s  
 Durability: 750 Cycles Min.

**Environmental Characteristics**  
 Temperature Range—Operating: -40°C~+85°C



Recommended P.C.Board Layout



**Ordering Information**

FRJ45 012 — X 1 XX K6 K X 2 0 0  
 1 2 3 4 5 6 7 8 9

1 Category FRJ45—RJ45 Connector	2 Distinction No. 012	3 Ports options 2—2 Ports 4—4 Ports 8—8 Ports	4 Plating 1—Gold Plated	5 Thickness of plating 00—Gold flash 03—3μ" Custom plate available
6 Color—Resin K6—Black	7 Packaging K—Tray	8 LED style 1—L: Yellow R: Green 2—L: Green R: Yellow	9 Contact type 2—Round pin	

Ports	Part No.	Dimensions(in/mm)			
		A	B	C	D
2	FRJ45012-21XXK6KX200	1.122(28.50)	1.272(32.30)	1.122(28.50)	1.268(32.20)
4	FRJ45012-41XXK6KX200	2.366(60.10)	2.488(63.20)	2.366(60.10)	2.512(63.80)
8	FRJ45012-81XXK6KX200	4.854(123.30)	5.000(127.00)	4.854(123.30)	5.000(127.00)

 THIRD ANGLE PROJECTION DESIGN UNITS Inch (metric) SCALE 5:1 SIZE A4	GENERAL TOLERANCES (UNLESS SPECIFIED)		APPROVE BY FRANK	DATE 31/MAY/17	PART NO. △ FRJ45012-X1XXK6KX200	ITEM NO. FRJ45012	 Leader Of Industry
	X.±.012(0.30)	X.±5'	CHECKED BY CHERRY	DATE 31/MAY/17	TITLE RJ45 Connectors 8P8C 90°Angle	REV 1	
	X.XX±.008(0.20)	.X±2'	DRAWN BY LXF	DATE 31/MAY/17	THIS DRAWING CONTAINS INFORMATION THAT IS PROPRIETARY TO TXGA INDUSTRIAL ELECTRONICS(S.Z)CO.,LTD AND SHOULD NOT BE USED WITHOUT WRITTEN PERMISSION		

## X-ON Electronics

Largest Supplier of Electrical and Electronic Components

*Click to view similar products for [Modular Connectors](#) / [Ethernet Connectors](#) category:*

*Click to view products by [TXGA](#) manufacturer:*

Other Similar products are found below :

[RJE231881317T](#) [MP1010RX-1000](#) [MP44RX-1000](#) [GAX-3-66](#) [GAX-8-62](#) [93606-0253](#) [GD-A-44](#) [GDCX-PA-66-50](#) [GDCX-PN-64](#) [GDCX-PN-66](#) [GDCX-PN-66-50](#) [GDLX-A-66](#) [GDLX-A-88](#) [GDLX-N-66](#) [GDLX-S-88K](#) [GDTX-S-88-50](#) [GDX-PA-1010](#) [GLX-N-1010M-BLK](#) [GLX-N-44M](#) [GLX-S-88M-BLK](#) [GMX-N-1010](#) [GMX-S-1010](#) [GMX-S-66](#) [GMX-SMT2-N-1010](#) [GMX-SMT2-N-64-50](#) [GMX-SMT2-S6-88](#) [GMX-SMT4-N-88](#) [GPX-2-64](#) [GRT1-BT1-5](#) [GSGX-N-2-88](#) [GSX-NS2-88-3.05](#) [GSX-NS2-88-3.05-50](#) [GSX-NS-88-3.05-30](#) [GSX-NS-88-3.05-50](#) [GSX-NS-88-3.68](#) [1-1775629-2](#) [GWLX-S-88-GR](#) [GWLX-S9-88-YG](#) [1300500326](#) [1300500227](#) [1300530003](#) [1300570002](#) [1324640-4](#) [RJ11FTVC2G](#) [RJ11FTVC2N](#) [RJFTVX2SA1G](#) [132764-001](#) [1400000](#) [1413176](#) [1413235](#)