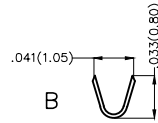
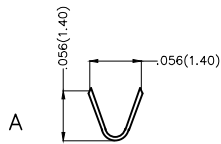
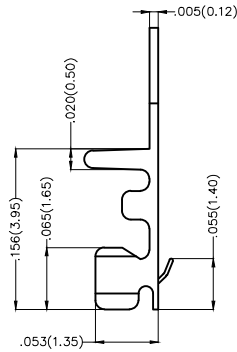
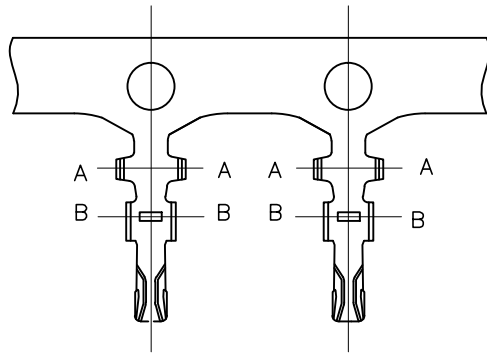


REV	LOCATIONS	DESCRIPTION	DATE	REVISER	APPD

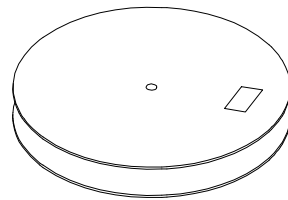
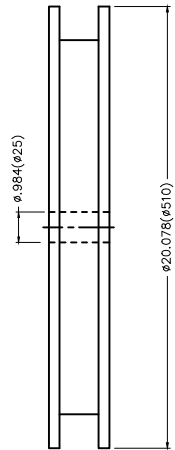
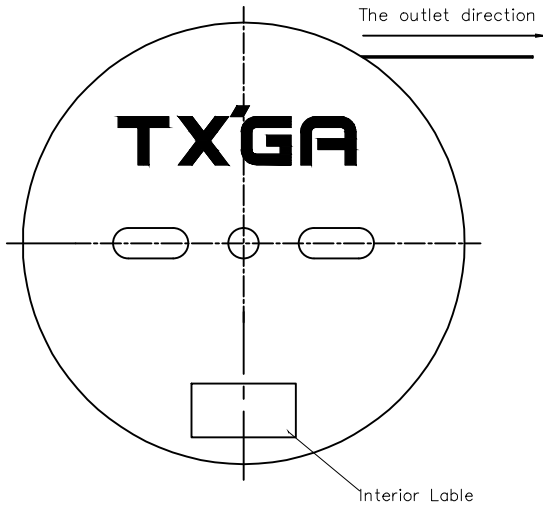
Electrical

Material: Phosphor Bronze C5191  
 All Corners and Radll Have a Maximum  
 Radius of 0.1mm unless Otherwise Specified  
 Plating: Tin-Plated  
 Wire Range: 32AWG~28AWG  
 Applicable Housing: FHG10001 Series  
 Minimum Order Quantity : 20,000 PCS

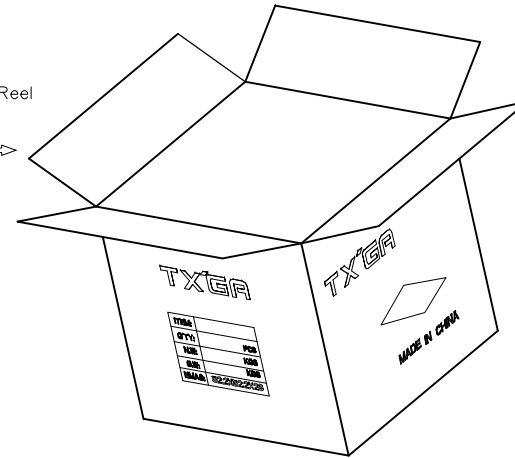


 THIRD ANGLE PROJECTION	GENERAL TOLERANCES (UNLESS SPECIFIED)		APPROVE BY FRANK	DATE 25/JUN/13	PART NO. FT10001-F2H	ITEM NO. FT10001	 Leader Of Industry	
	X.±.012(0.30)	X.±5°	CHECKED BY JACOB	DATE 25/JUN/13	TITLE Wire to Board Pitch 1.0mm(Terminal)			REV 0
	DESIGN UNITS Inch (metric)	X.X±.008(0.20)	.X°±2°	DRAWN BY CHERRY	DATE 25/JUN/13	THIS DRAWING CONTAINS INFORMATION THAT IS PROPRIETARY TO TXGA INDUSTRIAL ELECTRONICS(S.Z)CO.,LTD AND SHOULD NOT BE USED WITHOUT WRITTEN PERMISSION		
	SCALE 5:1	SIZE A4	X.XX±.006(0.15)	.XX°±1°	X.XXX±.004(0.10)	.XXX°±0.5°		

REV	LOCATIONS	DESCRIPTION	DATE	REVISER	APPD



20,000Pcs/Reel



 THIRD ANGLE PROJECTION	GENERAL TOLERANCES (UNLESS SPECIFIED)		APPROVE BY FRANK	DATE 25/JUN/13	PART NO. FT10001-F2H	ITEM NO. FT10001	 Leader Of Industry
	DESIGN UNITS Inch (metric)	X. $\pm$ 0.012(0.30)	X. $\pm$ 5'	CHECKED BY JACOB	DATE 25/JUN/13	TITLE Wire to Board Pitch 1.0mm(Terminal)	
SCALE 5:1	SIZE A4	X.XX $\pm$ .006(0.15)	.XX $\pm$ 1'	DRAWN BY CHERRY	DATE 25/JUN/13	THIS DRAWING CONTAINS INFORMATION THAT IS PROPRIETARY TO TXGA INDUSTRIAL ELECTRONICS(S.Z)CO.,LTD AND SHOULD NOT BE USED WITHOUT WRITTEN PERMISSION	
		X.XXX $\pm$ .004(0.10)	.XXX $\pm$ 0.5'			REV 0	SHEET NO. 2/2

## X-ON Electronics

Largest Supplier of Electrical and Electronic Components

*Click to view similar products for [Terminals](#) category:*

*Click to view products by [TXGA](#) manufacturer:*

Other Similar products are found below :

[HT-13-10](#) [71M-250-32-NB](#) [01-2065-1-0216](#) [00581P0075](#) [M10-10RX](#) [M10BCK](#) [60205-1](#) [604200-1](#) [60598-1-CUT-TAPE](#) [60617-1-C](#) [60873-1](#) [M14-516R/SK](#) [M14-6RSX](#) [M18-10FLX](#) [M18-8FBX](#) [M18-8R/LX](#) [M18BCK](#) [61314-6-C](#) [61-S](#) [61-SN-A](#) [62-NBM-A](#) [63-S](#) [640179-1](#) [640917-2-CUT-TAPE](#) [6501550002](#) [66107-2-C](#) [66107-4-C](#) [696683-1](#) [696834-1](#) [696861-1](#) [696931-1](#) [696999-1](#) [M8-516RK](#) [M86700006](#) [MA250DMFMX-A](#) [701-2007](#) [701-2307](#) [701-7761-03](#) [70F-110-32-PB](#) [718-N-A](#) [71M-187-20-NBL](#) [71M-250-32-NBL](#) [72F-187-20-NBL](#) [72M-250-32-NBL](#) [7310](#) [73F-250-32](#) [73F-250-32-NBL](#) [73F-250-32-NL](#) [F14-10C](#) [F-1M](#)