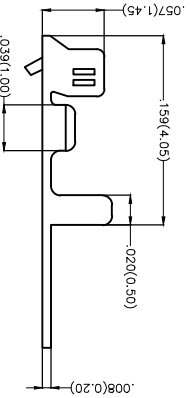
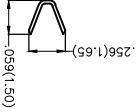
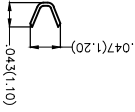


Section A-A



Section B-B



Notes:  
 1. Material: Phosphor Bronze C5191  
 2. Plating: Tin-Plated  
 3. Wire Range: 26AWG~32AWG  
 4. Insulation Nom. Dia:  $\varnothing 0.35'$  ( $\varnothing 0.9$ mm Max)  
 5. Applicable Housing: FHG15001Series  
 6. Minimum Order Quantity: 18,000 PCS

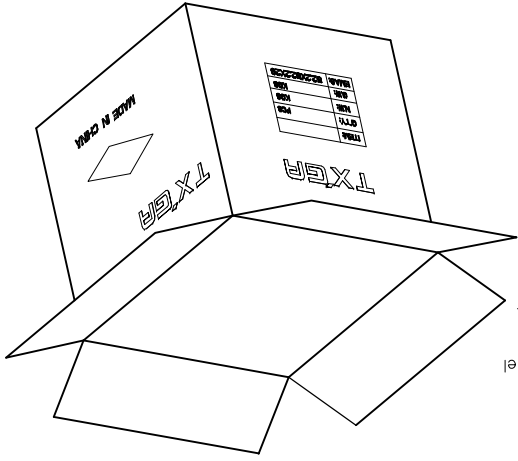
REV	LOCATIONS	DESCRIPTION	DATE	REVISER	APPD

 THIRD ANGLE PROJECTION (UNLESS SPECIFIED)	GENERAL TOLERANCES (UNLESS SPECIFIED) X.±.012(0.30)	APPROVE BY FRANK DATE 25/JUN/13	PART NO. FT15001-F2H ITEM NO. FT15001	TITLE Wire to Board Pitch 1.5mm(Terminal)	DESIGN UNITS Inch (metric)	SCALE 5:1 A4 SIZE
	X.±.008(0.20) X.±.006(0.15) X.XX±.004(0.10)	CHECKED BY JACOB DATE 25/JUN/13	DRAWN BY CHERRY DATE 25/JUN/13		THIS DRAWING CONTAINS INFORMATION THAT IS PROPRIETARY TO TXGA INDUSTRIAL ELECTRONICS(SZ)CO.,LTD AND SHOULD NOT BE USED WITHOUT WRITTEN PERMISSION	

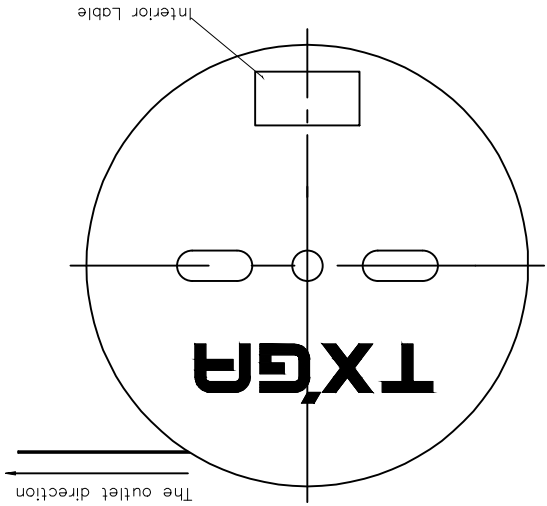
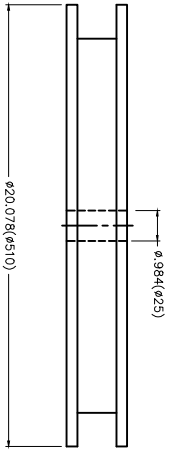
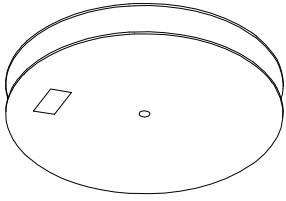


A B C D E F  
 1 2 3 4 5 6 7 8

SCALE		5:1		A4		X.XX±.004(0.10)		.XXX±0.5'	
DESIGN UNITS		Inch (metric)		X.XX±.006(0.15)		.XX±1'		DRAWN BY CHERRY	
THIRD ANGLE PROJECTION		X.XX±.008(0.20)		X±.2'		JACOB		DATE 25/JUN/13	
GENERAL TOLERANCES (UNLESS SPECIFIED)		X±.012(0.30)		X±.5'		CHECKED BY FRANK		DATE 25/JUN/13	
PART NO.		FT15001-F2H		ITEM NO.		FT15001		TITLE Wire to Board Pitch 1.5mm(Terminal)	
REV 0		SHEET NO. 2/2		THIS DRAWING CONTAINS INFORMATION THAT IS PROPRIETARY TO TXGA INDUSTRIAL ELECTRONICS(SZ)CO.,LTD AND SHOULD NOT BE USED WITHOUT WRITTEN PERMISSION					



18,000Pcs/Reel



REV	LOCATIONS	DESCRIPTION	DATE	REVISER	APPD

## X-ON Electronics

Largest Supplier of Electrical and Electronic Components

*Click to view similar products for [Terminals](#) category:*

*Click to view products by [TXGA](#) manufacturer:*

Other Similar products are found below :

[HT-13-10](#) [71M-250-32-NB](#) [01-2065-1-0216](#) [00581P0075](#) [M10-10RX](#) [M10BCK](#) [60205-1](#) [604200-1](#) [60598-1-CUT-TAPE](#) [60617-1-C](#) [60873-1](#) [M14-516R/SK](#) [M14-6RSX](#) [M18-10FLX](#) [M18-8FBX](#) [M18-8R/LX](#) [M18BCK](#) [61314-6-C](#) [61-S](#) [61-SN-A](#) [62-NBM-A](#) [63-S](#) [640179-1](#) [640917-2-CUT-TAPE](#) [6501550002](#) [66107-2-C](#) [66107-4-C](#) [696683-1](#) [696834-1](#) [696861-1](#) [696931-1](#) [696999-1](#) [M8-516RK](#) [M86700006](#) [MA250DMFMX-A](#) [701-2007](#) [701-2307](#) [701-7761-03](#) [70F-110-32-PB](#) [718-N-A](#) [71M-187-20-NBL](#) [71M-250-32-NBL](#) [72F-187-20-NBL](#) [72M-250-32-NBL](#) [7310](#) [73F-250-32](#) [73F-250-32-NBL](#) [73F-250-32-NL](#) [F14-10C](#) [F-1M](#)