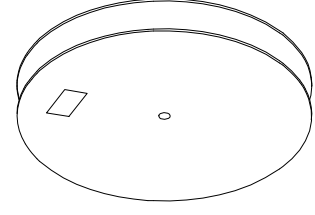
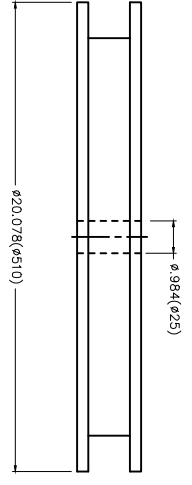
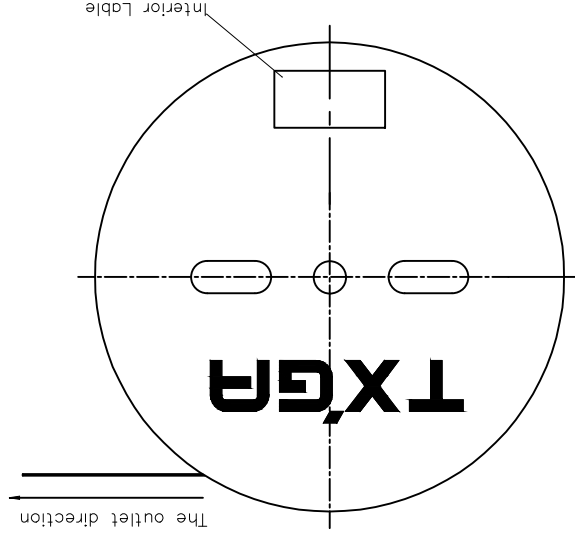
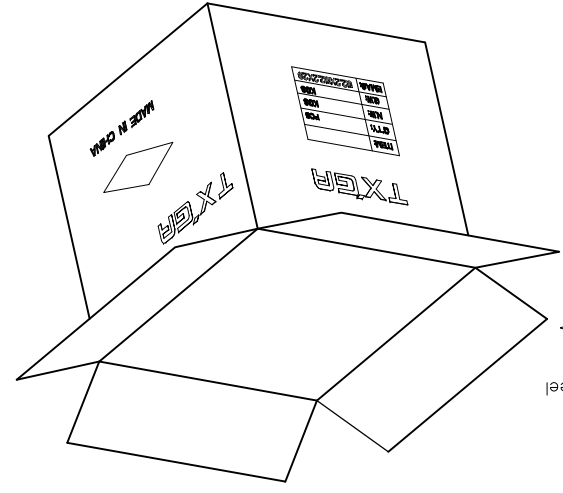


REV	LOCATIONS	DESCRIPTION	DATE	REVISER	APPD



13,000Pcs/Reel



 THIRD ANGLE PROJECTION	GENERAL TOLERANCES (UNLESS SPECIFIED) APPROVE BY FRANK DATE 25/JUN/13	CHECKED BY JACOB DATE 25/JUN/13	DRAWN BY CHERRY DATE 25/JUN/13	X.XX±.004(0.10) X.XX±.006(0.15) X.XX±.01	X.XX±.012(0.30) X.XX±.008(0.20) X.XX±.01	SCALE 5:1 SIZE A4	DESIGN UNITS Inch (metric)	TITLE Wire to Board Pitch 2.0mm(Terminal) PART NO. FT20002-F2H ITEM NO. FT20002	REV 1 SHEET NO. 2/2 LEADER OF INDUSTRY	THIS DRAWING CONTAINS INFORMATION THAT IS PROPRIETARY TO TXGA INDUSTRIAL ELECTRONICS(Z)CO.,LTD AND SHOULD NOT BE USED WITHOUT WRITTEN PERMISSION
	DATE 25/JUN/13	DATE 25/JUN/13	DATE 25/JUN/13	X.XX±0.5 X.XX±0.10	X.XX±.012(0.30) X.XX±.008(0.20) X.XX±.01	X.XX±.012(0.30) X.XX±.008(0.20) X.XX±.01	DESIGN UNITS Inch (metric)	TITLE Wire to Board Pitch 2.0mm(Terminal) PART NO. FT20002-F2H ITEM NO. FT20002	REV 1 SHEET NO. 2/2 LEADER OF INDUSTRY	THIS DRAWING CONTAINS INFORMATION THAT IS PROPRIETARY TO TXGA INDUSTRIAL ELECTRONICS(Z)CO.,LTD AND SHOULD NOT BE USED WITHOUT WRITTEN PERMISSION

8
7
6
5
4
3
2
1

E
D
C
E
F

F
E
D
C
B
A

X-ON Electronics

Largest Supplier of Electrical and Electronic Components

Click to view similar products for [Terminals](#) category:

Click to view products by [TXGA](#) manufacturer:

Other Similar products are found below :

[HT-13-10](#) [71M-250-32-NB](#) [01-2065-1-0216](#) [00581P0075](#) [M10-10RX](#) [M10BCK](#) [60205-1](#) [604200-1](#) [60598-1-CUT-TAPE](#) [60617-1-C](#) [60873-1](#) [M14-516R/SK](#) [M14-6RSX](#) [M18-10FLX](#) [M18-8FBX](#) [M18-8R/LX](#) [M18BCK](#) [61314-6-C](#) [61-S](#) [61-SN-A](#) [62-NBM-A](#) [63-S](#) [640179-1](#) [640917-2-CUT-TAPE](#) [6501550002](#) [66107-2-C](#) [66107-4-C](#) [696683-1](#) [696834-1](#) [696861-1](#) [696931-1](#) [696999-1](#) [M8-516RK](#) [M86700006](#) [MA250DMFMX-A](#) [701-2007](#) [701-2307](#) [701-7761-03](#) [70F-110-32-PB](#) [718-N-A](#) [71M-187-20-NBL](#) [71M-250-32-NBL](#) [72F-187-20-NBL](#) [72M-250-32-NBL](#) [7310](#) [73F-250-32](#) [73F-250-32-NBL](#) [73F-250-32-NL](#) [F14-10C](#) [F-1M](#)