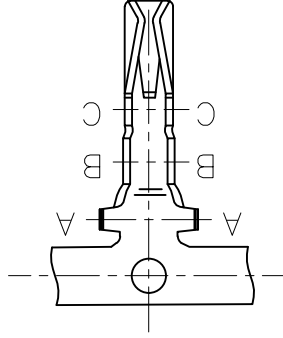
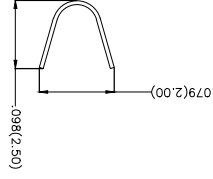


REV	LOCATIONS	DESCRIPTION	DATE	REWSE	APPD
1	▽	MPQ Change from 10000 to 13000Pcs/Reel	20160506	Cherry	done

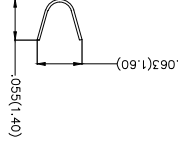
- Notes:
- Material: Phosphor Bronze C5191
 - Plating: Tin-Plated
 - Wire Range: 28AWG~22AWG
 - Insulation Nom. Dia: $\phi.035'$ ($\phi.9mm$) ~ $\phi.059'$ ($\phi.15mm$)
 - Applicable Housing: FH20007Series
 - Minimum Order Quantity: 13,000 PCS



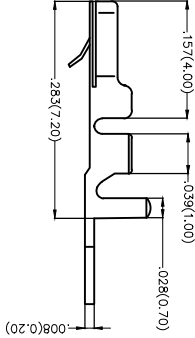
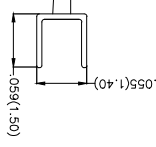
Section A-A



Section B-B



Section C-C



THIRD ANGLE		DESIGN UNITS		SCALE	
	PROJECTION	Inch (metric)	X.XX±.008(0.20)	A4	5:1
	(UNLESS SPECIFIED)	X.XX±.008(0.20)	X.XX±.006(0.15)	A4	X.XXX±.004(0.10)
		X.XX±.012(0.30)	X.XX±.01		X.XXX±.004(0.10)
DATE	APPROVE BY	CHECKED BY	DATE	DRAWN BY	DATE
25/JUN/13	FRANK	JACOB	25/JUN/13	CHERRY	25/JUN/13
PART NO.	ITEM NO.	TITLE		THIS DRAWING CONTAINS INFORMATION THAT IS PROPRIETARY TO TXGA INDUSTRIAL ELECTRONICS(SZ)CO.,LTD AND SHOULD NOT BE USED WITHOUT WRITTEN PERMISSION	
FT20006-F2H	FT20006	Wire to Board Pitch 2.0mm(Terminal)		SHEET NO. 1/2	

TXGA
Leader Of Industry

F

E

D

C

B

A

F

E

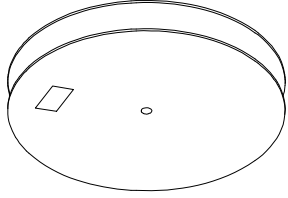
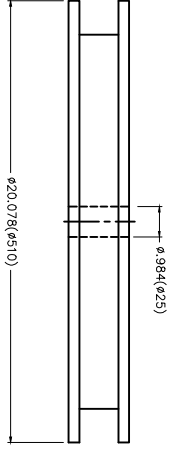
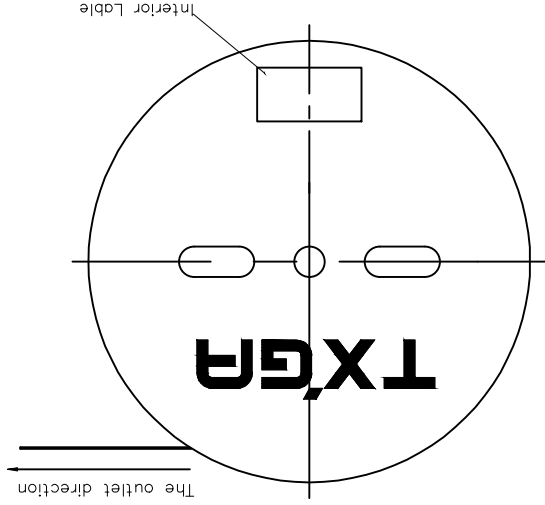
D

C

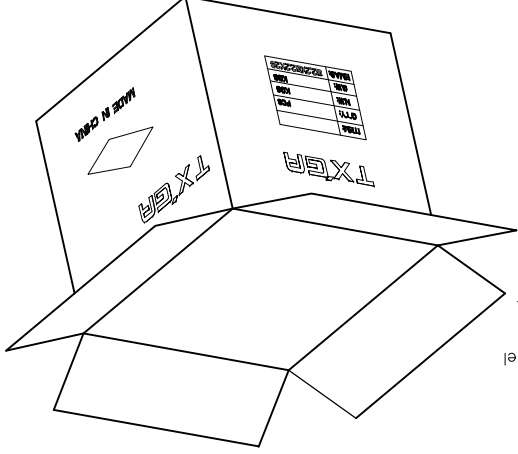
B

A

REV	LOCATIONS	DESCRIPTION	DATE	REVERSE	APPD
1		MPQ Change from 10000 to 13000Pcs/Reel	20160506	Cherry	done



13,000Pcs/Reel



THIRD ANGLE PROJECTION

DESIGN UNITS Inch (metric)

SCALE 5:1 A4

GENERAL TOLERANCES (UNLESS SPECIFIED)

X.±.012(0.30)

X.±.008(0.20)

X.±.006(0.15)

X.±.05

APPROVE BY FRANK

CHECKED BY JACOB

DRAWN BY CHERRY

DATE 25/JUN/13

DATE 25/JUN/13

DATE 25/JUN/13

DATE 25/JUN/13

DATE 25/JUN/13

PART NO. FT20006-F2H

ITEM NO. FT20006

TITLE Wire to Board

Pitch 2.0mm(Terminal)

Leader Of Industry

REV 1 SHEET NO. 2/2

THIS DRAWING CONTAINS INFORMATION THAT IS PROPRIETARY TO TXGA INDUSTRIAL ELECTRONICS(SZ)CO.,LTD AND SHOULD NOT BE USED WITHOUT WRITTEN PERMISSION

TXGA

X-ON Electronics

Largest Supplier of Electrical and Electronic Components

Click to view similar products for [Terminals](#) category:

Click to view products by [TXGA](#) manufacturer:

Other Similar products are found below :

[HT-13-10](#) [71M-250-32-NB](#) [01-2065-1-0216](#) [00581P0075](#) [M10-10RX](#) [M10BCK](#) [60205-1](#) [604200-1](#) [60598-1-CUT-TAPE](#) [60617-1-C](#) [60873-1](#) [M14-516R/SK](#) [M14-6RSX](#) [M18-10FLX](#) [M18-8FBX](#) [M18-8R/LX](#) [M18BCK](#) [61314-6-C](#) [61-S](#) [61-SN-A](#) [62149-1](#) [62-NBM-A](#) [63-S](#) [640179-1](#) [640917-2-CUT-TAPE](#) [6501550002](#) [66107-2-C](#) [66107-4-C](#) [696683-1](#) [696834-1](#) [696861-1](#) [696931-1](#) [696999-1](#) [M8-516RK](#) [M86700006](#) [MA250DMFMX-A](#) [701-2007](#) [701-2307](#) [701-7761-03](#) [70F-110-32-PB](#) [718-N-A](#) [71M-187-20-NBL](#) [71M-250-32-NBL](#) [72F-187-20-NBL](#) [72M-250-32-NBL](#) [7310](#) [73F-250-32](#) [73F-250-32-NBL](#) [73F-250-32-NL](#) [F-1M](#)