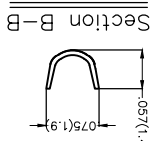
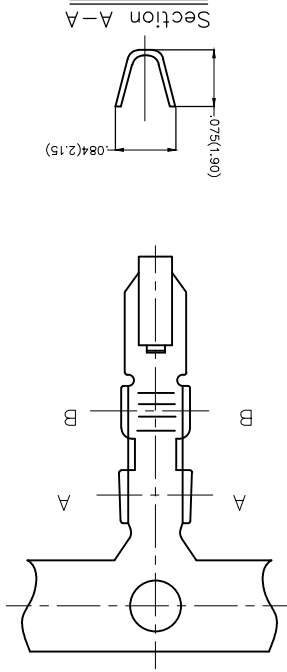
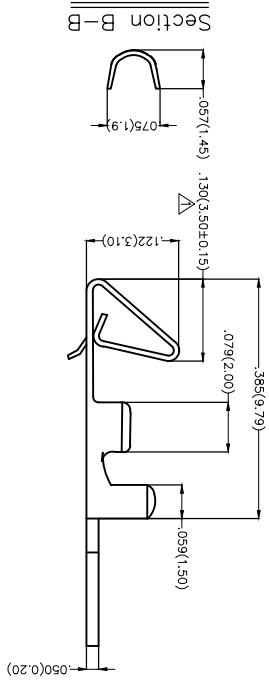


REV	LOCATIONS	DESCRIPTION	DATE	REVERSER	APPD
1	▽	SIZE CHANGE	20160606	CHERRY	JACK

Notes:

1. Material: Phosphor Bronze CS191
2. Plating: Tin-Plated
3. Wire Range: 28AWG~22AWG
4. Insulation Nom. Dia:  $\phi 0.59'$  ( $\phi 1.5mm$  Max)
5. Applicable Housing: FHG25401 Series
6. Minimum Order Quantity: 12,000 PCS



 THIRD ANGLE PROJECTION	GENERAL TOLERANCES (UNLESS SPECIFIED)	APPROVE BY	DATE	PART NO.	ITEM NO.
	X.±.012(0.30)	FRANK	5/JUN/16	FT25401-F2H	FT25401
DESIGN UNITS Inch (metric)	X.±.008(0.20)	CHECKED BY	DATE	TITLE	
A4	X.±.006(0.15)	JACOB	5/JUN/16	Wire to Board	
SCALE 5:1	X.±.004(0.10)	DRAWN BY	DATE	Pitch 2.54mm(Terminal)	REV 1
	X.±.05	CHERRY	5/JUN/16		SHEET NO. 1/2

THIS DRAWING CONTAINS INFORMATION THAT IS PROPRIETARY TO TXGA INDUSTRIAL ELECTRONICS(SZ)CO.,LTD AND SHOULD NOT BE USED WITHOUT WRITTEN PERMISSION



A B C D E F

A B C D E F

1 2 3 4 5 6 7 8

1 2 3 4 5 6 7 8

REV	LOCATIONS	DESCRIPTION	DATE	REVISER	APPD

A

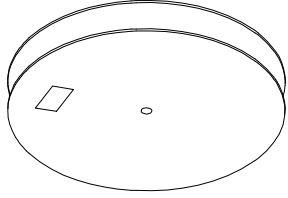
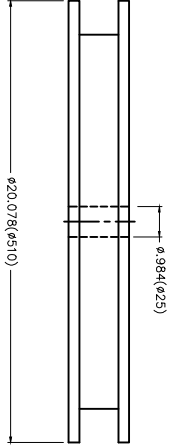
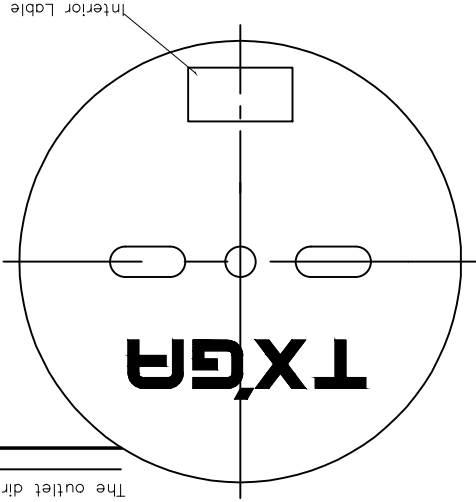
B

C

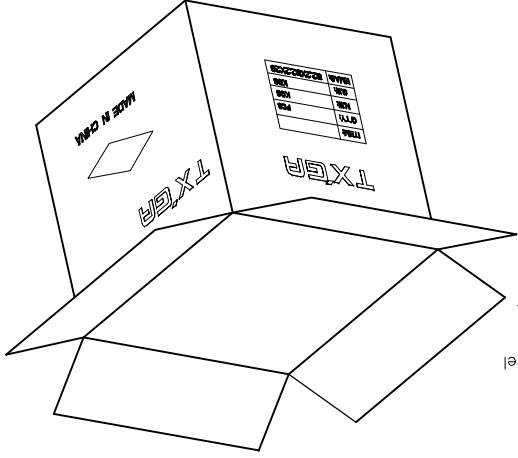
D

E

The outlet direction



12,000Pcs/Reel



GENERAL TOLERANCES (UNLESS SPECIFIED) 	APPROVE BY FRANK DATE 5/JUN/16	PART NO. FT25401-F2H ITEM NO. FT25401	TITLE Wire to Board Pitch 2.54mm(Terminal)	CHECKED BY JACOB DATE 5/JUN/16	DRAWN BY CHERRY DATE 5/JUN/16	THIS DRAWING CONTAINS INFORMATION THAT IS PROPRIETARY TO TXGA INDUSTRIAL ELECTRONICS(SZ)CO.,LTD AND SHOULD NOT BE USED WITHOUT WRITTEN PERMISSION
DESIGN UNITS Inch (metric)	X.±.012(0.30) X.±.5	X.±.008(0.20) X.±.2	X.±.006(0.15) X.±.1	SCALE 5:1 A4	SIZE X.XXX±.004(0.10) .XXX±.05	8 7 6 5 4 3 2 1

**TXGA**  
Leader Of Industry

A

B

C

D

E

F

## X-ON Electronics

Largest Supplier of Electrical and Electronic Components

*Click to view similar products for [Terminals](#) category:*

*Click to view products by [TXGA](#) manufacturer:*

Other Similar products are found below :

[HT-13-10](#) [71M-250-32-NB](#) [01-2065-1-0216](#) [00581P0075](#) [M10-10RX](#) [M10BCK](#) [60205-1](#) [604200-1](#) [60598-1-CUT-TAPE](#) [60617-1-C](#) [60873-1](#) [M14-516R/SK](#) [M14-6RSX](#) [M18-10FLX](#) [M18-8FBX](#) [M18-8R/LX](#) [M18BCK](#) [61314-6-C](#) [61-S](#) [61-SN-A](#) [62-NBM-A](#) [63-S](#) [640179-1](#) [640917-2-CUT-TAPE](#) [6501550002](#) [66107-2-C](#) [66107-4-C](#) [696683-1](#) [696834-1](#) [696861-1](#) [696931-1](#) [696999-1](#) [M8-516RK](#) [M86700006](#) [MA250DMFMX-A](#) [701-2007](#) [701-2307](#) [701-7761-03](#) [70F-110-32-PB](#) [718-N-A](#) [71M-187-20-NBL](#) [71M-250-32-NBL](#) [72F-187-20-NBL](#) [72M-250-32-NBL](#) [7310](#) [73F-250-32](#) [73F-250-32-NBL](#) [73F-250-32-NL](#) [F14-10C](#) [F-1M](#)