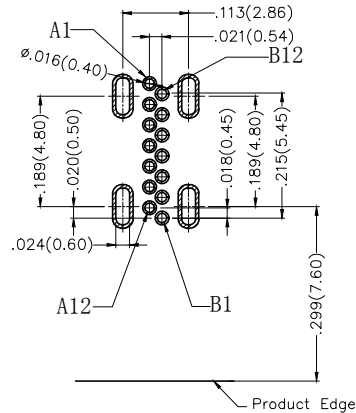
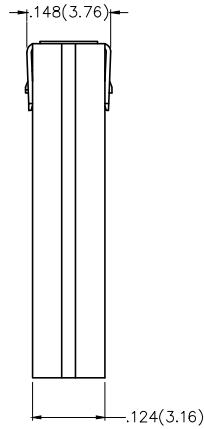


REV	LOCATIONS	DESCRIPTION	DATE	REVISER	APPD



Recommended P.C.Board Layout
General Tolerances: $\pm 0.05\text{mm}$

SPECIFICATIONS

Electrical

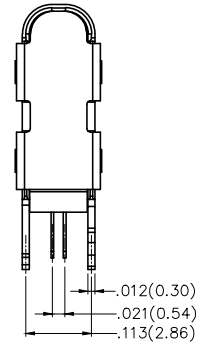
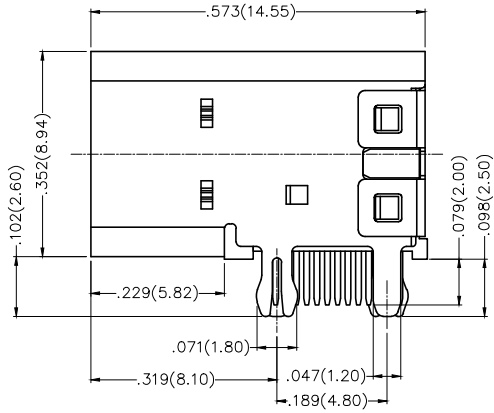
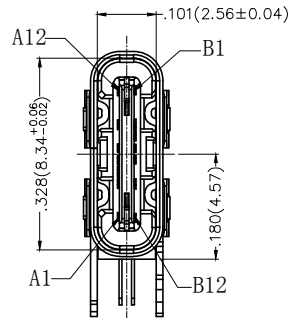
- Current Rating: 5.0A AC(rms)/DC
- Voltage Rating: 5V AC(rms)/DC
- Contact Resistance: 40 mΩ Max
- Withstanding Voltage: 100V AC r.m.s
- Insulation Resistance: 100 MΩ Min
- Temperature Range-Operating: $-30^{\circ}\text{C}\sim+85^{\circ}\text{C}$

Mechanical

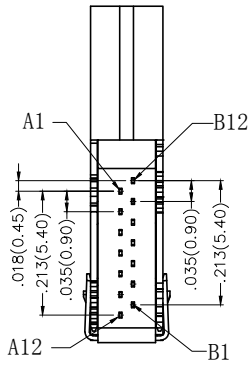
- Insertion Force: 5~20N
- Withdrawal Force: 8~20N
- Durability: 10,000 Cycles

Material and Plating

- Housing: LCP (UL 94V-0) Black
- Contact: Copper Alloy/ Gold Plated
- Shell: Stainless Steel/ Nickel Plated



Circuits	A	Circuits	B
1	GND	12	GND
4	VBUS	9	VBUS
5	CC1	7	DN2
6	DP1	6	DP2
7	DN1	5	CC2
9	VBUS	4	VBUS
12	GND	1	GND



<p>THIRD ANGLE PROJECTION</p>	GENERAL TOLERANCES (UNLESS SPECIFIED)		APPROVE BY	DATE	PART NO.	ITEM NO.	<p>Leader Of Industry</p>
	X.±.012(0.30)	X.±5°	FRANK	25/APR/17			
	X.X±.008(0.20)	X.±2°	CHECKED BY	DATE	TITLE		
	X.XX±.006(0.15)	.XX±1°	CHERRY	25/APR/17	USB C-type 90° Angle Female(DIP)(3.1)		
SCALE	SIZE	X.XXX±.004(0.10)	.XXX±0.5°	DRAWN BY	DATE	REV 0	SHEET NO. 1/1
5:1	A4			LXF	25/APR/17	THIS DRAWING CONTAINS INFORMATION THAT IS PROPRIETARY TO TXGA INDUSTRIAL ELECTRONICS(S.Z)CO.,LTD AND SHOULD NOT BE USED WITHOUT WRITTEN PERMISSION	

X-ON Electronics

Largest Supplier of Electrical and Electronic Components

Click to view similar products for [USB Connectors](#) category:

Click to view products by [TXGA](#) manufacturer:

Other Similar products are found below :

[10033527-N3112MLF](#) [17-210561](#) [GMCB05B11124H1EU](#) [17-200931](#) [65-647-8-BK-BU](#) [690-010-295-484](#) [73725-1191BLF](#) [950](#) [E8144-B01021-L](#) [A-USB A-LP-SMT-C](#) [A-USB B-TOP-C](#) [MUSBA511N5](#) [MUSBB15131](#) [MUSBC111M5](#) [MUSBD11135](#) [217450-1](#) [CA 6 W LD](#)
[896-30-004-00-000000](#) [KUSBVX-BS1N-W30](#) [KUSBX-AP-KIT-SCBLK](#) [KUSBX-AS2N-W](#) [KUSBX-SMT2AP1S-W](#) [KUSBX-SMTAS1NBTR](#) [KUSBX-SMTBS1NBTR](#) [30-498-6](#) [SK-60A-2](#) [17-200261](#) [17-210051](#) [1734082-1](#) [FK-37-32SL](#) [30-1574](#) [30-470](#) [30-489](#) [30-541](#) [30-572-3](#) [30-9503](#) [M9177/2-1](#) [MAB 5 S](#) [MIKROE-1451](#) [33UBBR-04SW11R](#) [USBFTV2PEM2G](#) [USBFTVC6ZN](#) [USBFTVSCCG](#)
[KUSBX-AS2N-W30](#) [KUSBX-SLAS1N-W](#) [KUSBX-SLAS1N-W30](#) [1-1734084-2](#) [E8110-001-01](#) [MUSBC11135](#) [NK-27-32SL](#)