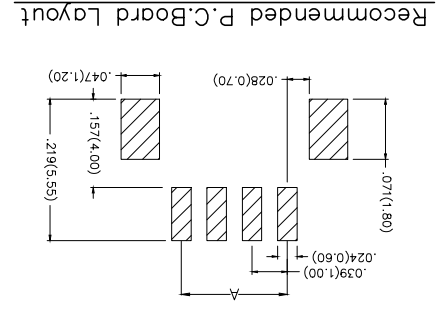
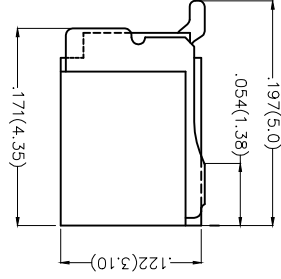
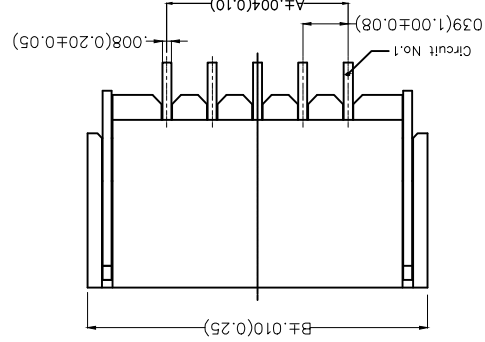
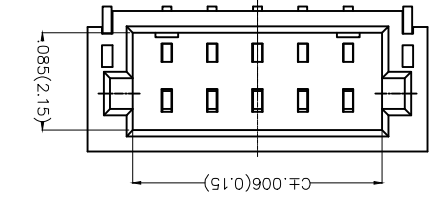


| REV | LOCATIONS | DESCRIPTION | DATE | REVISER | APPD |
|-----|-----------|-------------|------|---------|------|
| | | | | | |

Electrical
 Current Rating: 1A AC(rms)/DC
 Voltage Rating: 50V AC(rms)/DC
 Contact Resistance: 20 mΩ Max
 Insulation Resistance: 100 MΩ MIN
 Withstanding Voltage: 500V AC r.m.s
 Temperature Range—Operating: -25°C~+85°C
 Material and Plating
 Housing: PA9T (UL 94V-0)
 Contact Pin: Brass/ Tin plated
 Solder Tab: Copper alloy/ Tin plated



Recommended P.C.Board Layout

| | | | | | |
|---|-----------------|--------------|----|----------------|----------------|
| 1 | Category | FWF-Water | 2 | Series Number | 100-Pitch1.0mm |
| 3 | Distinction No. | 01 | 4 | Row Option | Single Row |
| 5 | Circuits | XX | 6 | Entry Angle | B-90° Angle |
| 7 | Plating | 2-Tin Plated | 8 | Material-Resin | 4-PA9T |
| 9 | Color-Resin | W5-White | 10 | Packaging | M-Reel |

Ordering Information


| | | | | | | | | | | | |
|----|-----|-----|----|----|----|----|---|---|---|----|---|
| 1 | FWF | 100 | 01 | - | S | XX | B | 2 | 4 | W5 | M |
| 2 | 100 | 01 | 01 | 01 | 01 | XX | B | 2 | 4 | W5 | M |
| 3 | 100 | 01 | 01 | 01 | 01 | XX | B | 2 | 4 | W5 | M |
| 4 | 100 | 01 | 01 | 01 | 01 | XX | B | 2 | 4 | W5 | M |
| 5 | 100 | 01 | 01 | 01 | 01 | XX | B | 2 | 4 | W5 | M |
| 6 | 100 | 01 | 01 | 01 | 01 | XX | B | 2 | 4 | W5 | M |
| 7 | 100 | 01 | 01 | 01 | 01 | XX | B | 2 | 4 | W5 | M |
| 8 | 100 | 01 | 01 | 01 | 01 | XX | B | 2 | 4 | W5 | M |
| 9 | 100 | 01 | 01 | 01 | 01 | XX | B | 2 | 4 | W5 | M |
| 10 | 100 | 01 | 01 | 01 | 01 | XX | B | 2 | 4 | W5 | M |

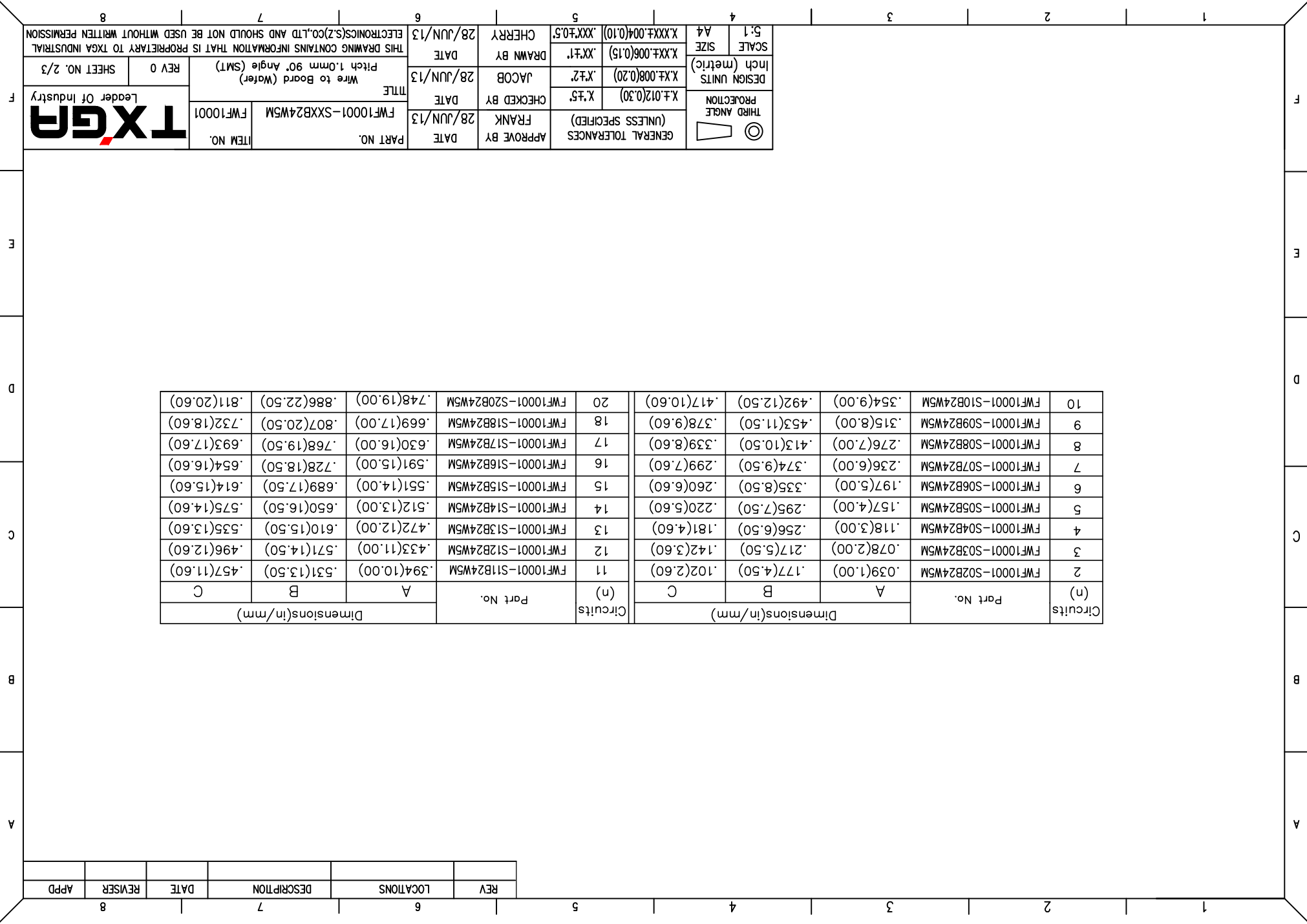
| | | | | | | | |
|--------------|---------------|-----------------|-----------------|---|-----------------------|-------------|---------------|
| APPROVE BY | FRANK | DATE | 28/JUN/13 | PART NO. | FWF10001-SXXB24W5M | ITEM NO. | FWF10001 |
| CHECKED BY | JACOB | DATE | 28/JUN/13 | TITLE | Wire to Board (Water) | REV 0 | SHEET NO. 1/3 |
| DRAWN BY | CHERRY | DATE | 28/JUN/13 | THIS DRAWING CONTAINS INFORMATION THAT IS PROPRIETARY TO TXGA INDUSTRIAL ELECTRONICS(SZ)CO.,LTD AND SHOULD NOT BE USED WITHOUT WRITTEN PERMISSION | | | |
| SCALE | 5:1 | SIZE | A4 | GENERAL TOLERANCES (UNLESS SPECIFIED) | | | |
| DESIGN UNITS | Inch (metric) | X.XX±.008(0.20) | X.XX±.006(0.15) | X.XX±.004(0.10) | X.XX±.05 | THIRD ANGLE | |



| | | | | | |
|-----|-----------|-------------|------|---------|------|
| REV | LOCATIONS | DESCRIPTION | DATE | REVISER | APPD |
| | | | | | |

| Circuits | Part No. | Dimensions(in/mm) | | | | | | | |
|----------|--------------------|-------------------|-------------|-------------|-----|--------------------|-------------|-------------|-------------|
| | | A | B | C | | | | | |
| 2 | FWF10001-S02B24W5M | .039(1.00) | .177(4.50) | .102(2.60) | | | | | |
| 3 | FWF10001-S03B24W5M | .078(2.00) | .217(5.50) | .142(3.60) | | | | | |
| 4 | FWF10001-S04B24W5M | .118(3.00) | .256(6.50) | .181(4.60) | | | | | |
| 5 | FWF10001-S05B24W5M | .157(4.00) | .295(7.50) | .220(5.60) | | | | | |
| 6 | FWF10001-S06B24W5M | .197(5.00) | .335(8.50) | .260(6.60) | | | | | |
| 7 | FWF10001-S07B24W5M | .236(6.00) | .374(9.50) | .299(7.60) | | | | | |
| 8 | FWF10001-S08B24W5M | .276(7.00) | .413(10.50) | .339(8.60) | | | | | |
| 9 | FWF10001-S09B24W5M | .315(8.00) | .453(11.50) | .378(9.60) | | | | | |
| 10 | FWF10001-S10B24W5M | .354(9.00) | .492(12.50) | .417(10.60) | | | | | |
| Circuits | Part No. | A | B | C | (n) | FWF10001-S11B24W5M | .394(10.00) | .531(13.50) | .457(11.60) |
| | | | | | | FWF10001-S12B24W5M | .433(11.00) | .571(14.50) | .496(12.60) |
| | | | | | | FWF10001-S13B24W5M | .472(12.00) | .610(15.50) | .535(13.60) |
| | | | | | | FWF10001-S14B24W5M | .512(13.00) | .650(16.50) | .575(14.60) |
| | | | | | | FWF10001-S15B24W5M | .551(14.00) | .689(17.50) | .614(15.60) |
| | | | | | | FWF10001-S16B24W5M | .591(15.00) | .728(18.50) | .654(16.60) |
| | | | | | | FWF10001-S17B24W5M | .630(16.00) | .768(19.50) | .693(17.60) |
| | | | | | | FWF10001-S18B24W5M | .669(17.00) | .807(20.50) | .732(18.60) |
| | | | | | | FWF10001-S20B24W5M | .748(19.00) | .886(22.50) | .811(20.60) |

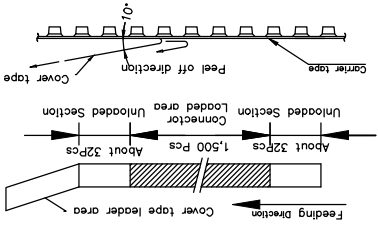
| | | | | | | |
|---|--|---------------------|-------------------|---|----------------------|---------------|
|  THIRD ANGLE PROJECTION | GENERAL TOLERANCES (UNLESS SPECIFIED) | APPROVE BY FRANK | DATE 28/JUN/13 | PART NO. FWF10001-SXXB24W5M | ITEM NO. FWF10001 | |
| | X.±.012(0.30) | CHECKED BY JACOB | DATE 28/JUN/13 | TITLE Wire to Board (Water Pitch 1.0mm 90° Angle (SMT)) | REV 0 | SHEET NO. 2/3 |
| DESIGN UNITS Inch (metric) | X.X±.008(0.20) X.X±.1 | DRAWN BY CHERRY | DATE 28/JUN/13 | THIS DRAWING CONTAINS INFORMATION THAT IS PROPRIETARY TO TXGA INDUSTRIAL ELECTRONICS(SZ)CO.,LTD AND SHOULD NOT BE USED WITHOUT WRITTEN PERMISSION | | |
| SCALE 5:1 A4 | X.XX±.004(0.10) .XXX±0.5 | | | | | |



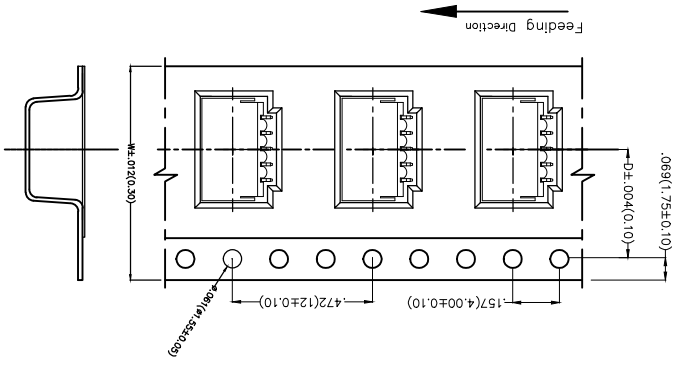
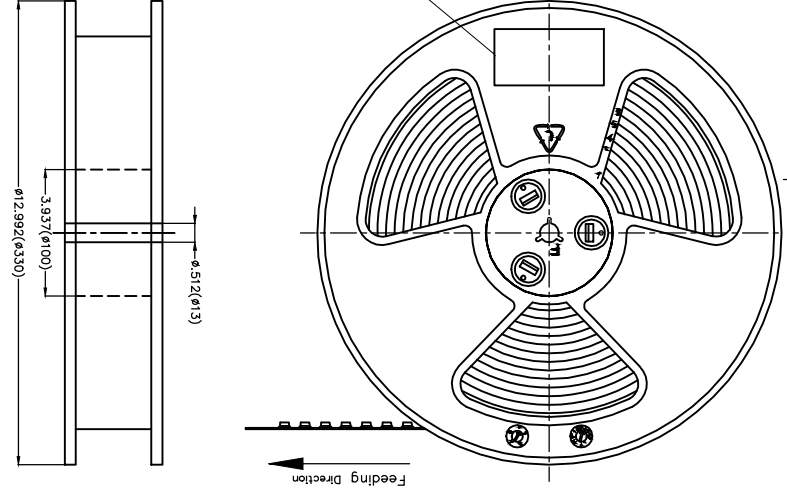
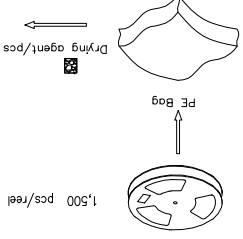
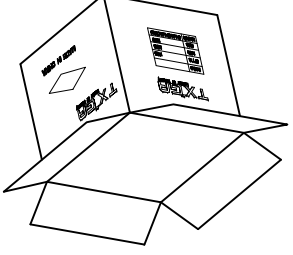
| REV | LOCATIONS | DESCRIPTION | DATE | REVISER | APPD |
|-----|-----------|-------------|------|---------|------|
| | | | | | |

Note:

- 10 sprocket hole cumulative tolerance±0.2
- Carrier camber is within 1.0mm in 250mm
- Material: White Conductive polystyrene Alloy 100% recyclable
- All dimensions meet EIA-481-3 requirements
- Peel off force of cover tape&carrier tape:20g~130g(0.2N~1.3N)
- Component load per 13" reel: 1,500 pcs



| Circuits | Dimensions(in/mm) | |
|----------|-------------------|-------------|
| | D | W |
| (n) | D | W |
| 2 | .295(7.50) | .630(16.00) |
| 3 | .295(7.50) | .630(16.00) |
| 4 | .295(7.50) | .630(16.00) |
| 5 | .295(7.50) | .630(16.00) |
| 6 | .295(7.50) | .630(16.00) |
| 7 | .295(7.50) | .630(16.00) |
| 8 | .295(7.50) | .630(16.00) |
| 9 | .295(7.50) | .630(16.00) |
| 10 | .453(11.50) | .945(24.00) |
| 11 | .453(11.50) | .945(24.00) |



| GENERAL TOLERANCES (UNLESS SPECIFIED) | DATE | APPROVE BY | DATE | PART NO. | ITEM NO. |
|---------------------------------------|-----------|------------|-----------|---|---------------------|
| THIRD ANGLE PROJECTION | 28/JUN/13 | FRANK | 28/JUN/13 | FWF10001-SXXB24WSM | FWF10001 |
| DESIGN UNITS Inch (metric) | DATE | CHECKED BY | DATE | TITLE | Leader Of Industry |
| SCALE SIZE | DATE | DRAWN BY | DATE | Wire to Board (Water) | REV 0 SHEET NO. 3/3 |
| 5:1 A4 | 28/JUN/13 | CHEERY | 28/JUN/13 | THIS DRAWING CONTAINS INFORMATION THAT IS PROPRIETARY TO TXGA INDUSTRIAL ELECTRONICS(SZ)CO.,LTD AND SHOULD NOT BE USED WITHOUT WRITTEN PERMISSION | |



X-ON Electronics

Largest Supplier of Electrical and Electronic Components

Click to view similar products for [Headers & Wire Housings](#) category:

Click to view products by [TXGA](#) manufacturer:

Other Similar products are found below :

[95000-104TRLF](#) [10135584-644402LF](#) [DF62W-EP2022PCA](#) [95000-106TRLF](#) [DF62W-2022SCA](#) [DF62W-EP2022PC](#) [2203348](#) [DF62W-2022SC](#) [1084018](#) [1029039](#) [1084017](#) [802-10-012-10-002000](#) [1112640](#) [1112639](#) [891-007-9SS-BST1T](#) [000-34000](#) [0008550134](#) [0009482033](#) [0009507031](#) [57102-F02-18ULF](#) [57102-S06-03LF](#) [57202-S52-04LF](#) [PCN6-15S-2.5E](#) [0039019024](#) [58102-G61-06LF](#) [582553-1](#) [0009485154](#) [0009508121](#) [0022285053](#) [0050291907](#) [018731A](#) [LY20-4P-DT1-P1E-BR](#) [02.125.8002.8](#) [60101931](#) [60598-1 \(Cut Strip\)](#) [M1625-3R/100](#) [61062-3](#) [61082-181009](#) [CSU011177004](#) [636-1427](#) [638009-1](#) [641938-9](#) [641991-4](#) [644168-1](#) [644827-2](#) [647662-1](#) [65039-019ELF](#) [65692-001LF](#) [65781-018](#) [65781-047](#)