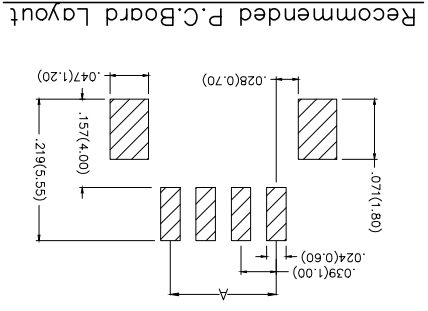
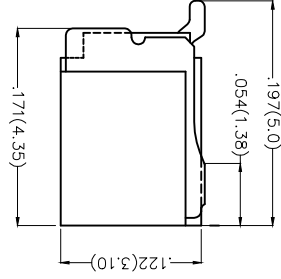
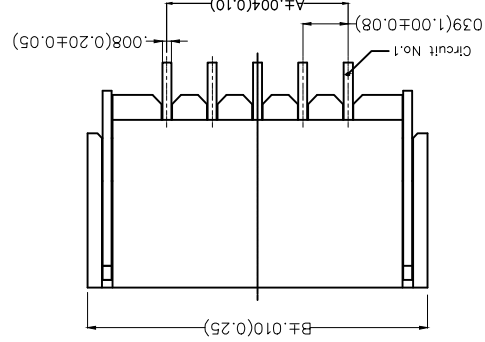
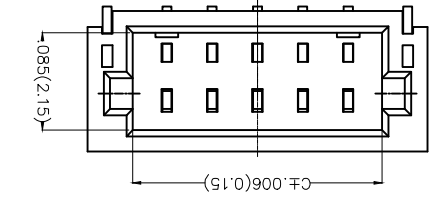


REV	LOCATIONS	DESCRIPTION	DATE	REVISER	APPD

Electrical
 Current Rating: 1A AC(rms)/DC
 Voltage Rating: 50V AC(rms)/DC
 Contact Resistance: 20 mΩ Max
 Insulation Resistance: 100 MΩ MIN
 Withstanding Voltage: 500V AC r.m.s
 Temperature Range—Operating: -25°C~+85°C
 Material and Plating
 Housing: PA9T (UL 94V-0)
 Contact Pin: Brass/ Tin plated
 Solder Tab: Copper alloy/ Tin plated



Recommended P.C.Board Layout

1	Category	FWF-Water	2	Series Number	100-Pitch:1.0mm
3	Distinction No.	01	8	Material-Resin	4-PA9T
4	Row Option	Single Row	9	Color-Resin	W5-White
5	Circuits	XX	10	Packaging	M-Reel
6	Entry Angle	B-90° Angle			

Ordering Information


1	FWF	100	01	-	S	XX	B	2	4	W5	M
2	100	01	3	2	4	XX	B	5	2	4	W5
3	100	01	3	2	4	XX	B	5	2	4	W5
4	100	01	3	2	4	XX	B	5	2	4	W5
5	100	01	3	2	4	XX	B	5	2	4	W5
6	100	01	3	2	4	XX	B	5	2	4	W5
7	100	01	3	2	4	XX	B	5	2	4	W5
8	100	01	3	2	4	XX	B	5	2	4	W5
9	100	01	3	2	4	XX	B	5	2	4	W5
10	100	01	3	2	4	XX	B	5	2	4	W5

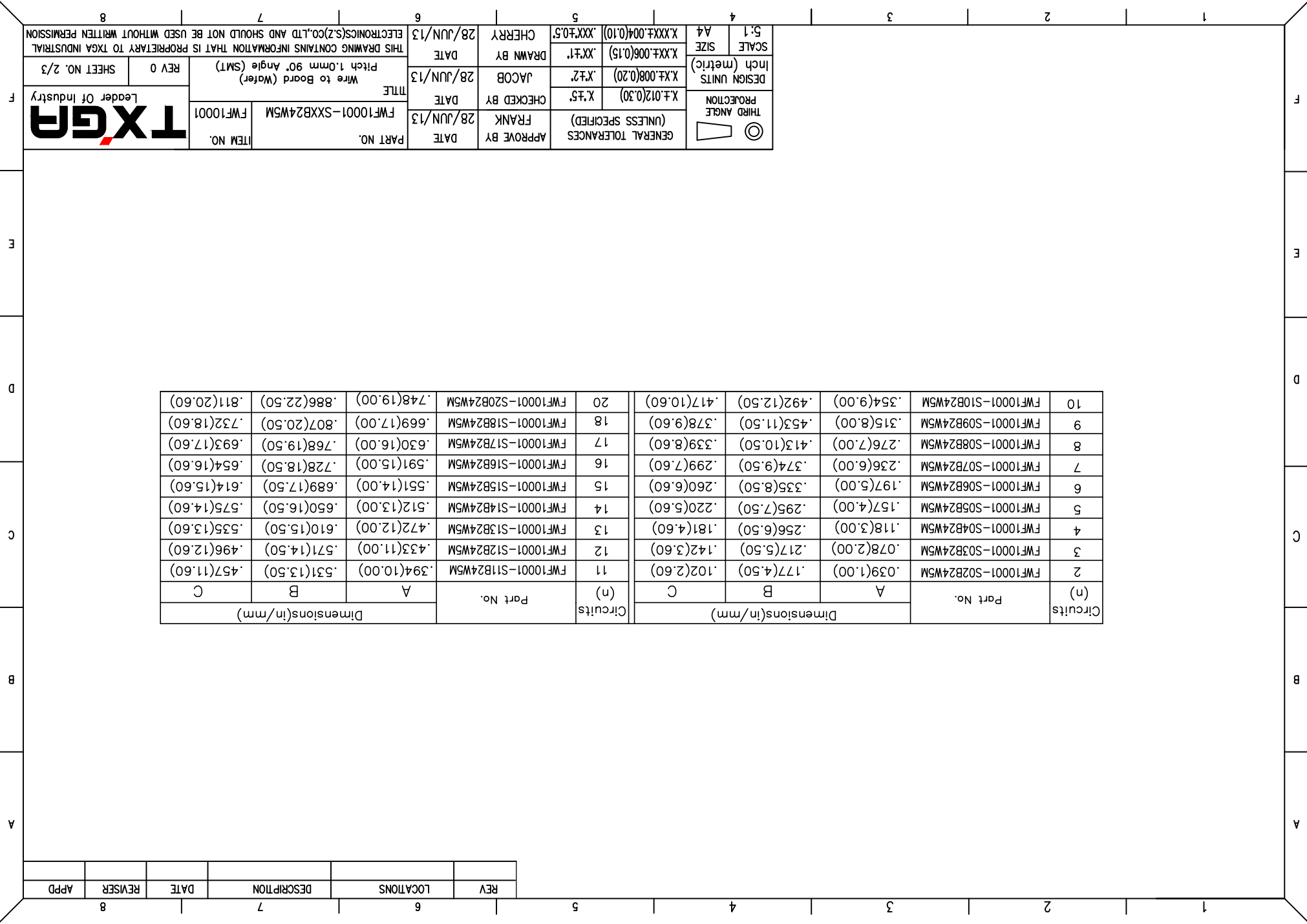
APPROVE BY	FRANK	DATE	28/JUN/13	PART NO.	FWF10001-SXXB24W5M	ITEM NO.	FWF10001
CHECKED BY	JACOB	DATE	28/JUN/13	TITLE	Wire to Board (Water)	REV 0	SHEET NO. 1/3
DRAWN BY	CHERRY	DATE	28/JUN/13	THIS DRAWING CONTAINS INFORMATION THAT IS PROPRIETARY TO TXGA INDUSTRIAL ELECTRONICS(SZ)CO.,LTD AND SHOULD NOT BE USED WITHOUT WRITTEN PERMISSION			
SCALE	5:1	SIZE	A4	GENERAL TOLERANCES (UNLESS SPECIFIED)			
DESIGN UNITS	Inch (metric)	X.XX±.008(0.20)	X.XX±.006(0.15)	X.XX±.004(0.10)	X.XX±.05		
THIRD ANGLE	PROJECTION	X.±.012(0.30)	X.±.01	X.XX±.004(0.10)	X.XX±.05		



REV	LOCATIONS	DESCRIPTION	DATE	REVISER	APPD

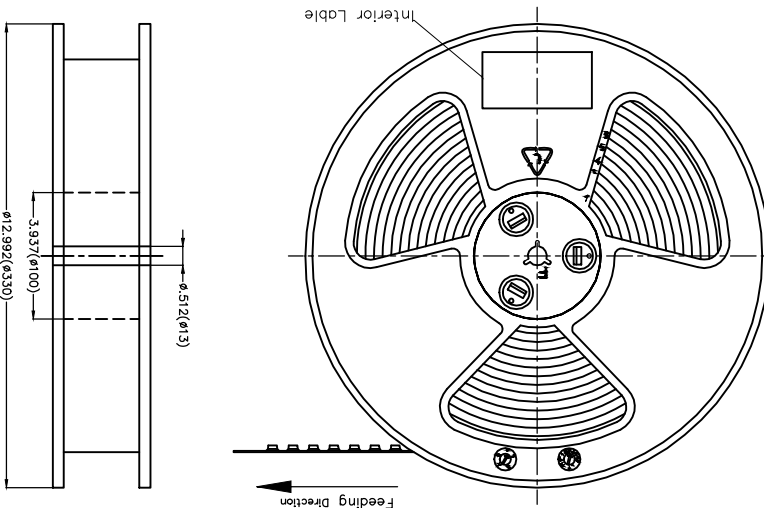
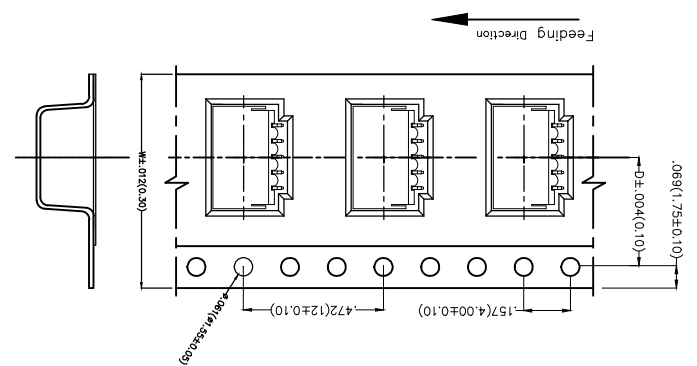
Circuits	Part No.	Dimensions(in/mm)							
		A	B	C					
2	FWF10001-S02B24W5M	.039(1.00)	.177(4.50)	.102(2.60)					
3	FWF10001-S03B24W5M	.078(2.00)	.217(5.50)	.142(3.60)					
4	FWF10001-S04B24W5M	.118(3.00)	.256(6.50)	.181(4.60)					
5	FWF10001-S05B24W5M	.157(4.00)	.295(7.50)	.220(5.60)					
6	FWF10001-S06B24W5M	.197(5.00)	.335(8.50)	.260(6.60)					
7	FWF10001-S07B24W5M	.236(6.00)	.374(9.50)	.299(7.60)					
8	FWF10001-S08B24W5M	.276(7.00)	.413(10.50)	.339(8.60)					
9	FWF10001-S09B24W5M	.315(8.00)	.453(11.50)	.378(9.60)					
10	FWF10001-S10B24W5M	.354(9.00)	.492(12.50)	.417(10.60)					
Circuits	Part No.	A	B	C	(n)	FWF10001-S11B24W5M	.394(10.00)	.531(13.50)	.457(11.60)
						FWF10001-S12B24W5M	.433(11.00)	.571(14.50)	.496(12.60)
						FWF10001-S13B24W5M	.472(12.00)	.610(15.50)	.535(13.60)
						FWF10001-S14B24W5M	.512(13.00)	.650(16.50)	.575(14.60)
						FWF10001-S15B24W5M	.551(14.00)	.689(17.50)	.614(15.60)
						FWF10001-S16B24W5M	.591(15.00)	.728(18.50)	.654(16.60)
						FWF10001-S17B24W5M	.630(16.00)	.768(19.50)	.693(17.60)
						FWF10001-S18B24W5M	.669(17.00)	.807(20.50)	.732(18.60)
						FWF10001-S20B24W5M	.748(19.00)	.886(22.50)	.811(20.60)

 THIRD ANGLE PROJECTION	GENERAL TOLERANCES (UNLESS SPECIFIED)	APPROVE BY FRANK	DATE 28/JUN/13	PART NO. FWF10001-SXXB24W5M	ITEM NO. FWF10001
	X.±.012(0.30)	CHECKED BY JACOB	DATE 28/JUN/13	TITLE Wire to Board (Water Pitch 1.0mm 90° Angle (SMT))	REV 0
X.XX±.008(0.20)	X.±.2	DRAWN BY JACOB	DATE 28/JUN/13	THIS DRAWING CONTAINS INFORMATION THAT IS PROPRIETARY TO TXGA INDUSTRIAL ELECTRONICS(SZ)CO.,LTD AND SHOULD NOT BE USED WITHOUT WRITTEN PERMISSION	SHEET NO. 2/3
X.XX±.006(0.15)	X.XX±.1	DRAWN BY CHERRY	DATE 28/JUN/13	SCALE 5:1	SIZE A4
X.XX±.004(0.10)	X.XX±.05	CHERRY	DATE 28/JUN/13	SCALE 5:1	SIZE A4

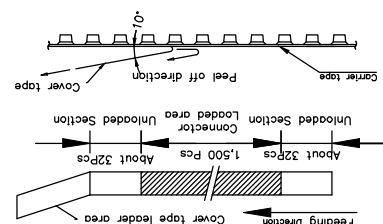
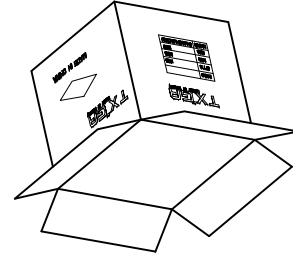
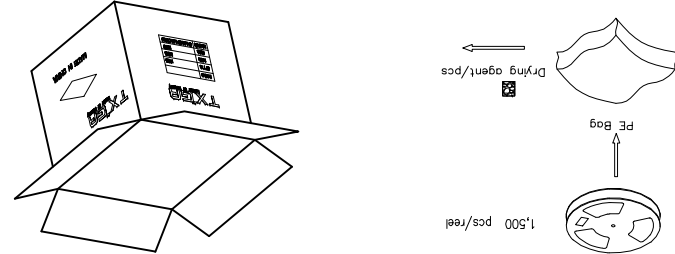


THIRD ANGLE	DESIGN UNITS	SCALE	SIZE
	Inch (metric)	5:1	A4
GENERAL TOLERANCES (UNLESS SPECIFIED)	CHECKED BY	DRAWN BY	DATE
X.±.012(0.30)	FRANK	JACOB	28/JUN/13
X.±.008(0.20)			
X.±.006(0.15)			
X.XXX±.004(0.10)			
X.XX±.05			

APPROVE BY	DATE	PART NO.	ITEM NO.
FRANK	28/JUN/13	FWF10001-SXXB24WSM	FWF10001
CHECKED BY	DATE	TITLE	
JACOB	28/JUN/13	Wire to Board (Water) Pitch 1.0mm 90° Angle (SMT)	
DRAWN BY	DATE	THIS DRAWING CONTAINS INFORMATION THAT IS PROPRIETARY TO TXGA INDUSTRIAL ELECTRONICS(SZ)CO.,LTD AND SHOULD NOT BE USED WITHOUT WRITTEN PERMISSION	
CHEERY	28/JUN/13		
		REV 0	SHEET NO. 3/3



Circuits (n)	Dimensions(in/mm)	
	D	W
2	.295(7.50)	.630(16.00)
3	.295(7.50)	.630(16.00)
4	.295(7.50)	.630(16.00)
5	.295(7.50)	.630(16.00)
6	.295(7.50)	.630(16.00)
7	.295(7.50)	.630(16.00)
8	.295(7.50)	.630(16.00)
9	.295(7.50)	.630(16.00)
10	.453(11.50)	.945(24.00)
11	.453(11.50)	.945(24.00)

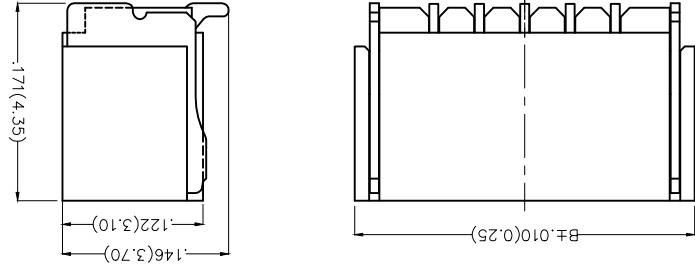
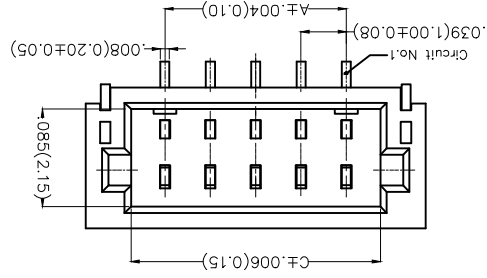


- Note:
- 10 sprocket hole cumulative tolerance±0.2
 - Carrier camber is within 1.0mm in 250mm
 - Material: White Conductive polystyrene Alloy 100% recyclable
 - All dimensions meet EIA-481-3 requirements
 - Peel off force of cover tape&carrier tape:20g~130g(0.2N~1.3N)
 - Component load per 13" reel: 1,500 pcs

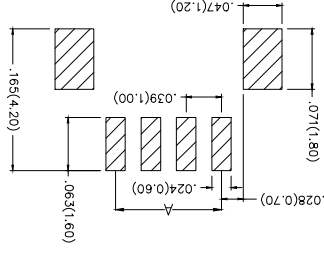
REV	LOCATIONS	DESCRIPTION	DATE	REVISER	APPD

REV	LOCATIONS	DESCRIPTION	DATE	REVISER	APPD

Electrical
 Current Rating: 1A AC(rms)/DC
 Voltage Rating: 50V AC(rms)/DC
 Contact Resistance: 20 mΩ Max
 Insulation Resistance: 100 MΩ MIN
 Withstanding Voltage: 500V AC r.m.s
 Temperature Range-Operating: -25°C~+85°C
 Material and Plating
 Housing: PA9T (UL 94V-0)
 Contact Pin: Brass/ Tin plated
 Solder Tab: Copper alloy/ Tin plated



Recommended P.C.Board Layout



Ordering Information

FWF 100 02 - S XX S 2 4 W5 M
 1 2 3 4 5 6 7 8 9 10

- 1 Category FWF-Wafer
- 2 Series Number 100-Pitch1.0mm
- 3 Distinction No. 02
- 4 Row Option Single Row
- 5 Circuits XX
- 6 Entry Angle S-180° Vertical
- 7 Plating 2-Tin Plated
- 8 Material-Resin 4-PA9T
- 9 Color-Resin W5-White
- 10 Packaging M-Reel

THIRD ANGLE PROJECTION	DESIGN UNITS Inch (metric)	SCALE 5:1 A4
------------------------	----------------------------	--------------

GENERAL TOLERANCES (UNLESS SPECIFIED)	X.±.5	X.±.2	X.±.1
APPROVE BY FRANK	DATE 28/JUN/13	CHECKED BY JACOB	DATE 28/JUN/13
DRAWN BY CHERRY	DATE 28/JUN/13	THIS DRAWING CONTAINS INFORMATION THAT IS PROPRIETARY TO TXGA INDUSTRIAL ELECTRONICS(SZ)CO.,LTD AND SHOULD NOT BE USED WITHOUT WRITTEN PERMISSION	

PART NO. FWF10002-SXXS24W5M	ITEM NO. FWF10002
TITLE Wire to Board (Wafer) Pitch 1.0mm 180° Vertical (SMT)	
REV 0	SHEET NO. 1/3



REV	LOCATIONS	DESCRIPTION	DATE	REVISER	APPD

Circuits	Part No.	Dimensions(in/mm)			Circuits	Part No.	Dimensions(in/mm)		
		A	B	C			A	B	C
2	FWF10002-S02S24W5M	.039(1.00)	.177(4.50)	.102(2.60)	11	FWF10002-S11S24W5M	.394(10.00)	.531(13.50)	.457(11.60)
3	FWF10002-S03S24W5M	.078(2.00)	.217(5.50)	.142(3.60)	12	FWF10002-S12S24W5M	.433(11.00)	.571(14.50)	.496(12.60)
4	FWF10002-S04S24W5M	.118(3.00)	.256(6.50)	.181(4.60)	13	FWF10002-S13S24W5M	.472(12.00)	.610(15.50)	.535(13.60)
5	FWF10002-S05S24W5M	.157(4.00)	.295(7.50)	.220(5.60)	14	FWF10002-S14S24W5M	.512(13.00)	.650(16.50)	.575(14.60)
6	FWF10002-S06S24W5M	.197(5.00)	.335(8.50)	.260(6.60)	15	FWF10002-S15S24W5M	.551(14.00)	.689(17.50)	.614(15.60)
7	FWF10002-S07S24W5M	.236(6.00)	.374(9.50)	.299(7.60)	16	FWF10002-S16S24W5M	.591(15.00)	.728(18.50)	.654(16.60)
8	FWF10002-S08S24W5M	.276(7.00)	.413(10.50)	.339(8.60)	17	FWF10002-S17S24W5M	.630(16.00)	.768(19.50)	.693(17.60)
9	FWF10002-S09S24W5M	.315(8.00)	.453(11.50)	.378(9.60)	18	FWF10002-S18S24W5M	.669(17.00)	.807(20.50)	.732(18.60)
10	FWF10002-S10S24W5M	.354(9.00)	.492(12.50)	.417(10.60)	20	FWF10002-S20S24W5M	.748(19.00)	.886(22.50)	.811(20.60)



GENERAL TOLERANCES
(UNLESS SPECIFIED)

APPROVE BY
FRANK

DATE
28/JUN/13

PART NO.

ITEM NO.
FWF10002

THIRD ANGLE
PROJECTION

CHECKED BY
X.±.5

DATE
28/JUN/13

DATE
28/JUN/13

TITLE
FWF10002-SXXS24W5M

Wire to Board (Water)
Pitch 1.0mm 180° Vertical (SMT)

DESIGN UNITS
Inch (metric)

SCALE
SIZE
A4
X.XX±.004(0.10)
.XXX±0.5

DRAWN BY
CHERRY

DATE
28/JUN/13

THIS DRAWING CONTAINS INFORMATION THAT IS PROPRIETARY TO TXGA INDUSTRIAL ELECTRONICS(SZ)CO.,LTD AND SHOULD NOT BE USED WITHOUT WRITTEN PERMISSION

REV 0
SHEET NO. 2/3



1 2 3 4 5 6 7 8

E

D

C

B

A

F

E

D

C

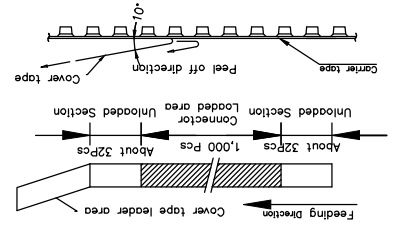
B

A

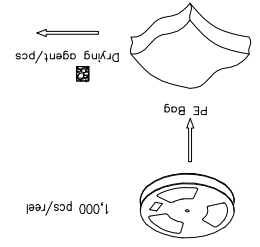
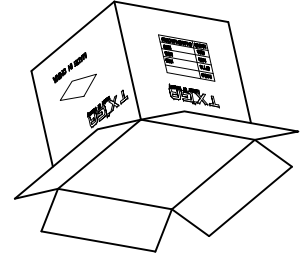
REV	LOCATIONS	DESCRIPTION	DATE	REWISER	APPD

Note:

- 10 sprocket hole cumulative tolerance±0.2
- Carrier camber is within 1.0mm in 250mm
- Material: White Conductive polystyrene Alloy 100% recyclable
- All dimensions meet EIA-481-3 requirements
- Peel off force of cover tape&carrier tape:20g~130g(0.2N~1.3N)
- Component load per 13" reel: 1,000 pcs

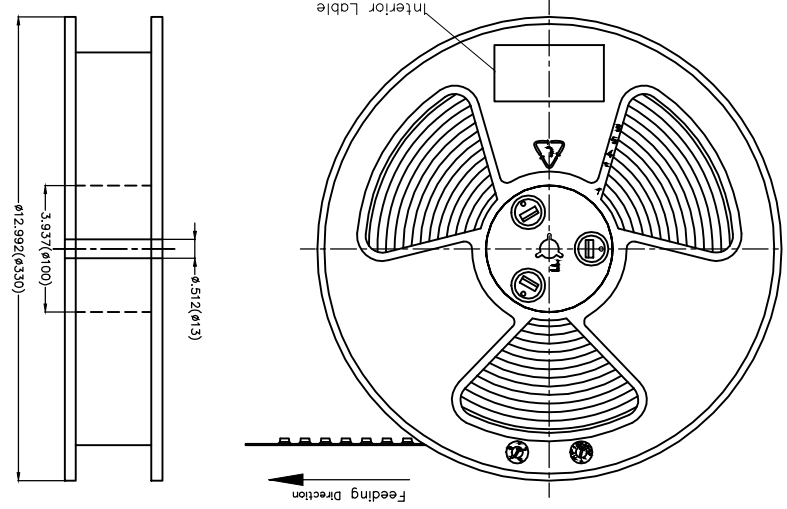
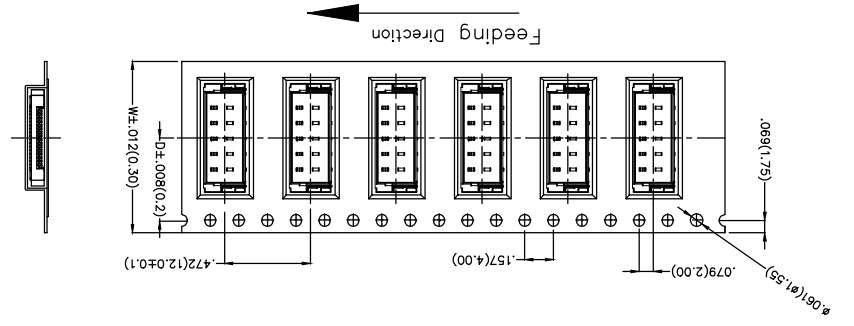


Circuits	Dimensions(in/mm)	
	D	W
(n)	D	W
2	.295(7.50)	.630(16.00)
3	.295(7.50)	.630(16.00)
4	.295(7.50)	.630(16.00)
5	.295(7.50)	.630(16.00)
6	.295(7.50)	.630(16.00)
7	.295(7.50)	.630(16.00)
8	.295(7.50)	.630(16.00)
9	.295(7.50)	.630(16.00)
10	.453(11.50)	.945(24.00)
11	.453(11.50)	.945(24.00)



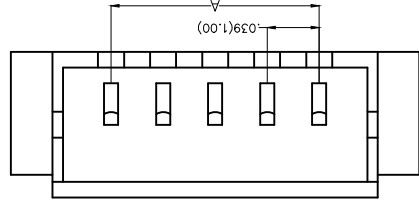
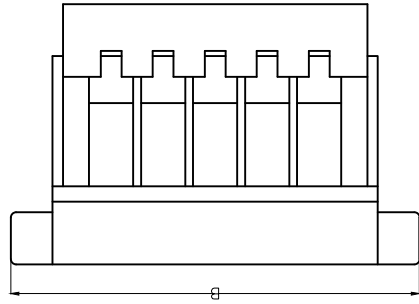
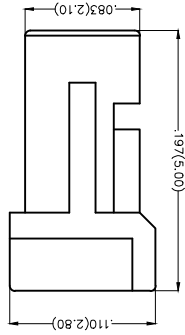
SCALE		DESIGN UNITS		THIRD ANGLE PROJECTION		GENERAL TOLERANCES (UNLESS SPECIFIED)		DATE		APPROVE BY		DATE		CHECKED BY		DATE		DRAWN BY		DATE	
5:1	A4	X.XX±.008(0.20)	X.XX±.006(0.15)	X.XX±.004(0.10)	X.XX±.002(0.05)	FRANK	JACOB	CHERRY	28/JUN/13	28/JUN/13	28/JUN/13	28/JUN/13	28/JUN/13	28/JUN/13	28/JUN/13	28/JUN/13	28/JUN/13	28/JUN/13	28/JUN/13	28/JUN/13	28/JUN/13

THIS DRAWING CONTAINS INFORMATION THAT IS PROPRIETARY TO TXGA INDUSTRIAL ELECTRONICS(SZ)CO.,LTD AND SHOULD NOT BE USED WITHOUT WRITTEN PERMISSION



REV	LOCATIONS	DESCRIPTION	DATE	REVISER	APPD

Electrical
 Temperature Range-Operating: -25°C~+85°C
 Material
 Housing: P466 (UL 94V-0)
 Applicable Terminal: FT10001
 Mates With: WF10001, WF10002 Series



Part No.	Dimensions(n/mm)	Part No.	Dimensions(n/mm)
FHG10001-S02MZW1B	.039(1.00)	FHG10001-S12MZW1B	.433(11.00)
FHG10001-S03MZW1B	.076(2.00)	FHG10001-S13MZW1B	.472(12.00)
FHG10001-S04MZW1B	.118(3.00)	FHG10001-S14MZW1B	.512(13.00)
FHG10001-S05MZW1B	.157(4.00)	FHG10001-S15MZW1B	.551(14.00)
FHG10001-S06MZW1B	.197(5.00)	FHG10001-S16MZW1B	.591(15.00)
FHG10001-S07MZW1B	.236(6.00)	FHG10001-S17MZW1B	.630(16.00)
FHG10001-S08MZW1B	.276(7.00)	FHG10001-S18MZW1B	.669(17.00)
FHG10001-S09MZW1B	.315(8.00)	FHG10001-S19MZW1B	.709(18.00)
FHG10001-S10MZW1B	.354(9.00)	FHG10001-S20MZW1B	.748(19.00)
FHG10001-S11MZW1B	.394(10.00)		
FHG10001-S12MZW1B	.433(11.00)		
FHG10001-S13MZW1B	.472(12.00)		
FHG10001-S14MZW1B	.512(13.00)		
FHG10001-S15MZW1B	.551(14.00)		
FHG10001-S16MZW1B	.591(15.00)		
FHG10001-S17MZW1B	.630(16.00)		
FHG10001-S18MZW1B	.669(17.00)		
FHG10001-S19MZW1B	.709(18.00)		
FHG10001-S20MZW1B	.748(19.00)		

Ordering Information

FHG 100 01 - S XX M 2 W1 B

1 Category
 2 Series Number
 3 Distinction No.
 4 Row Option
 5 Single Row

6 Circuits
 7 Entry Type
 8 Material-Resin
 9 Color-Resin
 10 W1-White
 11 B-PE Bag
 12 Packaging



GENERAL TOLERANCES
 (UNLESS SPECIFIED)

APPROVE BY
 FRANK

DATE
 25/JUN/13

PART NO.
 FHG10001-SXXMZW1B

ITEM NO.



WIRE TO BOARD
 PITCH 1.0mm(HOUSING)

REV 0
 SHEET NO. 1/1

DESIGN UNITS
 Inch (metric)

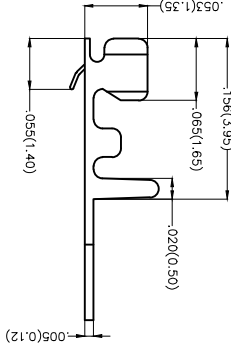
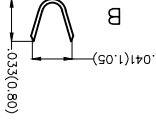
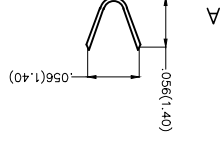
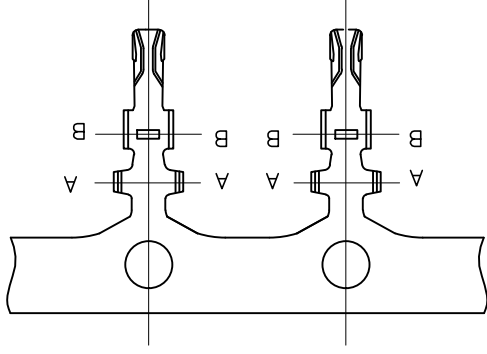
SCALE
 5:1
 A4

DRAWN BY
 JACOB

DATE
 25/JUN/13

THIS DRAWING CONTAINS INFORMATION THAT IS PROPRIETARY TO TXGA INDUSTRIAL ELECTRONICS(SZ)CO.,LTD AND SHOULD NOT BE USED WITHOUT WRITTEN PERMISSION

THIRD ANGLE 	PROJECTION	X.F.012(0.30)	X.F.5	FRANK	25/JUN/13	DATE	PART NO.	ITEM NO.	F110001	F110001-F2H	TITLE Wire to Board Pitch 1.0mm(Terminal)	REV 0	SHEET NO. 1/2
	DESIGN UNITS Inch (metric)	X.X±.008(0.20) .X±.2	JACOB	25/JUN/13	DATE	THIS DRAWING CONTAINS INFORMATION THAT IS PROPRIETARY TO TXGA INDUSTRIAL ELECTRONICS(SZ)CO.,LTD AND SHOULD NOT BE USED WITHOUT WRITTEN PERMISSION							
SCALE 5:1 A4	SIZE X.XX±.006(0.15) .XX±.1	CHERRY	25/JUN/13	DATE	ELECTRONICS(SZ)CO.,LTD AND SHOULD NOT BE USED WITHOUT WRITTEN PERMISSION								
GENERAL TOLERANCES (UNLESS SPECIFIED)		APPROVE BY	FRANK	25/JUN/13	DATE	PART NO.	ITEM NO.	F110001					



Electrical
Material: Phosphor Bronze C5191
All Corners and Radll Have a Maximum
Radius of 0.1mm unless Otherwise Specified
Plating: Tin-Plated
Wire Range: 32AWG~28AWG
Applicable Housing: FHG10001 Series
Minimum Order Quantity: 20,000 PCS

REV	LOCATIONS	DESCRIPTION	DATE	REVISER	APPD

A

B

C

D

E

F

8

7

6

5

4

3

2

1

A

B

C

D

E

F

REV	LOCATIONS	DESCRIPTION	DATE	REVISER	APPD

A

B

C

D

E

F



DATE	25/JUN/13	APPROVE BY	FRANK
DATE	25/JUN/13	CHECKED BY	X.±.5
DATE	25/JUN/13	DRAWN BY	JACOB
DATE	25/JUN/13	CHERRY	25/JUN/13

GENERAL TOLERANCES (UNLESS SPECIFIED)	X.±.012(0.30)
DESIGN UNITS Inch (metric)	X.±.008(0.20) X.±.1
SCALE	5:1 A4

THIS DRAWING CONTAINS INFORMATION THAT IS PROPRIETARY TO TXGA INDUSTRIAL ELECTRONICS(SZ)CO.,LTD AND SHOULD NOT BE USED WITHOUT WRITTEN PERMISSION	REV 0	SHEET NO. 2/2
WIRE TO BOARD Pitch 1.0mm(Terminal)	FT10001	FT10001-F2H
PART NO.	ITEM NO.	

8

7

6

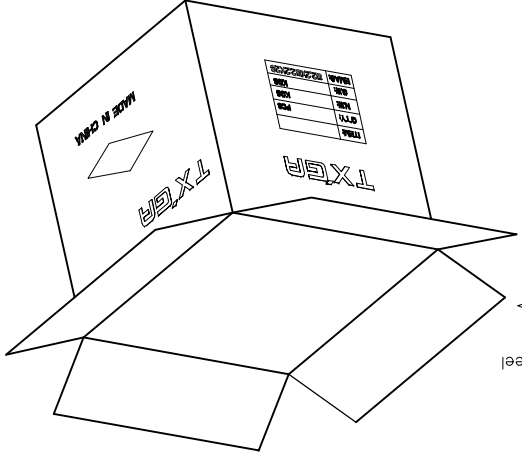
5

4

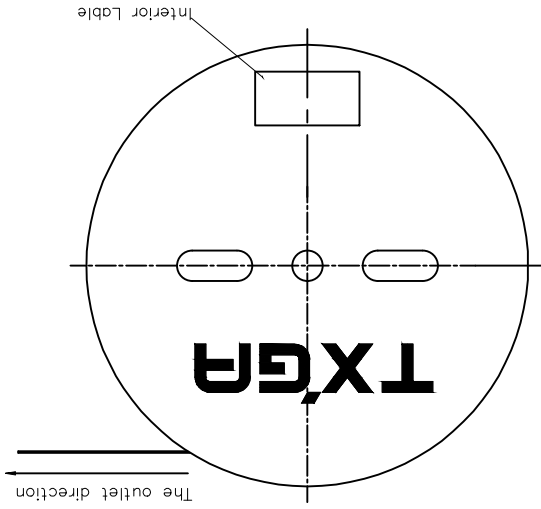
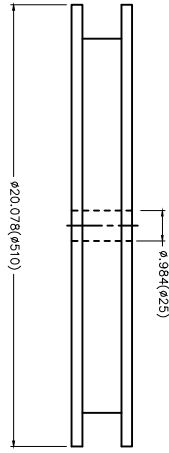
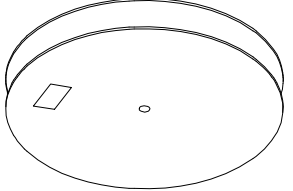
3

2

1



20,000Pcs/Reel



A

B

C

D

E

F

X-ON Electronics

Largest Supplier of Electrical and Electronic Components

Click to view similar products for [Headers & Wire Housings](#) category:

Click to view products by [TXGA](#) manufacturer:

Other Similar products are found below :

[95000-104TRLF](#) [10135584-644402LF](#) [DF62W-EP2022PCA](#) [95000-106TRLF](#) [DF62W-2022SCA](#) [DF62W-EP2022PC](#) [2203348](#) [DF62W-2022SC](#) [1084018](#) [1029039](#) [1084017](#) [802-10-012-10-002000](#) [1112640](#) [1112639](#) [891-007-9SS-BST1T](#) [000-34000](#) [0008550134](#) [0009482033](#) [0009507031](#) [57102-F02-18ULF](#) [57102-S06-03LF](#) [57202-S52-04LF](#) [PCN6-15S-2.5E](#) [0039019024](#) [58102-G61-06LF](#) [582553-1](#) [0009485154](#) [0009508121](#) [0022285053](#) [0050291907](#) [018731A](#) [LY20-4P-DT1-P1E-BR](#) [02.125.8002.8](#) [60101931](#) [60598-1 \(Cut Strip\)](#) [M1625-3R/100](#) [61062-3](#) [61082-181009](#) [CSU011177004](#) [636-1427](#) [638009-1](#) [641938-9](#) [641991-4](#) [644168-1](#) [644827-2](#) [647662-1](#) [65039-019ELF](#) [65692-001LF](#) [65781-018](#) [65781-047](#)