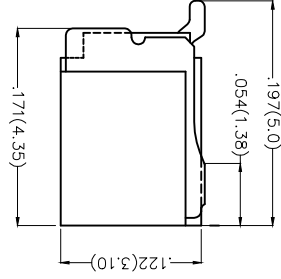
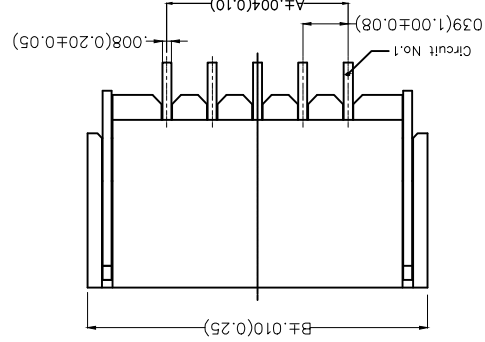
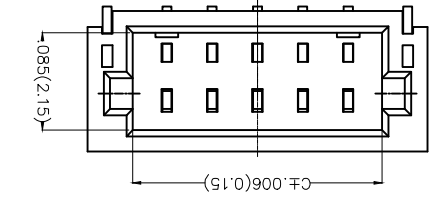
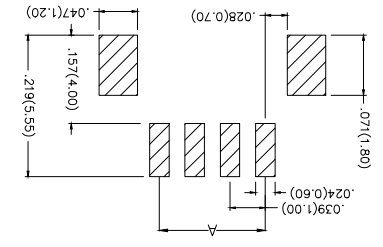


REV	LOCATIONS	DESCRIPTION	DATE	REVISER	APPD

Electrical
 Current Rating: 1A AC(rms)/DC
 Voltage Rating: 50V AC(rms)/DC
 Contact Resistance: 20 mΩ Max
 Insulation Resistance: 100 MΩ MIN
 Withstanding Voltage: 500V AC r.m.s
 Temperature Range—Operating: -25°C~+85°C
 Material and Plating
 Housing: PA9T (UL 94V-0)
 Contact Pin: Brass/ Tin plated
 Solder Tab: Copper alloy/ Tin plated



Recommended P.C.Board Layout



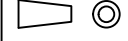
Ordering Information

1	Category	FWF-Water	2	Series Number	100-Pitch:1.0mm	3	Distinction No.	01	4	Row Option	Single Row	5	Circuits	XX	6	Entry Angle	B-90° Angle
7	Plating	2-Tin Plated	8	Material-Resin	4-PA9T	9	Color-Resin	W5-White	10	Packaging	M-Reel						

THIRD ANGLE PROJECTION	DESIGN UNITS	INCH (metric)	X.XX±.008(0.20)	X.XX±.006(0.15)	X.XX±.004(0.10)	X.XX±.05		
	SCALE	A4	5:1					
GENERAL TOLERANCES (UNLESS SPECIFIED)	APPROVE BY	DATE	PART NO.	ITEM NO.	TITLE	WIRE TO BOARD (Water) Pitch 1.0mm 90° Angle (SMT)	REV 0	SHEET NO. 1/3
FRANK	28/JUN/13	FWF10001-SXXB24WSM	FWF10001	Leader Of Industry	TXGA	THIS DRAWING CONTAINS INFORMATION THAT IS PROPRIETARY TO TXGA INDUSTRIAL ELECTRONICS(SZ)CO.,LTD AND SHOULD NOT BE USED WITHOUT WRITTEN PERMISSION		

REV	LOCATIONS	DESCRIPTION	DATE	REVISER	APPD

Circuits	Part No.	Dimensions(in/mm)							
		A	B	C					
2	FWF10001-S02B24W5M	.039(1.00)	.177(4.50)	.102(2.60)					
3	FWF10001-S03B24W5M	.078(2.00)	.217(5.50)	.142(3.60)					
4	FWF10001-S04B24W5M	.118(3.00)	.256(6.50)	.181(4.60)					
5	FWF10001-S05B24W5M	.157(4.00)	.295(7.50)	.220(5.60)					
6	FWF10001-S06B24W5M	.197(5.00)	.335(8.50)	.260(6.60)					
7	FWF10001-S07B24W5M	.236(6.00)	.374(9.50)	.299(7.60)					
8	FWF10001-S08B24W5M	.276(7.00)	.413(10.50)	.339(8.60)					
9	FWF10001-S09B24W5M	.315(8.00)	.453(11.50)	.378(9.60)					
10	FWF10001-S10B24W5M	.354(9.00)	.492(12.50)	.417(10.60)					
Circuits	Part No.	A	B	C	(n)	FWF10001-S11B24W5M	.394(10.00)	.531(13.50)	.457(11.60)
						FWF10001-S12B24W5M	.433(11.00)	.571(14.50)	.496(12.60)
						FWF10001-S13B24W5M	.472(12.00)	.610(15.50)	.535(13.60)
						FWF10001-S14B24W5M	.512(13.00)	.650(16.50)	.575(14.60)
						FWF10001-S15B24W5M	.551(14.00)	.689(17.50)	.614(15.60)
						FWF10001-S16B24W5M	.591(15.00)	.728(18.50)	.654(16.60)
						FWF10001-S17B24W5M	.630(16.00)	.768(19.50)	.693(17.60)
						FWF10001-S18B24W5M	.669(17.00)	.807(20.50)	.732(18.60)
						FWF10001-S20B24W5M	.748(19.00)	.886(22.50)	.811(20.60)



GENERAL TOLERANCES
(UNLESS SPECIFIED)

APPROVE BY
FRANK

DATE
28/JUN/13

PART NO.
FWF10001-SXXB24W5M

ITEM NO.
FWF10001

THIRD ANGLE
PROJECTION

CHECKED BY
X.±5

DATE
28/JUN/13

TITLE
FWF10001-SXXB24W5M

DESIGN UNITS
Inch (metric)

DRAWN BY
JACOB

DATE
28/JUN/13

Wire to Board (Water)
Pitch 1.0mm 90° Angle (SMT)

SCALE
5:1

SIZE
A4

CHERRY

THIS DRAWING CONTAINS INFORMATION THAT IS PROPRIETARY TO TXGA INDUSTRIAL ELECTRONICS(SZ)CO.,LTD AND SHOULD NOT BE USED WITHOUT WRITTEN PERMISSION

Leader Of Industry
TXGA

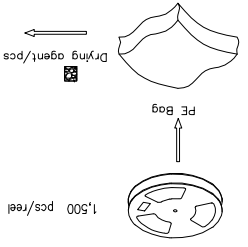
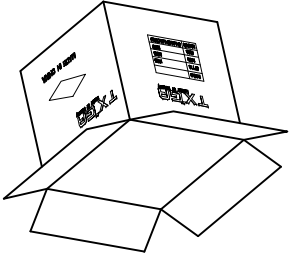
REV 0

SHEET NO. 2/3

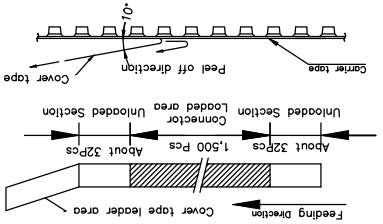
THIRD ANGLE	PROJECTION	X.±.012(0.30)	X.±.008(0.20)	X.±.006(0.15)	X.XXX±.004(0.10)
DESIGN UNITS	Inch (metric)	X.±.2	X.±.2	X.±.1	X.±.1
SCALE	SIZE	A4	5:1		

GENERAL TOLERANCES (UNLESS SPECIFIED)	DATE	APPROVE BY	DATE	CHECKED BY	DATE	DRAWN BY	DATE
	28/JUN/13	FRANK	28/JUN/13	JACOB	28/JUN/13	CHEERY	28/JUN/13

ITEM NO.	FWF10001	FWF10001-SXXB24WSM	FWF10001	TXGA
PART NO.				
TITLE				
Wire to Board (Wtbr) Pitch 1.0mm 90° Angle (SMT)				
REV 0	SHEET NO. 3/3	THIS DRAWING CONTAINS INFORMATION THAT IS PROPRIETARY TO TXGA INDUSTRIAL ELECTRONICS(SZ)CO.,LTD AND SHOULD NOT BE USED WITHOUT WRITTEN PERMISSION		

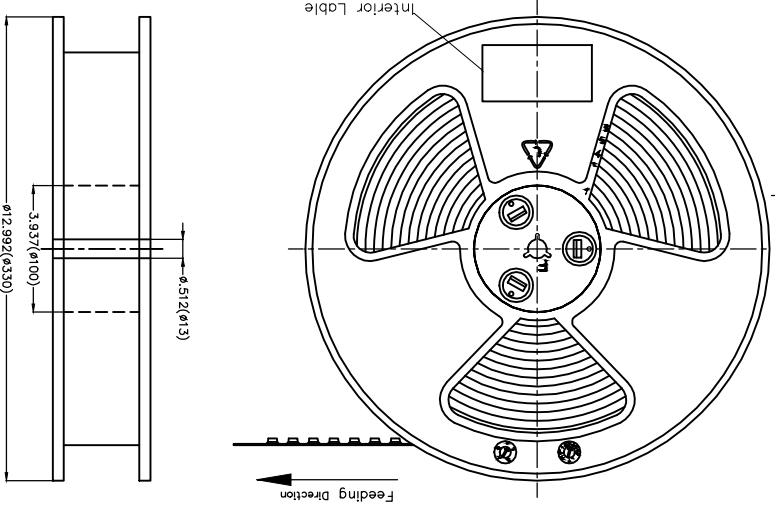
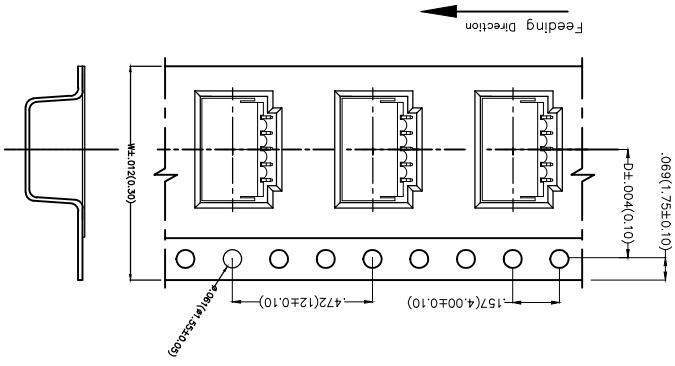


Circuits	Dimensions(in/mm)	W	D	(n)
2	.295(7.50)	.630(16.00)	.453(11.50)	.945(24.00)
3	.295(7.50)	.630(16.00)	.453(11.50)	.945(24.00)
4	.295(7.50)	.630(16.00)	.453(11.50)	.945(24.00)
5	.295(7.50)	.630(16.00)	.453(11.50)	.945(24.00)
6	.295(7.50)	.630(16.00)	.453(11.50)	.945(24.00)
7	.295(7.50)	.630(16.00)	.453(11.50)	.945(24.00)
8	.295(7.50)	.630(16.00)	.453(11.50)	.945(24.00)
9	.295(7.50)	.630(16.00)	.453(11.50)	.945(24.00)
10	.453(11.50)	.945(24.00)	.630(16.00)	.798(20.20)
11	.453(11.50)	.945(24.00)	.630(16.00)	.798(20.20)



- Note:
- 10 sprocket hole cumulative tolerance±0.2
 - Carrier camber is within 1.0mm in 250mm
 - Material: White Conductive polystyrene Alloy 100% recyclable
 - All dimensions meet EIA-481-3 requirements
 - Peel off force of cover tape&carrier tape:20g~130g(0.2N~1.3N)
 - Component load per 13" reel: 1,500 pcs

REV	LOCATIONS	DESCRIPTION	DATE	REVISER	APPD



A B C D E F

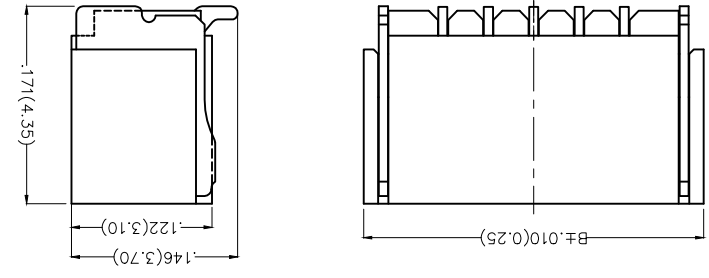
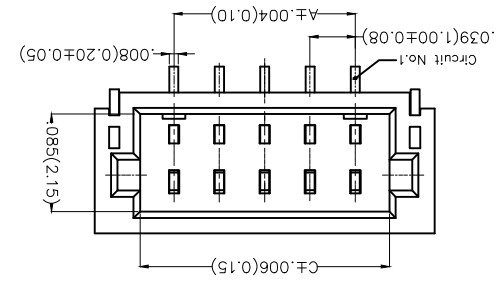
A B C D E F

1 2 3 4 5 6 7 8

1 2 3 4 5 6 7 8

REV	LOCATIONS	DESCRIPTION	DATE	REVISER	APPD

Electrical
 Current Rating: 1A AC(rms)/DC
 Voltage Rating: 50V AC(rms)/DC
 Contact Resistance: 20 mΩ Max
 Insulation Resistance: 100 MΩ MIN
 Withstanding Voltage: 500V AC r.m.s
 Temperature Range-Operating: -25°C~+85°C
 Material and Plating
 Housing: PA9T (UL 94V-0)
 Contact Pin: Brass/ Tin plated
 Solder Tab: Copper alloy/ Tin plated



Ordering Information

FWF 100 02 - S XX S 2 / 4 W5 M

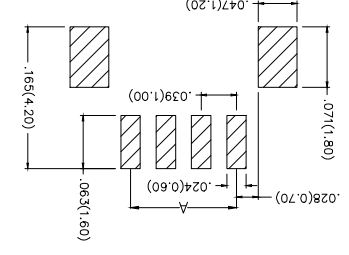
1	Category	FWF-Wafer
2	Series Number	100-Pitch1.0mm
3	Distinction No.	02
4	Row Option	Single Row
5	Circuits	XX
6	Entry Angle	S-180° Vertical
7	Plating	2-Tin Plated
8	Material-Resin	4-PA9T
9	Color-Resin	W5-White
10	Packaging	M-Reel

GENERAL TOLERANCES (UNLESS SPECIFIED)	APPROVE BY	DATE	PART NO.	ITEM NO.
X.±.012(0.30)	FRANK	28/JUN/13	FWF10002-SXXS24W5M	FWF10002
X.±.2	CHECKED BY	DATE	TITLE	
X.XX±.006(0.15)	JACOB	28/JUN/13	Wire to Board (Wafer)	
X.XX±.004(0.10)	DRAWN BY	DATE	Pitch 1.0mm 180° Vertical (SMT)	
X.XX±.004(0.10)	CHEERY	28/JUN/13	THIS DRAWING CONTAINS INFORMATION THAT IS PROPRIETARY TO TXGA INDUSTRIAL ELECTRONICS(SZ)CO.,LTD AND SHOULD NOT BE USED WITHOUT WRITTEN PERMISSION	

SCALE	5:1
SIZE	A4
DESIGN UNITS	Inch (metric)
THIRD ANGLE PROJECTION	



Recommended P.C.Board Layout



REV	LOCATIONS	DESCRIPTION	DATE	REVISER	APPD

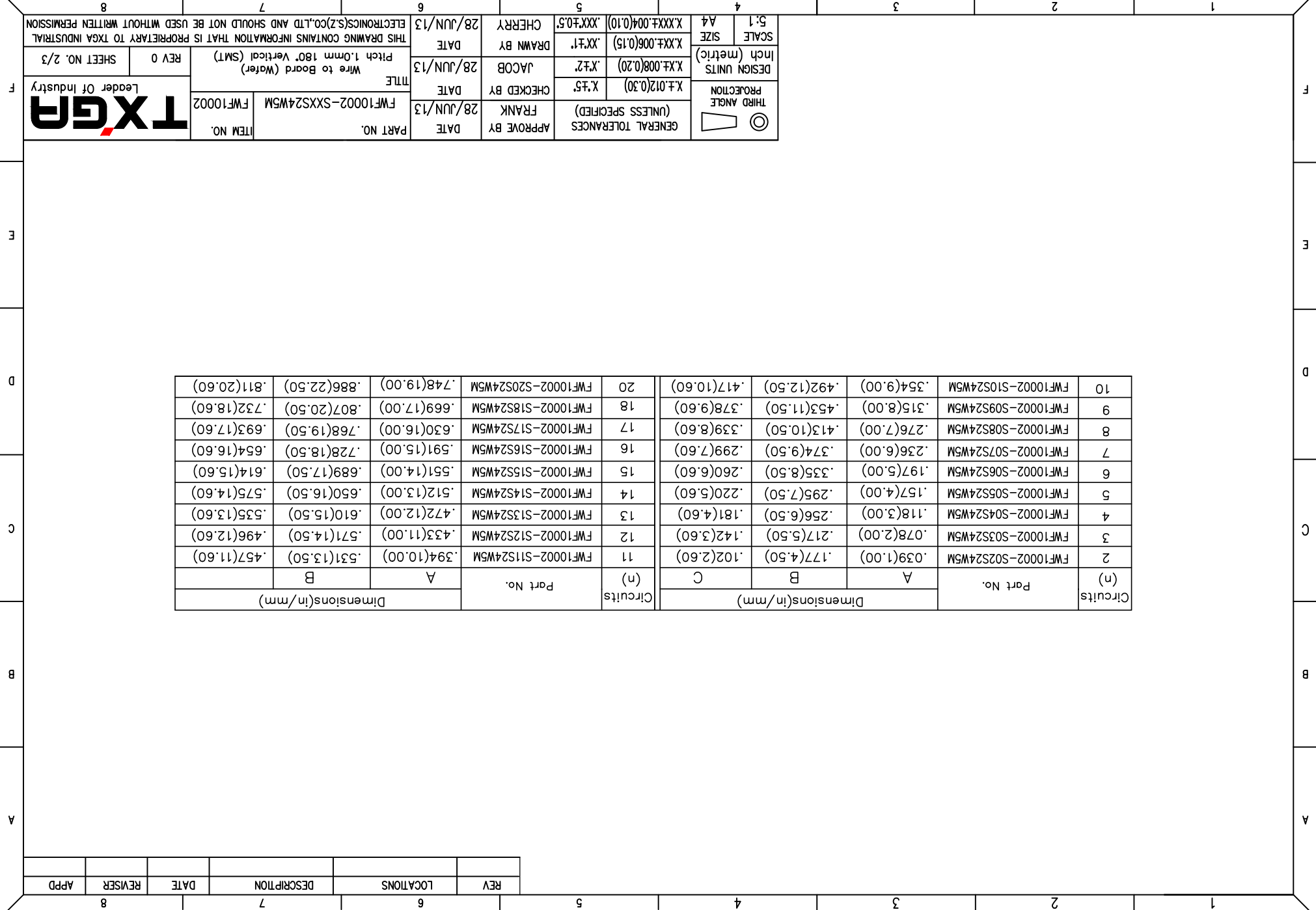
Circuits (n)	Part No.	Dimensions(in/mm)		
		A	B	C
2	FWF10002-S02S24W5M	.039(1.00)	.177(4.50)	.102(2.60)
3	FWF10002-S03S24W5M	.078(2.00)	.217(5.50)	.142(3.60)
4	FWF10002-S04S24W5M	.118(3.00)	.256(6.50)	.181(4.60)
5	FWF10002-S05S24W5M	.157(4.00)	.295(7.50)	.220(5.60)
6	FWF10002-S06S24W5M	.197(5.00)	.335(8.50)	.260(6.60)
7	FWF10002-S07S24W5M	.236(6.00)	.374(9.50)	.299(7.60)
8	FWF10002-S08S24W5M	.276(7.00)	.413(10.50)	.339(8.60)
9	FWF10002-S09S24W5M	.315(8.00)	.453(11.50)	.378(9.60)
10	FWF10002-S10S24W5M	.354(9.00)	.492(12.50)	.417(10.60)
Circuits (n)	Part No.	Dimensions(in/mm)		
		A	B	C
11	FWF10002-S11S24W5M	.394(10.00)	.531(13.50)	.457(11.60)
12	FWF10002-S12S24W5M	.433(11.00)	.571(14.50)	.496(12.60)
13	FWF10002-S13S24W5M	.472(12.00)	.610(15.50)	.535(13.60)
14	FWF10002-S14S24W5M	.512(13.00)	.650(16.50)	.575(14.60)
15	FWF10002-S15S24W5M	.551(14.00)	.689(17.50)	.614(15.60)
16	FWF10002-S16S24W5M	.591(15.00)	.728(18.50)	.654(16.60)
17	FWF10002-S17S24W5M	.630(16.00)	.768(19.50)	.693(17.60)
18	FWF10002-S18S24W5M	.669(17.00)	.807(20.50)	.732(18.60)
20	FWF10002-S20S24W5M	.748(19.00)	.886(22.50)	.811(20.60)

THIRD ANGLE PROJECTION	
DESIGN UNITS	X.XX±.008(0.20)
Inch (metric)	X.XX±.006(0.15)
SCALE	5:1 A4

GENERAL TOLERANCES (UNLESS SPECIFIED)	X.±.012(0.30)
APPROVE BY	FRANK
DATE	28/JUN/13
PART NO.	FWF10002-SXXS24W5M
ITEM NO.	FWF10002

CHECKED BY	JACOB
DATE	28/JUN/13
WIRE TO BOARD (Water)	Pitch 1.0mm 180° Vertical (SMT)
REV 0	SHEET NO. 2/3

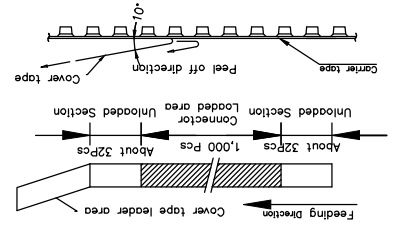
DRAWN BY	CHERRY
DATE	28/JUN/13
THIS DRAWING CONTAINS INFORMATION THAT IS PROPRIETARY TO TXGA INDUSTRIAL ELECTRONICS(SZ)CO.,LTD AND SHOULD NOT BE USED WITHOUT WRITTEN PERMISSION	



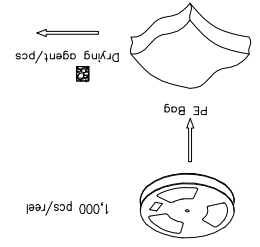
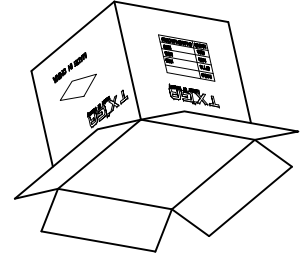
REV	LOCATIONS	DESCRIPTION	DATE	REVISER	APPD

Note:

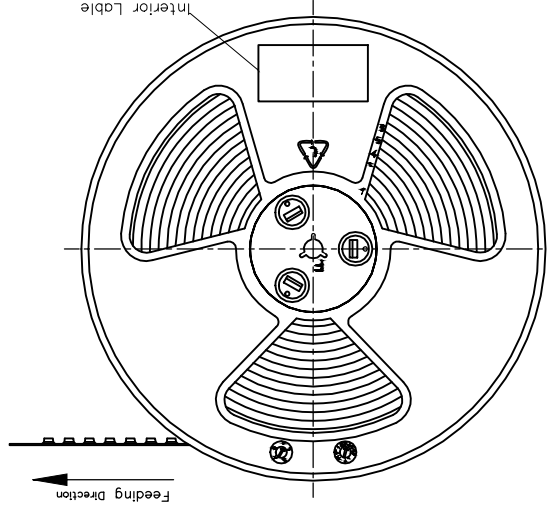
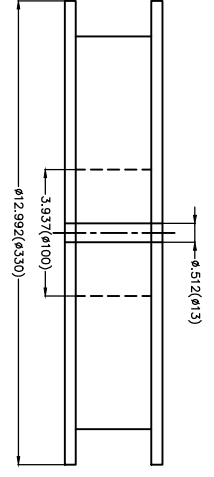
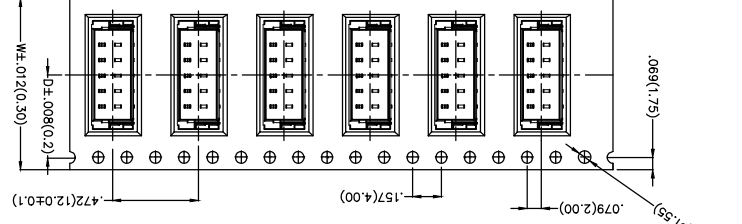
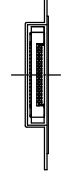
- 10 sprocket hole cumulative tolerance±0.2
- Carrier camber is within 1.0mm in 250mm
- Material: White Conductive polystyrene Alloy 100% recyclable
- All dimensions meet EIA-481-3 requirements
- Peel off force of cover tape&carrier tape:20g~130g(0.2N~1.3N)
- Component load per 13" reel: 1,000 pcs



Circuits	Dimensions(in/mm)	
	D	W
(n)	D	W
2	.295(7.50)	.630(16.00)
3	.295(7.50)	.630(16.00)
4	.295(7.50)	.630(16.00)
5	.295(7.50)	.630(16.00)
6	.295(7.50)	.630(16.00)
7	.295(7.50)	.630(16.00)
8	.295(7.50)	.630(16.00)
9	.295(7.50)	.630(16.00)
10	.453(11.50)	.945(24.00)
11	.453(11.50)	.945(24.00)



SCALE	5:1	DRAWN BY	CHERRY	DATE	28/JUN/13	GENERAL TOLERANCES (UNLESS SPECIFIED)	FRANK	CHECKED BY	JACOB	DATE	28/JUN/13	PART NO.	FWF10002-SXXS24WSM	ITEM NO.	FWF10002	TITLE	Wire to Board (Water)	Pitch 1.0mm 180° Vertical (SMT)	REV 0	SHEET NO. 3/3	
	A4		JACOB		FRANK		JACOB		DATE		28/JUN/13		FWF10002		Leader Of Industry						
DESIGN UNITS	Inch (metric)	X.XX±.006(0.15)	X.XX±.006(0.15)	X.XX±.004(0.10)	X.XX±.004(0.10)	X.XX±.012(0.30)	X.XX±.008(0.20)	X.XX±.008(0.20)	X.XX±.006(0.15)	X.XX±.004(0.10)	X.XX±.004(0.10)	APPROVE BY	DATE	28/JUN/13	DATE	28/JUN/13	THIS DRAWING CONTAINS INFORMATION THAT IS PROPRIETARY TO TXGA INDUSTRIAL ELECTRONICS(SZ)CO.,LTD AND SHOULD NOT BE USED WITHOUT WRITTEN PERMISSION				
THIRD ANGLE PROJECTION																					



F

E

D

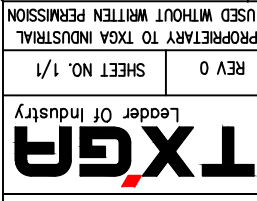
C

B

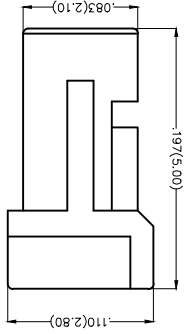
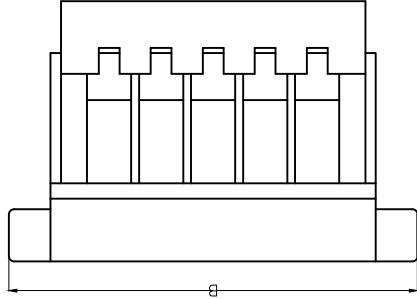
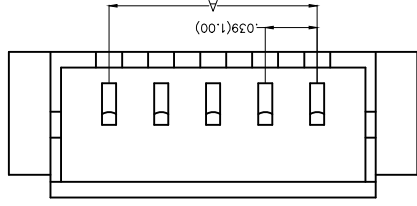
A

THIRD ANGLE PROJECTION 	DESIGN UNITS	X.±.008(0.20)	X.±.7	JACOB	25/JUN/13	DATE	WIRE TO BOARD PITCH 1.0mm(HOUSING)	REV 0	SHEET NO. 1/1
	SCALE	A4	X.XXX±.004(0.10)	XXX±.05	CHERRY	25/JUN/13	DATE	THIS DRAWING CONTAINS INFORMATION THAT IS PROPRIETARY TO TXGA INDUSTRIAL ELECTRONICS(SZ)CO.,LTD AND SHOULD NOT BE USED WITHOUT WRITTEN PERMISSION	

GENERAL TOLERANCES (UNLESS SPECIFIED)	APPROVE BY	FRANK	25/JUN/13	DATE	PART NO.	FHG10001-SXXM2WB	ITEM NO.	FHG10001
	CHECKED BY	JACOB	25/JUN/13	DATE	TITLE	Wire to Board		
	DRAWN BY	JACOB	25/JUN/13	DATE	Leader Of Industry			



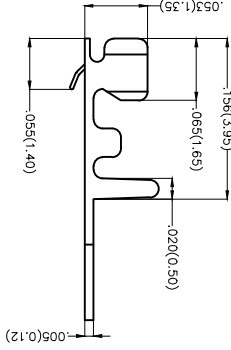
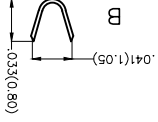
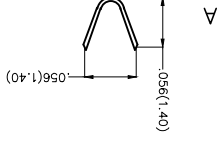
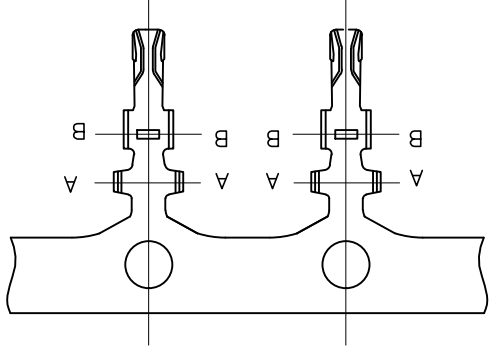
- Ordering Information
- FHG 100 01 - S XX M 2 W1 B
- 1 Category
 - 2 Series Number
 - 3 Distinction No.
 - 4 Row Option
 - 5 Circuits
 - 6 Entry Type
 - 7 Material-Resin
 - 8 Color-Resin
 - 9 Packaging



Circuits	Part No.	Dimensions(n/mm)	
		A	B
(n)	FHG10001-S02M2WB	.039(1.00)	.197(5.00)
2	FHG10001-S03M2WB	.078(2.00)	.236(6.00)
3	FHG10001-S04M2WB	.118(3.00)	.276(7.00)
4	FHG10001-S05M2WB	.157(4.00)	.315(8.00)
5	FHG10001-S06M2WB	.197(5.00)	.354(9.00)
6	FHG10001-S07M2WB	.236(6.00)	.394(10.00)
7	FHG10001-S08M2WB	.276(7.00)	.433(11.00)
8	FHG10001-S09M2WB	.315(8.00)	.472(12.00)
9	FHG10001-S10M2WB	.354(9.00)	.512(13.00)
10	FHG10001-S11M2WB	.394(10.00)	.551(14.00)
11	FHG10001-S12M2WB	.433(11.00)	.591(15.00)
		.472(12.00)	.630(16.00)
		.512(13.00)	.669(17.00)
		.551(14.00)	.709(18.00)
		.591(15.00)	.748(19.00)
		.630(16.00)	.787(20.00)
		.669(17.00)	.827(21.00)
		.709(18.00)	.866(22.00)
		.748(19.00)	.906(23.00)

Electrical
 Temperature Range-Operating: -25°C~+85°C
 Material
 Housing:PA66(UL 94V-0)
 Applicable Terminal: FT10001
 Mates With: WF10001,WF10002 Series

REV	LOCATIONS	DESCRIPTION	DATE	REVISER	APPD



Electrical
 Material: Phosphor Bronze C5191
 All Corners and Radial Have a Maximum
 Radius of 0.1mm unless Otherwise Specified
 Plating: Tin-Plated
 Wire Range: 32AWG~28AWG
 Applicable Housing: FHG10001 Series
 Minimum Order Quantity: 20,000 PCS

REV	LOCATIONS	DESCRIPTION	DATE	REVISER	APPD

THIRD ANGLE		DESIGN UNITS		SCALE		GENERAL TOLERANCES		APPROVE BY		DATE		PART NO.		ITEM NO.	
		X.F. 012(0.30)	X.F. 2"	X.XX±.006(0.15)	X.XX±.05"	X.XX±.004(0.10)	X.XX±.1"	FRANK	25/JUN/13	FT10001-F2H	FT10001	THIS DRAWING CONTAINS INFORMATION THAT IS PROPRIETARY TO TXGA INDUSTRIAL ELECTRONICS(SZ)CO.,LTD AND SHOULD NOT BE USED WITHOUT WRITTEN PERMISSION			
		X.F. 008(0.20)	X.F. 1"	X.XX±.006(0.15)	X.XX±.05"	X.XX±.004(0.10)	X.XX±.1"	JACOB	25/JUN/13	Wire to Board Pitch 1.0mm(Terminal)	REV 0	Leader Of Industry			
		X.F. 008(0.20)	X.F. 1"	X.XX±.006(0.15)	X.XX±.05"	X.XX±.004(0.10)	X.XX±.1"	CHECKED BY	25/JUN/13			SHEET NO. 1/2			
		X.F. 008(0.20)	X.F. 1"	X.XX±.006(0.15)	X.XX±.05"	X.XX±.004(0.10)	X.XX±.1"	DRAWN BY	25/JUN/13						
		X.F. 008(0.20)	X.F. 1"	X.XX±.006(0.15)	X.XX±.05"	X.XX±.004(0.10)	X.XX±.1"	DATE	25/JUN/13						
		X.F. 008(0.20)	X.F. 1"	X.XX±.006(0.15)	X.XX±.05"	X.XX±.004(0.10)	X.XX±.1"								

TXGA
 Leader Of Industry

REV	LOCATIONS	DESCRIPTION	DATE	REVISER	APPD

A

B

C

D

E

F



DATE	25/JUN/13	APPROVE BY	FRANK
DATE	25/JUN/13	CHECKED BY	X.±.5
DATE	25/JUN/13	DRAWN BY	JACOB
DATE	25/JUN/13	CHERRY	25/JUN/13

GENERAL TOLERANCES (UNLESS SPECIFIED)	X.±.012(0.30)
DESIGN UNITS Inch (metric)	X.XX±.008(0.20) X.XX±.006(0.15)
SCALE	5:1 A4

THIS DRAWING CONTAINS INFORMATION THAT IS PROPRIETARY TO TXGA INDUSTRIAL ELECTRONICS(SZ)CO.,LTD AND SHOULD NOT BE USED WITHOUT WRITTEN PERMISSION

REV 0 SHEET NO. 2/2

Wire to Board
Pitch 1.0mm(Terminal)

ITEM NO. FT10001

TITLE FT10001-F2H

8

7

6

5

4

3

2

1

1

F

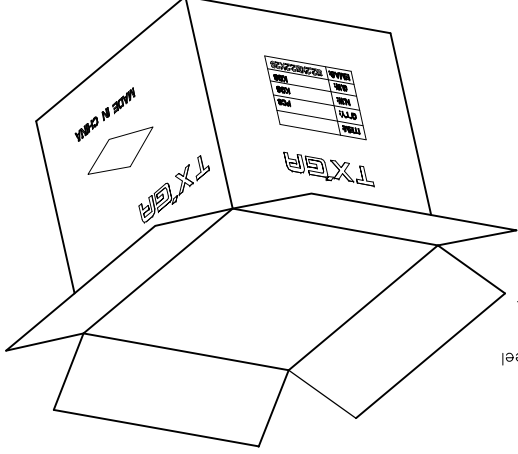
E

D

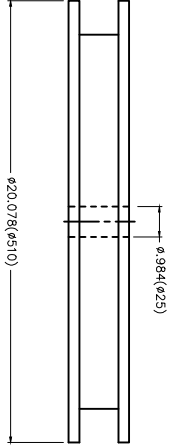
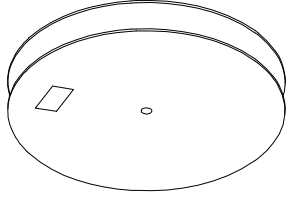
C

B

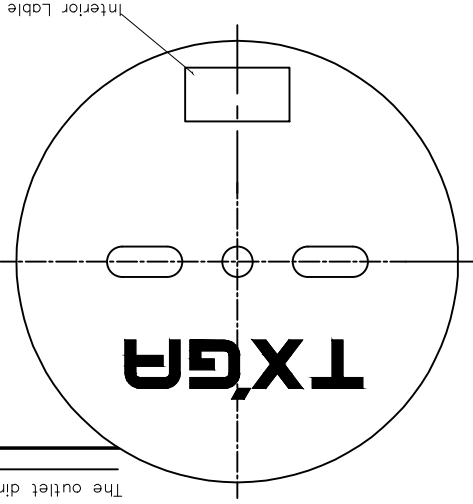
A



20,000Pcs/Reel



The outlet direction



X-ON Electronics

Largest Supplier of Electrical and Electronic Components

Click to view similar products for [Headers & Wire Housings](#) category:

Click to view products by [TXGA](#) manufacturer:

Other Similar products are found below :

[95000-104TRLF](#) [10135584-644402LF](#) [DF62W-EP2022PCA](#) [95000-106TRLF](#) [DF62W-2022SCA](#) [DF62W-EP2022PC](#) [2203348](#) [DF62W-2022SC](#) [1084018](#) [1029039](#) [1084017](#) [802-10-012-10-002000](#) [1112640](#) [1112639](#) [891-007-9SS-BST1T](#) [000-34000](#) [0008550134](#) [0009482033](#) [0009507031](#) [57102-F02-18ULF](#) [57102-S06-03LF](#) [57202-S52-04LF](#) [PCN6-15S-2.5E](#) [0039019024](#) [58102-G61-06LF](#) [582553-1](#) [0009485154](#) [0009508121](#) [0022285053](#) [0050291907](#) [018731A](#) [LY20-4P-DT1-P1E-BR](#) [02.125.8002.8](#) [60101931](#) [60598-1 \(Cut Strip\)](#) [M1625-3R/100](#) [61062-3](#) [61082-181009](#) [CSU011177004](#) [636-1427](#) [638009-1](#) [641938-9](#) [641991-4](#) [644168-1](#) [644827-2](#) [647662-1](#) [65039-019ELF](#) [65692-001LF](#) [65781-018](#) [65781-047](#)